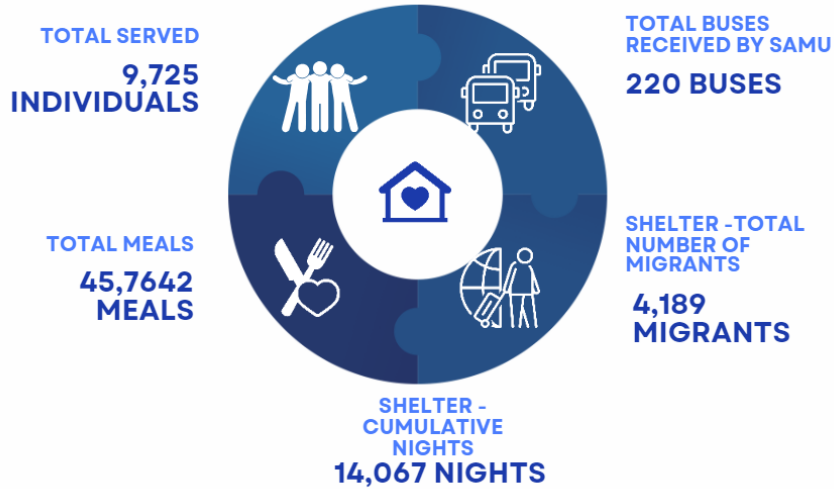
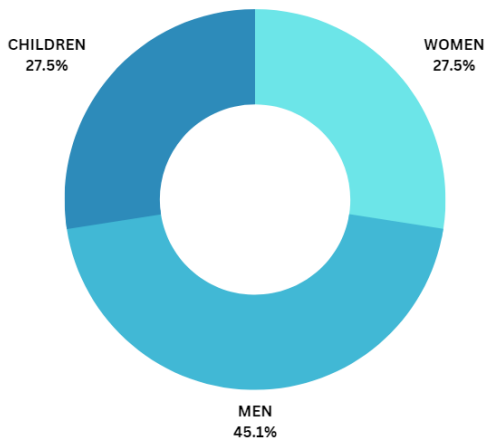


## Cumulative Data: 6/21/2022- 7/20/2023

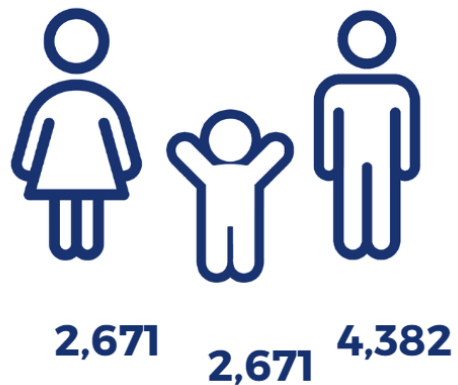
### CUMULATIVE TOTAL



### Migrants Arrivals by Gender



### Population Classification:



Delving into the demographics served by SAMU First Response reveals a wide-ranging mix. Women, who represent **27.5%** of SAMU's service population, receive essential support and

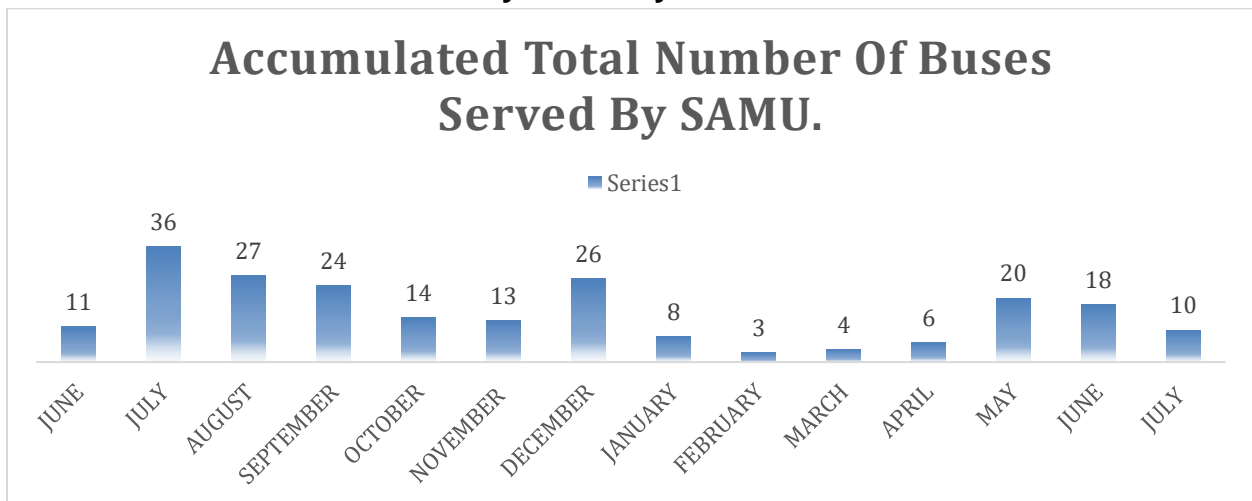
resources that can help them navigate the challenges of migration. These services empower them in their journey and foster resilience in their new environments.

Men form a notable segment, making up **45.1%** of the population served. SAMU's focus on this demographic signifies its inclusive and comprehensive approach, attending to the needs of both single travelers and family providers, as they begin their new lives.

Notably, children constitute **27.5%** of those served by SAMU. The support offered to these young migrants, from providing basic necessities to educational assistance, is a crucial investment in their safer journey and brighter future.

In essence, this distribution reflects SAMU's broad and inclusive reach, demonstrating the organization's commitment to serving a diverse population with unique needs as they embark on their journey toward a new life.

### Total Number of Buses Served by SAMU By Month



In the month of July, SAMU First Response experienced a substantial influx of migrants arriving by bus from the Arizona and Texas borders. This arrival pattern mirrored the trend observed in the previous month, confirming a sustained demand for the organization's services. In total, the organization welcomed **10** buses in June, a figure slightly less than the 8 buses received in May, but still indicative of the consistent and high-volume migrant flow.

## Countries of Origin



**54 Countries of Origin:** The global reach and impact of SAMU First Response's work is truly remarkable, as evidenced by the diverse origins of the individuals they serve. This international scope provides a testament to the organization's broad appeal and its mission's universal relevance. SAMU has been able to touch lives across the world, offering support to individuals from a multitude of cultures, backgrounds, and experiences.

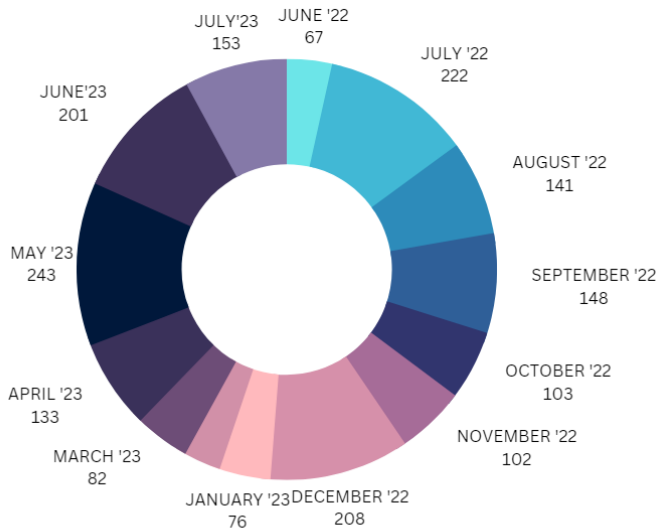
The majority of the migrants who reached out to SAMU in the month of June came from Venezuela. This South American nation contributed to a significant **43.8%** of the migrant population served by SAMU. The large proportion of Venezuelans seeking support is likely reflective of the ongoing social, political, and economic challenges in the country, reinforcing the critical role SAMU plays in offering a helping hand to those most affected by these circumstances.

Notably, SAMU's reach extends beyond the Americas. About **1.7%** of the migrants served were from Mauritania, highlighting the organization's impact on the African continent. Despite being thousands of miles away, these individuals have found solace and support in the services provided by SAMU, a testament to the organization's commitment to aiding individuals irrespective of geographical boundaries.

Furthermore, **14.4%** of the migrants served by SAMU originated from Colombia. The presence of Colombian nationals within the population served by SAMU underscores the wide array of individuals who turn to the organization for help, further evidencing the extensive geographical spread of SAMU's impact.

**Migrant Population by Gender/Family Group: June 21/2022 to July 25, 2023 (1,879 families)**

**Total Families Attended**



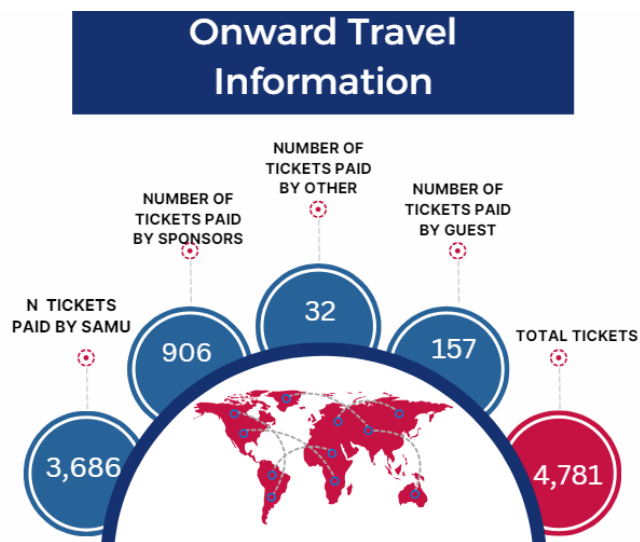
In July, SAMU First Response continued to offer its vital services to an increasing number of families. During this month, the organization extended its care and support to **153** families, reflecting its commitment to assisting those who are often most vulnerable during their migratory journeys.

These families come with diverse backgrounds, experiences, and needs, each with a unique story to tell. They are often in search of not just better living conditions, but also safety, security, and the chance for a stable future for their children. SAMU's role extends beyond just immediate assistance; it's about helping these families navigate the

complexities of their journey, offering a sense of hope and direction amid uncertainty.

But June's efforts are part of a larger, ongoing mission. Since the start of its operations, SAMU has supported an impressive total of **1,879** families. This significant figure embodies the long-term, sustained impact of SAMU's work, reaching far beyond the immediate, day-to-day services. Each family attended to represents a testament to the enduring commitment of SAMU in providing necessary care, guidance, and resources.

## Onward Travel June 21, 2022 – July 25, 2023



Since the commencement of its operation, SAMU First Response has significantly impacted the lives of migrants through the provision of essential travel assistance. As part of its dedicated service offering, SAMU has facilitated the purchase of an impressive total of **3,686** tickets for those migrants who were unable to shoulder the cost themselves. This has enabled them to reach their final destinations, often marking the start of their new journey in a safe and dignified manner.

The number of tickets purchased is a testament to SAMU's commitment to

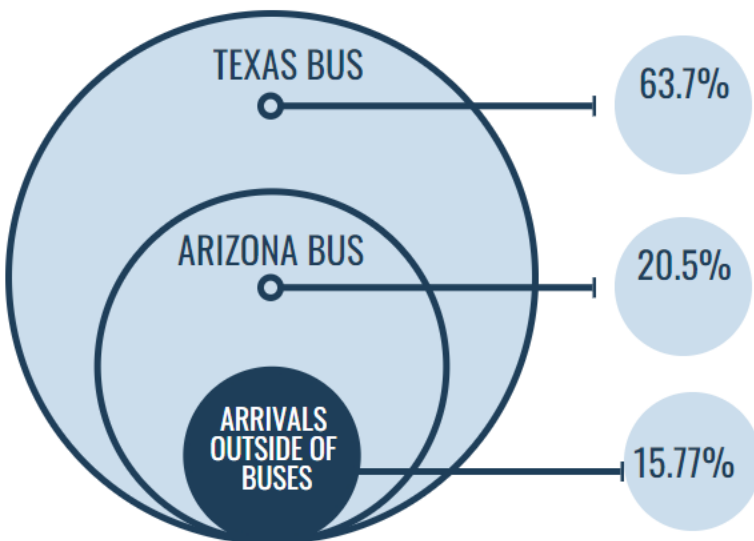
ensuring that financial constraints do not inhibit the migrants' ability to move forward. By purchasing these tickets, SAMU provides more than just a tangible commodity; it offers hope, empowerment, and the promise of a fresh start in a new location.

In addition to SAMU's efforts, a network of sponsors has also contributed to this noble cause. These generous benefactors have purchased **906** tickets, further augmenting the overall support provided to the migrant population. Their contribution reflects the power of collective action and the positive impact that can result from a community's compassion and generosity.

In the spirit of collaboration, other organizations have stepped in and contributed to this effort by purchasing **32** tickets. This demonstrates the strength of cross-organizational collaboration in supporting migrant journeys, reaffirming that the task of migrant aid is a shared responsibility.

Finally, despite the financial challenges they face, some migrants have managed to independently secure their travel arrangements. A total of **157** tickets have been purchased directly by the migrants themselves, which signifies their determination and resilience in the face of adversity.

## Mode of Arrival to Washington, D.C. in



When considering the various channels through which migrants arrive at SAMU First Response, a distinct pattern emerges, painting a vivid picture of the journeys these individuals undertake. The majority, around **63.7%**, arrived via bus from Texas. This sizable proportion underscores the significant role of this southern state as a major entry point for migrants. The journeys these individuals undertake are often fraught with difficulty, but upon arrival, they find in

SAMU a beacon of hope and support.

Arizona is another significant source, accounting for **20.5%** of the migrant influx. Like Texas, it serves as a critical entry point into the country and thus, inevitably, into the supportive network that SAMU provides. The resilience of these migrants, who brave long and arduous journeys, is truly commendable and speaks volumes about their resolve to seek better lives.

Interestingly, around **15.77%** of migrants arrived through other means outside of the standard bus routes. These alternative routes might encompass a diverse range of travel methods and speak to the myriad ways individuals navigate their journey to reach the safety and support SAMU offers.