

PEDESTRIAN & BICYCLE PRIORITY INITIATIVES

Developed for Inclusion in the TPB's
2018 Long-Range Transportation Plan
Visualize 2045

John Swanson
Transportation Planner

Transportation Planning Board
January 17, 2018



Presentation Overview

- Regional Policy Framework
- New Long-Range Plan: Visualize 2045
- Priority Initiative 1: Completion of the National Capital Trail
- Priority Initiative 2: Access Improvements to High-Capacity Transit Stations

Recommendation to the TPB:

Endorse the two priority initiatives for inclusion in Visualize 2045 and for use in regional planning activities.



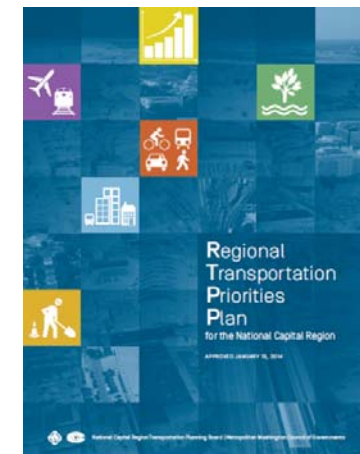
Regional Policy Framework

TPB Vision (1998)

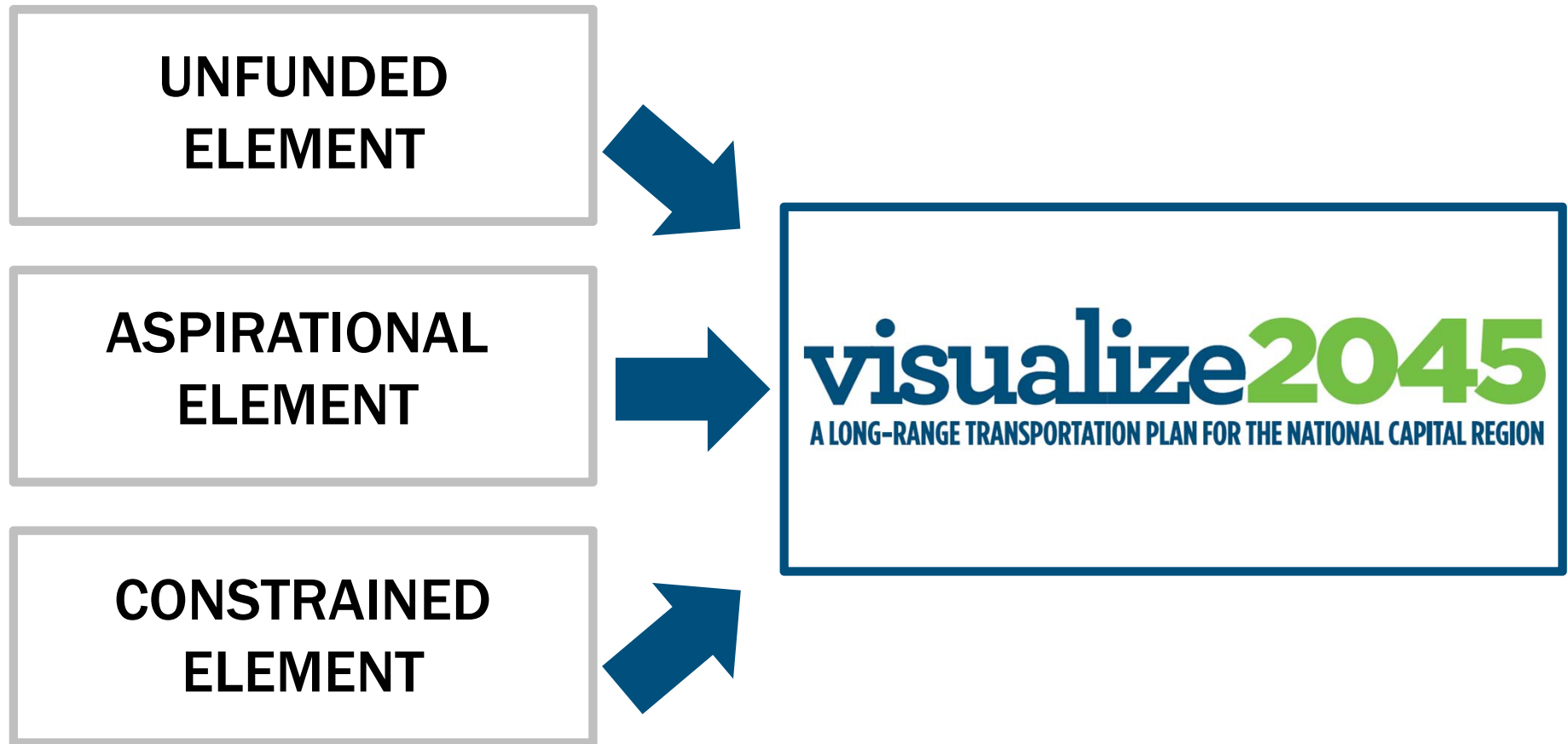
- “Make transportation facilities “safer, more accessible, and less intimidating for pedestrians, bicyclists, and persons with special needs.”

Regional Transportation Priorities Plan (2014)

- Expansion of pedestrian and bicycle infrastructure throughout the region
- Activity Centers: Connections and Circulation



New Long-Range Plan



Bike-Ped Priorities for *Visualize 2045*

ASPIRATIONAL ELEMENT

1. National Capital Trail
2. Access Improvements to High-Capacity Transit Stations



Why these Priorities?

- Promote regional policies
- Build on existing work
- Connect to the regional system

Priority Initiative 1: Completion of the National Capital Trail



Mount Vernon Trail (BeyondDC, flickr.com)

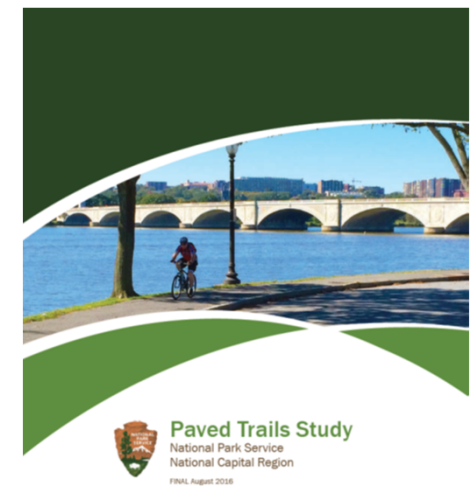
“The NCT is compelling because it is simple, understandable, and refrains from trying to be overly ambitious or inclusive of all trails in the National Capital Region or broader region.”

-NPS Paved Trails Plan, 2016



Evolution of an Idea

- 1990: National Park Service *Paved Recreation Trails of the National Capital Region*
- 2014: TPB Bicycle Beltway Working Group
- 2016: National Park Service's *Paved Trails Plan*



Chesapeake & Ohio Canal National Historical Park
George Washington Memorial Parkway
National Capital Parks - East
National Mall and Memorial Parks
Potomac Heritage
Rock Creek Park

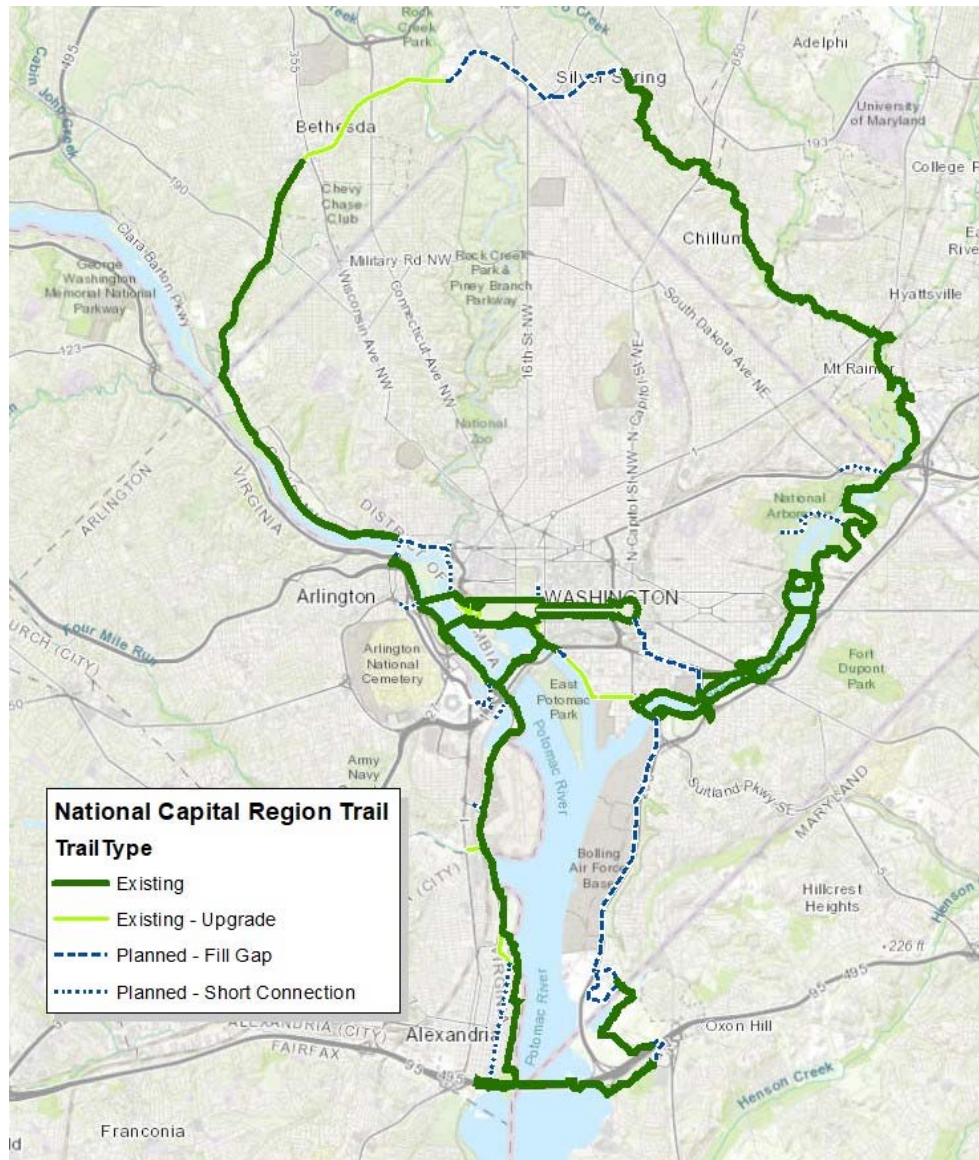
AECOM

Working Group Vision

- Connect major attractions, Activity Centers, and Transit Stations
- Attract both visitors and residents
- Be useable by persons of all ages and abilities
- Include clear and consistent wayfinding
- Provide good connections to surrounding communities
- Be an all-weather facility
- Be achievable or “within reach” financially and politically
- Use existing Right of Way and existing facilities wherever possible
- Be maintained in a State of Good Repair



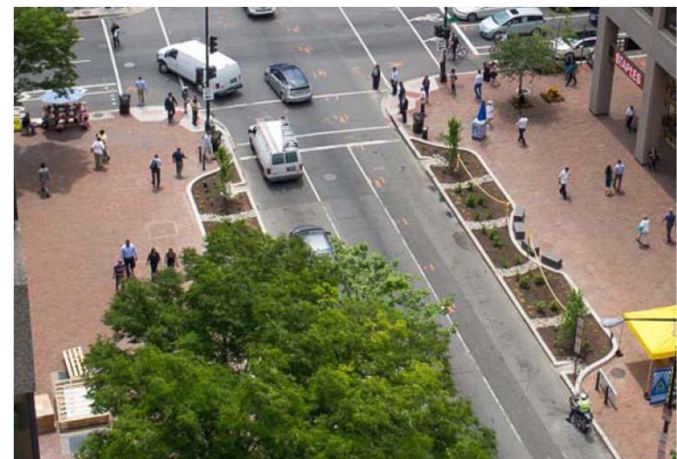
Achievable Next Steps



- 60 total miles total
- 21 miles unconstructed
- 3 miles need upgrading

Priority Initiative 2: Access Improvements to High-Capacity Transit Stations

Increase access to transit through improved first- and last-mile connections on foot or by bike



Walksheds Vary Among Stations



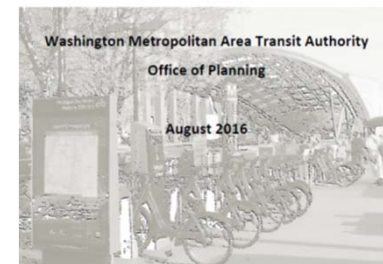
WMATA

Building on Past Work

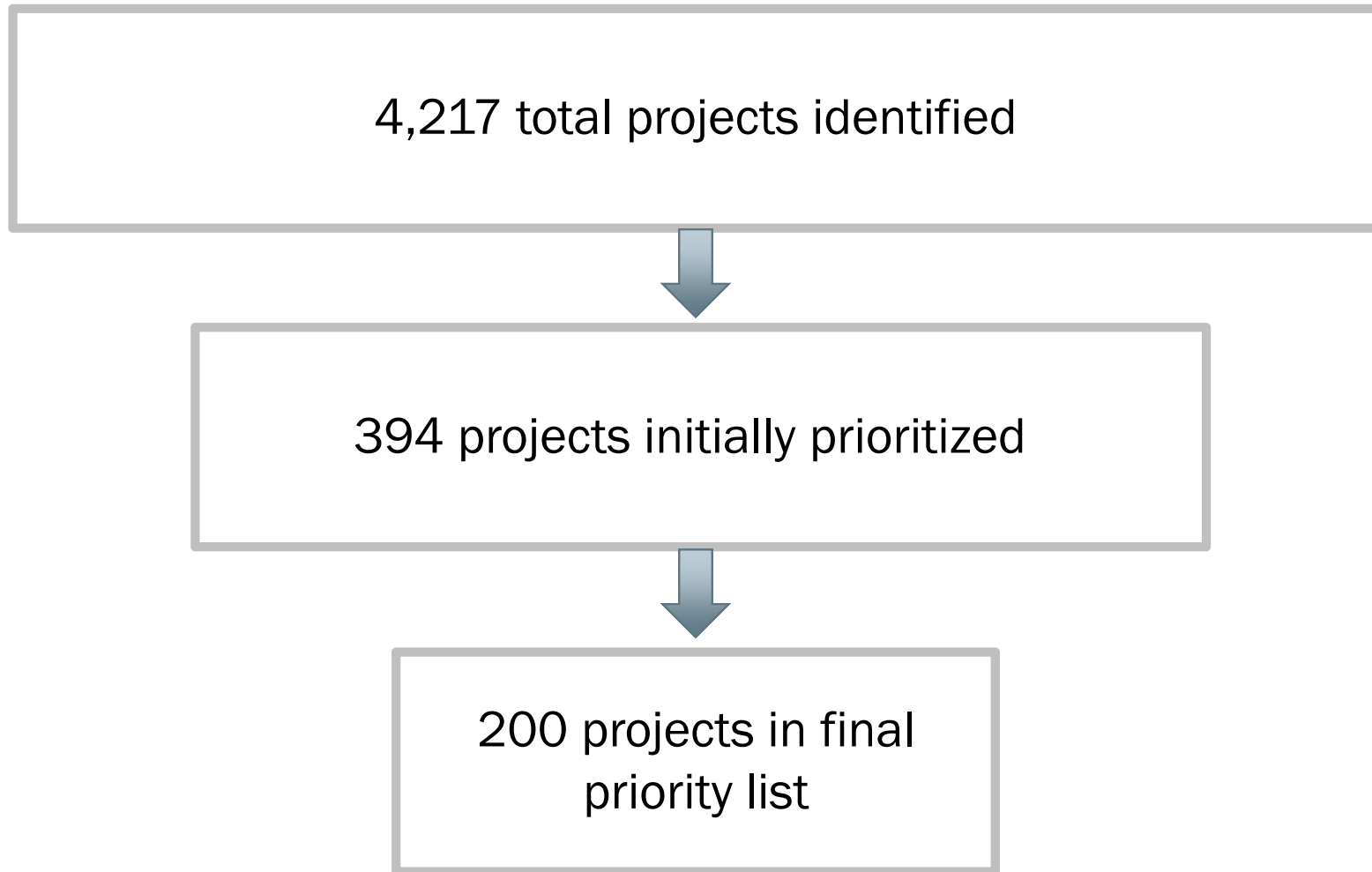
- 2015: TPB study “Improving Bicycle and Pedestrian Access at Select Rail Stations” (TCSP funded) – Identified station access improvements at 25 rail stations
- 2016: WMATA “Metrorail Station Investment Strategy” – Identified station access improvements for all remaining stations (91 total stations)



Metrorail Station Investment Strategy
Summary Report

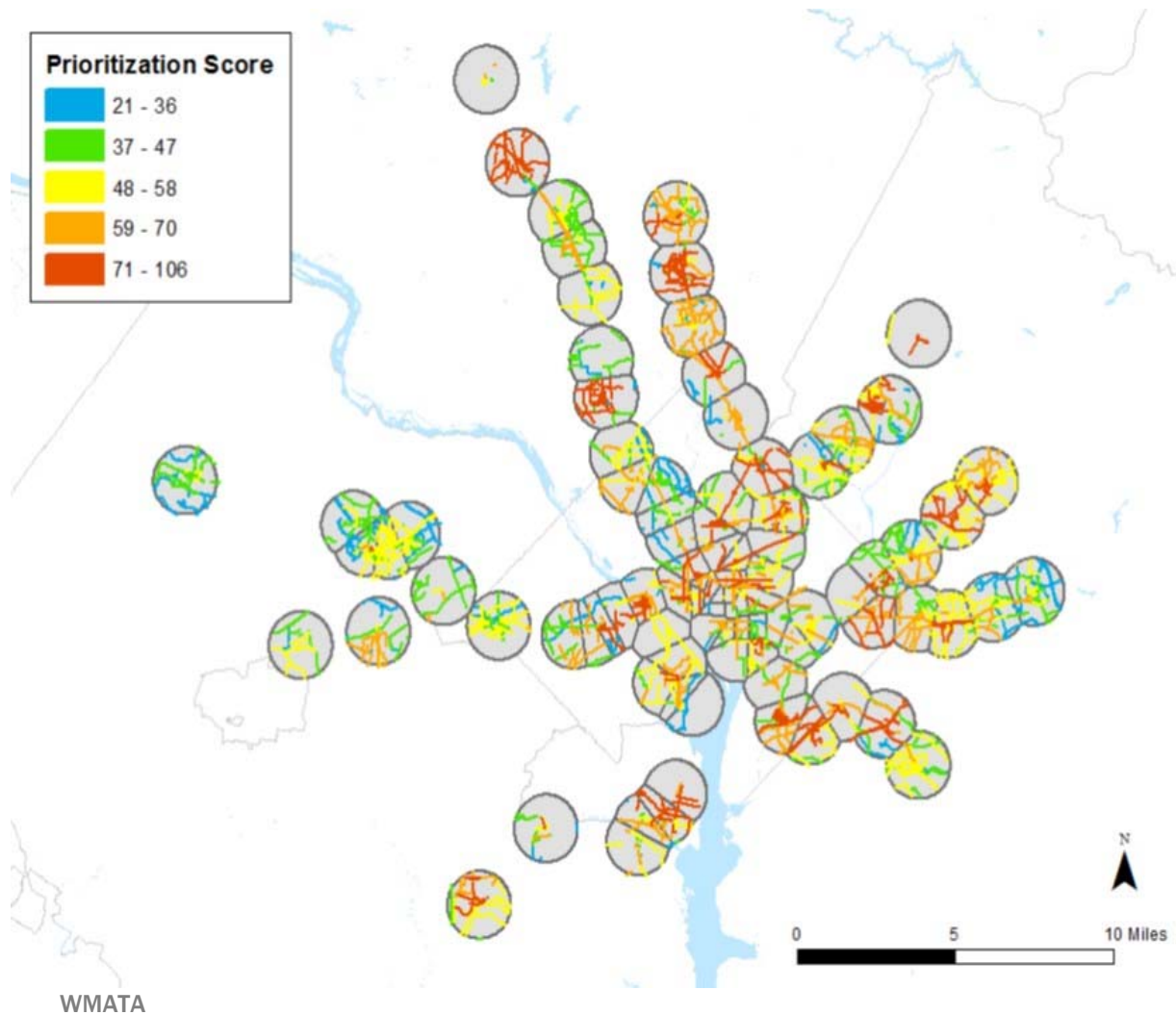


WMATA Prioritization



Prioritization of Projects

Because realities on the ground may have changed, this prioritization process should be considered illustrative.



Next Steps: A Call to Action

Recommendation to the TPB:

Endorse the two priority initiatives for inclusion in Visualize 2045 and for use in regional planning activities.

- Use the priorities as a factor in selecting projects for the TLC Program and the Transportation Alternatives Program
- Consider pursuing funding for these priorities as a region (e.g., through a TIGER application)
- Promote implementation at the local level



The Ride Starts (Joe Flood, flickr.com)

John Swanson

Transportation Planner

(202) 962-3295

jswanson@mwkog.org

mwkog.org/tpb

Metropolitan Washington Council of Governments

777 North Capitol Street NE, Suite 300

Washington, DC 20002



National Capital Region
Transportation Planning Board