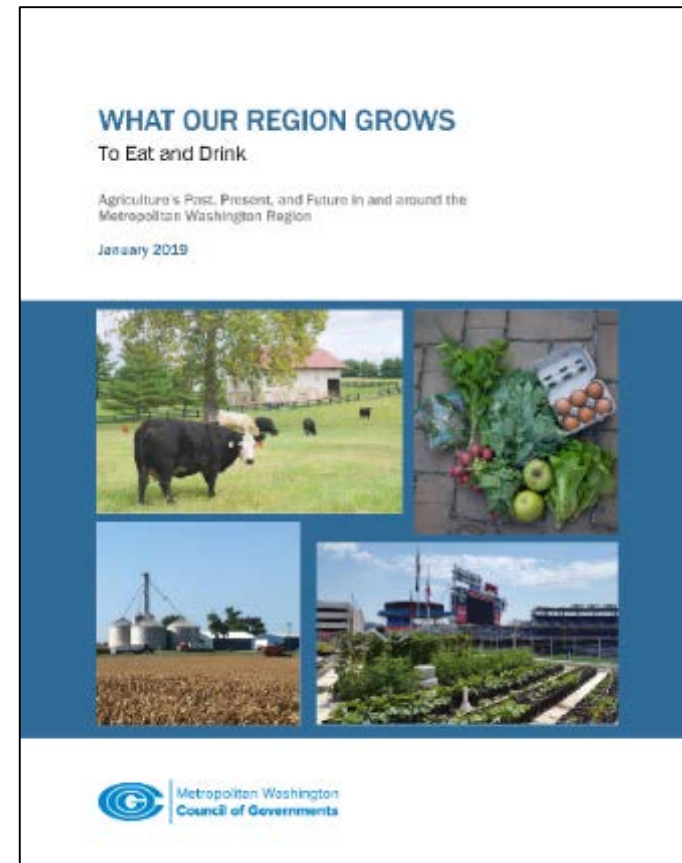


CBPC Ag Task Force Update

Formed Ag Task Force from the Chesapeake Bay Policy and Water Resources Committee (CBPC) at the March CBPC Meeting

- 6 elected leaders from MD and VA

Assessing regional capacity to implement *What Our Region Grows* report recommendations

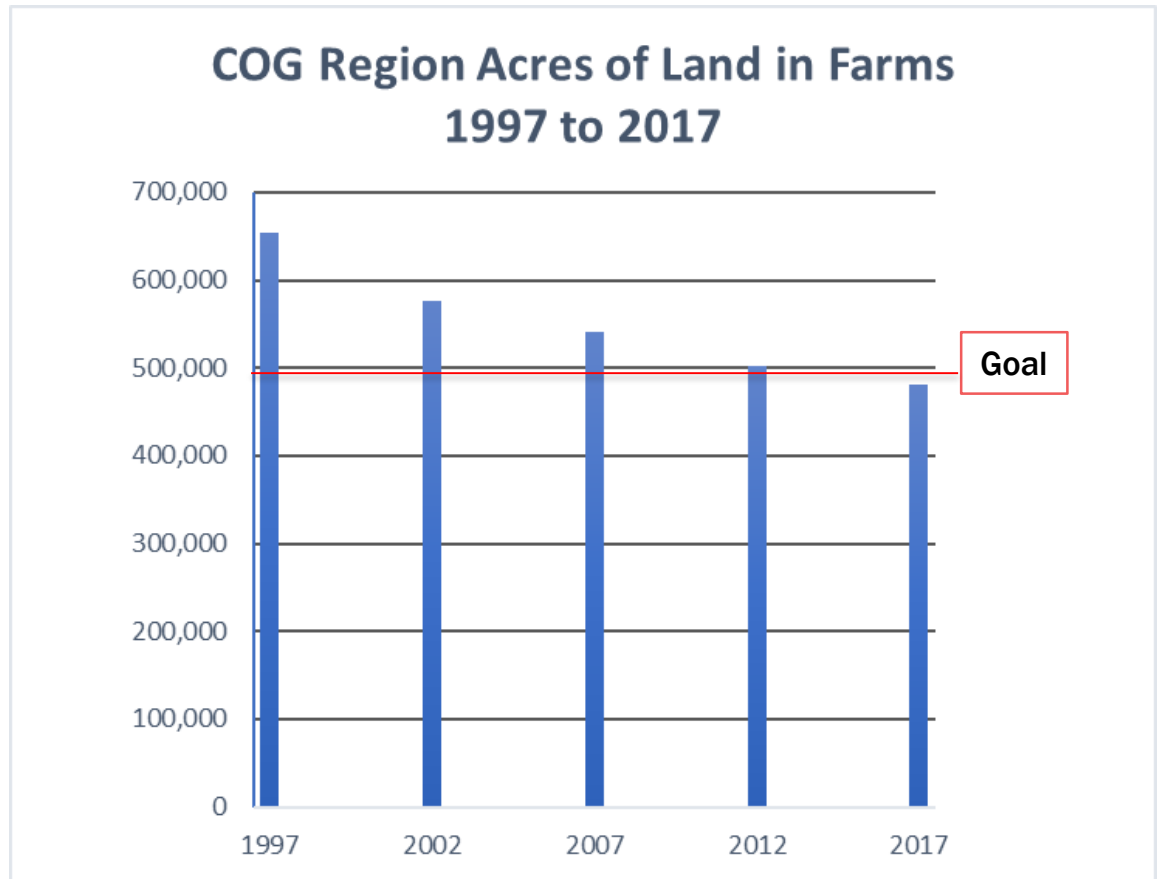


2019 *What Our Region Grows* report (above) includes 2012 Census of Ag data, an update with the 2017 Census of Ag data is underway

Critical Timing of Ag Task Force Work

**Region Forward:
Maintain more
than 497,500
acres of land in
farms**

New data released
in April:
480,281 acres for
the COG Region



Food and Ag Economic Impact

Washington, D.C.

\$5.47 billion in economic impact
Production, Distribution, Grocery,
Restaurants, & Support Industries ¹

Maryland (COG localities)

\$2.9 billion in economic impact
Agriculture, Forestry, Aquaculture, &
Support Industries ²

Virginia (COG localities)

\$2.23 billion in economic impact
Agriculture & Forestry ³



Image: SimonTuckett.com

¹ Preliminary findings from *DC Food Economy Study*

² *Economic Impact of Select Resource Based Industries in Maryland*

³ *The Economic Impact of Virginia's Agricultural and Forest Industries*

Initial Ag Task Force Findings

COG should be a lead convener for sustained, regional action on the food and farm economy

Key Issue Areas:

- Jobs and workforce
- Emergency preparedness/resiliency
- Land, climate, water, and soil health
- Education
- Sustainable agriculture
- Connectivity and innovation



Next Steps

Articulate clear goal to drive regional commitment

Broaden interviews with regional leaders for the Ag Task Force assessment

Propose structure, budget, and opportunities to enhance policies for local and regional benefit

Deliver final assessment (tentative: July)



Discussion

- Ag Task Force member observations
- Issues to be covered in final assessment
- Interview requests



Photo Credit: Niraj Ray, Cultivate the City

COG Staff Contacts: Lindsay Smith (lsmith@mwkog.org), Brian LeCouteur (blecouteur@mwkog.org), Steve Bieber (sbieber@mwkog.org)