

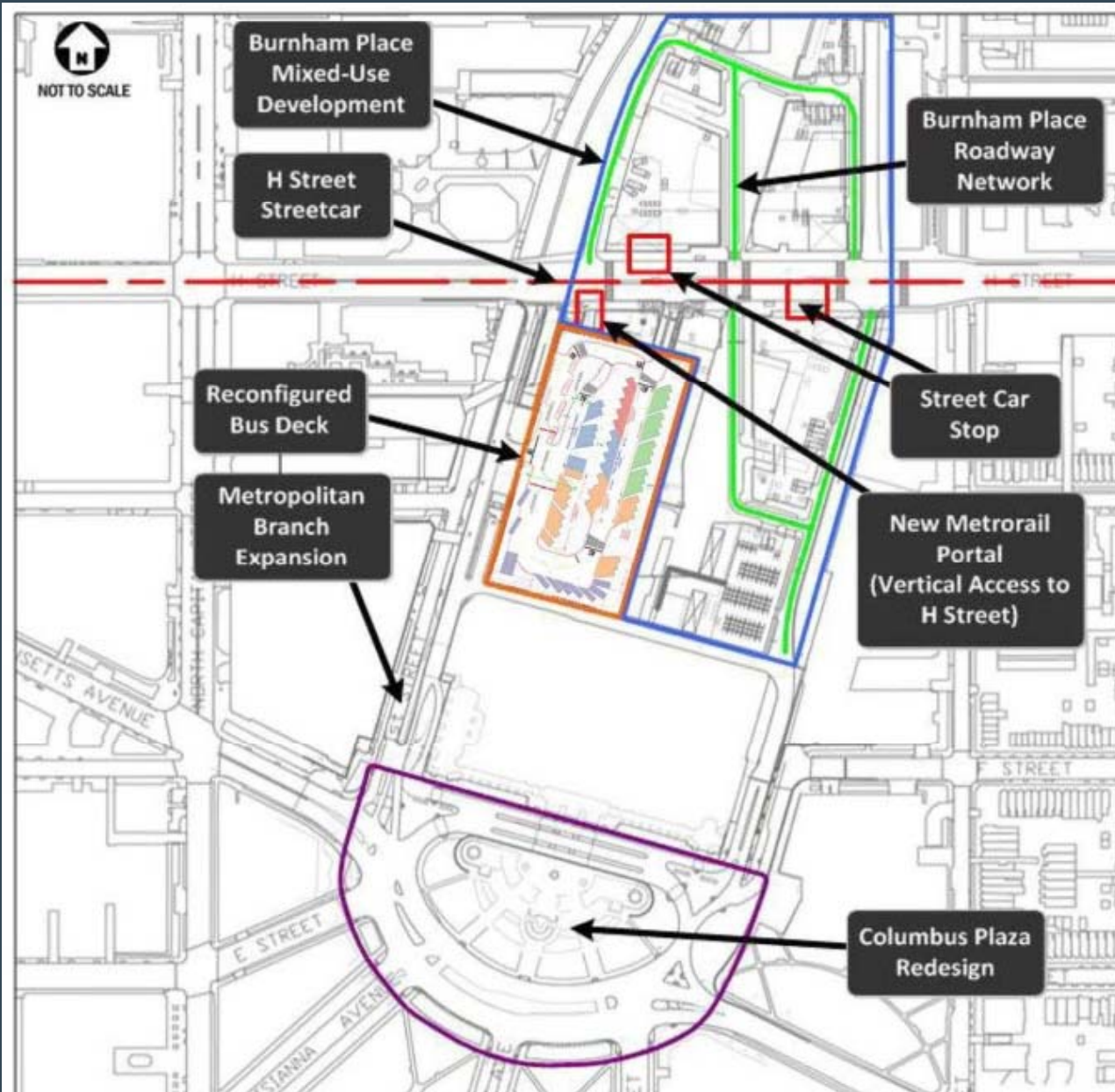
WASHINGTON UNION STATION

New Solutions to Managing Intercity Bus Operations

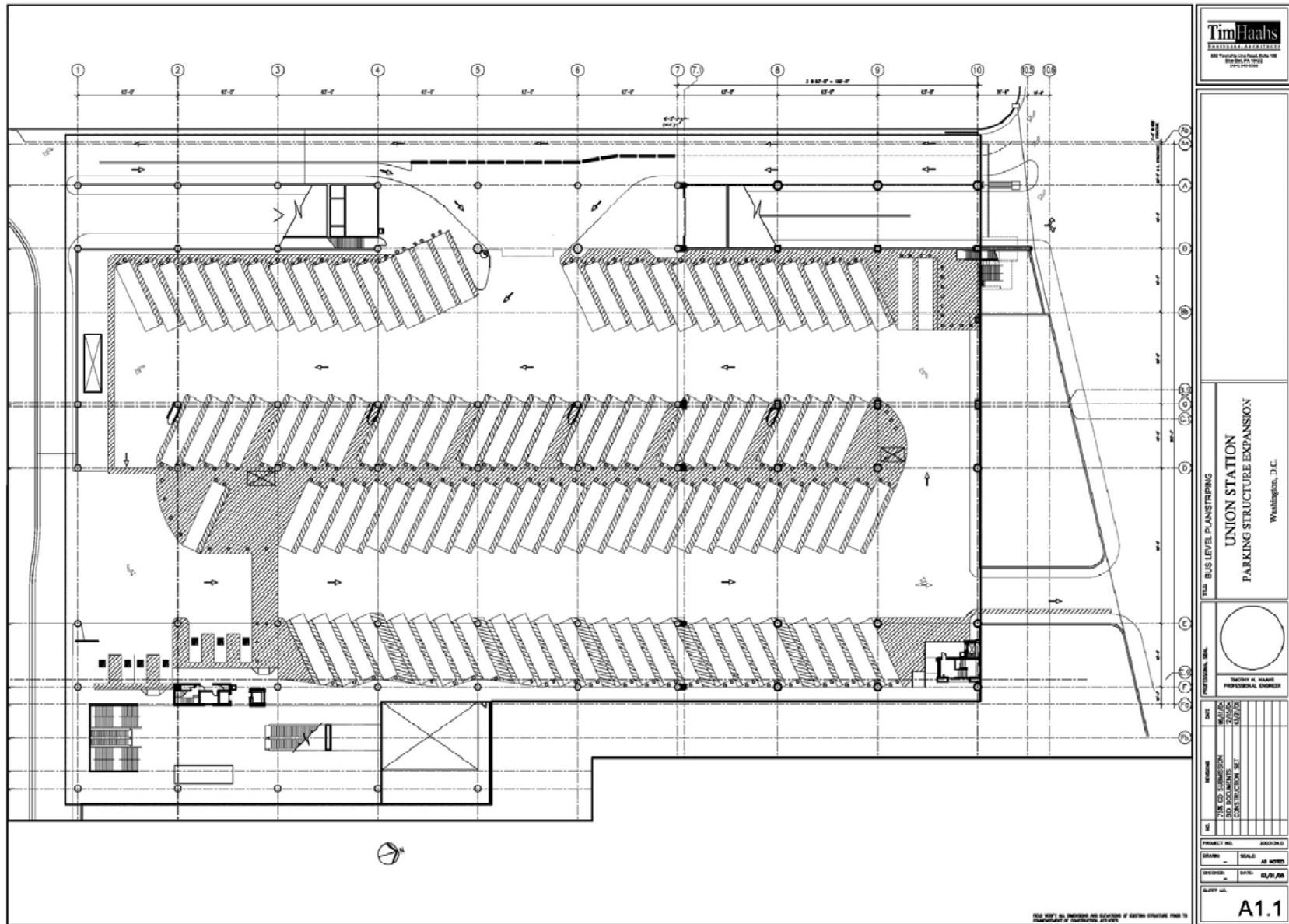
Nzinga Baker, Vice President
Union Station Redevelopment Corp.

February 26, 2013

WASHINGTON DC UNION STATION PRECINCT FUTURE DEVELOPMENT



PRIOR BUS DECK LAYOUT – SUMMER 2011



THIS BUS LEVEL PLANSTRIPING
UNION STATION
PARKING STRUCTURE EXPANSION
Washington, D.C.

PROFESSIONAL SEAL
NICHOLE H. HANSEN
PROFESSIONAL ENGINEER

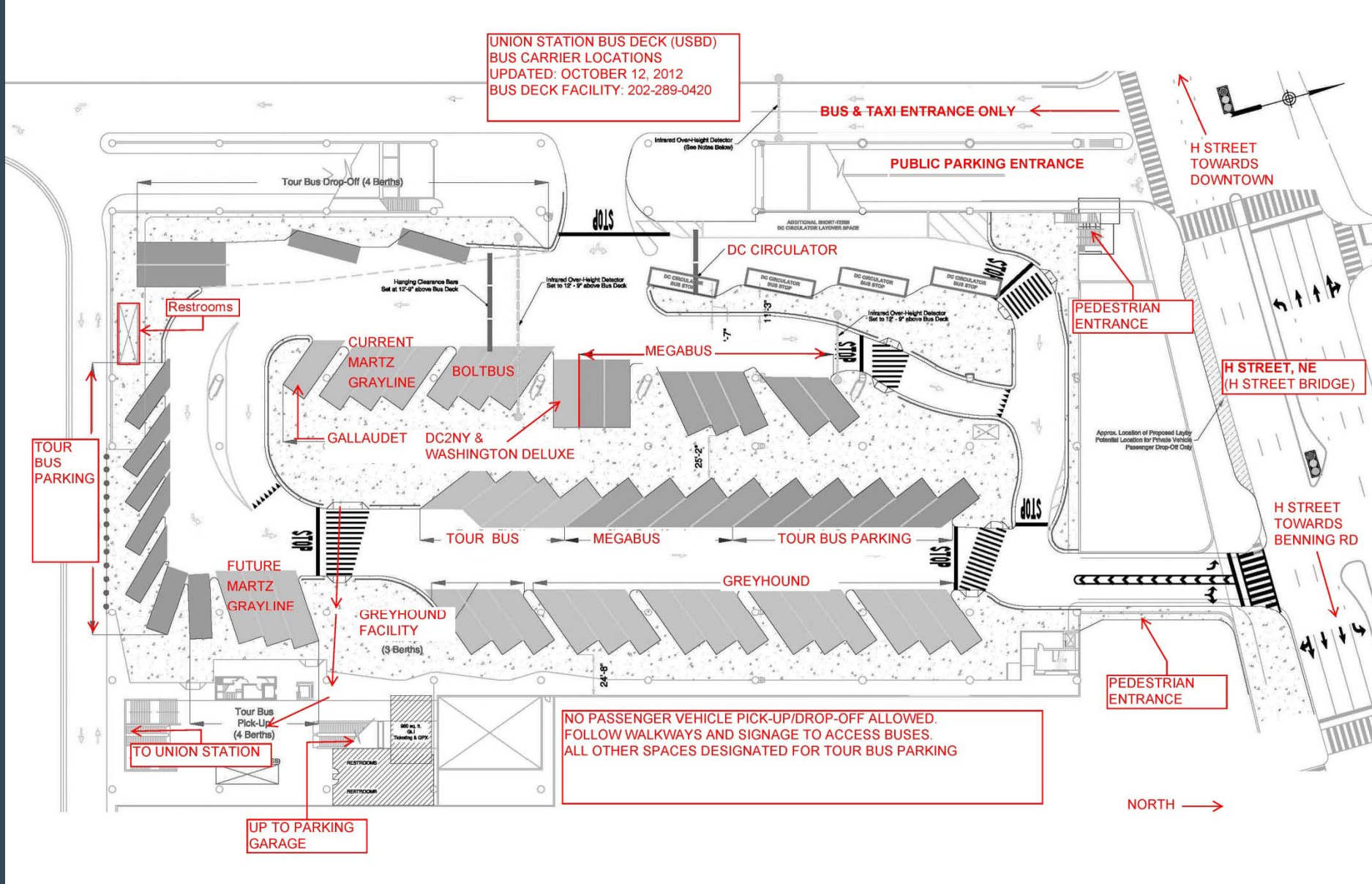


DATE	REVISIONS		
NO.	DATE	BY	DESCRIPTION
1			FOR CONSTRUCTION
2			FOR CONSTRUCTION SET
3			FOR CONSTRUCTION SET
4			FOR CONSTRUCTION SET
5			FOR CONSTRUCTION SET
6			FOR CONSTRUCTION SET
7			FOR CONSTRUCTION SET
8			FOR CONSTRUCTION SET
9			FOR CONSTRUCTION SET
10			FOR CONSTRUCTION SET
11			FOR CONSTRUCTION SET
12			FOR CONSTRUCTION SET
13			FOR CONSTRUCTION SET
14			FOR CONSTRUCTION SET
15			FOR CONSTRUCTION SET
16			FOR CONSTRUCTION SET
17			FOR CONSTRUCTION SET
18			FOR CONSTRUCTION SET
19			FOR CONSTRUCTION SET
20			FOR CONSTRUCTION SET
21			FOR CONSTRUCTION SET
22			FOR CONSTRUCTION SET
23			FOR CONSTRUCTION SET
24			FOR CONSTRUCTION SET
25			FOR CONSTRUCTION SET
26			FOR CONSTRUCTION SET
27			FOR CONSTRUCTION SET
28			FOR CONSTRUCTION SET
29			FOR CONSTRUCTION SET
30			FOR CONSTRUCTION SET
31			FOR CONSTRUCTION SET
32			FOR CONSTRUCTION SET
33			FOR CONSTRUCTION SET
34			FOR CONSTRUCTION SET
35			FOR CONSTRUCTION SET
36			FOR CONSTRUCTION SET
37			FOR CONSTRUCTION SET
38			FOR CONSTRUCTION SET
39			FOR CONSTRUCTION SET
40			FOR CONSTRUCTION SET
41			FOR CONSTRUCTION SET
42			FOR CONSTRUCTION SET
43			FOR CONSTRUCTION SET
44			FOR CONSTRUCTION SET
45			FOR CONSTRUCTION SET
46			FOR CONSTRUCTION SET
47			FOR CONSTRUCTION SET
48			FOR CONSTRUCTION SET
49			FOR CONSTRUCTION SET
50			FOR CONSTRUCTION SET
51			FOR CONSTRUCTION SET
52			FOR CONSTRUCTION SET
53			FOR CONSTRUCTION SET
54			FOR CONSTRUCTION SET
55			FOR CONSTRUCTION SET
56			FOR CONSTRUCTION SET
57			FOR CONSTRUCTION SET
58			FOR CONSTRUCTION SET
59			FOR CONSTRUCTION SET
60			FOR CONSTRUCTION SET
61			FOR CONSTRUCTION SET
62			FOR CONSTRUCTION SET
63			FOR CONSTRUCTION SET
64			FOR CONSTRUCTION SET
65			FOR CONSTRUCTION SET
66			FOR CONSTRUCTION SET
67			FOR CONSTRUCTION SET
68			FOR CONSTRUCTION SET
69			FOR CONSTRUCTION SET
70			FOR CONSTRUCTION SET
71			FOR CONSTRUCTION SET
72			FOR CONSTRUCTION SET
73			FOR CONSTRUCTION SET
74			FOR CONSTRUCTION SET
75			FOR CONSTRUCTION SET
76			FOR CONSTRUCTION SET
77			FOR CONSTRUCTION SET
78			FOR CONSTRUCTION SET
79			FOR CONSTRUCTION SET
80			FOR CONSTRUCTION SET
81			FOR CONSTRUCTION SET
82			FOR CONSTRUCTION SET
83			FOR CONSTRUCTION SET
84			FOR CONSTRUCTION SET
85			FOR CONSTRUCTION SET
86			FOR CONSTRUCTION SET
87			FOR CONSTRUCTION SET
88			FOR CONSTRUCTION SET
89			FOR CONSTRUCTION SET
90			FOR CONSTRUCTION SET
91			FOR CONSTRUCTION SET
92			FOR CONSTRUCTION SET
93			FOR CONSTRUCTION SET
94			FOR CONSTRUCTION SET
95			FOR CONSTRUCTION SET
96			FOR CONSTRUCTION SET
97			FOR CONSTRUCTION SET
98			FOR CONSTRUCTION SET
99			FOR CONSTRUCTION SET
100			FOR CONSTRUCTION SET

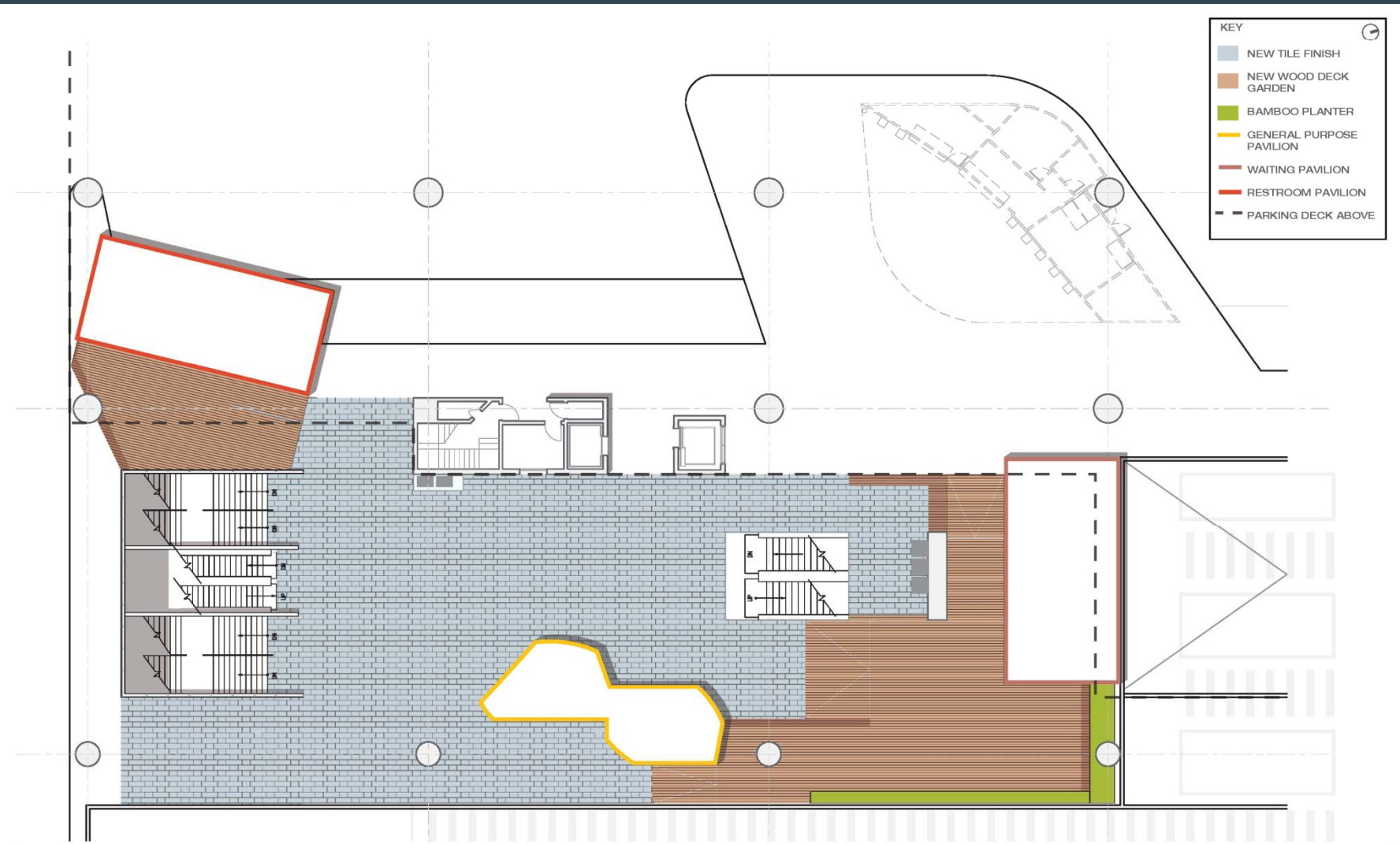
A1.1

SEE SET OF DRAWINGS AND SPECIFICATIONS OF EXISTING STRUCTURE FOR THE LOCATION OF STRUCTURAL JOISTS.

CURRENT BUS DECK LAYOUT



PROPOSED BUS DECK DESIGN



UNION STATION
REDEVELOPMENT CORPORATION

SITE PLAN

STUDIOTWENTYSEVENARCHITECTURE

OCTOBER 2, 2012

PRE CONSTRUCTION CONDITION



CURRENT CONDITION



FUTURE CONDITION



UNION STATION
REDEVELOPMENT CORPORATION

OCTOBER 2, 2012

RENDERING TOWARD PAVILION 1 + 2

STUDIO **TWENTYSEVEN** ARCHITECTURE

BUS DECK PERSPECTIVE RENDERING



UNION STATION
REDEVELOPMENT CORPORATION

OCTOBER 2, 2012

RENDERING OF PAVILION 3

STUDIO **TWENTYSEVEN** ARCHITECTURE

BUS DECK PERSPECTIVE RENDERING



UNION STATION
REDEVELOPMENT CORPORATION

RENDERING OF PAVILION 4

STUDIO **TWENTYSEVEN** ARCHITECTURE

OCTOBER 2, 2012

GREYHOUND TERMINAL



INITIAL ISSUES IDENTIFIED

- Pedestrian Wayfinding Needs
- Increased Passenger Vehicle Issues



IMPROVEMENTS COMING SOON

- Waiting Area Completion – April 2013
- Bus Deck Wayfinding and Signage Install – May 2013
- Restroom Completion – June 2013
- Improvement Project Completion – July 2013