



MDOT'S POLICY, FUNDING, &, PRIORITIZATION PROCESS

SEPTEMBER 18, 2023

TPB Access for All Advisory Committee

presented by: Kari Snyder, Regional Planner
Maryland Department of Transportation
Office of Planning and Capital Programming

MDOT POLICY FRAMEWORK

- 2040 Maryland Transportation Plan (MTP): 20-year mission document for a balanced, multimodal approach to transportation planning
 - This shapes our transportation priorities and is updated every 5 years.
 - Shaped by Goals, Objectives, and Performance Measures
 - Robust public involvement and feedback process at the front end with the MTP and the back end with the Attainment Report
- Existing MDOT 2040 MTP Goals
 - Ensure a **Safe, Secure, and Resilient** Transportation System
 - Facilitate **Economic Opportunity and Reduce Congestion** in Maryland through Strategic System Expansion
 - **Maintain a High Standard** and Modernize Maryland's Multimodal Transportation System
 - Improve the **Quality and Efficiency** of the Transportation System to Enhance the Customer Experience
 - Ensure **Environmental Protection** and Sensitivity
 - Promote **Fiscal Responsibility**
 - Provide Better Transportation **Choices and Connections**

2050 MARYLAND TRANSPORTATION PLAN UPDATE

2040 vs 2050 Goals:

- **Safety & Security**

- Existing GOAL: Ensure a Safe, Secure, and Resilient Transportation System

- **System Quality**

- Existing GOAL: Facilitate Economic Opportunity and Reduce Congestion in Maryland through Strategic System Expansion
- Existing GOAL: Maintain a High Standard and Modernize Maryland's Multimodal Transportation System
- Existing GOAL: Improve the Quality and Efficiency of the Transportation System to Enhance the Customer Experience (also contained in Customer Experience guideline)
- Existing GOAL: Provide Better Transportation Choices and Connections

- **Environmental Protection**

- Existing GOAL: Ensure Environmental Protection and Sensitivity

- **Management**

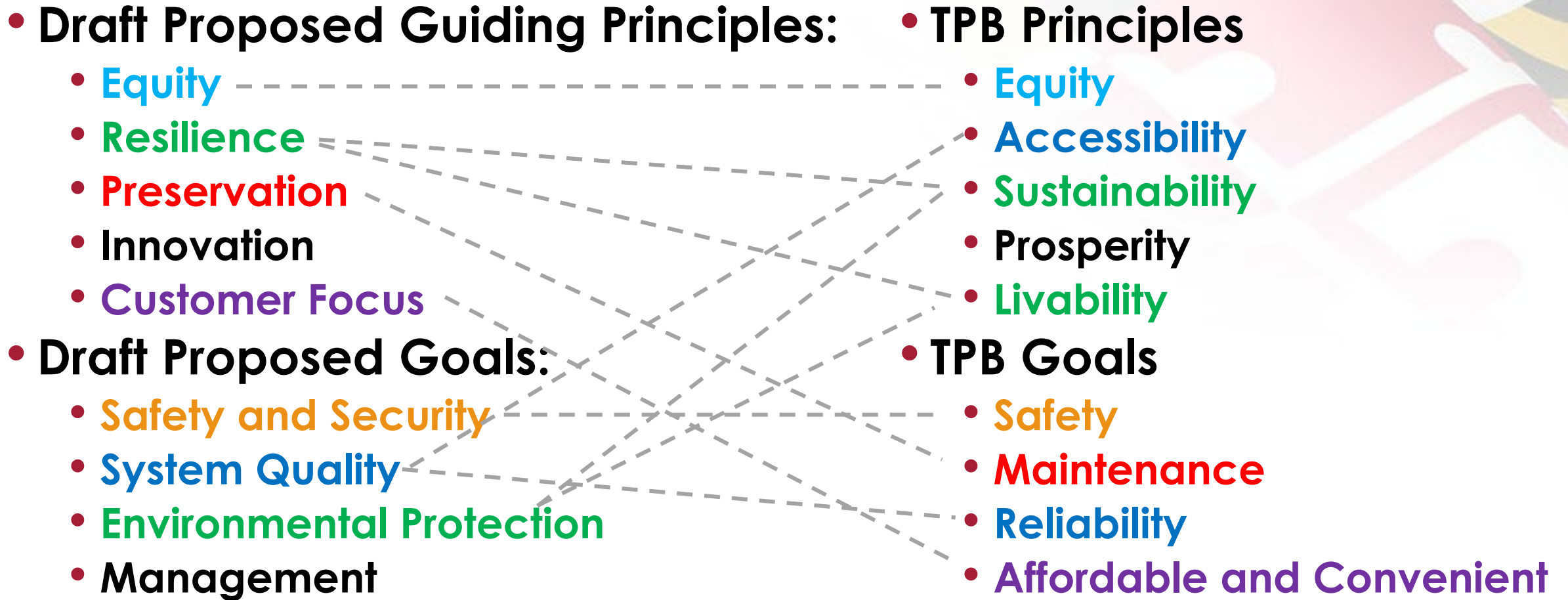
- Existing GOAL: Promote Fiscal Responsibility

2050 PROPOSED GUIDING PRINCIPLES

Guiding principles align mission, values, and capabilities with the overall vision and serve as overarching, cross-cutting ideas that MDOT strives for through each of the goals.

- **Equity:** Integrate equity considerations in all aspects of transportation planning, programming, and operational processes.
- **Resilience:** Improve the transportation system's ability to provide reliable service throughout natural weather events and man-made threats.
- **Preservation:** Preserve the condition of the existing transportation system assets to provide safe and efficient movement.
- **Innovation:** Explore new ideas and technologies to transform the transportation system.
- **Customer Focus:** Maintain an emphasis on improving the experience of the community we serve.

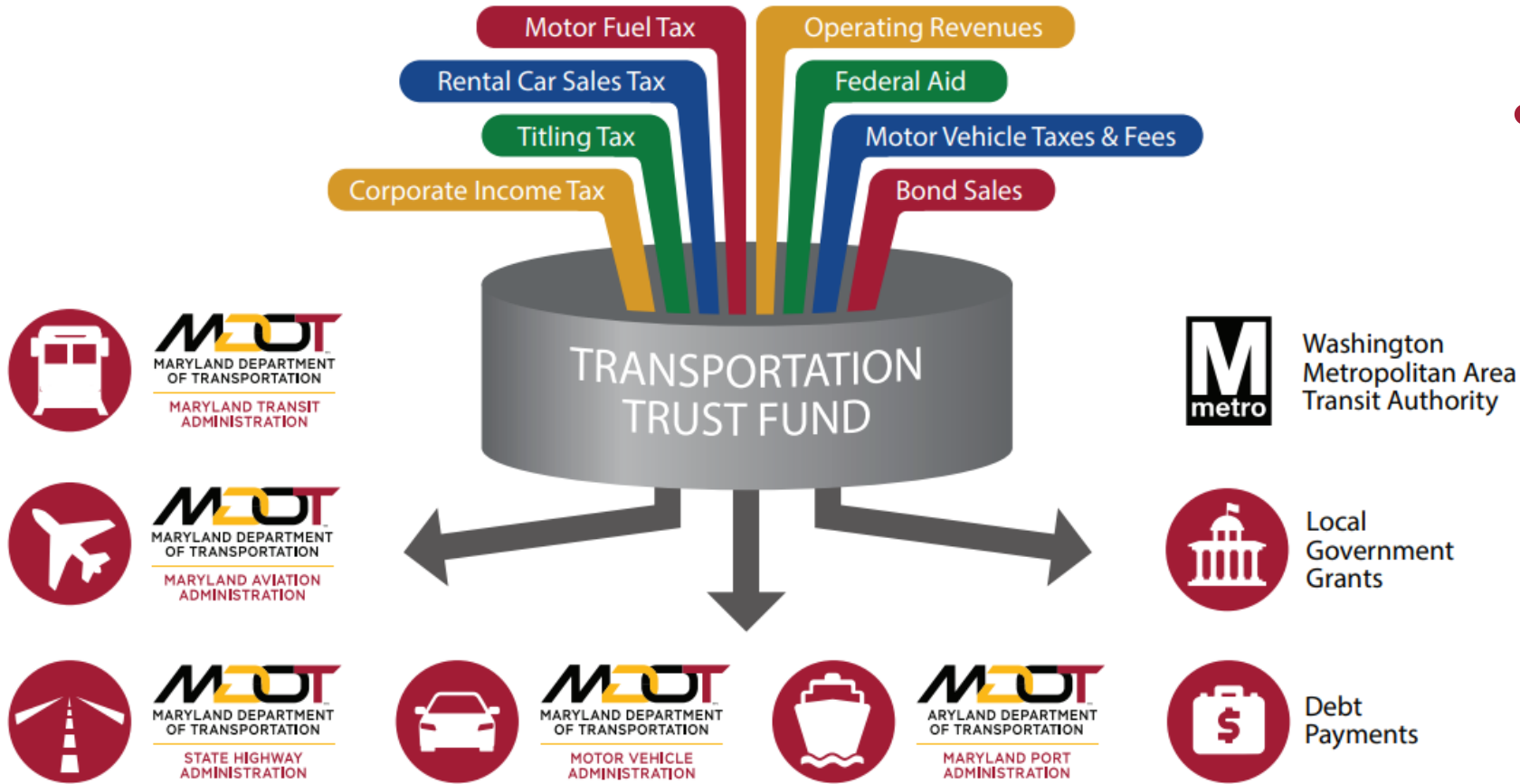
MDOT & TPB POLICY CORRELATION



TRANSPORTATION FUNDING & THE CTP

- The Consolidated Transportation Program (CTP) is MDOT's fiscally constrained **6-year capital budget**
 - Contains all State major and minor transportation projects.
- The CTP is presented annually by the Governor and approved by the Maryland General Assembly's budget process
- Modal Administrations Needs Assessments
 - SHA, MTA, MPA, MVA, MAA, & MDTA
- **Public involvement and feedback through the County Priority Letters and the Secretary's Annual Tour**

HOW THE TRANSPORTATION TRUST FUND WORKS

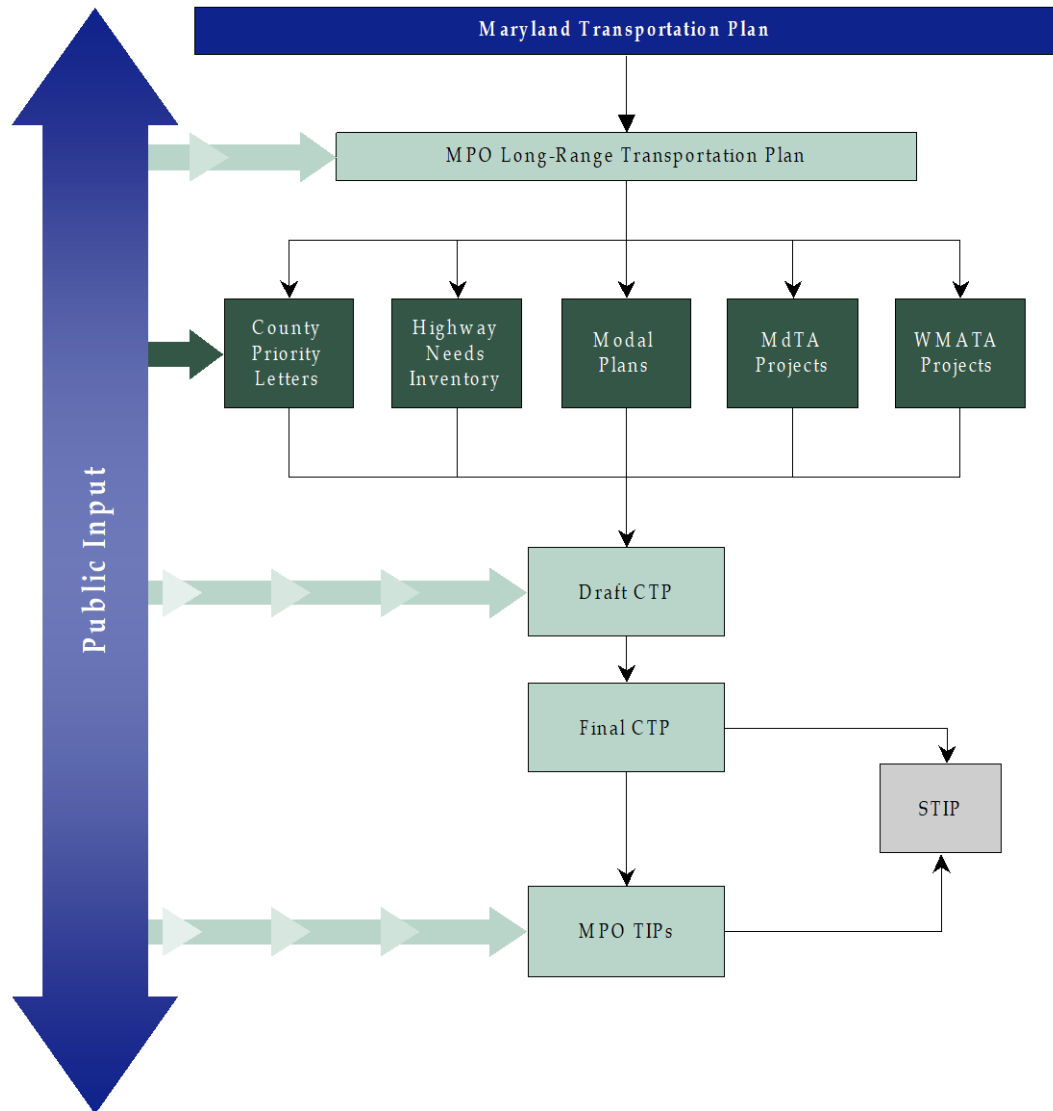


- The Transportation Trust Fund (TTF) allows transportation projects to be programmed based on when the funding is needed and available.

PRIORITY LETTERS & CHAPTER 725

- Priority letters represent each County's internal ranking of State projects deemed most important based on local need and local input. They can include:
 - Local priorities for the highway and transit systems, as well TOD sites
 - Information on project consistency with State and local plans
- Chapter 725 requires additional clarity and standards to define how MDOT evaluates and selects proposed major capital projects for inclusion in the CTP's Construction Program
 - The relationship between prioritized projects and the **long-term goals of the MTP, the Climate Action Plan Goals** (as outlined in the Greenhouse Gas Reduction Plan), and **local land use plans** must be demonstrated in this process.

PROJECT DEVELOPMENT PROCESS



- Projects are selected by a strategic decision-making process using established priorities and criteria to prioritize programs and projects.
- Projects must:
 - Meet the goals of the MTP
 - Be scored in Chapter 30
 - Be in a local Priority Letter/ consistent with local plans
 - Meet federal and legal mandates
 - Meet federal match requirements

MDOT LINKS

2040 Maryland Transportation Plan

<https://www.mdot.maryland.gov/tso/pages/Index.aspx?PageId=22>

DRAFT MDOT FY 2024-2029 CTP

[CTP.Maryland.Gov](https://www.mdot.maryland.gov/ctp)

MDOT FY 2022-2025 STIP

<https://www.mdot.maryland.gov/tso/pages/Index.aspx?PageId=117>

THANK YOU

For more information:

Kari Snyder, Regional Planner

MDOT Office of Planning & Capital Programming

ksnyder3@mdot.maryland.gov

Heather Murphy, Director

MDOT Office of Planning & Capital Programming

hmurphy@mdot.maryland.gov