

AMERICAN LEGION
BRIDGE + 270
CORRIDOR PROGRAM

Will Pines, P.E.

Maryland State Highway Administrator

December 20, 2023

AMERICAN LEGION BRIDGE AND I-270 CORRIDOR PROGRAM – STATUS UPDATE

- Governor Moore unveiled plans in August 2023 for the I-495 and I-270 corridor to enhance the Washington Region's access, opportunity, and quality of life.
 - Submitted Federal grant application
- MDOT hosted four open house meetings in November/December 2023 to engage communities and stakeholders for feedback on potential multimodal solutions for the corridor



STATUS UPDATE – WHAT HAVE WE HEARD?

- Broad Agreement
 - Strong support for a bike and pedestrian amenity across the Potomac River to connect to existing networks
 - Recognition that we must address the aging existing bridge
 - Strong support for better transit across the river
 - minimum solution of fast and convenient bus transit
 - viability of fast and convenient bus transit relies on a lane that allows buses to move



Woodrow Wilson Bridge Shared Use Path

STATUS UPDATE – WHAT'S DIFFERENT?

- We've listened to the feedback
 - De-prioritized work in the Rockville area
 - Focused on addressing ALB/495
 - Started the 270 north multi-modal study
 - Strong support for solutions for Upper Montgomery and Frederick Counties
 - Aligns with locations of existing lane drops



I-270 drops to 2 Lanes North of MD 121



I-270 South of I-370 with HOV & Collector Lanes

AMERICAN LEGION BRIDGE AND I-270 CORRIDOR PROGRAM – STATUS UPDATE

- Program vs. Project
- Priorities for the program
 - Transit and Ridesharing
 - Transit-Oriented Development
 - Bicycle and Pedestrian connections
 - Replacement of the American Legion Bridge / Phased approach to managed lanes
 - Study on I-270 north of the Intercounty Connector to evaluate multimodal strategies for the corridor (including transit, bike, pedestrian, etc.)
 - Ensuring public is fully and actively engaged in the development of the program



TRANSIT AND RIDESHARING

- Advance a range of transit and transportation demand management improvements across the corridor
- Options considering include MARC Brunswick Line, Bus Rapid Transit, and reliable commuter bus using managed lanes
- Expanded promotion of Transportation Demand Management programs now and in future



incenTrip



 **COMMUTER CONNECTIONS.**
A SMARTER WAY TO WORK

M&D
MARYLAND DEPARTMENT
OF TRANSPORTATION
STATE HIGHWAY
ADMINISTRATION

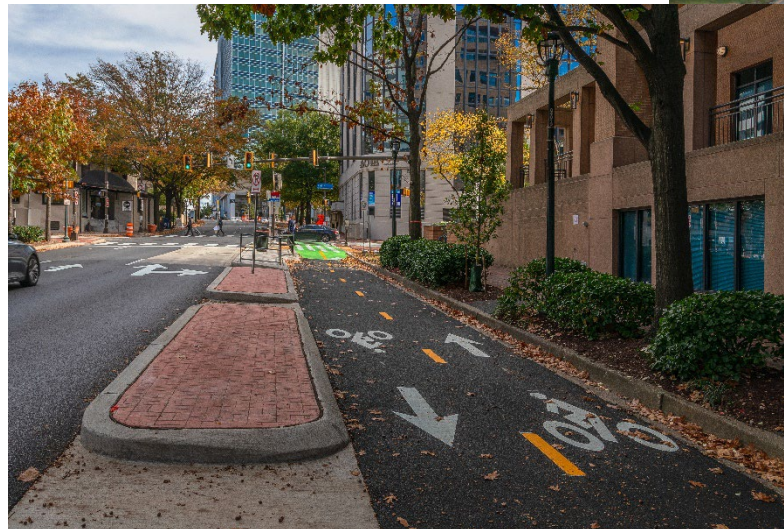
TRANSIT-ORIENTED DEVELOPMENT

- Accelerate investment in key corridor Transit-Oriented Development projects to unlock new developments that create sustainable, inclusive communities
- Help to achieve:
 - Alleviating traffic congestion
 - Minimizing carbon emissions
 - Revitalizing neighborhoods
 - Increasing housing production and affordability
 - Supporting economic development
 - Generating fare and tax revenues



BICYCLE AND PEDESTRIAN CONNECTIONS

- Improve access and safety through new and upgraded connections
- Focus on connecting transit, rideshare, rail, and active transportation facilities
- Shared-use path crossing Potomac River on new American Legion Bridge



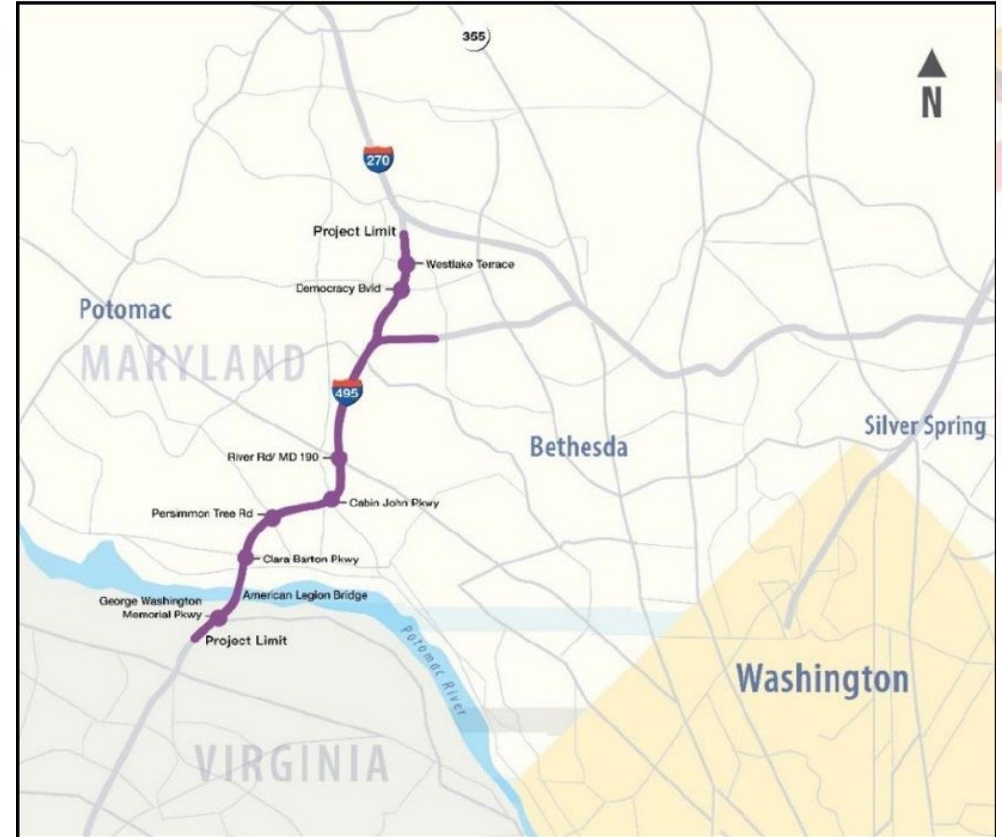
REPLACEMENT OF THE AMERICAN LEGION BRIDGE

- System preservation need - the bridge originally opened in 1962 and is nearing end of lifecycle
- Bridge is anticipated to drop into poor condition unless preservation needs are addressed
- The American Legion Bridge can no longer accommodate daily traffic levels
- New bridge will support fast, efficient transit and accessible, active transportation options



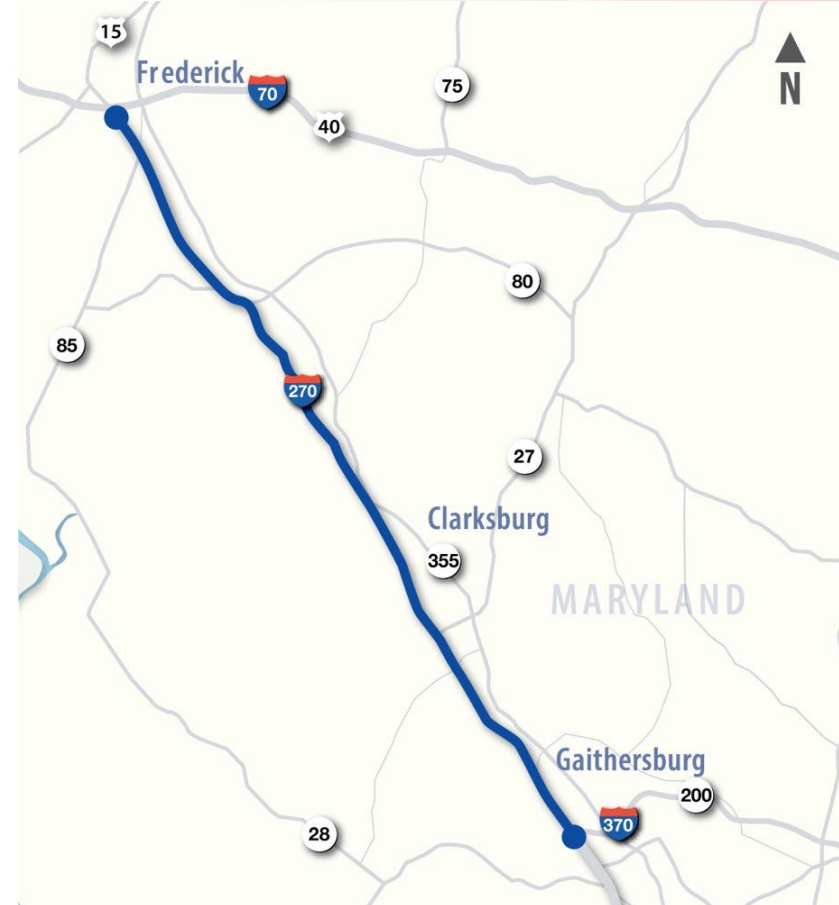
PHASE APPROACH TO MANAGED LANES

- Initial phase will support:
 - Reliable transit and high-occupancy vehicle connectivity between Bethesda and Tysons
 - Active transportation connections including 3 miles of shared-use paths, 2 miles of bike lanes, and 3 miles of sidewalk
 - Safety by upgrading interchanges and modernizing for complete streets
 - State of good repair by replacing 16 existing bridges, improving pavement of existing roads and ramps, and upgrading drainage and stormwater management
 - Sound mitigation with 5 miles of new or extended sound barriers and 4 miles of upgraded sound barriers
- No timeline for later phases



I-270 NORTH STUDY

- Comprehensive look at transportation needs and opportunities in the corridor along I-270 between Intercounty Connector/I-370 and Frederick
- Study will consider a range of equitable and environmentally sensitive transportation solutions including transit and transportation demand management options
- Will consider options for near-term, mid-term, and long-term implementation.
- Activities will initiate in early-2024 focused on stakeholder engagement and identifying needs and existing conditions of the corridor



NEXT STEPS

- Program Development
 - Identify near-term and mid-term projects to provide travel improvements in corridor
 - Continue to develop design for American Legion Bridge and I-270 West Spur
 - Initiate I-270 North Study to assess needs and opportunities in the corridor
- Identify Funding
 - Federal grant applications submitted for American Legion Bridge and I-270 West Spur, awaiting responses
 - Continue to assess public funding opportunities for implementation of projects under the program
- Public Engagement
 - Reviewing feedback from open house engagements
 - Scheduling meetings community groups, adjacent communities, and stakeholders to understand needs
 - Continue dialogue with roadway users, communities, elected officials and government agencies



**AMERICAN LEGION
BRIDGE
+ 270**