

COG WINTER WEATHER MEETING

ASSETS

- 28 Maintenance Shops in 7 Districts
- 17,417 Lane Miles
- 5,212 Centerline Miles
- 37.1 Billion Annual Vehicle Miles of Travel
- Annual Average Daily Traffic
 - 50,000+: 3,048 Lane Miles (17%)
 - 10,000-49,999: 7,484 Lane Miles (43%)
 - <9,999: 6,885 Lane Miles (40%)

RESOURCES

- ~1,100 Maintenance Shop Employees
 - ~760 Field Employees (173 hired in the past year)
 - ~110 Managers
 - ~190 Administrative Staff and Mechanics
 - ~40 Winter Volunteers
- ~600 MDOT SHA Dump Trucks
- ~2,500 Hired Equipment Contractors
- \$68 Million Winter Budget

SNOW FIGHTING MATERIALS

Rock Salt

- 87 salt storage facilities across the state
- ~390,000 tons of salt available
- Used as a deicer during active frozen precipitation
- Most used chemical for snow fighting
- Effective on pavement temperatures of 20° F

Salt Brine

- 15 brine making facilities across the state
- 176 storage tanks across the state
- ~1.5 million gallons of salt brine storage
- Used for anti-icing prior to winter events
- Used as a deicer during active winter precipitation and on hard pack
- Effective on pavement temperatures of -6° F

Liquid Magnesium Chloride

- 16 sites across the state
- ~100,000 gallons
- Effective on pavement temperatures of -26° F

SNOW FIGHTING EQUIPMENT

SALT BRINE APPLICATOR TRUCK



- 23 units across the state
- 1,800 to 2,600 gallons of brine application capacity

DUMP TRUCK WITH BUTTERFLY AND WING PLOW



- 310 units across the state
- 14 feet of clearing width for interstates and wide roadway sections

DUMP TRUCK WITH DUAL WING PLOW



- 4 units in Garrett, Allegany, Frederick, and Montgomery Counties
- 18 feet of clearing width for interstates and wide roadway sections

TOW PLOW



- 2 units in Western Maryland
- 22 feet of clearing width for interstates

OSH KOSH



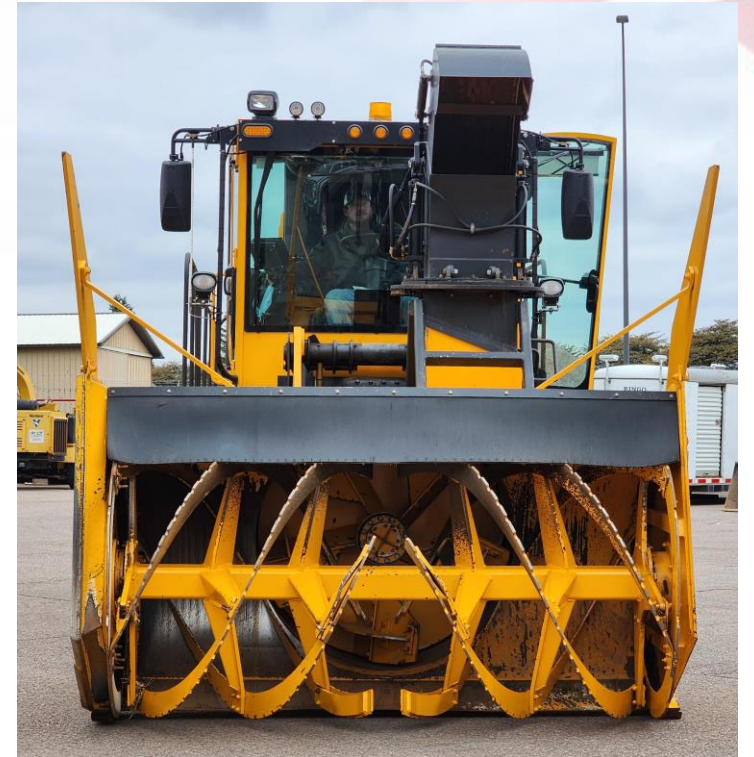
- 7 units in Frederick, Washington, Allegany, and Garrett Counties available for deployment statewide
- Allows us to operate in extreme conditions due to four-wheel drive



SNOW BLOWER



- 2 units in Garrett County available for deployment statewide
- 3,500 tons of snow removal capacity per hour



LOADER-MOUNTED BLOWER



- 4 units in Montgomery, Frederick, Allegany, and Garrett Counties available for deployment statewide
- 2,000 tons of snow removal capacity per hour

GREEN LIGHTS

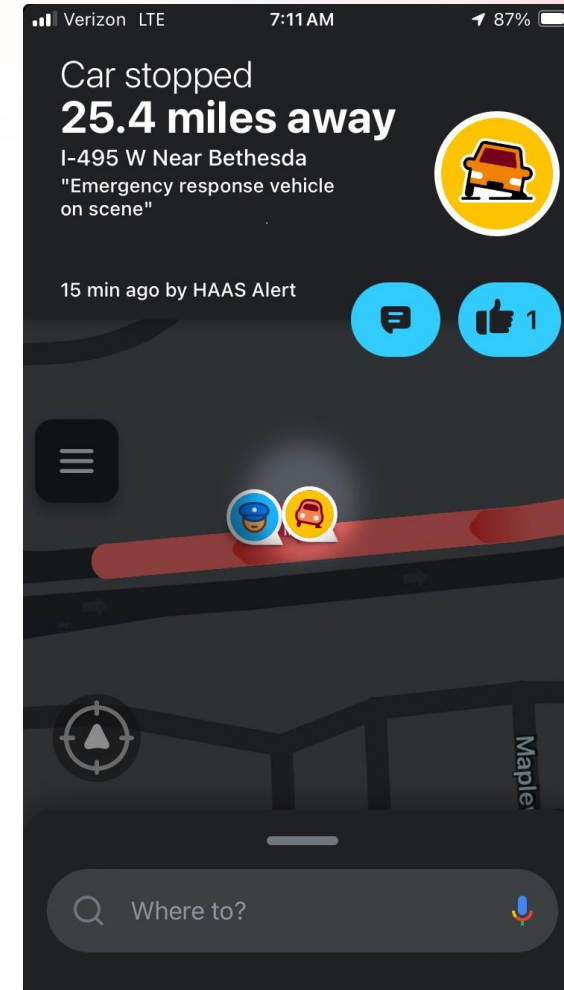


- House Bill 1150 passed October 2022 allowing the use of green lights on snow fighting equipment



HAAS ALERTS

- ~250 units
 - CHART vehicles
 - Team Leader trucks
 - Protection vehicles
- Vehicle onsite
 - Work zone
 - Accident
 - Disabled vehicle



AVL

Winter

- Materials spread
- Route completion
 - Route decay
- MARWIS integration?
- Loader scale data?

Fleet Management

- “Check Engine Light”
- Fueling reports
- Usage reports
- Vehicle idling
- Accident reconstruction
- Pre/post-trip inspection?
- Vehicle emissions compliance?

ONLINE TRAVELER INFORMATION FOR 25 YEARS

Baltimore County: I-695 INNER LOOP PRIOR TO EXIT 43 MD 157 PENINSULA EXPWY (SB) MM 44.1-46.0					
Type	Incident (Emergency Roadwork)				
Location	Baltimore County [I-695 INNER LOOP PRIOR TO EXIT 43 MD 157 PENINSULA EXPWY (SB) MM 44.1-46.0]				
Direction	Inner Loop				
Details	1 of 1 Inner Loop Shoulders Closed 1 of 2 Inner Loop Traffic Lanes Closed All Outer Loop Lanes Open Created: 05/17/2020 10:08 PM by AOC Central				
Lane Configuration Data	<table border="1"><thead><tr><th>Inner Loop</th><th>Outer Loop</th></tr></thead><tbody><tr><td></td><td></td></tr></tbody></table>	Inner Loop	Outer Loop		
Inner Loop	Outer Loop				

Traffic Incidents and Events

View reported traffic incidents, weather road closures, active construction and maintenance closures information

SEE MORE



Live Cameras

View the live traffic cameras from different locations around the state of Maryland

SEE MORE



Interactive Mapping

View live Maryland roadway conditions through our Interactive GIS Mapping Application.

SEE MORE



Local Weather Stations

View current weather data from CHART System Weather Stations

SEE MORE



Speed Sensor Data

View current traffic speeds from CHART system Speed Sensors.

SEE MORE

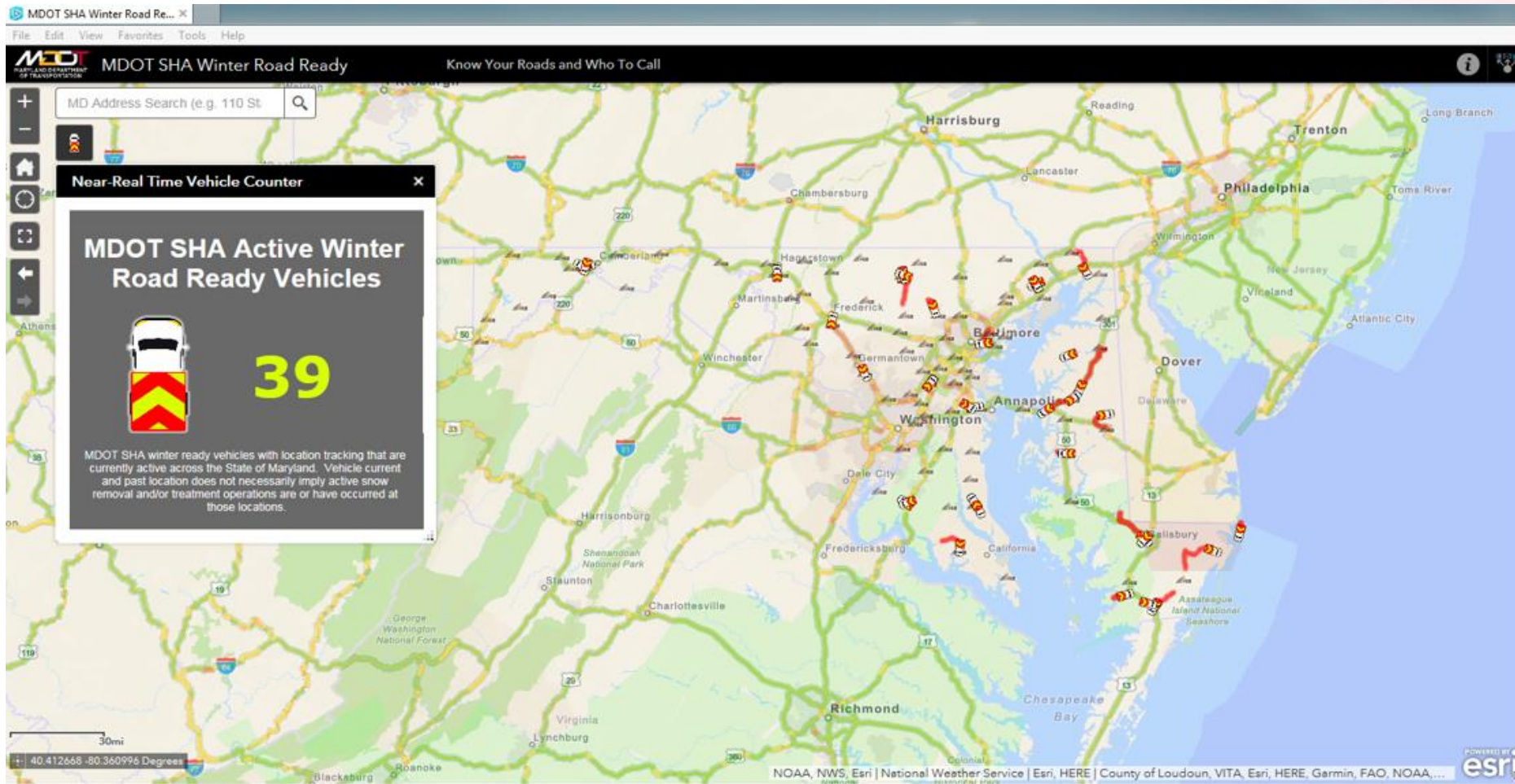


Highway Message Signs

View current highway advisory messages from CHART dynamic message signs.

SEE MORE

S.T.O.R.M. – PUBLIC





QUESTIONS?

DC AREA MANAGEMENT – MDOT SHA

Montgomery County

- Charles Hynson, ADE-M
 - 301.513.7304
- Kola Fadairo, RME Gaithersburg
 - 301.948.2477
- Sidney Proctor, RME Fairland
 - 301.572.5166

Prince George's County

- Justin Sosebee, ADE-M
 - 301.513.7320
- Rick Shagogue, RME Laurel
 - 301.776.7619
- Ernie Johnson, RME Marlboro
 - 301.952.0555

TERRY (WIL) CLARK

Office of Maintenance

Deputy Director, Operations

443.829.5258

TClark3@mdot.maryland.gov