



Metropolitan Washington Council of Governments Annual Winter Weather Briefing



Washington Metropolitan Area Transit Authority

November 6, 2017



Severe Weather Plan

- **Winter Storms Season**
 - Snow
 - Ice
- **Tropical Storms Season**
 - Hurricanes
 - Winds
 - Flooding
 - Severe Thunderstorms
- **Heat Season**
 - Rail Kinks
 - Air Quality
- **Severe Storms**
 - Power Outages
 - Flooding





Severe Weather Teams

- **Severe Weather Commanders:**
 - Joseph Leader
 - Metrorail: Andrew Off
 - Metrobus: Rob Potts
- **Director of the Office of Emergency Management:**
 - Ron Bodmer
 - OEM Liaisons
- **Emergency Operations Center Teams:**
 - Representatives from different departments
 - Red Team is a standing day shift
 - Blue Team is a standing night shift





Severe Weather Notifications



- **Office of Emergency Management Liaison:**
 - Tracks weather forecasts, conditions and projections 24 hours a day, 365 days a year
 - Notifies Emergency Operations Center Teams concerning decisions related to the weather conditions and the activation of the Emergency Operations Center (EOC)
 - Continues to track weather conditions and provide updates on the forecast a minimum of every 4 hours
 - Represents WMATA on the MATOC Severe Weather Coordination Working Group





Severe Weather Phases



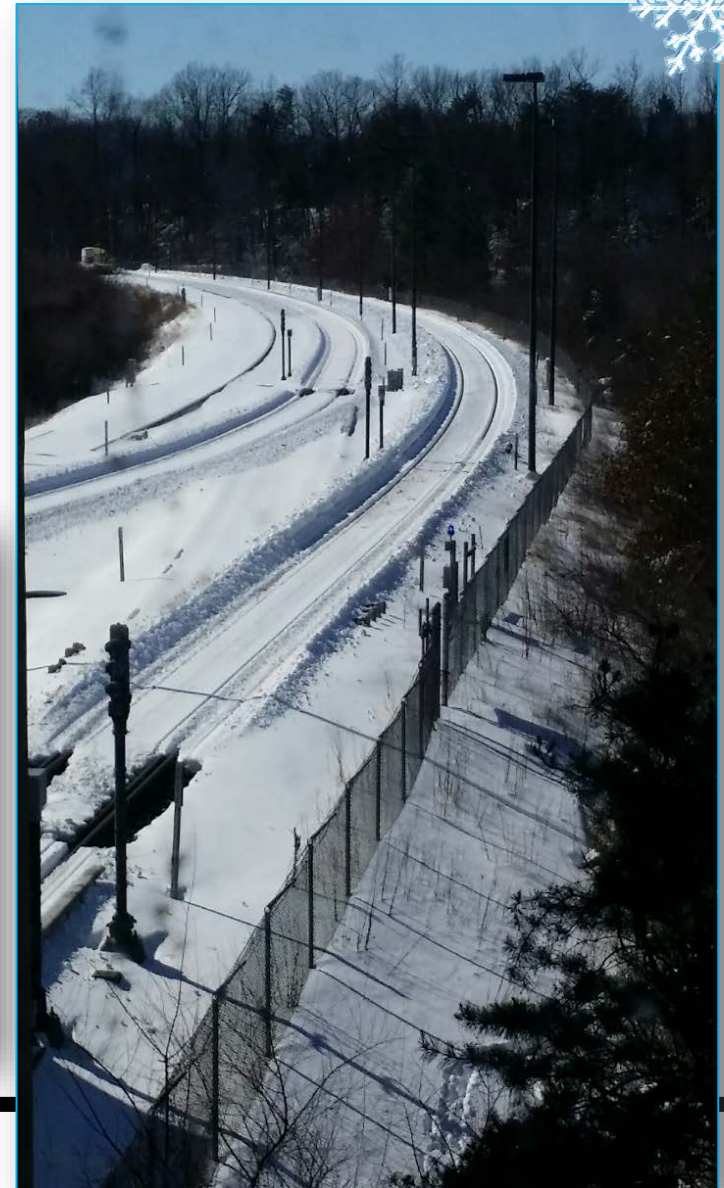
- **Alert:**
 - Monitor weather forecasts, operations throughout service area, issue weather advisories.
- **Readiness:**
 - Mobilization of resources to include deployment to pre-designated locations.
- **Operations:**
 - Activities required to fight a storm until normal operations are restored.
- **Recovery:**
 - Redirect personnel to provide and restore regular service to Metrorail, Metrobus and MetroAccess.



Winter Weather Readiness/Operations

- **Levels:**

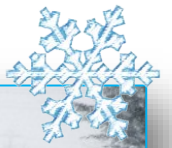
- Level 1 (0-2")
- Level 2 (2-4")
- Level 3 (4-8")
- Level 4 (8"+)





Level 1

- **Weather Conditions:**
 - 0” to 2” of snow or light collection of snow on surfaces



Metrorail Service

Normal service schedule.

Metrobus Service

Normal schedule operating as roads and traffic permits.

MetroAccess Service

Normal schedule operating as roads and traffic permits.



Level 2

- **Weather Conditions:**
 - 2” to 4” of snow

Metrorail Service

Adjusted service schedule with longer headways.

Metrobus Service

Service suspended on many routes. Operating routes on snow detours.

MetroAccess Service

Normal schedule operating as roads and traffic permit. Outbound trips may be curtailed.





Level 3

- **Weather Conditions:**
 - 4” to 8” of snow



Metrorail Service

Limited service schedule with longer headways.

Metrobus Service

Service suspended on all but the busiest routes. Operating routes on snow detours.

MetroAccess Service

Non-essential trips are canceled.



Level 4

- **Weather Conditions:**
 - 8” + of snow

Metrorail Service

No service or limited underground service.

Metrobus Service

Provide at least one hour notice before service suspension.

MetroAccess Service

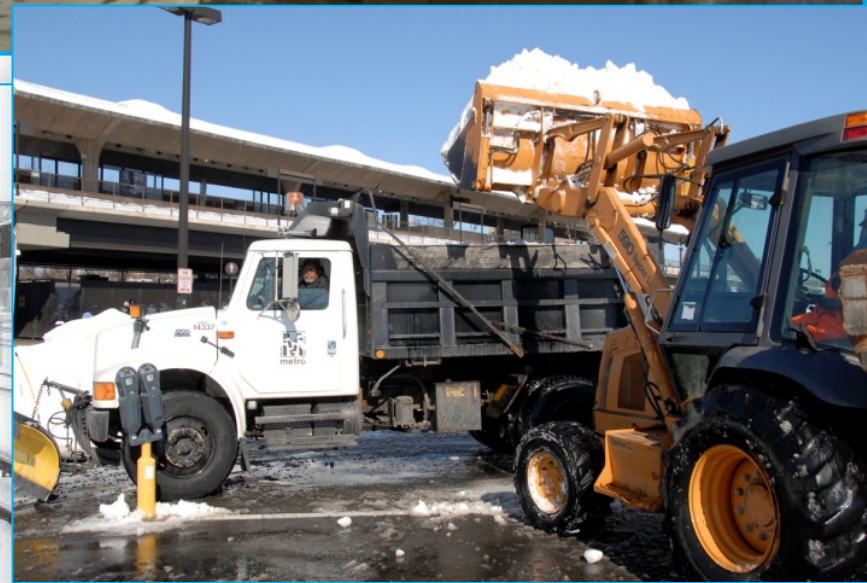
Suspension of service.





Recovery

- **Weather Conditions:**
 - As tracks and roads are cleared, Metro will reestablished service based on improved surface conditions





Questions

