

MARC Service to Delaware and Virginia April 2021 Briefing



Figure 1: Map of the Mid-Atlantic Megaregion and Commuter Rail Lines

OVERVIEW OF PROJECTS IN HB1236

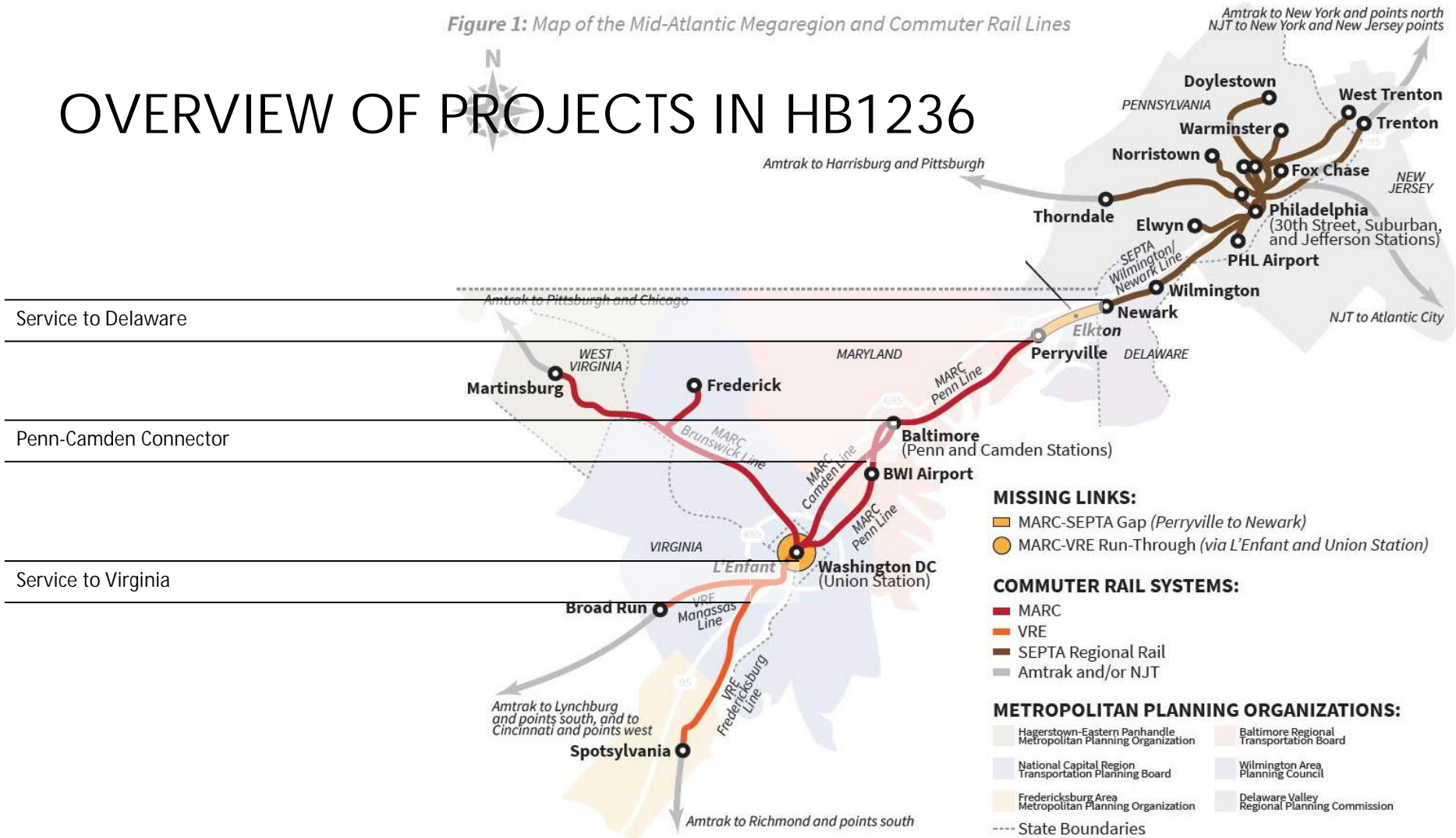


Figure 1: Map of the Mid-Atlantic Megaregion and Commuter Rail Lines

OVERVIEW OF PROJECTS IN HB1236

<p>Service to Delaware</p>	<p>Extending MARC service from Perryville, MD to meet SEPTA service in Newark, DE</p> <ul style="list-style-type: none"> • Service to Perryville Today: bi-directional, one midday trip, no weekend service • Service to Newark Today: bi-directional, no midday or weekend service • Proposed Pilot Service: 2 AM and 2 PM Trains from Perryville to Newark
<p>Penn-Camden Connector</p>	<p>Connecting the MARC Camden and Penn Lines via CSX Tracks</p> <ul style="list-style-type: none"> • Direct access between the Camden and Penn Lines • Access from both lines to Riverside Heavy Maintenance Yard • Address Pen Line train storage challenges
<p>Service to Virginia</p>	<p>Extending MARC service from Union Station in DC to Alexandria, VA</p> <ul style="list-style-type: none"> • All MARC Lines Serve Union Station: <ul style="list-style-type: none"> • Penn and Camden Lines from Baltimore • Brunswick Line from Frederick, MD and West Virginia • Proposed Pilot Service: 2 AM and 2 PM Trains into Alexandria, VA

