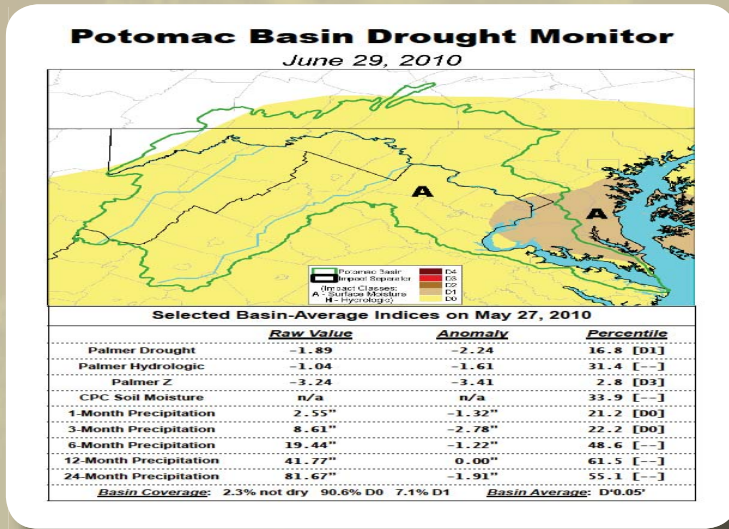
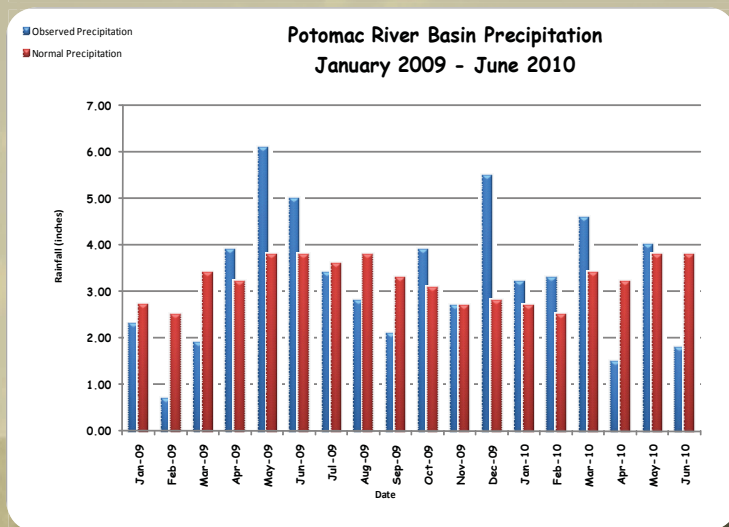


Washington Metropolitan Region Drought and Water Supply Status and Outlook - July 2010

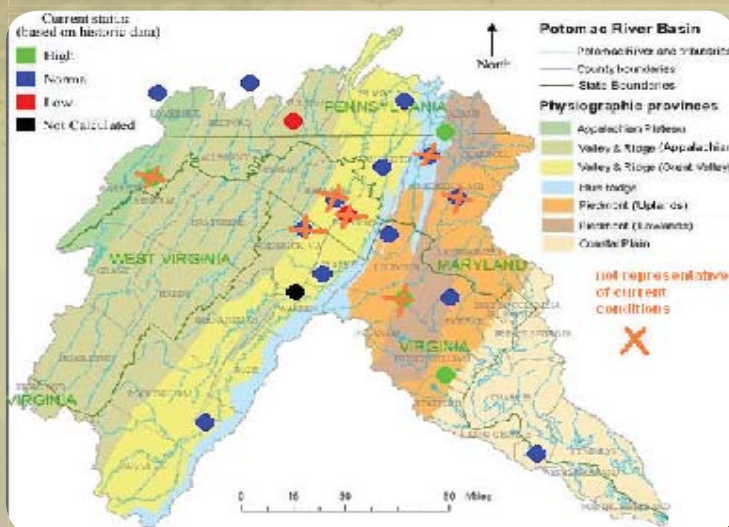
Metropolitan Washington Water Supply and Drought Awareness Response Plan - Drought Stage NORMAL



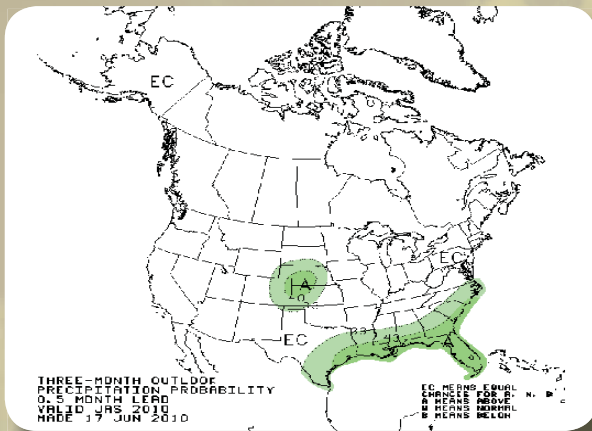
POTOMAC BASIN DROUGHT MONITOR
Abnormally Dry (D0) with a few areas of Moderate Dryness (Level D1) in southern and central Maryland. Despite scattered moderate rainfall, a hot and generally dry month allowed for rapid drying in many areas. The Drought Monitor released on July 2, 2010 indicates that most of our region is abnormally dry (D0 level). Moderate drought (D1 level) was introduced last week in the southern and central portions of Maryland. Regional experts will continue to monitor conditions and provide additional updates as needed. Source: NOAA



POTOMAC BASIN PRECIPITATION DATA June 2010 - Below Normal
June typically is a wet month for our region yet we experienced below normal precipitation in 2010 - we were below normal by 2.0 inches. Since January 2010 our region has received 18.40 inches of rain, 0.8 inches below normal for the year. Source: Middle Atlantic River Forecast Center



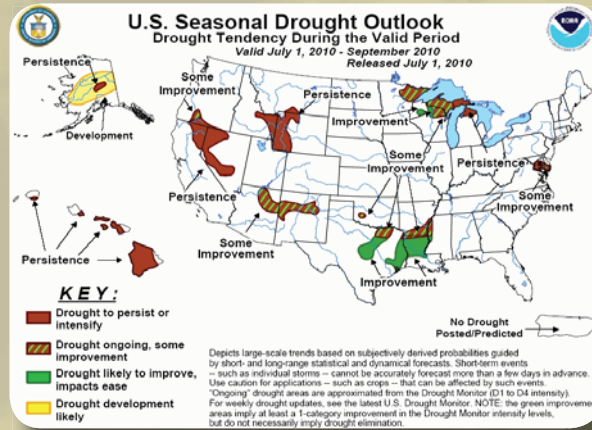
GROUNDWATER STATUS
July 1, 2010 - Normal. As of July 1, 2010 most of the groundwater wells report normal levels throughout the Potomac River Basin. (a difference from the high to normal levels reported last month). One well in Pennsylvania is now reporting a low level. Wells in Jefferson County, West Virginia, Jef-0526, and Warren County, Virginia, 45V3, as well as those marked with an X do not represent current conditions. We will provide updated data as soon as it becomes available. Source: USGS and ICRPB



THREE MONTH PRECIPITATION OUTLOOK

The Climate Prediction Center of the National Weather Service produces three month precipitation forecasts for the United States. According to the July-August-September Outlook, our region has an equal chance (EC) of above average or below average precipitation.

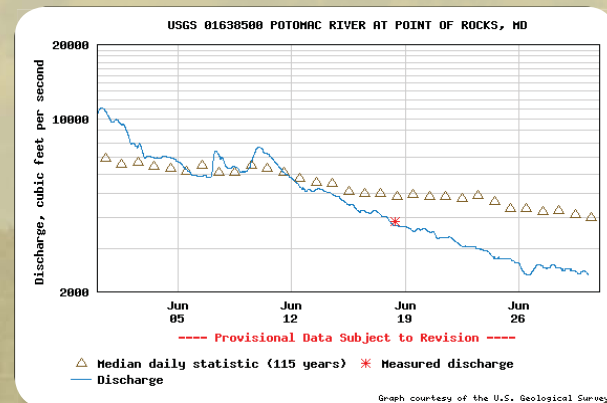
Source: NWS - Climate Prediction Center



SEASONAL DROUGHT OUTLOOK July 2010

The seasonal drought outlook released on July 1, 2010 indicates that in the lower portions of our region drought conditions will persist or intensify between now and September.

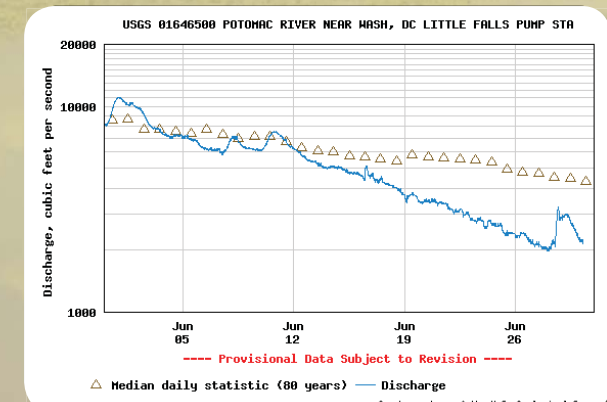
Source: NWS - Climate Prediction Center



POTOMAC RIVER FLOW POINT OF ROCKS and LITTLE FALLS Below Median

Streamflow levels have been declining since the beginning of June and remain below median levels as of June 30th. Streamflow levels at Point of Rocks and Little Falls were below the median by 1,660 and 2,180 cfs, respectively.

Source: USGS



RESERVOIR STATUS July 2010 - Above Normal Probability of Releases

The probability of releases this summer and fall from the Washington metropolitan area's back-up water supply reservoirs is above normal. With abnormally high temperatures and little chance for precipitation in the near term, the basin is becoming increasingly susceptible to drought conditions. But for now, from a water supply perspective, there is sufficient water in the Potomac River to meet Washington metropolitan area demands, and the upstream reservoirs are near-full to full. There is a 20 to 27 percent conditional probability that Potomac flow will drop below 600 to 700 million gallons per day (MGD) at Little Falls through December 31 of this year; at these flow levels, water supply releases from Jennings Randolph and Little Seneca Reservoirs may occur. Jennings Randolph Reservoir is 100% full at this time.

NCRWARN - National Capital Region Water/ Wastewater Response Network

COG will be posting all drought related information on the NCRWARN website. NCRWARN is a network of utilities in the National Capital Region who have voluntarily agreed to help other utilities prepare for the next natural or human-caused emergency. You can access the website at the following web address www.ncrwarn.org

For additional information about this report contact Christine Howard at choward@mwkog.org 202.9562.3366