

# NATIONAL CAPITAL TRAIL NETWORK

---

Andrew Meese  
Program Director, Systems Performance Planning  
COG Department of Transportation Planning

Region Forward Coalition  
April 26, 2024

# What Is the NCTN?

- Transportation Planning Board-envisioned long-distance, continuous network of low-stress, mostly off-road bicycle and pedestrian facilities
- Accessible for all ages and abilities
- Healthy, low-stress access to open space
- Clean, inexpensive, reliable transportation
- Serves nearly all TPB priority areas, and most people and jobs



Virginia Avenue S.E.  
Photo: Michael Farrell, COG.

# Timeline



Bicycle accommodations on the new Frederick Douglass Bridge (completed 2022) comprise a portion of the NCTN. Source: DDOT.

- 2018 – TPB directed staff to create a regional trail network that would extend into all TPB jurisdictions
- 2020 – TPB adopted the first National Capital Trail Network map
  - Priority asked to be given to NCTN projects in TPB’s Transportation-Land Use Connections (TLC) and Transportation Alternatives (TA) funds
- 2023/2024 – an expanded NCTN, map, and supporting database were created and approved

# Progress Towards Completion 2020-2023

NCTN	Miles 2023	Miles 2020	Difference
Existing	752	644	+108
Planned	797	778	+19
Total	1,549	1,422	+127
Completed Since 2020	83*		

**83 Miles Completed Since 2020**

- 83 miles of the National Capital Trail Network have been completed since 2020, a rate of approximately 27 miles per year\*
  - \*Based on projects that transitioned from planned to existing from 2020 to 2023
- 2020 – 45% existing, 55% planned (by mileage)
- 2023 – 49% existing, 51% planned
  - At the current rate, it would take about 30 years to complete the NCTN

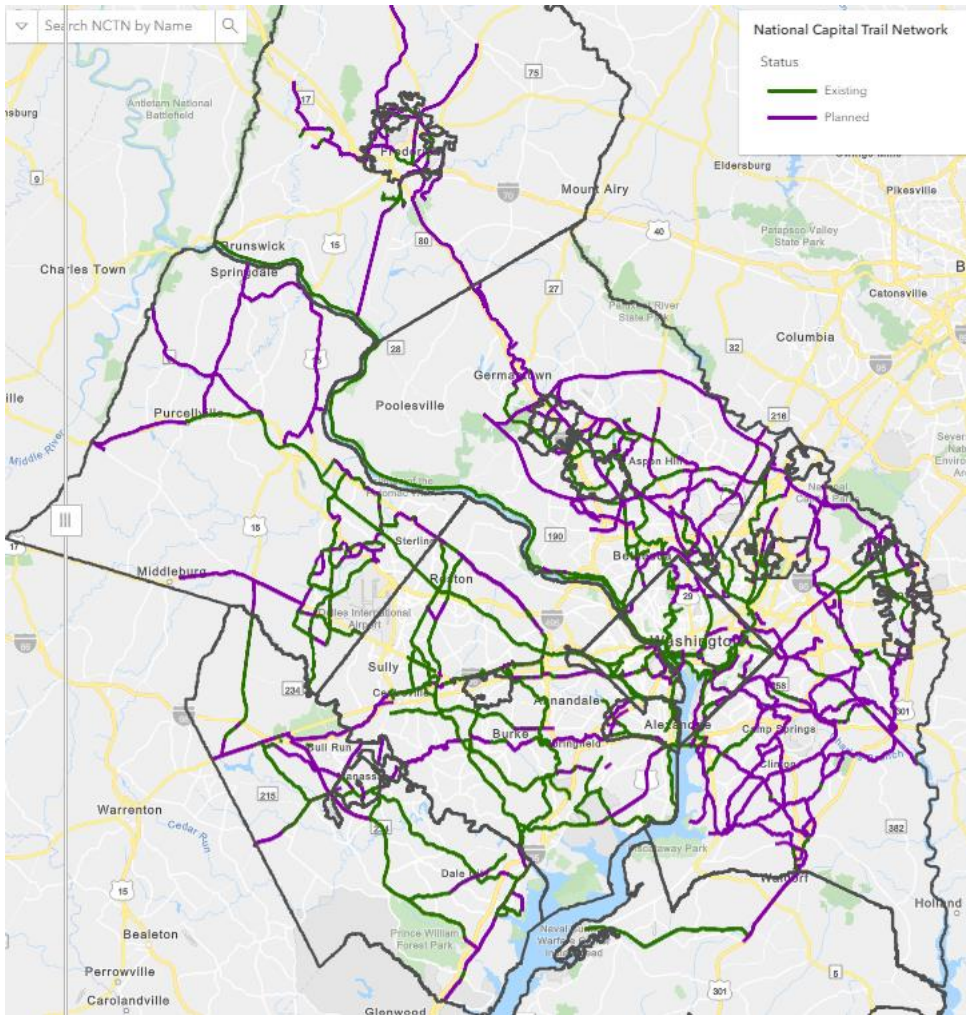
# Priority Areas, Population & Employment Served

Within 1/2 Mile of the NCTN	Areas within 1/2 Mile vs. Regional Totals	Percent
Equity Emphasis Areas	334/364	92%
Regional Activity Centers	136/140	97%
High-Capacity Transit Areas	210/225	93%
Transit Access Focus Areas	48/49	98%

Within 1/2 Mile of the NCTN*	Percent
2020 Population	63%
2020 Employment	72%
2030 Population	64%
2030 Employment	72%









\*COG Cooperative Forecast Round 10. Source: COG.

# National Capital Trail Network Map & Web Page



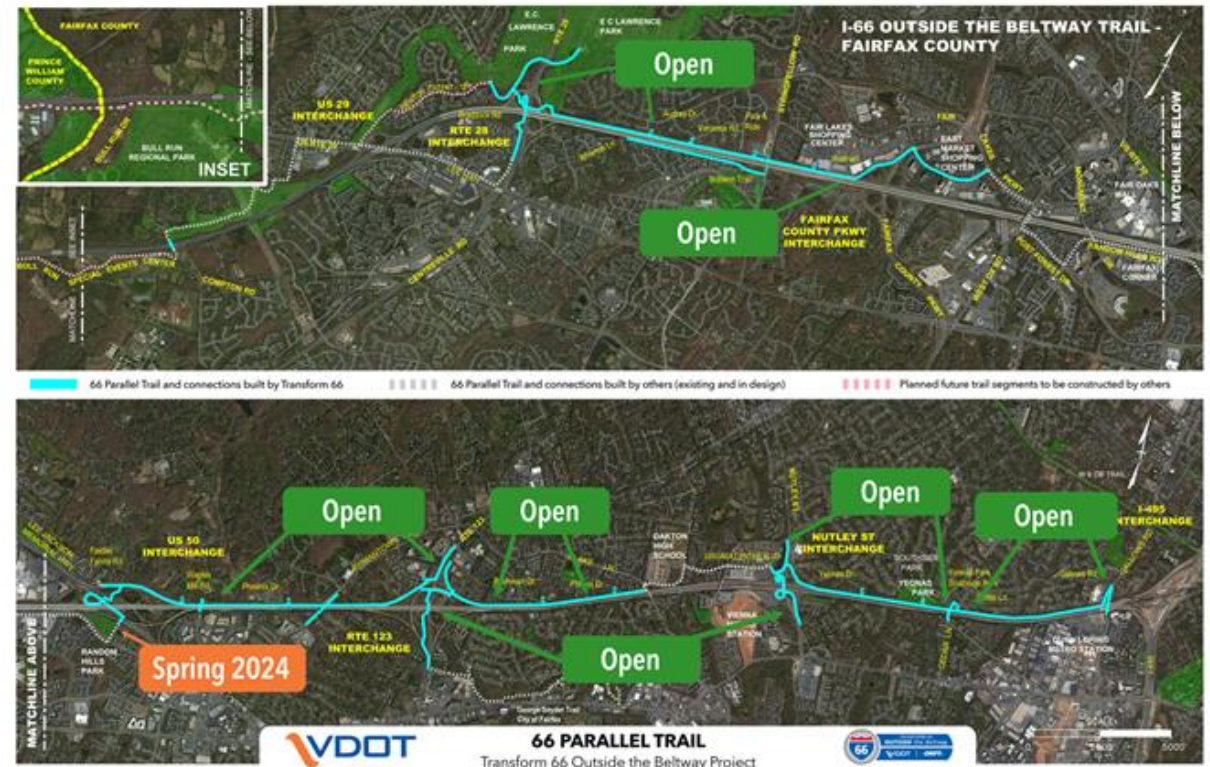
<https://www.mwcog.org/maps/map-listing/national-capital-trail-network/>

Serving Regional Goals

 <p><u>TPB Vision</u></p> <p>"...safer, more accessible, and less intimidating for pedestrians [and] bicyclists..."</p>	 <p><u>Visualize 2045</u></p> <p>"Making it easier to walk, bike, and take transit reduces emissions and helps communities thrive."</p>	 <p><u>Aspirational Initiatives</u></p> <p>"...improve walk and bike access to transit...complete the National Capital Trail Network..."</p>	 <p><u>Region Forward</u></p> <p>"...prioritize walking and biking options by improving pedestrian and bicycle networks..."</p>
<p>High-Capacity Transit (HCT) Station Areas</p>  <p><b>93%</b></p> <p>210 of 225</p>	<p>Transit Access Focus Areas (TAFA)</p>  <p><b>98%</b></p> <p>48 of 49</p>		
<p>Equity Emphasis Areas (EEA)</p>  <p><b>92%</b></p> <p>334 of 364</p>	<p>Regional Activity Centers</p>  <p><b>97%</b></p> <p>136 of 140</p>		

# Outlook

- The National Capital Trail Network provides a regional vision for interjurisdictional connectivity for bicycling
- As of 2023, the NCTN was approximately 49% complete
- The TPB has expressed a desire to increase the rate of completion of the NCTN
- Member agencies and jurisdictions can use the NCTN as a framework to build toward interconnectivity



The 66 Parallel Trail is a portion of the NCTN. Source: VDOT



Connection of the College Park Woods Trail and Paint Branch Trail, College Park.  
Photo: Michael Jackson, Maryland-National Capital Park and Planning Commission.

## Andrew Meese

Program Director, Systems Performance Planning  
(202) 962-3789  
ameese@mwcog.org

[mwcog.org](http://mwcog.org)

---

777 North Capitol Street NE, Suite 300  
Washington, DC 20002