



**Loudoun County
Department of General Services**

Business Recycling in Loudoun County

Business Recycling in Loudoun County

Loudoun County has 3 ordinances addressing recycling requirements for businesses in Loudoun County

- Chapter 1084 “Solid Waste Collection & Transportation” – requires an annual permit for businesses that collect and transport recyclable materials that are generated in Loudoun County.
- Collectors classified as Major must provide recycling services for their customers.



Business Recycling in Loudoun County

Loudoun County has 3 ordinances addressing recycling requirements for businesses in Loudoun County

- ▶ Chapter 1086 “Solid Waste Reduction and Recycling”– requires businesses located in Loudoun County to recycle one PRM. If multiple businesses share a contract and container for solid waste; the PRM to be recycled is based on the number one PRM generated by all the businesses.



Business Recycling in Loudoun County

Loudoun County has 3 ordinances addressing recycling requirements for businesses in Loudoun County

- ▶ Chapter 1088 “Litter Prevention and Control”- requires owners, agent, occupant, or lessee of property in Loudoun County, keep his/her property free of litter.





Business Recycling in Loudoun County

Business Recycling: Promotion and Resources

- 1. Green Business Challenge**
- 2. Outreach and Education**
- 3. Permitted Collectors**
- 4. Customer Awareness/Requests....and complaints**

Business Recycling in Loudoun County

Green Business Challenge



Business Recycling in Loudoun County

Green Business Challenge Scorecard

	Participant	Certification	Silver	Gold	Platinum		
	1 - 44	45 - 59	60 - 74	75 - 89	90 - 100		
Energy Efficiency -							
Every office product purchased in the U.S. this year was ENERGY STAR qualified, Americans would save \$200 million in annual energy costs while preventing almost 1 billion pounds of greenhouse gases. Source: ENERGY STAR							
	Action Item	Required Points	Points Earned				
1	Turn off your computer, printer, monitor and task lights when you leave the office. This includes unplugging power strips at the end of the day because they consume energy even when the equipment is shut off	1					
2	Reduce the time delay before your computer equipment reverts to a power saving mode. This can also be set in the Power Options menu in your PC's Control Panel	1					
3	Unplug chargers, fans or any items not regularly used as they use energy even when turned off but still plugged in.	1					
4	Benchmark your buildings with EPA portfolio Manager or any other equivalent benchmarking tools	1					
5	Install individual lighting controls to provide an opportunity for reduced lighting use.	1					
6	Label light switches/controls with reminders to "Please turn off lights" when not in use	1					
7	Place equipment such as copy machines well away from the location of area thermostats and similar heat producing equipment as it can raise ambient temperature reference for the thermostats, and thereby have the thermostat react to that temperature and excessively cool the staff	1					
8	Angle all mini-blinds "up" at a 45 degree angle to prevent the sun's radiant heat load from being transferred into the space. On sunny days the building's glass temperature can easily reach temperatures in excess of 100 degrees in some climates	1					
9	Have thermostat set back policy: winter 68 degrees, summer 78 degrees. When office closed: winter 55 degrees, summer 85 degrees.	1					
10	Set water heater temperature to 120 degrees or lower	1					
11	Set sleep modes for copiers, printers and other peripherals to deactivate when not in use	1					

20 questions specific to recycling and waste management. Such as ...

Business Recycling in Loudoun County

Green Business Challenge Scorecard

Recycling and Waste Reduction

Invite a professional from the Loudoun County Department of Construction & Waste Management to talk to staff about recycling in the workplace. Provide a copy of your recycling work plan to DCWM staff for review and comments. (1 pt)

Have your business/recycling team/recycling coordinator conduct a waste stream audit to determine your waste stream profile. Establish ways to increase recycling and reduce overall waste as well as a waste reduction goal that is right for your business after completing your waste stream audit. (2 pts)

Create signs promoting your recycling program and identify what materials are collected for recycling. Locate recycling receptacles for convenience and accessibility throughout the workplace. Paper recycling trays or bins at every employees work space. Place a container for the collection of plastic or glass bottles/cans in the food prep or eating area. (2 pts)

Consult with your solid waste collector to identify what recyclable materials they will pick up from your business. Your solid waste collector is required to provide written guidelines identifying what materials they will collect, how they should be separated, packaged and set-out for collection. (1 pt)

Business Recycling in Loudoun County


Outreach and Education

- Green Business Challenge
- Requested presentations
- Website

**It's Time to Recycle –
At Your Office or Business!**

Viasystems in Sterling, Virginia

Provided by the Loudoun County
Department of General Services
July 10, 2013

A graphic featuring a blue and green globe with a recycling symbol (three chasing arrows) overlaid on it. The globe shows the Americas.

Business Recycling in Loudoun County

Loudoun County VIRGINIA
WHERE TRADITION MEETS INNOVATION

Search

Site Tools »

- A-Z Local Recycling Resources »
- Business Recycling »
- Christmas Tree Recycling »
- Electronics Recycling »
- Paper Shredding/Document Destruction Services »
- Plastic Bag Recycling »
- Recycling Bin Loan Program »
- Recycling Centers and Materials Accepted »
- Recycling Collection Services »
- Waste Donation Opportunities »
- Resources »

VOLUNTEER/CONNECT

LOUDOUN ON

- Facebook
- Twitter
- YouTube
- RSS

EMAIL UPDATES

Mobile

GOVERNMENT SERVICES BUSINESS HOW DO I... ABOUT LOUDOUN

Home > Government > County Departments > Departments H-Z > Waste Management > Recycling > Business Recycling

Business Recycling

Loudoun County Business Community

Loudoun County has a thriving business community with companies ranging in size from small businesses to multi-billion dollar enterprises. These establishments, and the large number of people they employ, have a major impact on the amount of trash and recyclables generated in the county. A large percentage of the county's waste stream is currently generated by businesses.

For this reason, workplace or business recycling is a key component in Loudoun County's efforts to promote environmental stewardship. All businesses, large and small, can recycle and are required to recycle.

Business Recycling Resources

The Department of General Services Waste Management Division's Business Recycling Resources will assist your business in implementing a successful recycling program. The following links are provided to guide you in developing a business recycling program:

- [Directory of Permitted Solid Waste Collectors](#)
- [Steps to Starting a Recycling Program at Work](#)

More Information

For additional information or for technical assistance in implementing your business-recycling program, contact the Loudoun County Department of General Services, Waste Management Division, at 703-771-5552.

FAQs

VIEW ALL

- Are all businesses in Loudoun County required to recycle?
- What is a "PRM?"
- Who is responsible for collecting my recyclables?
- Who is responsible for collecting and transporting my recyclables if they are not white office paper, mixed paper, or cardboard?
- Who is responsible for notifying tenants and/or employees that recycling is mandatory in Loudoun County?
- What information must I provide to my tenants and/or employees when notifying them that recycling is mandatory in Loudoun County?
- Who is responsible for ensuring my employees recycle in the work place?
- What if the business recycles at a drop-off center or through a collector that is not permitted by the county?

LOUDOUN COUNTY VIRGINIA
1757

Home | Contact Us | Sitemap | Accessibility | Privacy Policy | Copyright Notices | Powered by CivicPlus



Business Recycling in Loudoun County

Permitted Collectors & Facilities

- ▶ **Major Collectors** required to provide recycling for their business and residential customers
- ▶ **Four facilities** in Loudoun County accept and process recyclable materials:
 1. Landfill
 2. Waste Management – Old Dominion
 3. Waste Management – Sterling
 4. CSI/LFF MRF

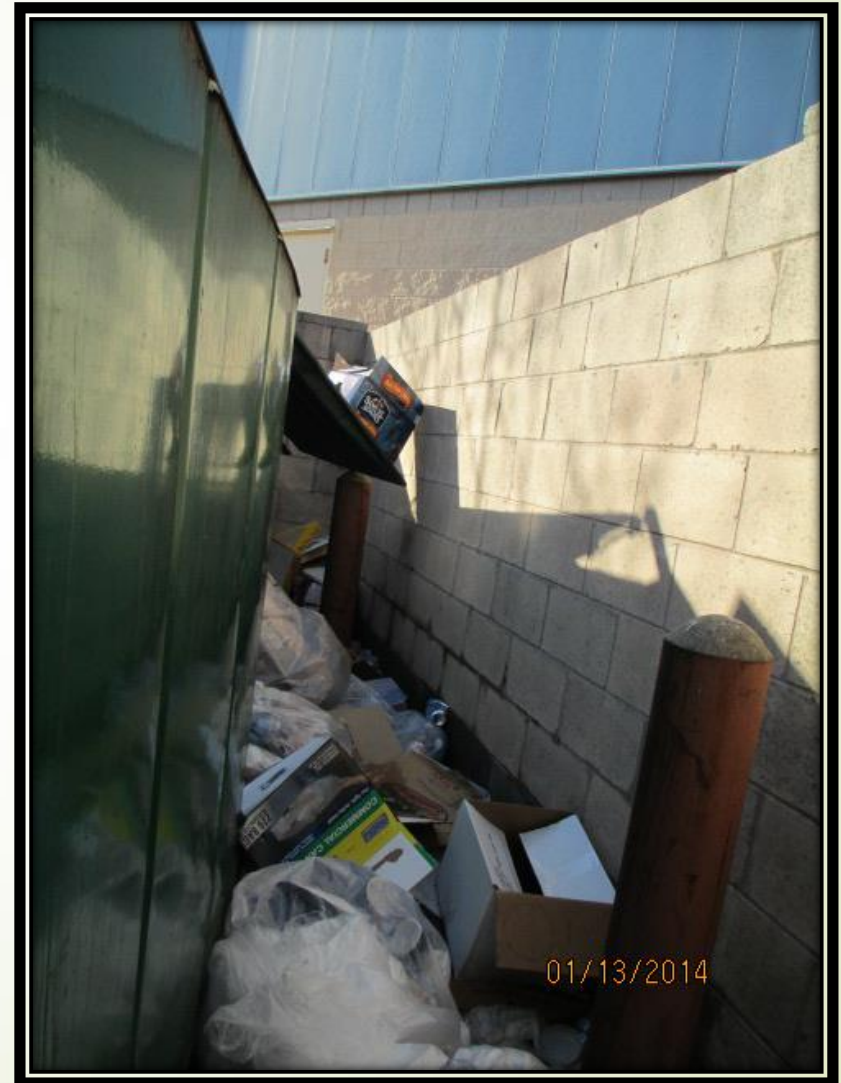


Business Recycling in Loudoun County

Recycling Complaints

- Enforcement – casual and compromise preferred
- Litter complaints results in more site visits if you will than “formal” inspections

Business Recycling in Loudoun County



Business Recycling in Loudoun County

► Complaints about Recycling for 2014 = 3

2014	Number of Complaints	Recycling at a Business
1 st Qtr. (Jan-Mar)	15	1
2 nd Qtr. (Apr-Jun)	33	0
3 rd Qtr. (Jul-Sep)	34	1
4 th Qtr. (Oct-Dec)	25	1

Business Recycling in Loudoun County

How do we measure Business Recycling?

We don't quantify or measure except when gathering information from businesses that self or backhaul their recyclables on annual basis for the recycling rate report

How could we improve Business Recycling?

1. Staff
2. Incorporate the recycling requirement in applications submitted by businesses considering operations in the county
3. Provide standard building design guidelines for recyclable material collection for new commercial construction
4. Amend existing ordinances to require more recycling and reporting by businesses
5. Develop campaign to inform all businesses of the recycling requirement and options available

Business Recycling in Loudoun County

Any Questions?

Kate Glass
Loudoun County
Department of General Services,
703-737-8769
kate.glass@loudoun.gov

