

An aerial photograph of a large lake with several islands. The water is a deep blue, and the islands are covered in dense green and yellow trees. Numerous sailboats are visible on the water, particularly in the lower right quadrant. The overall scene is peaceful and scenic.

Current Planning for 2017 Mid-Point Assessment

Gary Shenk

COG

10/4/2012

presentation credit to

Katherine Antos and the WQGIT ad hoc planning team

Big Picture Question

Where do we as a Partnership want to be in 2017 and 2025?

What is the Midpoint Assessment?

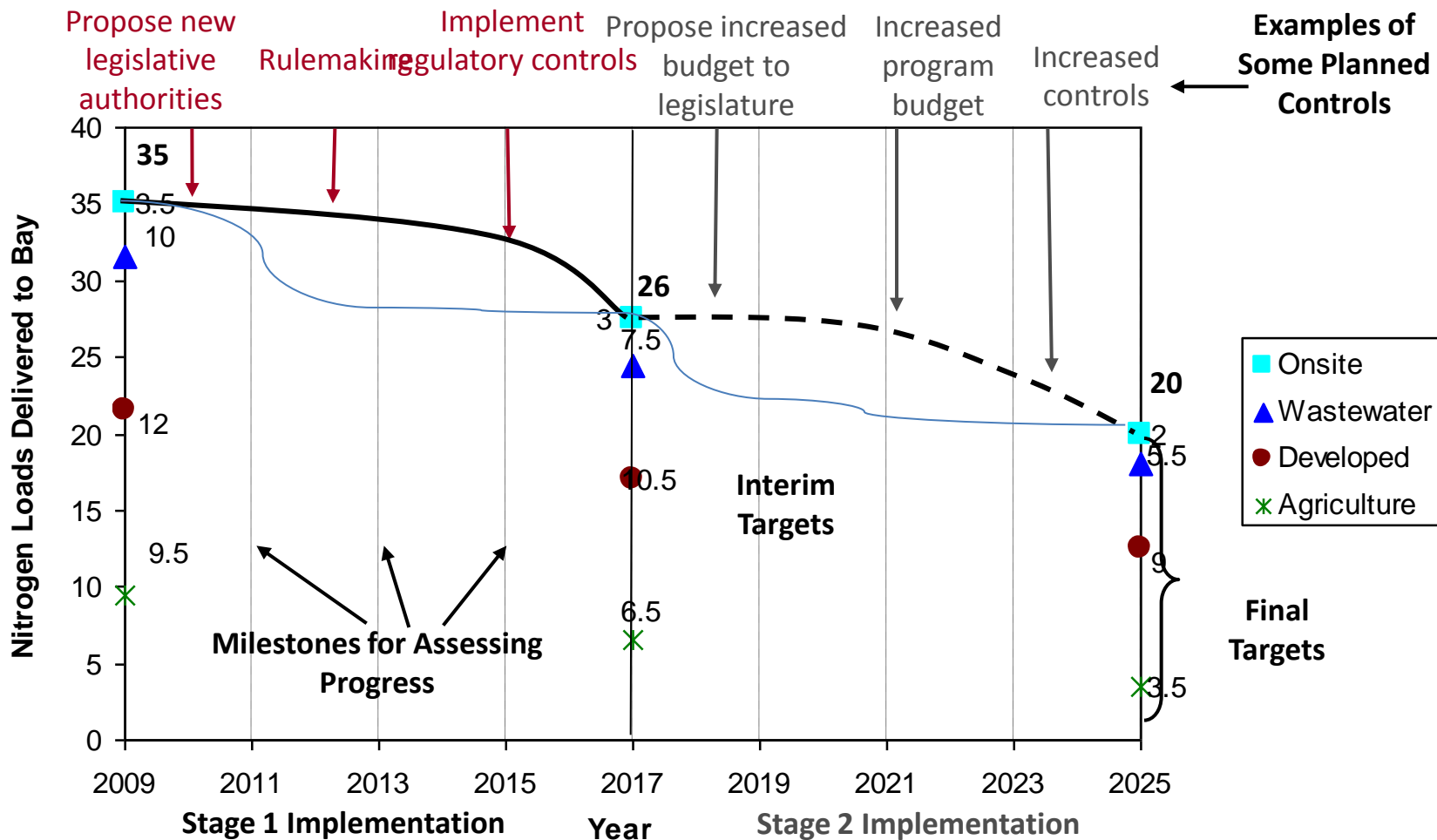
➤ Ultimate Goal:

- Ensure Partnership has all practices in place by 2025 to attain water quality standards in the Bay

➤ How?

- Take stock of latest science, data, tools (including models), BMPs, and lessons learned from progress to date
- Findings from Midpoint Assessment will help jurisdictions to prepare for the Phase III WIPs, which will guide milestones and implementation between 2018 and 2025

Staged Implementation



More Detail on 2017 Questions

- What is the midpoint assessment?
 - How does it relate to the 60% by 2017 goal?
 - How does it relate to the accountability framework from the Bay TMDL?
 - Who is the lead for the midpoint assessment and related deliverables?
 - What is the approximate schedule?
- What are the Partners' priorities for the midpoint assessment?
 - How do they relate to the Guiding Principles
 - How big of an effect
 - How tough to implement
 - Any downsides
- Guiding Principles – What are they and how will they be applied?

Working Draft of Guiding Principles

1. Keep the focus on implementation and maintain stable tracking and reporting through 2017
2. Enhance decision support and assessment tools to enable successful engagement of local partners
3. Incorporate verification of practices into existing accountability tools and reporting protocols
4. Address emerging issues that may impact current strategies and future plans
5. Prioritize midpoint assessment actions and adaptive management to ensure Phase III WIPs meet water quality goals

How Does the Midpoint Assessment Relate to the 60% goal?

Moving Forward on Parallel Tracks

2010

Implementing 60% by 2017

- 2010: Phase I WIPs
- 2011 & 2012: Phase II WIPs
- 2012-2013 Milestones
- 2014-2015 Milestones
- 2016-2017 Milestones
- Annual progress runs
- Tracked using Watershed Model **Phase 5.3.2**, with some refinements to include innovative new BMPs as possible (including from panels)

Midpoint Assessment

- 2012: Gather Partnership input and set priorities
- As directed by WQGIT, gather data, develop methods
- As appropriate, refine and test tools
- Set planning targets for Phase III WIPs
- Develop Phase III WIPs and 2018-2019 milestones

2017

Who has the Lead?

Deliverable	Proposed Lead
Midpoint Assessment Priorities	Water Quality Goal Implementation Team (WQGIT)
Midpoint Assessment Guiding Principles	Principles' Staff Committee, with input from WQGIT and Management Board
Midpoint Assessment Deliverables	CBP Partnership. Specific roles for Workgroups, Modeling Team, etc.
2-Year Milestones	Bay Jurisdictions, Federal Agencies
Phase III Watershed Implementation Plans	Bay Jurisdictions, with input from local partners
Any Possible Revisions to Bay TMDL	U.S. Environmental Protection Agency

Note: Partnership members in addition to the lead may contribute to deliverables

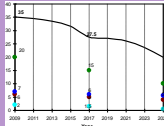
How Does the Midpoint Assessment Relate to the Accountability Framework?

1. Watershed Implementation Plans identify nutrient and sediment targets that meet water quality standards.



Components of Bay TMDL Accountability Framework

2. 2-Year Milestones



with programmatic and pollutant reduction commitments

3. Track and Assess Progress



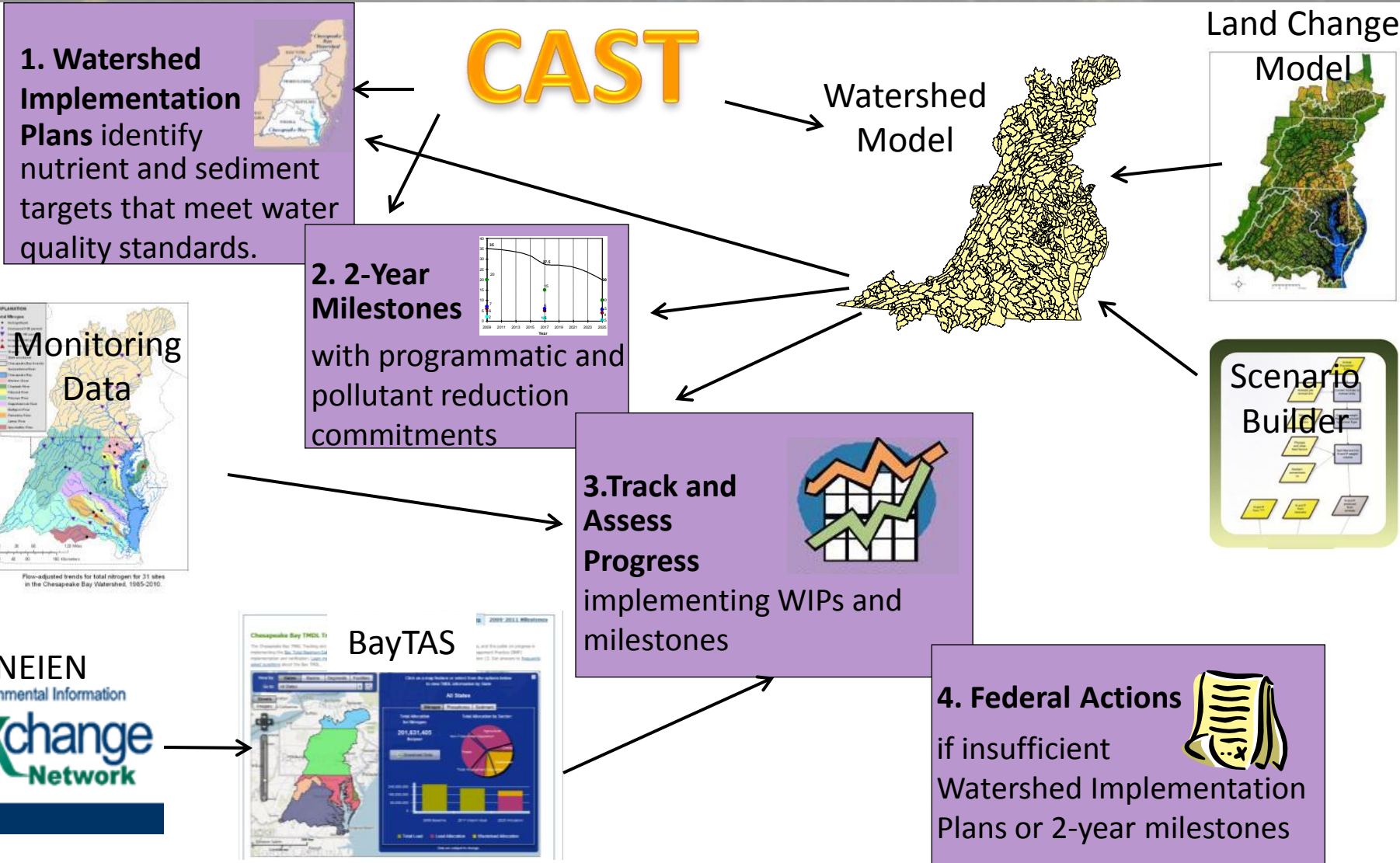
implementing WIPs and milestones

4. Federal Actions



if insufficient Watershed Implementation Plans or 2-year milestones

Framework Informed by Decision Support and Assessment Tools



Some frequently-voiced priorities

- Local Relevance
- Greater Clarity
- Revised land use data set
- Incorporate local data
- Updated and more BMP effectiveness estimates
- Revise model calibration method

Some frequently-voiced urban priorities

- Local data
- Revised land use data set
 - More land use types
 - More data sources
- Look at more local scale effects
 - low-order stream simulation
 - Connected impervious

Who has the lead?

WQGIT

Modeling
Workgroup

STAR

Reduce/Readjust Loads to Meet Standards

WQGIT INPUTS

BMP Data
LU Data
Point Sources
Data
Septic Data
U.S. Census Data
Agricultural Census
Data

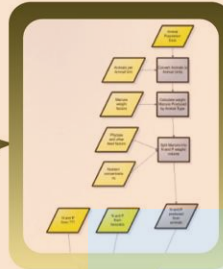
MODEL-DERIVED

Airshed
Model

Land Use
Change Model

Precipitation Data
Meteorological Data
Elevation Data
Soil Data

SCENARIO BUILDER



WATERSHED MODEL



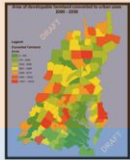
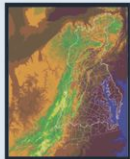
CHESAPEAKE BAY MODEL



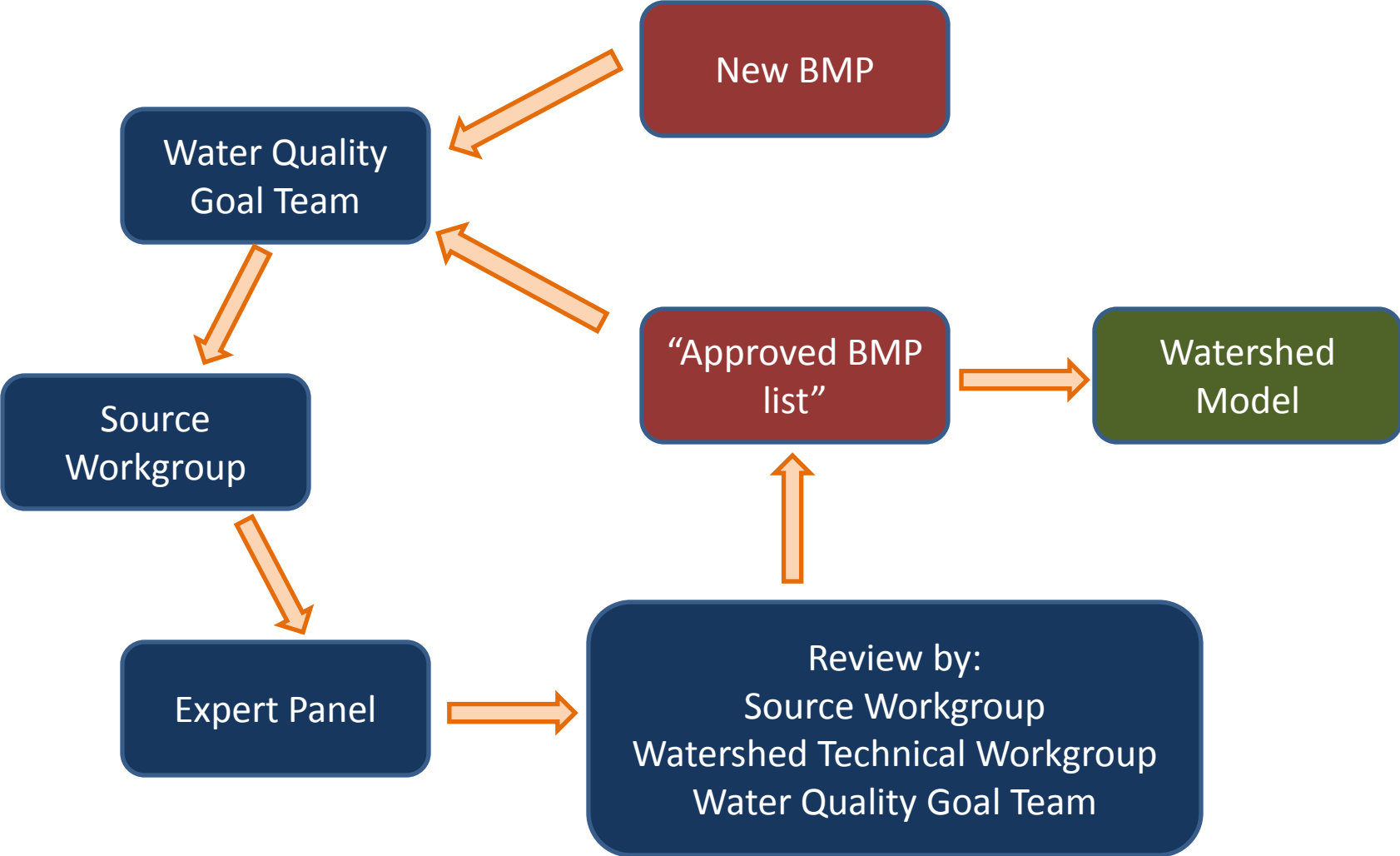
MEET WQS?



ALLOCATION
METHODOLOGY



BMP Effectiveness Estimation Process



Expert Review Panels; planned or active

➤ Agriculture Workgroup

- Nutrient Management
- Poultry Litter
- Conservation Tillage
- Cover Crop Panel
- Manure Treatment Technologies
- Animal Waste Storage Systems
- Manure Injection/Incorporation
- Cropland Irrigation Management

Expert Review Panels; planned or active

➤ Forestry Workgroup

- Riparian Buffers
- Urban Tree Planting
- Forest Management
- Urban Filter Strips and Upgraded Stream Buffers:

Expert Review Panels; planned or active

➤ Urban Stormwater Workgroup

- Stormwater
- Stream Restoration
- LID and Runoff Reduction
- Urban Fertilizer Management
- Erosion and Sediment Control
- Illicit Discharge Elimination
- Impervious Disconnect
- Floating Wetlands
- MS4 Minimum Management Measures

Working Draft of Schedule (Dates Subject to Change)

- Input for the midpoint assessment from WQGIT, WQGIT Workgroups, Modeling Workgroup, others
 - Identification of topics (August 2012)
 - Priorities (September 18, 2012)
- Partnership development of Guiding Principles:
 - August and September: Discussion and feedback solicited from WQGIT
 - September 12: Discussion and feedback solicited from Management Board
 - September 27: Deadline for Management Board comments on Principles
 - October, TBD: Introduce Guiding Principles to PSC
 - Key question: will these Principles help the Partnership set priorities?
- WQGIT Meeting to set priorities, flesh out schedule and develop work plan for midpoint assessment (October 22-23, 2012)
 - Use of draft versions of Guiding Principles to scope extent of the midpoint assessment
- PSC approval of the Guiding Principles (Winter 2013)

Working Draft of Schedule (Dates Subject to Change)

- BMP expert panel and workgroup findings and recommendations (2012 and on)
- As appropriate, refinements to decision support tools (2012 and on)
- Partnership testing of these refinements and, as appropriate, tool modifications in response to this testing (Partners have suggested at least 6 months)
- Development of Phase III Planning Targets, as necessary
- Development of draft and final Phase III WIPs that will guide implementation between 2018 and 2025, upon receipt of Phase III WIP planning targets
 - Some Partners have indicated need 18 months between completion of any model updates and submission of Phase III WIPs
 - In 2010 letter, EPA stated draft Phase III WIPs due June 1, 2017 and final due November 1, 2017
- EPA revisions, as appropriate, to the Bay TMDL