

Update of the Regional Transportation Data Clearinghouse

National Capital Region Transportation Planning Board (TPB)

Travel Forecasting Subcommittee

30 November 2012

Presentation outline

- A short project overview-*what is the Regional Transportation Data Clearinghouse (RTDC)?*
- Application overview- *the RTDC at a glance and application components*
- Highlights – *the main data enhancements for this version of the RTDC*
- Demonstration
- Looking Ahead

What is the RTDC?

- Overall, it is a collection of transportation-related data
 - Includes our own datasets & data collected from member agencies & assembled by us
 - Additional Esri base maps for reference
- RTDC first released over a decade ago as an ArcView 3.2 project
 - Over the years, focus has shifted toward building a comprehensive regional database of traffic counts tied to the TPB master network
 - Expanded to include transit-related count data
- The project is now available as a web map application using the ArcGIS Viewer for Flex (version 3.0)
 - Member jurisdiction and agency staff need an easier way to access our datasets than what has traditionally been delivered to them
 - Provide a more interactive experience via a web interface

The RTDC at a glance

Query layers & display related data tables

Perform queries & export results

Slash screen/ login with credentials

Download RTDC data for use in other applications

Improved and additional popup menus

Download Data by County

Query Data

Advanced Query/Show related data

Search Results

Station ID	ANode-Bnode pair	Direction of Counts	State	Available # of Counts in 2011
B160015	2617826178	S	MD	48
B160015	2617826166	N	MD	48

Related HourlyCountsMD Features

Station ID	Direction	Date & Time	Measured Volume of Vehicle
B160015	N	12/08/08 11:00:00	71
B160015	N	12/10/08 4:00:00	293
B160015	S	12/10/08 2:00:00	341
B160015	S	12/10/08 7:00:00	254
B160015	S	07/12/11 11:00:00	315
B160015	S	07/12/11 4:00:00	173
B160015	N	12/10/08 11:00:00	258
B160015	N	12/10/08 4:00:00	108
B160015	N	07/13/11 10:00:00	252

Query Data Selection Results

Households 200	Population 2005	Employment
293	762	63
551	1434	271
885	2277	612
1913	2260	347
722	1965	574
591	1444	97
25	75	119
182	413	540
529	520	4603

Download Data by County

- Feature Format: File Geodatabase - GDB - .gdb
- Layers to Clip:
 - Metro Stations - Entries
 - Metro Lines
 - Hourly Traffic Counts
 - Annualized Traffic Volumes
 - Transit - Avg. Weekday Ridership
 - Screenlines
 - Activity Centers
 - Activity Clusters
 - Round 8.1 Coop Forecast Data
 - TPB Modeled Area
 - TPB Member Jurisdictions
 - MWCOC Members
- Counties: District of Columbia

Download Data

- Download Data
- Download Data by County
- Download Hourly Count Tables

Sign In

Please sign in to access RTDC data at gis.mwcog.org

Username:

Password:

TPB National Capital Region

Welcome to the TPB Regional Transportation Data Clearinghouse

DISCLAIMER: The Regional Transportation Data Clearinghouse is provided as is without warranty of any kind either expressed or implied. The National Capital Region Transportation Planning Board (TPB) does not warrant, guarantee, or make any representations regarding the use of or results from the use of the data in terms of correctness, accuracy, reliability, completeness, timeliness for a particular purpose, or otherwise. TPB/MWCOC shall not be liable for any loss or injury arising out of or caused in whole or in part by the acts or omissions of TPB, its personnel, or their sources or information whenever negligent or otherwise.

A Quick Start to exploring data:

1. Select layer(s) to view under the **Data Layers** button (top right of window). TIP: Select one layer at a time to view layer attributes and to reduce map clutter.
2. Change the underlying basemap with the **Basemaps** button.
3. Use the navigation tools on the left side of the application to pan and zoom in and out.

Download RTDC data for use in other applications

Improved and additional popup menus

Name/Route = Clara Barton Pkwy GV0006

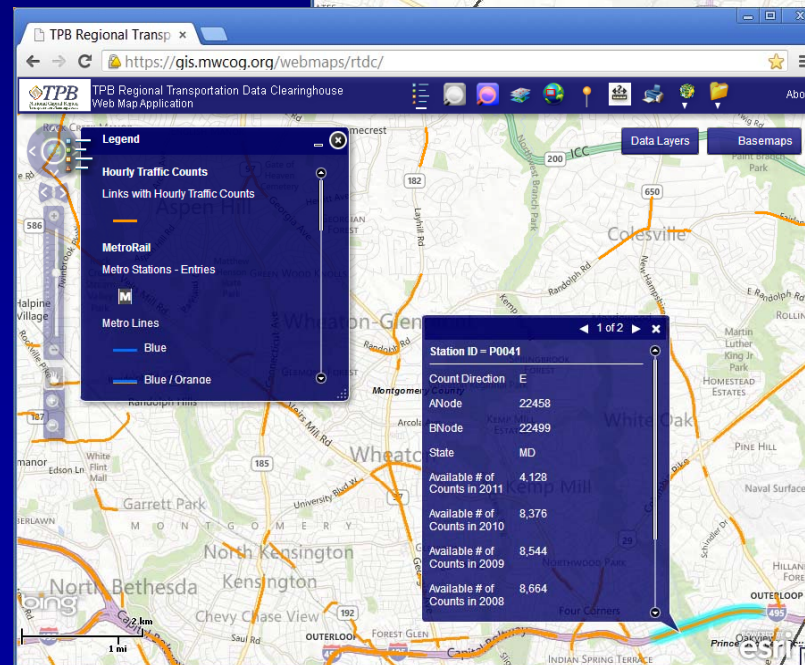
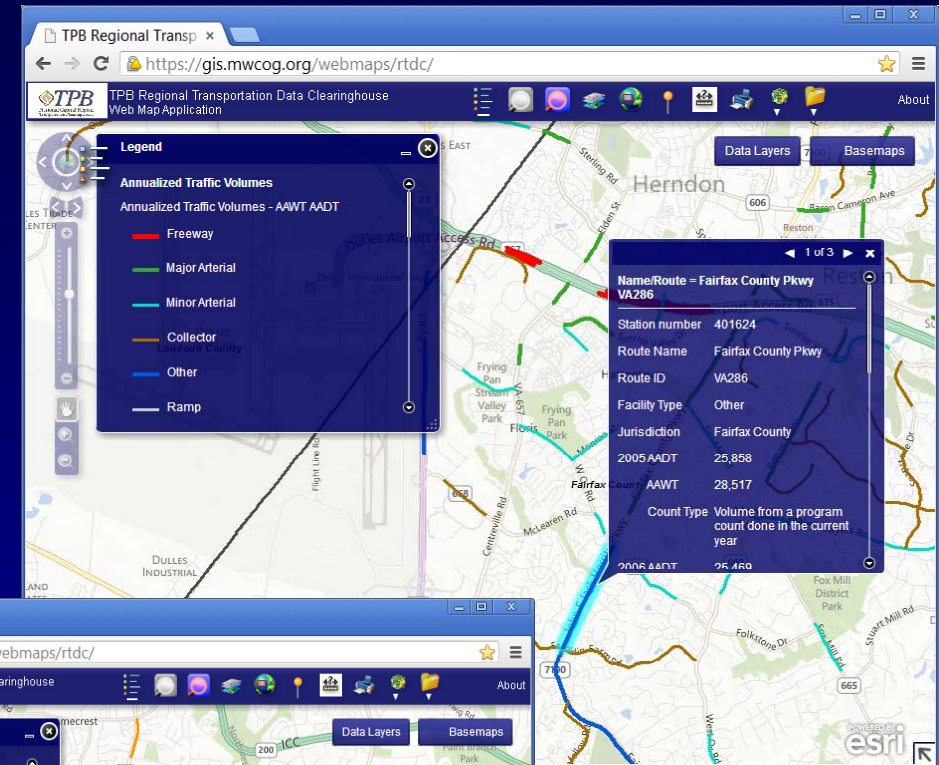
Station number	B150077
Route Name	Clara Barton Pkwy
Route ID	GV0006
Facility Type	Freeway
Jurisdiction	Montgomery County
2005 AADT	10,838
AAWT	11,738
Count Type	Volume from a program count done in the current year
2005 AADT	10,720

Main components of the RTDC

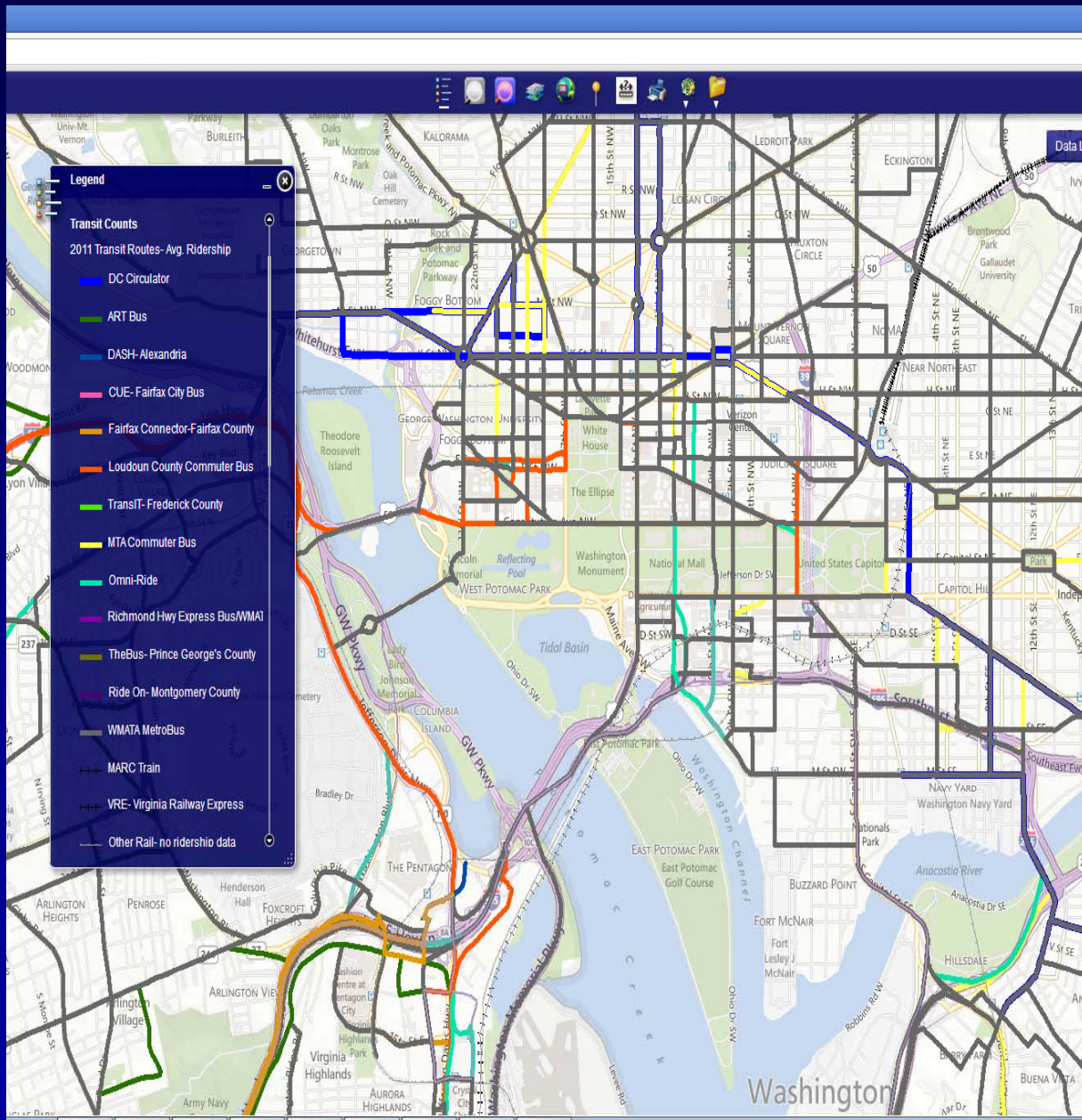
- Widgets- the tools that provide application functionality
 - Query ('select by attribute')
 - Advanced Query- show related data tables
 - Download Data
 - Documents (User's Guide)
 - General
 - Legend – show symbology for data layers
 - Zoom to Jurisdictions
 - Find an Address
 - Draw and Measure
 - Print
- Available data layers
 - Highway network (traffic related)
 - Annualized Traffic Volumes
 - Hourly Traffic Counts
 - Transit Routes- Average Ridership
 - WMATA
 - Metro Stations
 - Metro Lines
 - Round 8.1 Cooperative Forecast by TAZ
 - Version 2.3 Screenlines
 - Activity Centers & Clusters (round 7)
 - Regional Boundaries
 - TPB Modeled Area
 - TPB Planning
 - COG

Highlights- Traffic Counts/Volumes

- Improved traffic count/volume information for TPB regional highway network links
 - Fixed errors with station to link matching
 - Updated Annualized Traffic Volumes layer to include 2005-2011 data
 - Updated Hourly Traffic Counts layer to include 2008-2011 data
 - Utilized TPB highway network (dual link) for counts layers



Highlights- Transit ridership data

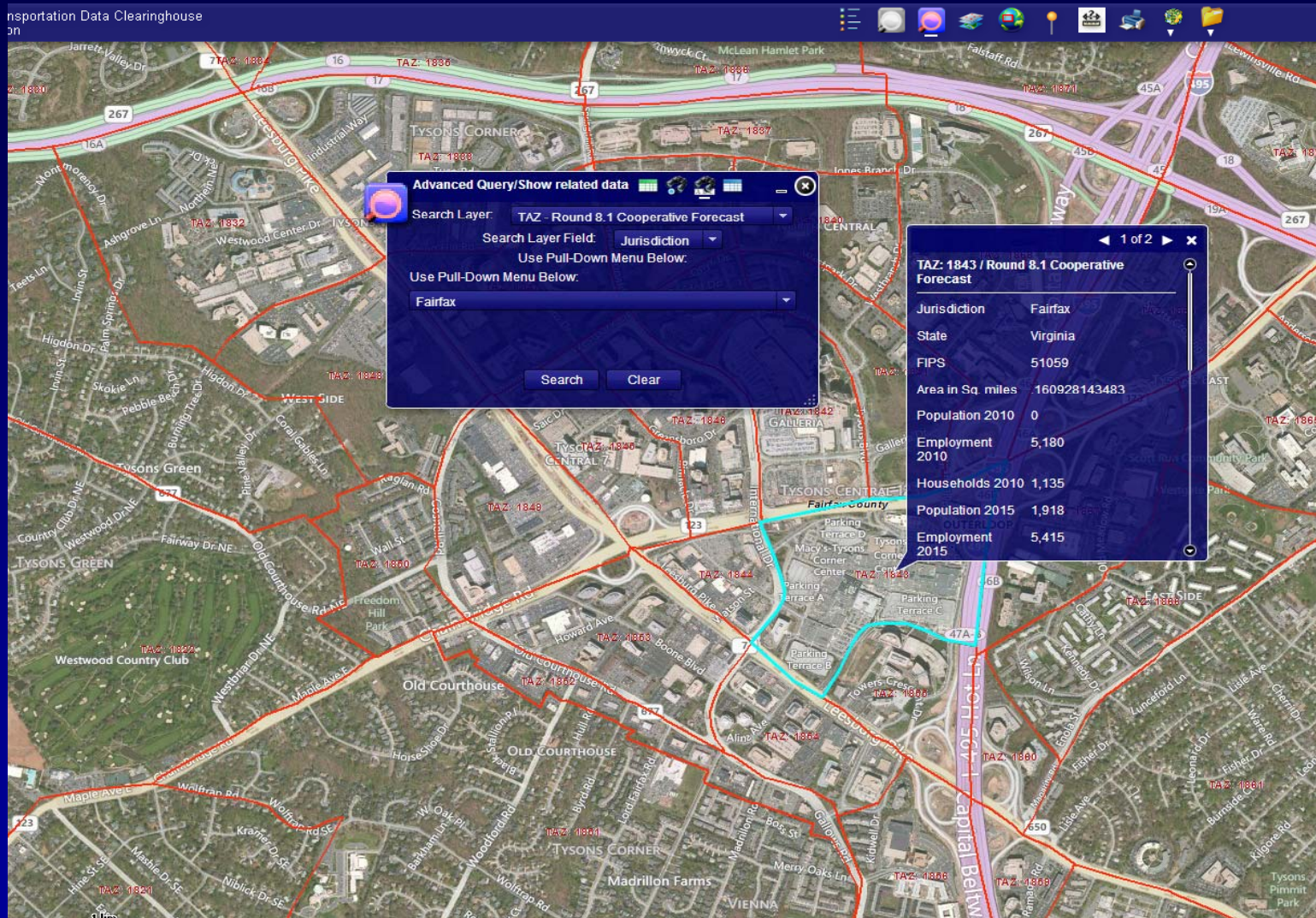


New & existing transit ridership data joined to the 2011 year TPB regional transit network.

Improvements include

- Formerly missing routes with existing ridership data (DC Circulator)
- Existing routes with no ridership data (CUE)
- New transit in service since 2009 (REX)
- Monthly ridership totals through September 2012 (where available)

Highlights- Cooperative Forecast



- Round 8.1 Cooperative Forecast land use data by Transportation Analysis Zone (TAZ)

Demonstration

Looking ahead

- Shorter term
 - RTDC efforts will now go into 'maintenance mode' to address any data inconsistencies, application bugs, etc.
 - Implement database improvements- reorganization of datasets, tables and relationships to improve interaction with the application
- Longer term
 - Data: additional datasets- what can we add to the RTDC?
 - Data: update current RTDC layers with current data as it becomes available
 - Application: additional ways to access the data via the interface
 - Application: alternate development platform for RTDC?

The RTDC team

Charlene Howard

John Kent

Martha Kile

Nicole McCall

Yew Yuan

For more questions, please contact

Charlene Howard
Principal GIS Analyst
202/ 962.3384
charlene@mwkog.org

<https://gis.mwkog.org/webmaps/rtdc>