

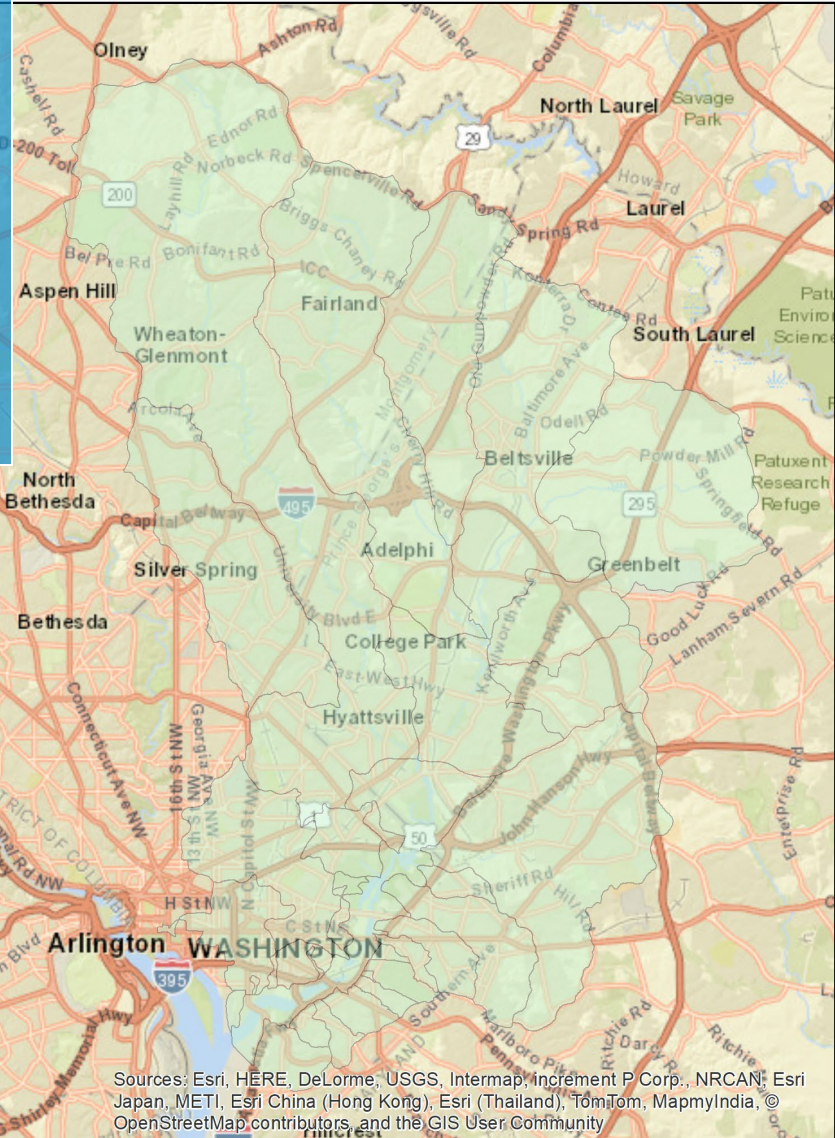
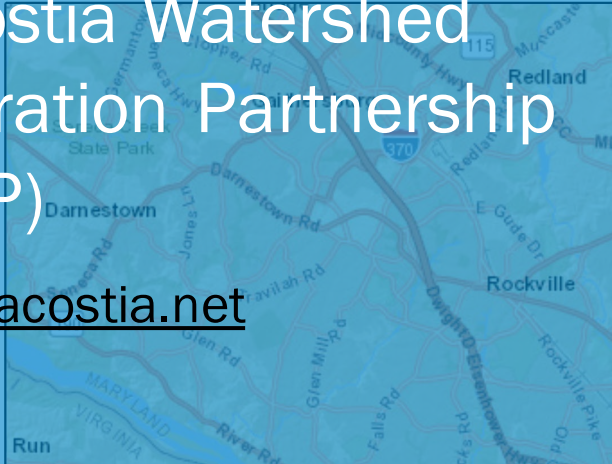
INTEGRATING EEAS INTO EXISTING PROGRAMS

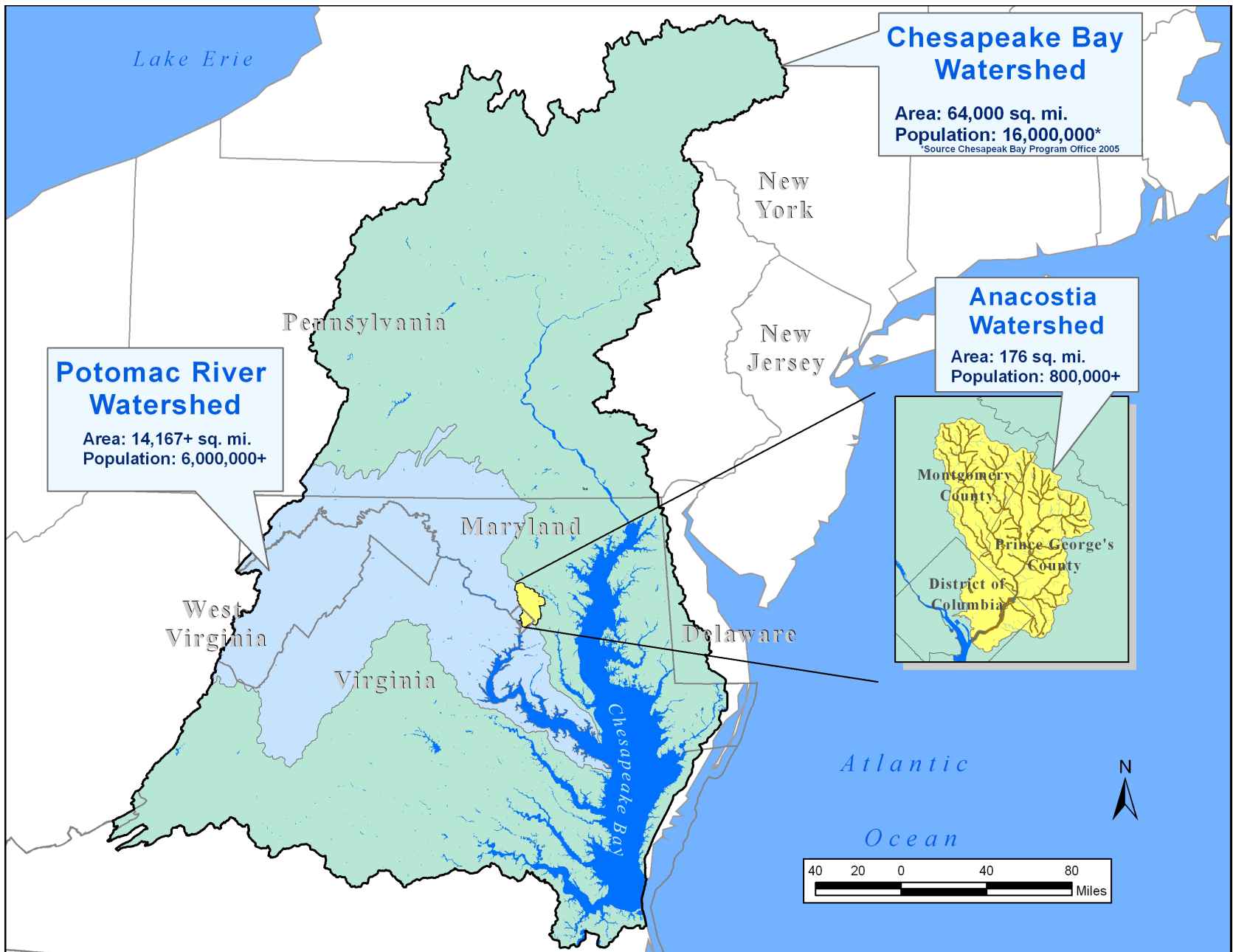
Aubin Maynard
Environmental Planner

COG
11/18/22

Anacostia Watershed Restoration Partnership (AWRP)

www.Anacostia.net





Promote Urban Tree planting





MARYLAND

Department of Natural Resources



Forest Service Home

About Us

Forestry Education

Forest and Tree Canopy Data

Forestry Facts

Volunteer Opportunities

Chesapeake Forests

The Online Forester

Annual Report

Backyard Buffers Program

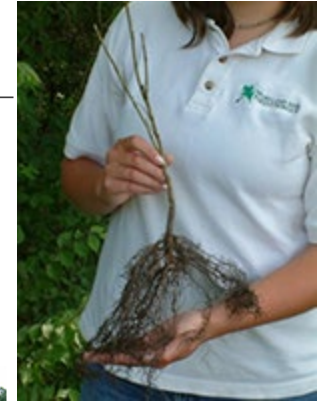


“A Landscape That Will Make A Difference”

Clean water through the Backyard Buffers program

The Maryland Forest Service and the Potomac Watershed Partnership present the Backyard Buffers program, designed to assist homeowners who have a waterway on or adjacent to their property to create a streamside buffer of native trees and shrubs.

A streamside buffer can create habitat for wildlife, reduce peak winter temperatures, and reduce the amount of sediment, fertilizer and toxic materials that enter our waterways. Deep-rooted trees and shrubs can also stabilize streambanks, protecting them from erosion.



<https://dnr.maryland.gov/forests/pages/programs/backyard-buffer-program.aspx>

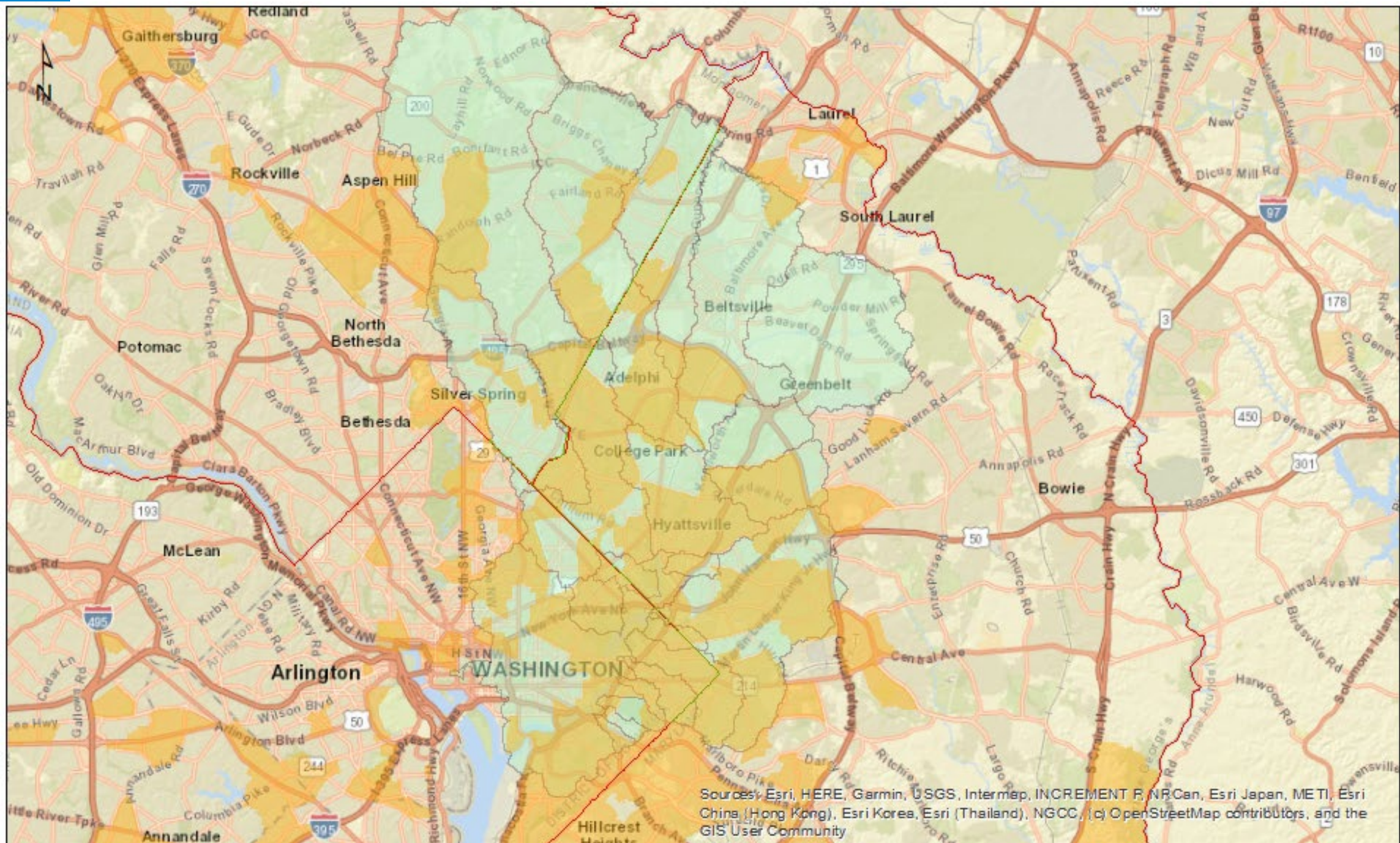


Metropolitan Washington
Council of Governments



- **Equity Emphasis Areas (EEAs)** are a regional planning concept adopted in 2021 by the COG Board of Directors to elevate equity and inform future growth and investment decisions.
- As of a 2022 update, 364 of the region's more than 1,300 census tracts are identified as EEAs, meaning they have high concentrations of low-income individuals and/or traditionally disadvantaged racial and ethnic population groups.
- EEAs were originally developed by the Transportation Planning Board to analyze potential impacts of its long-range transportation plan but will now be applied more broadly across disciplines, such as health, housing, and climate, as part of *Region United*, COG's Metropolitan Washington Planning Framework for 2030.





Sustainable Maryland-Green Team

<https://sustainablemaryland.com/certification/participating-communities>



- ACTIONS
- CERTIFICATION
- RESOURCES
- EVENTS
- GET INVOLVED

Participating Communities

Use the search features below to learn how certified communities successfully completed Sustainable Maryland actions. You can filter by **certification status**, **action**, and **county**.

85 TOTAL REGISTERED 41 CURRENTLY CERTIFIED 2,568 ACTIONS COMPLETED

MAP VIEW LIST VIEW

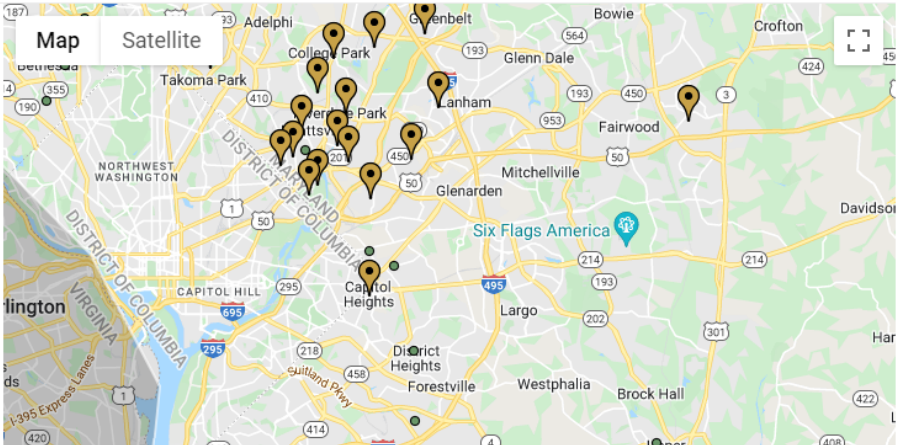
Filter This Map

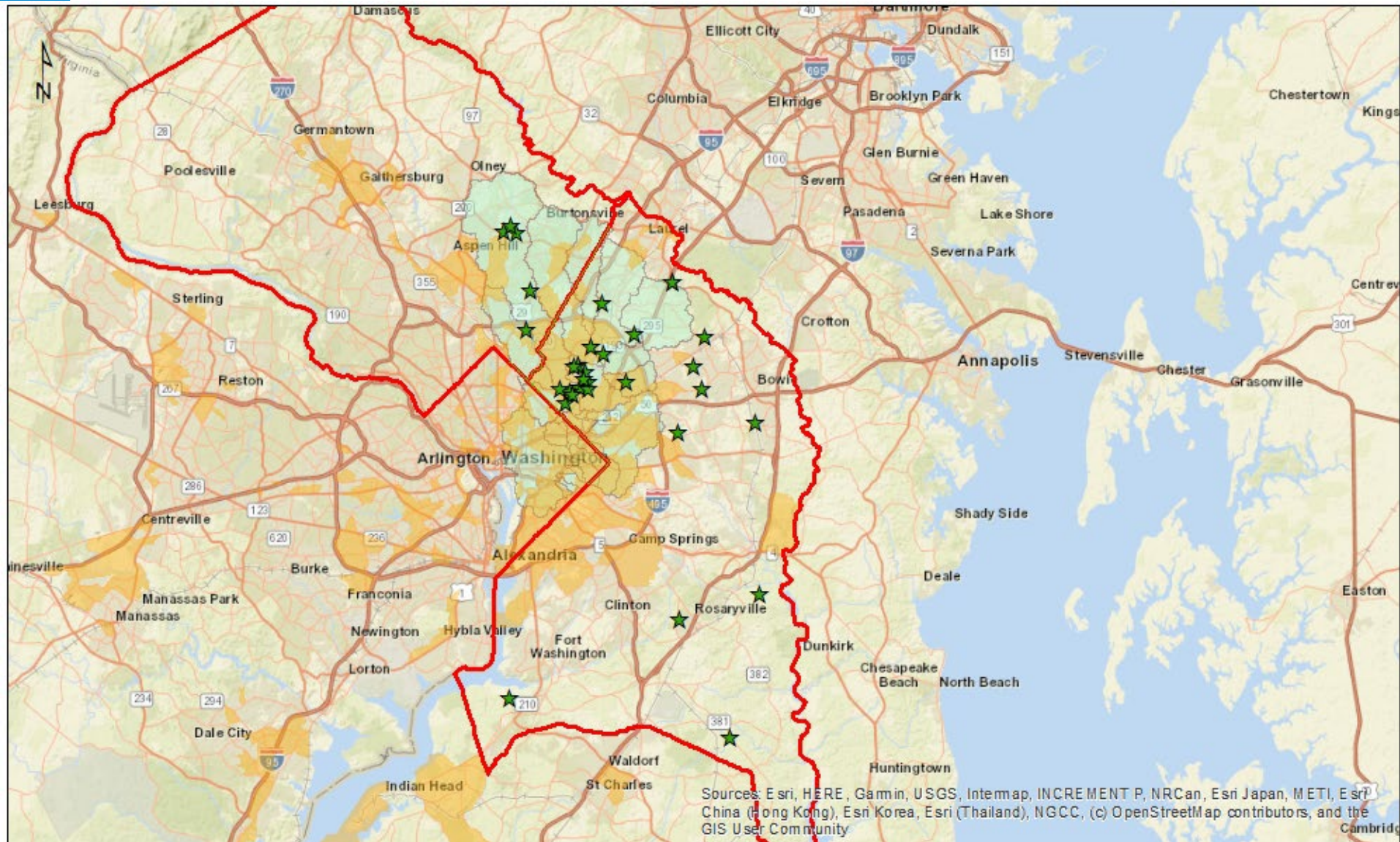
By Status

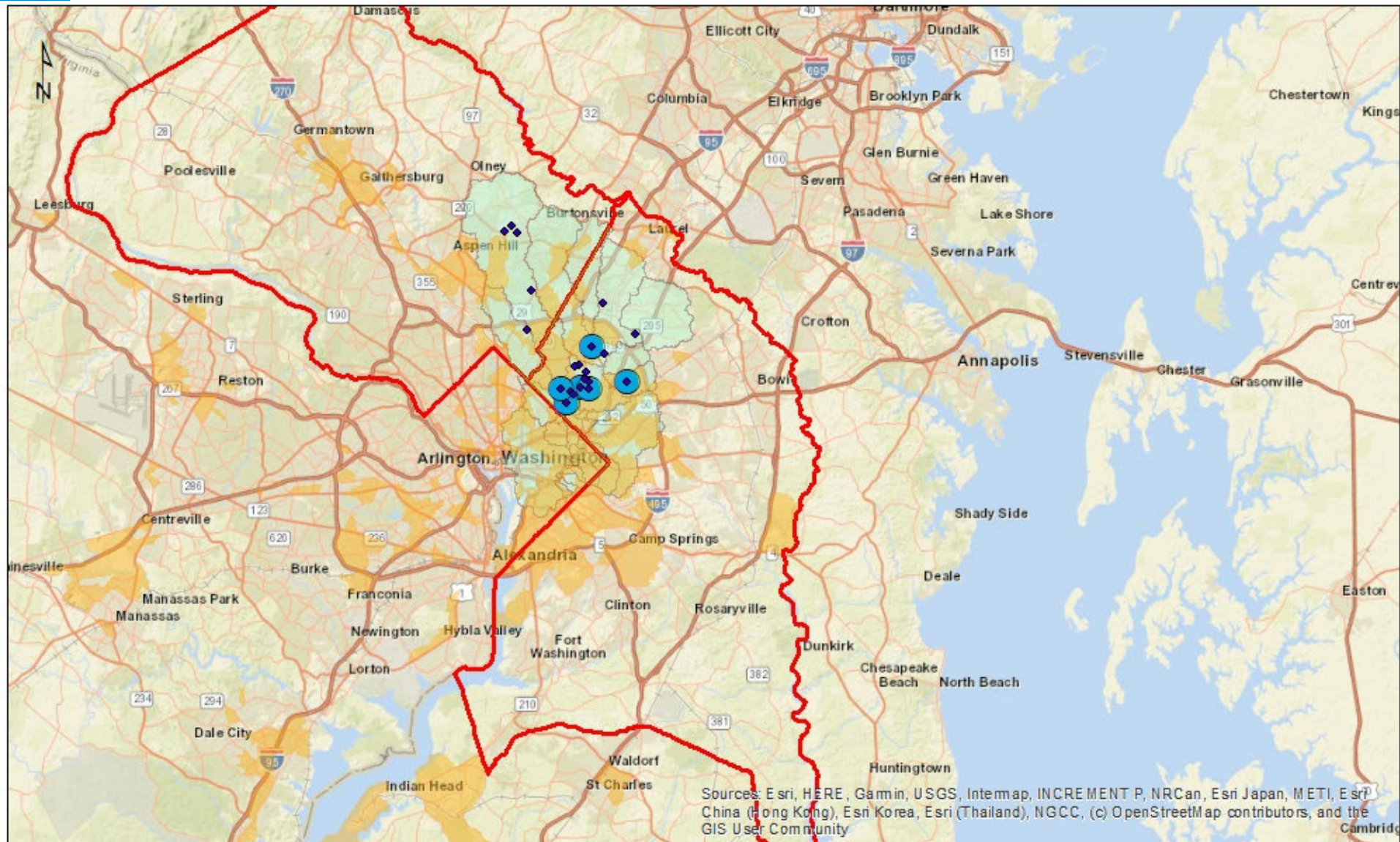
- Registered
- Bronze Certified
- Silver Certified
- Any Certified
- Any

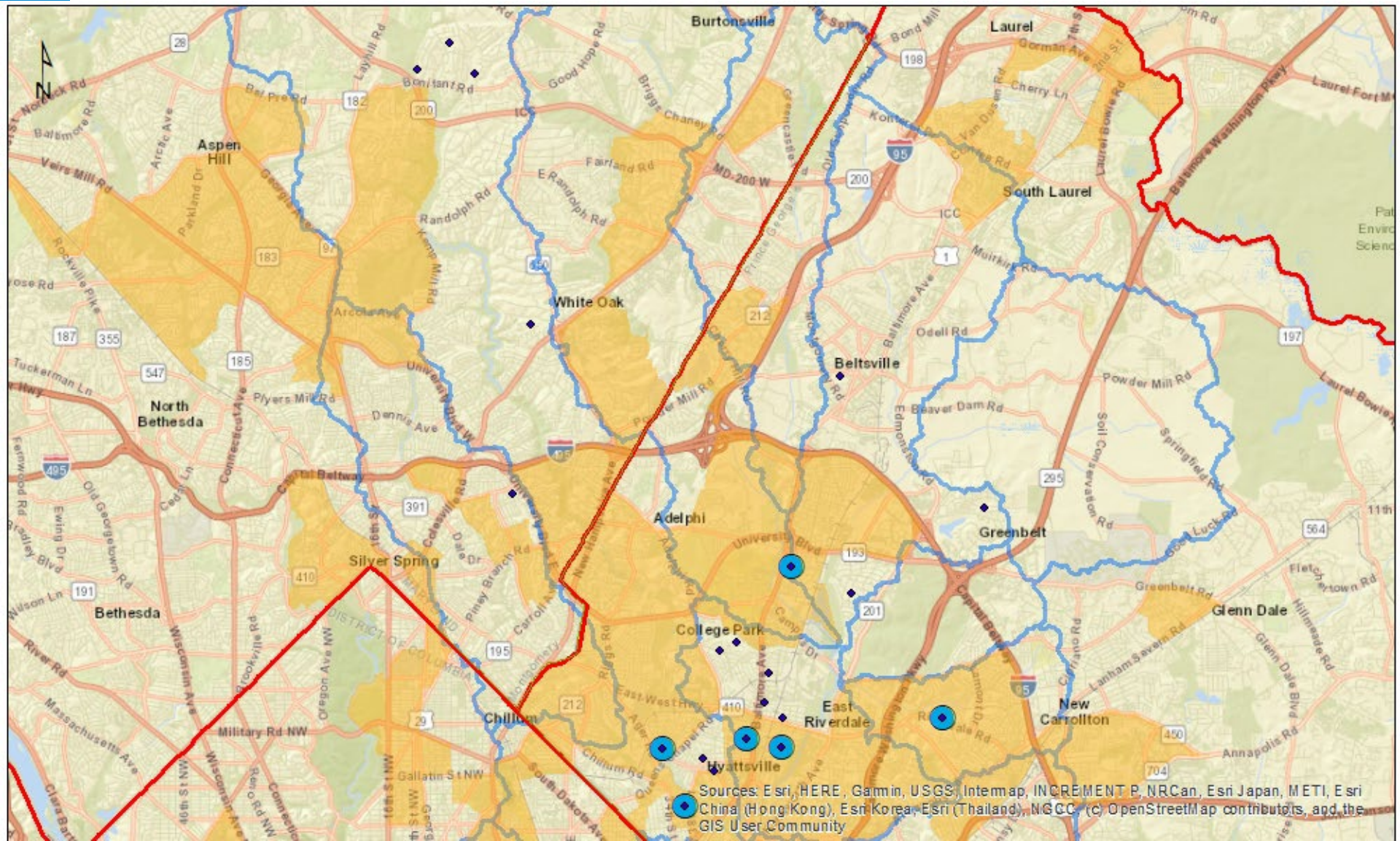
FILTER RESET

By Certified Action









Sources: Esri, HERE, Garmin, USGS, Intermap, INCREMENT P, NRCan, Esri Japan, METI, Esri China (Hong Kong), Esri Korea, Esri (Thailand), NGCC, (c) OpenStreetMap contributors, and the GIS User Community

Aubin Maynard

Environmental Planner

(202) 962-3233

amaynard@mwcog.org

www.mwcog.org

www.anacosita.net

777 North Capitol Street NE, Suite 300

Washington, DC 20002



Metropolitan Washington
Council of Governments

Additional References:

- Methodology for Equity Emphasis Areas:

<https://www.mwcog.org/assets/1/6/methodology.pdf>

