

UPDATE ON THE EQUITY EMPHASIS AREAS

for TPB's Title VI/Environmental Justice Analysis

Wendy Klancher
TPB Transportation Planner

Citizens Advisory Committee
March 8, 2017



Enhanced Title VI/Environmental Justice (EJ) Analysis

Federal Requirement: The TPB must examine the Constrained Long-Range Transportation Plan for any disproportionately high and adverse impacts on low-income and minority populations.

Enhanced Title VI/EJ Analysis – Two Phases:

1. Identification of concentrations of low-income and/or minority populations (“Equity Emphasis Areas”)
2. Analysis of the 2016 CLRP amendment using multiple accessibility and mobility measures

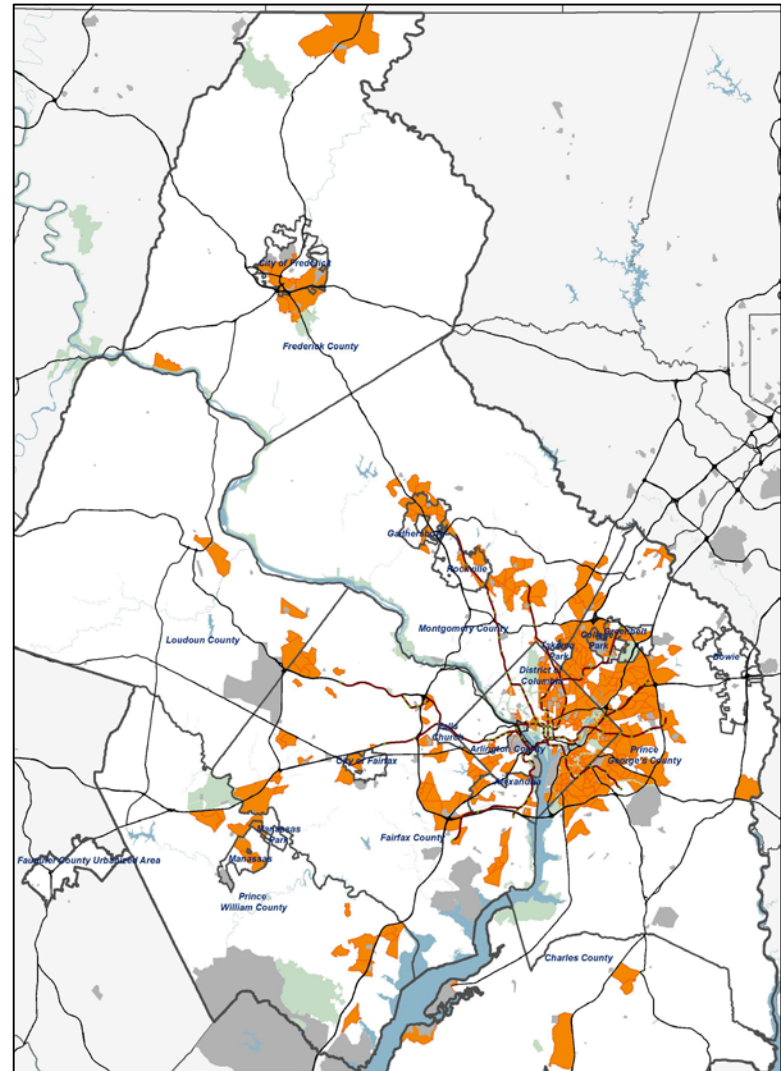


What are the Equity Emphasis Areas?

“Equity Emphasis Areas” are small geographic areas with concentrations of low-income and/or minority populations.

Purpose:

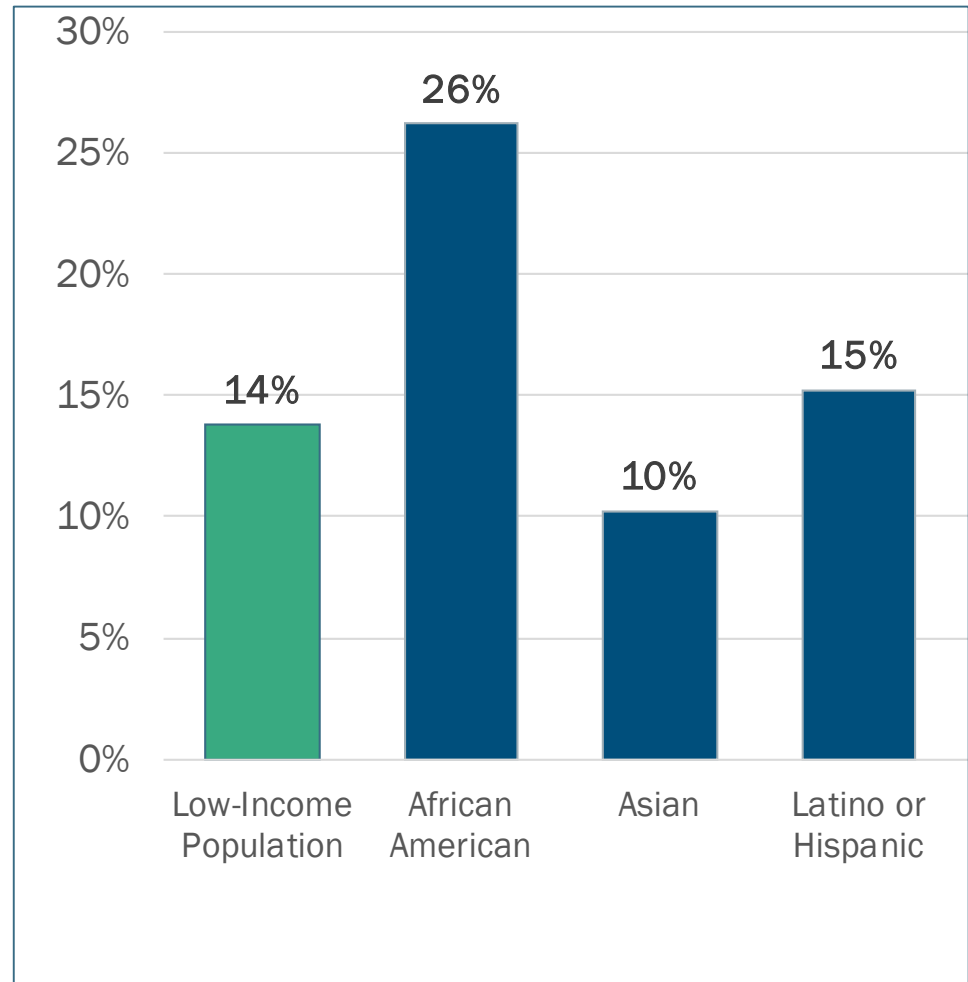
- Title VI/ Environmental Justice Analysis of the CLRP
- Other Planning Activities



How Were Equity Emphasis Areas Defined?

Using U.S. Census tract-level data from the 2010 to 2014 American Community Survey for:

- Low-Income
- African American
- Asian
- Latino or Hispanic



Source: U.S. Census 2010-2014 American Community Survey;
Demographic categories are not discrete

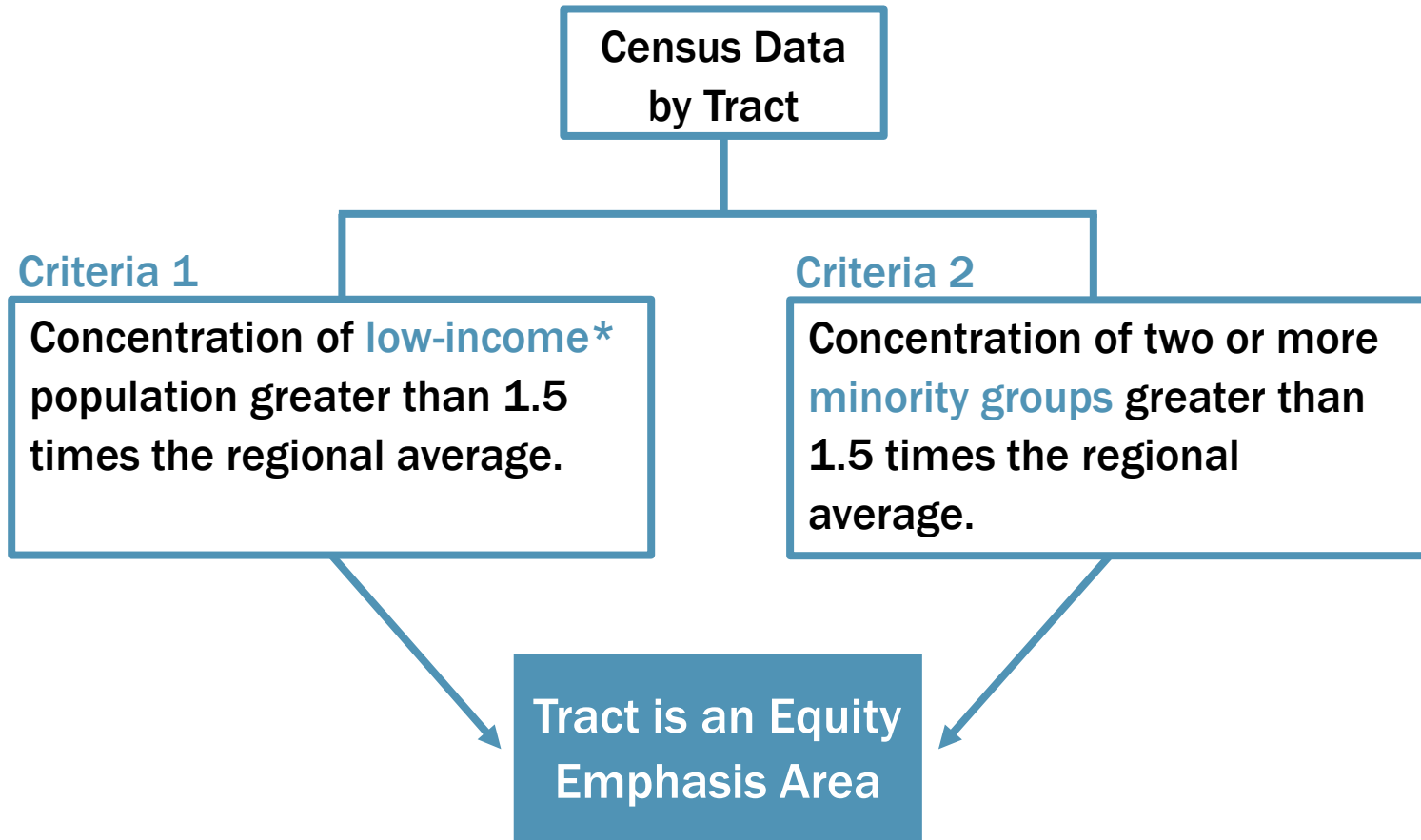


Modification to the Methodology for the Equity Emphasis Areas (EEAs)

- During the January TPB meeting, concerns were expressed that areas with **high concentrations of a single minority group were not included as EEAs**
- Staff re-examined the methodology and conducted sensitivity tests to identify a modified method to address the concerns



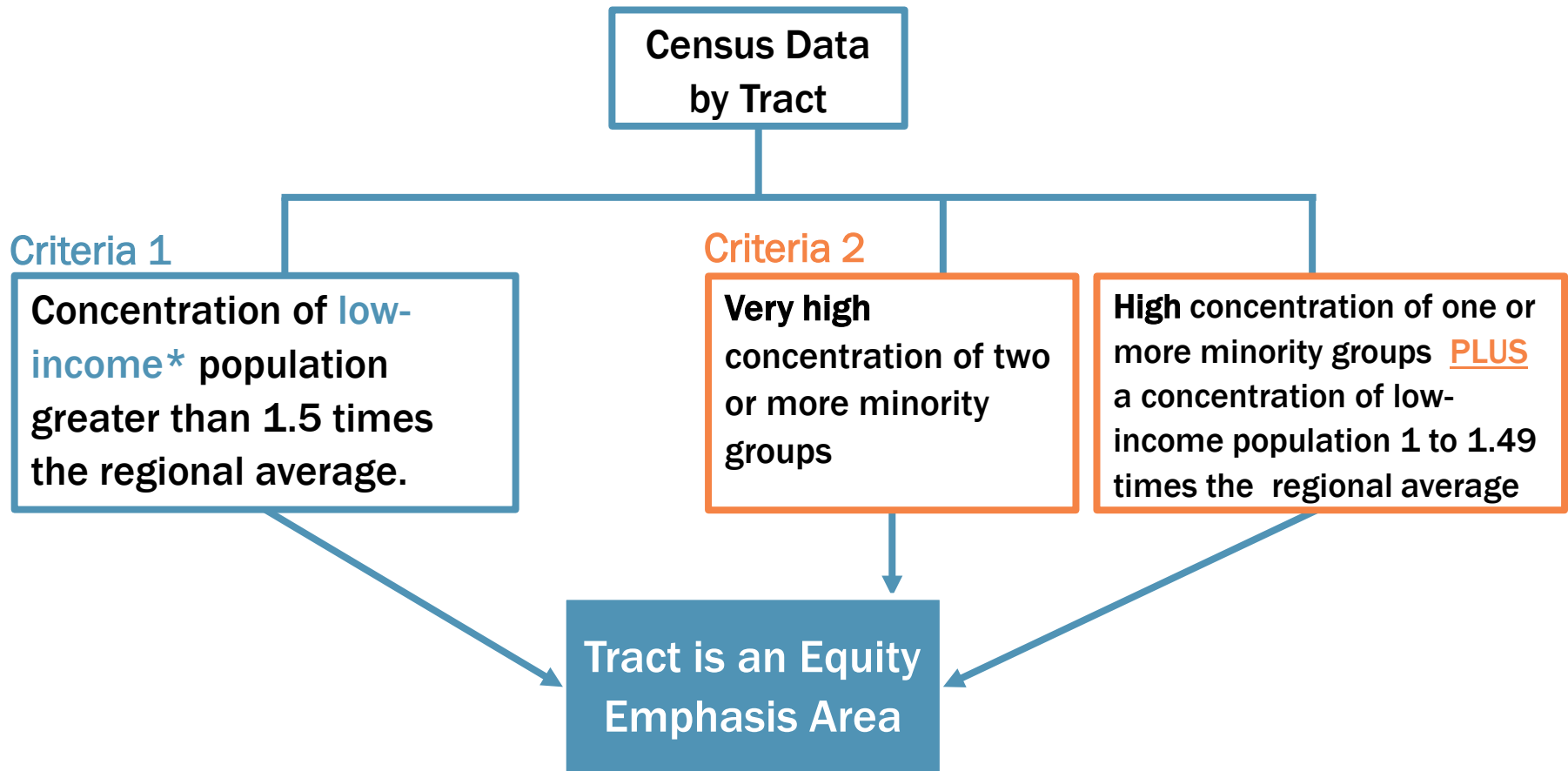
Original Approach for EEAs



*Low-income is defined as a household income less than 1.5 times the Federal poverty level, depending on size.



Modified Approach for EEAs



*Low-income is defined as a household income less than 1.5 times the Federal poverty level, depending on size.



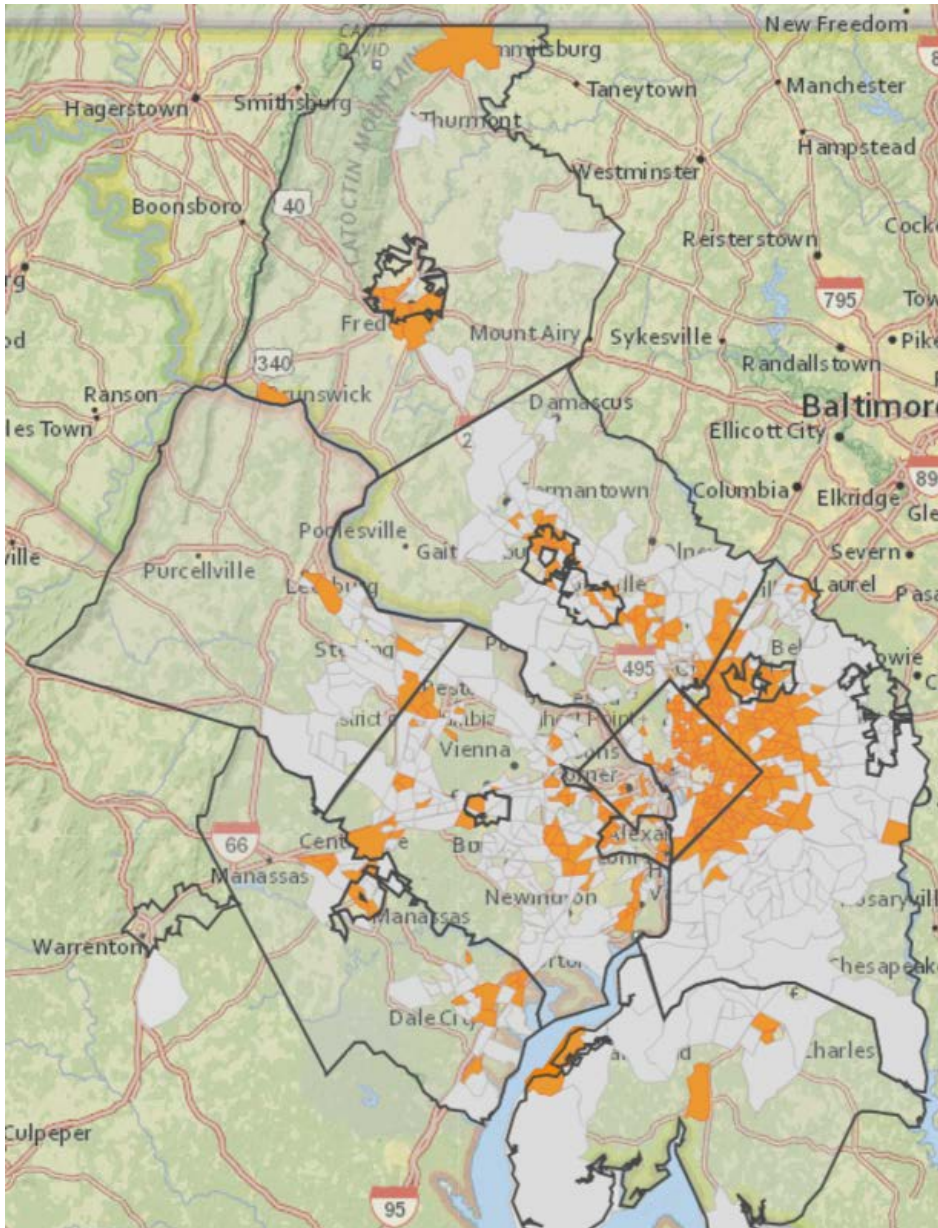
Consultation on the Modified Methodology

- Planning Directors Technical Advisory Committee: **Feb 17**
- Webinar for TPB members and Technical Committee: **Feb 22**
- Technical Committee: **March 3**

TPB will be asked to endorse the modified Equity Emphasis Areas on March 15



Interactive Map of Equity Emphasis Areas

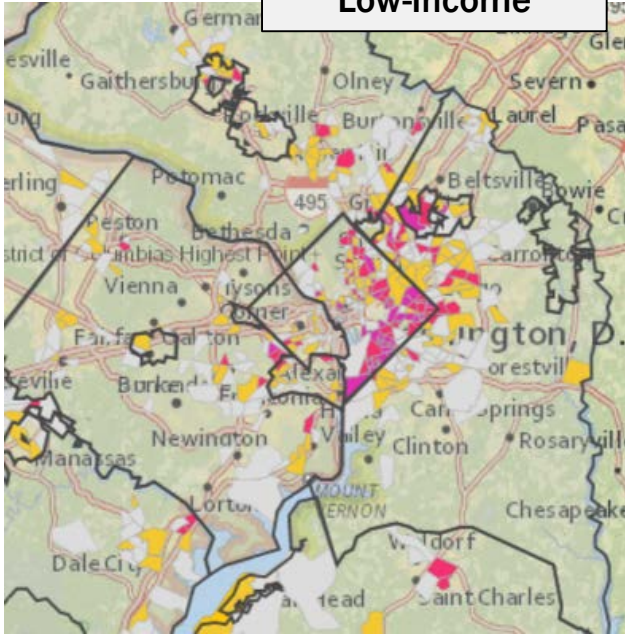


<https://gis.mwcog.org/webmaps/tpb/clrp/ej>

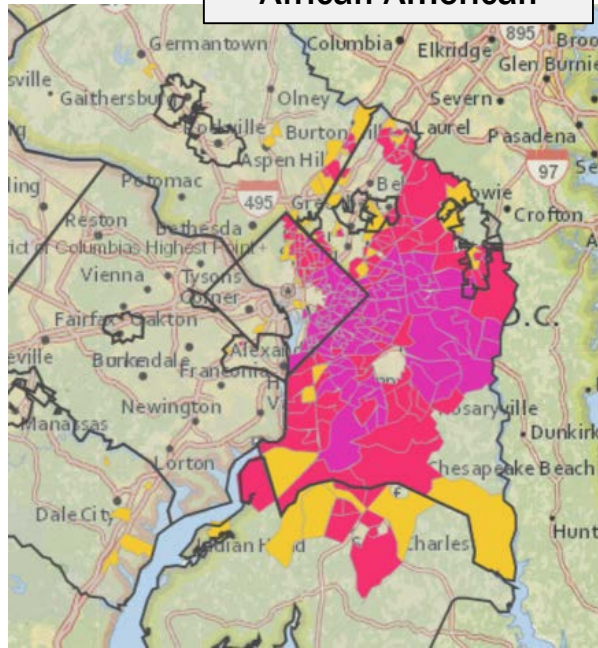
Username: review

Password: draft.map

Low-Income

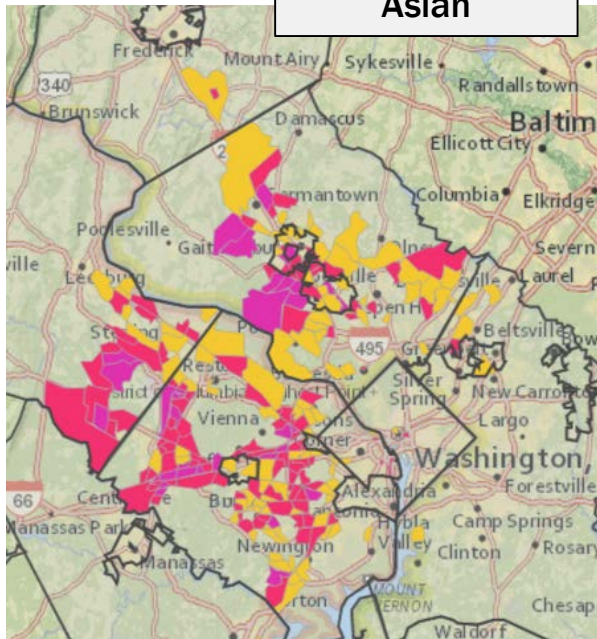


African-American

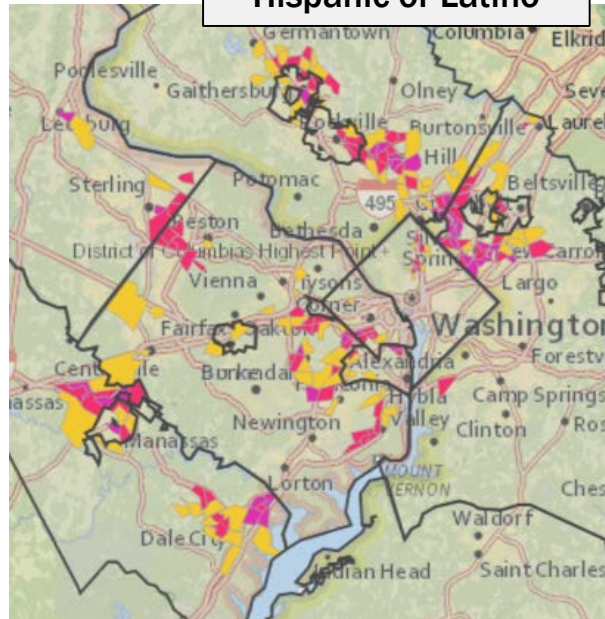


Demographic Data in Interactive Map

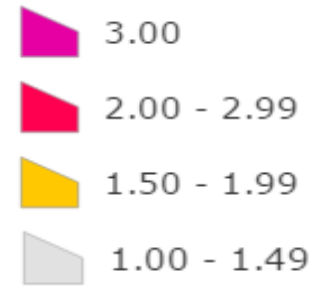
Asian



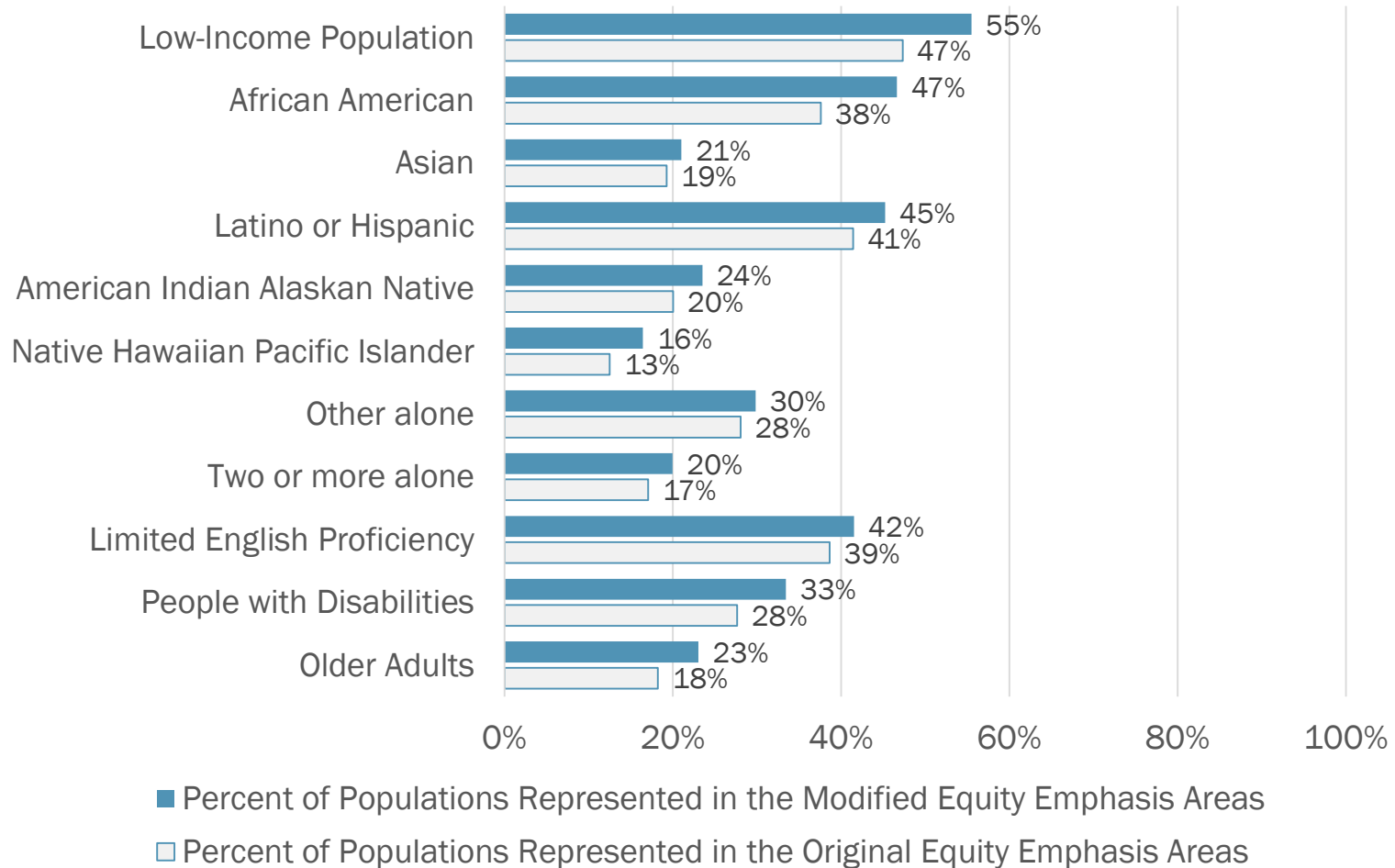
Hispanic or Latino



Index Scores



Population's Represented in EEA's



Next Steps

After TPB endorsement of the Equity Emphasis Areas, TPB staff will:

- Conduct the Title VI/EJ analysis of the 2016 CLRP (late March-May)
- Develop and review draft findings (May-June)
- Brief the TPB (June-July)
- Develop a report documenting methodology and findings (June-July)



Wendy Klancher

TPB Principal Transportation Planner

(202) 962-3321

wklancher@mwkog.org

Sergio Ritacco

Transportation Planner

(202) 962-3232

sritacco@mwkog.org

mwkog.org/TPB

Metropolitan Washington Council of Governments

777 North Capitol Street NE, Suite 300

Washington, DC 20002



National Capital Region
Transportation Planning Board