

BUS TRANSIT SERVICE EQUITY – 2022 UPDATE

Overview

Eric Randall, TPB Transportation Engineer

Transportation Planning Board
October 19, 2022



Presentation Outline

- Purpose of 2022 Update
- Sample Map: Regional People of Color – Access to Bus Stops
- Key Findings – Regional Access
- Bus Transit Equity Webmap – *Demonstration*



Purpose of 2022 Update

- Updates the analysis prepared last year and briefed to the TPB in October 2021
- Information for long term (post-pandemic) service changes to improve the equity of bus service in the region
- The analysis evaluated the locations of select population groups (e.g., people of color, low-income households, non-native English speakers) in relation to local bus transit stop locations, frequency of service, and other factors
- Analysis and webmap prepared by ICF Consulting and Foursquare Integrated Transportation Planning

Findings – Regional Access

Sixty percent of the total population in the COG region is within a ¼ mile of a local bus stop

- Only 35% have access to 15-minute or better service in the AM peak period

Persons of color, people with low incomes, and zero and one-car households have higher access to bus stops than the general population

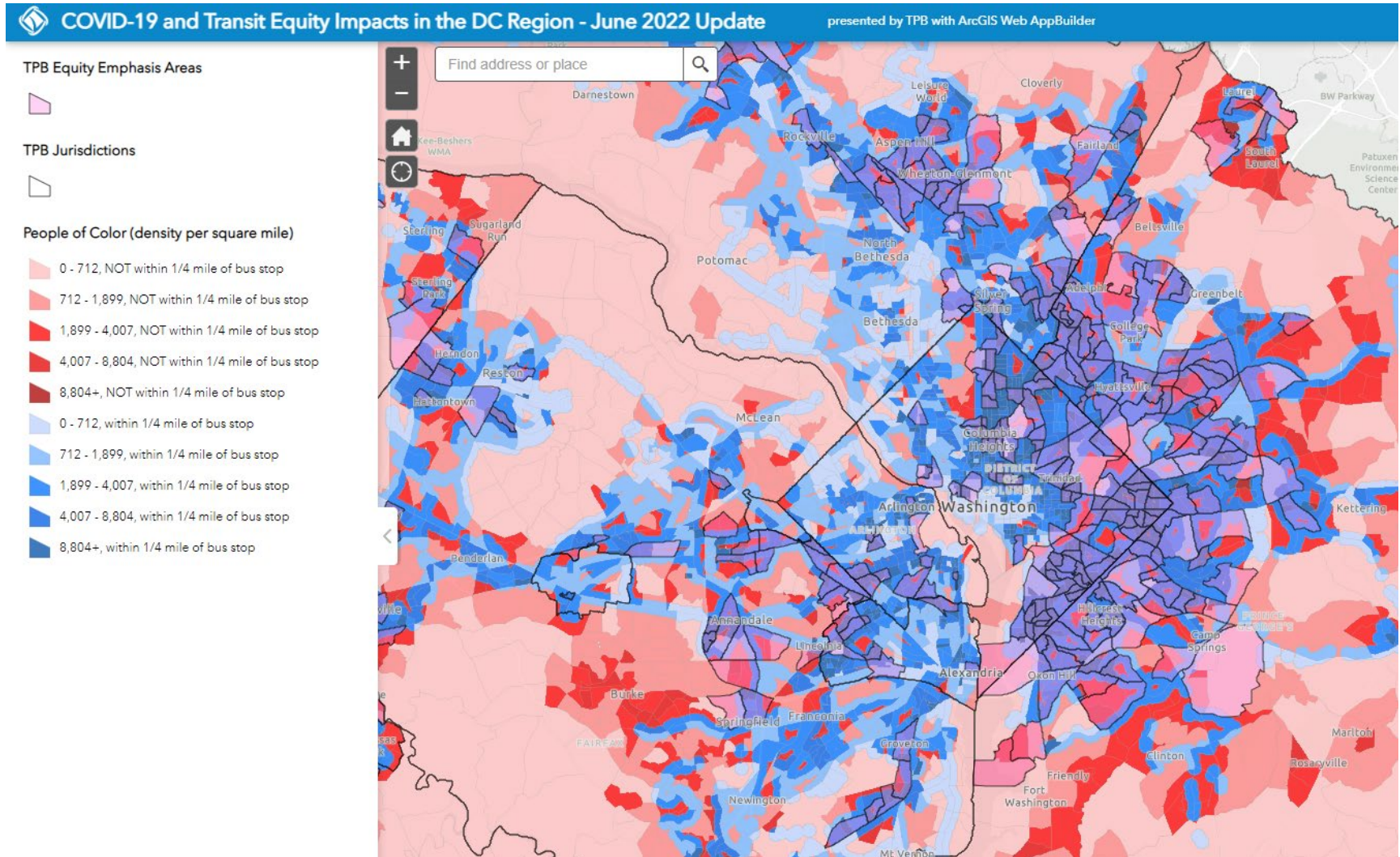
- 65% of people of color and 74% of low-income households are within a ¼ mile of bus stops
- However, only 35% of people of color and 43% of low-income households have access to 15-minute or better service in the peak periods

The low percentage of access to frequent service, even in the peak periods, remains a concern, particularly for quality of life and jobs access



People of Color – Access to Local Bus Stops

- Any area that is dark red is of high priority for transit service



Transit Equity Webmap - Demonstration

<https://fitp.maps.arcgis.com/apps/webappviewer/index.html?id=9947fb0f78084a06aae2e747e093964b>

COVID-19 and Transit Equity Impacts in the DC Region - June 2022 Update presented by TPB with ArcGIS Web AppBuilder

TPB Equity Emphasis Areas

TPB Jurisdictions

Find address or place

Welcome to TPB's *Assessing Distribution of Local Bus Transit Service for Equity - 2022 Update* Web Application.

This app enables users to view local bus transit service equity data. This app can be used to inform decision-makers on where to prioritize local bus transit service to address equity and ensure that travel options are available for all.

This analysis was conducted as a part of a [June 2022 update](#) to the 2021 white paper the *Assessing Distribution of Bus Transit Service for Equity During COVID-19 Pandemic* White Paper, found [Here](#). This update included methodology improvements and more recent job and population data sources. For more information on MWCOC's Equity Initiatives, click [Here](#).

General Tips for Use:

1. The top right of the screen comprises of five data menus (see next section) and two menus for general context. **Other Layers** contains layers for TPB's member jurisdictions' boundaries and TPB's Equity Emphasis Areas. **Bookmarks** contains spatial bookmarks that can be used to automatically zoom in to each jurisdiction.
2. Click the **•••** to the left of each layer to modify its appearance including transparency, visibility range, and drawing order. This legend can be hidden with the arrow button on its outer edge.
3. The controls on the top left can be used to zoom in on the map manually, find a particularly address, or view the user's current location on the map.

The data is organized into the following five menus:

- Distribution of Transit Service** contains layers that show how near or far people and jobs are from existing transit service.
- Network Job Accessibility** contains layers that show the total jobs accessible within a 45-minute bus trip from all points in the region.
- Current Transit Service** shows the current bus transit available through the region at the route level.
- Pandemic Impacts** shows how local bus transit service has changed during the pandemic, compared to before the pandemic.
- Index Analyses** Index Analyses combines results from multiple menus to answer the question: "Which areas with high transit equity need lost the most service?"

OK



Eric Randall

TPB Transportation Engineer

(202) 962-3254

erandall@mwkog.org

mwkog.org/tpb

Metropolitan Washington Council of Governments

777 North Capitol Street NE, Suite 300

Washington, DC 20002



National Capital Region
Transportation Planning Board