

EXECUTIVE DIRECTOR'S REPORT

May 2021 Update

Chuck Bean
COG Executive Director

COG Board of Directors
May 12, 2021

Transit Within Reach Program

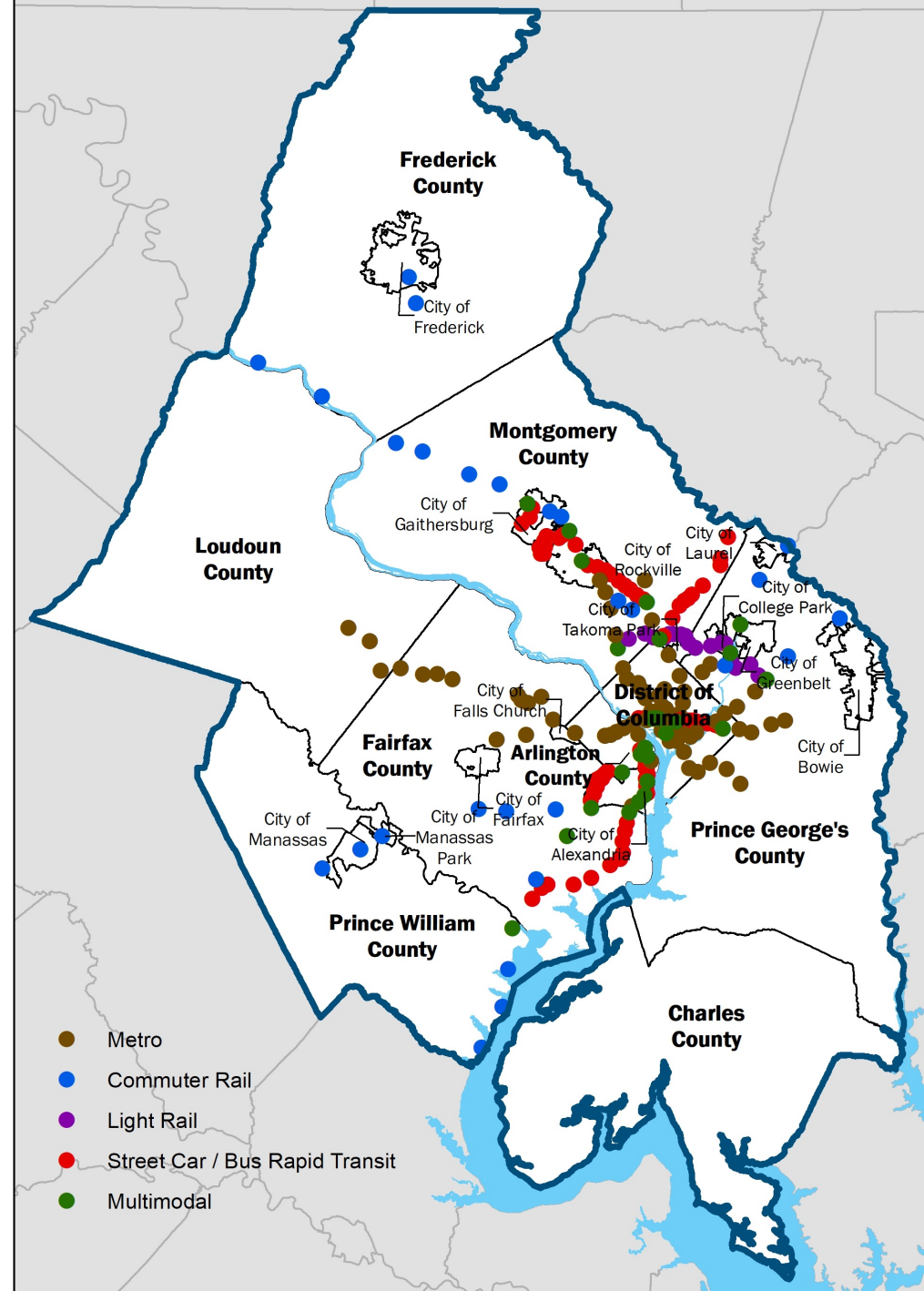
- New TPB technical assistance for projects that improve bike and walk connections to transit.
- Funds short-term consultant services including:
 - Cost estimates
 - Engineering systems description and analysis
 - Schematic drawings and renderings
 - Site surveys
- Apply by July 2.



225 High Capacity Transit Station Areas, 2030

- Areas around Metrorail, commuter rail, light rail (Purple Line), streetcar, and BRT.
- 10 percent of the region's land mass (350 sq. miles).
- Growth here now and more expected.

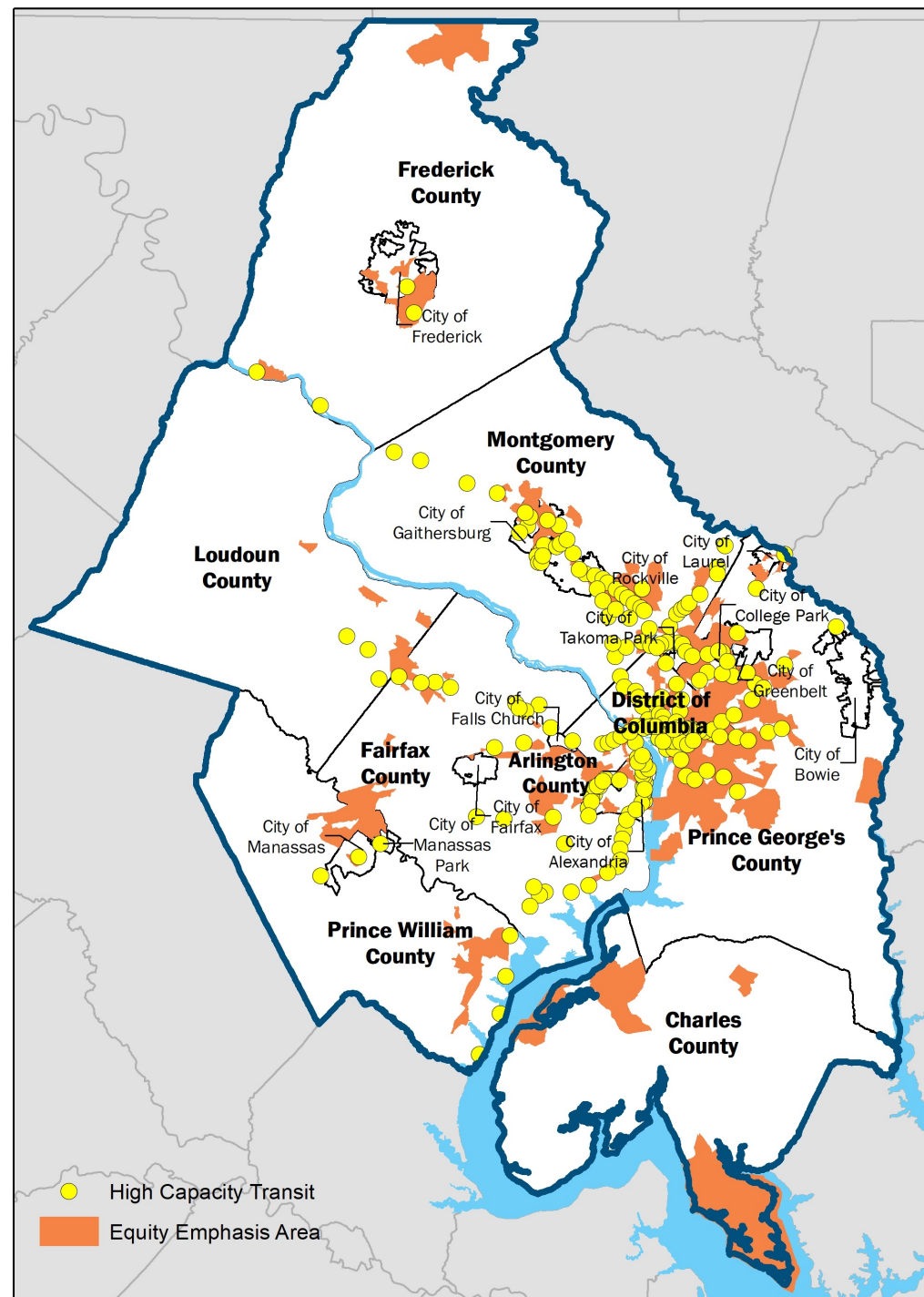
mwcog.org/HighCapacityTransit



225 High Capacity Transit Station Areas & 350 Equity Emphasis Areas, 2030

- Majority of HCTs contain an Equity Emphasis Area.
- Equity Emphasis Areas contain high concentrations of underserved groups.

mwcog.org/HighCapacityTransit



Federal Funding Opportunities

- CAOs discussion on American Rescue Plan and American Jobs Plan
 - Staff memo on American Jobs Plan
- Special funding available for Enhanced Mobility program - transportation services for older adults and people with disabilities
 - \$532,000 first round (approved)
 - \$590,000 second round (apply beginning May 21)



(Echo)

Office of Finance and Administrative Services



Chuck Bean

COG Executive Director
cbean@mwkog.org

mwkog.org

777 North Capitol Street NE, Suite 300
Washington, DC 20002



Metropolitan Washington
Council of Governments