



Round 9A Summary

Metropolitan Washington Council of Governments
Cooperative Forecasting and Data Subcommittee

November 10, 2020



Round 9A

- **Overview of Forecasting Process**
 - Who develops forecasts?
 - When are forecasts updated?
 - What data points are included in the forecasts?

Round 9A

- **Overview of Forecasting Process**
 - Who develops forecasts?
 - When are forecasts updated?
 - What data points are included in the forecasts?
- **Previous Forecast Rounds:**

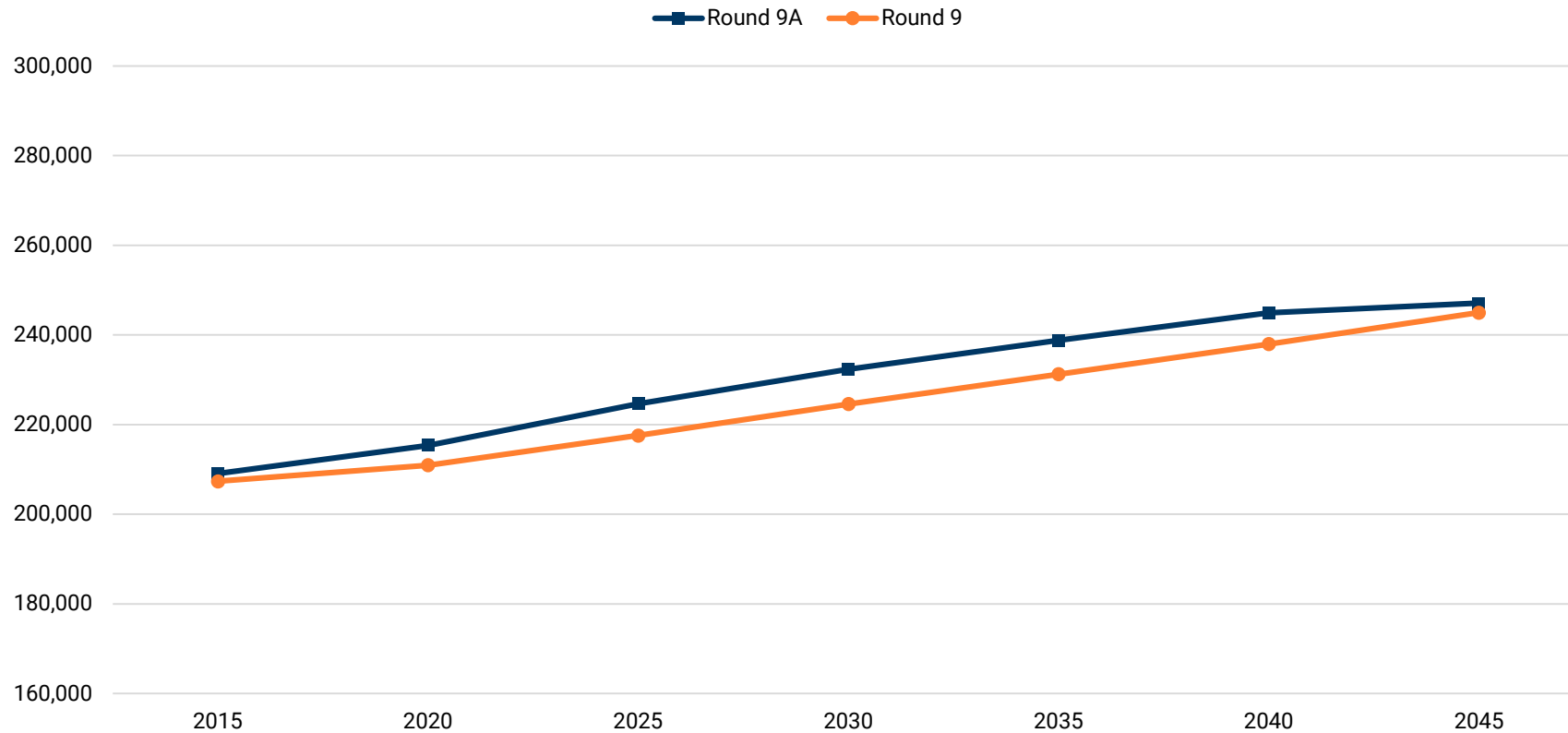
Round	Date	Round	Date
Round 1	March 1980	Round 6A	December 2004
Round 2	February 1983	Round 6B	August 2005
Round 3	September 1986	Round 6C	October 2006
Round 3A	December 1988	Round 7	February 2007
Round 4	September 1991	Round 7A	August 2008
Round 5	September 1994	Round 7B	July 2009
Round 5A	October 1997	Round 7C	July 2010
Round 5B	December 2000	Round 8	August 2013
Round 5C	May 2001	Round 8A	June 2014
Round 5D	August 2002	Round 8B	August 2016
Round 6	December 2003	Round 9	June 2018

Round 9A

- **Three participating jurisdictions**
 - **Anne Arundel County**
 - Population
 - Households
 - Baltimore County
 - Population
 - Households
 - **Howard County**
 - Population
 - Households

Anne Arundel County

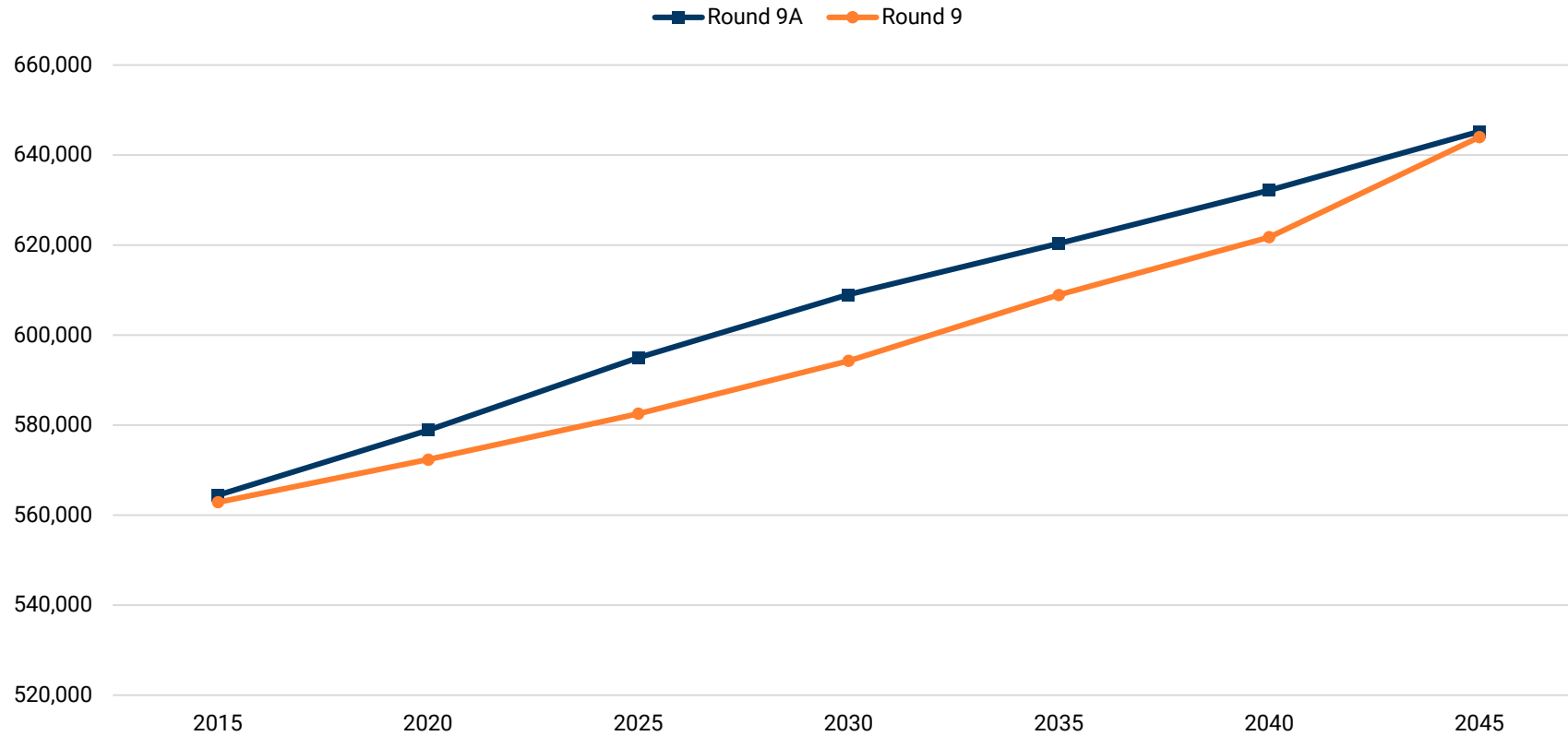
Anne Arundel County: Households



Households	2015	2020	2025	2030	2035	2040	2045	Chg	% Chg
Round 9A	209,104	215,369	224,654	232,360	238,833	244,964	247,110	38,006	18.2%
Round 9	207,338	210,959	217,565	224,575	231,253	237,951	244,998	37,660	18.2%
Chg	1,766	4,410	7,090	7,785	7,580	7,013	2,112	346	
% Chg	0.9%	2.1%	3.3%	3.5%	3.3%	2.9%	0.9%	0.9%	

Source: Local Jurisdictions (Draft Round 9A); Baltimore Regional Transportation Board (Round 9, June 2018); Baltimore Metropolitan Council.

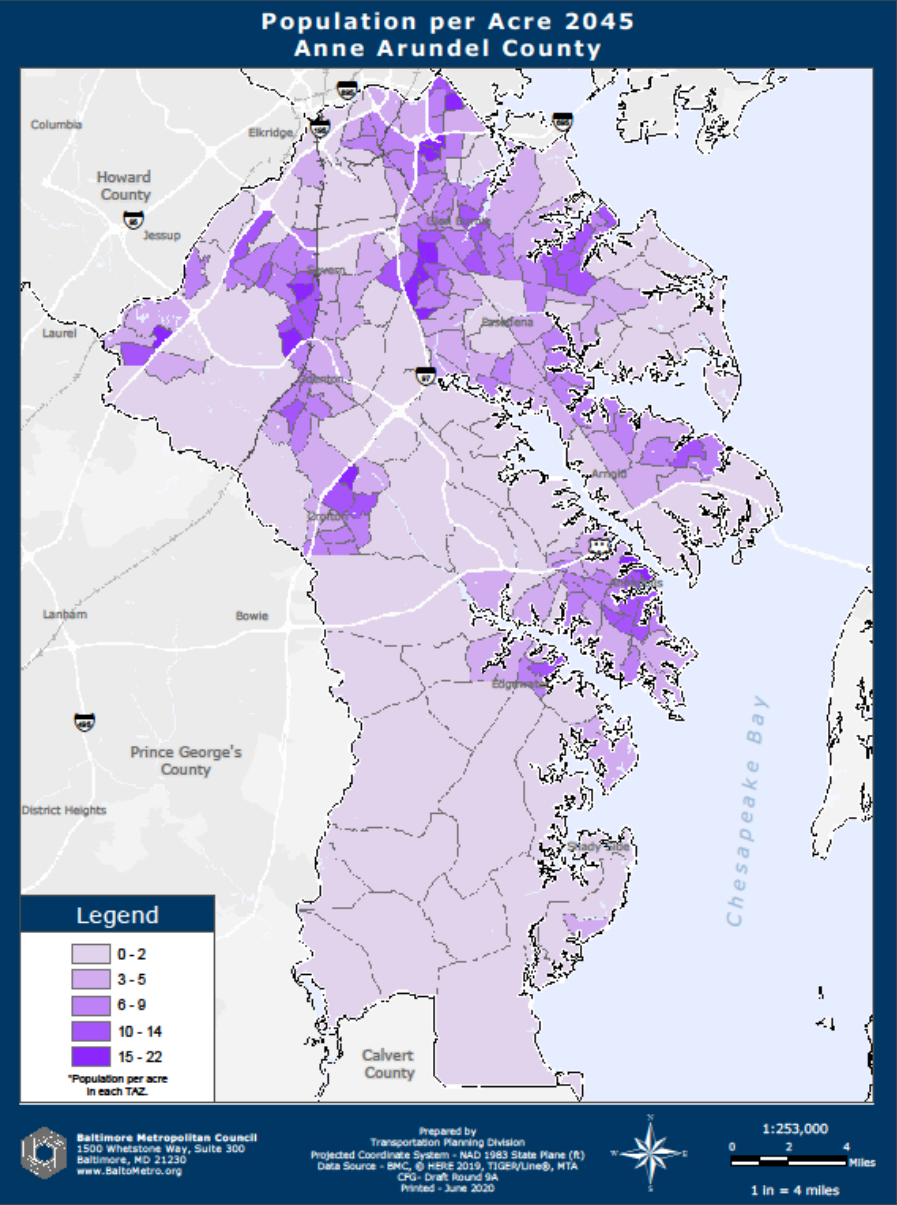
Anne Arundel County: Population



Population	2015	2020	2025	2030	2035	2040	2045	Chg	% Chg
Round 9A	564,420	578,883	594,998	608,993	620,354	632,195	645,195	80,775	14.3%
Round 9	562,867	572,340	582,566	594,303	608,928	621,771	643,978	81,111	14.4%
Chg	1,552	6,543	12,432	14,690	11,426	10,424	1,216	-336	
% Chg	0.3%	1.1%	2.1%	2.5%	1.9%	1.7%	0.2%	-0.4%	

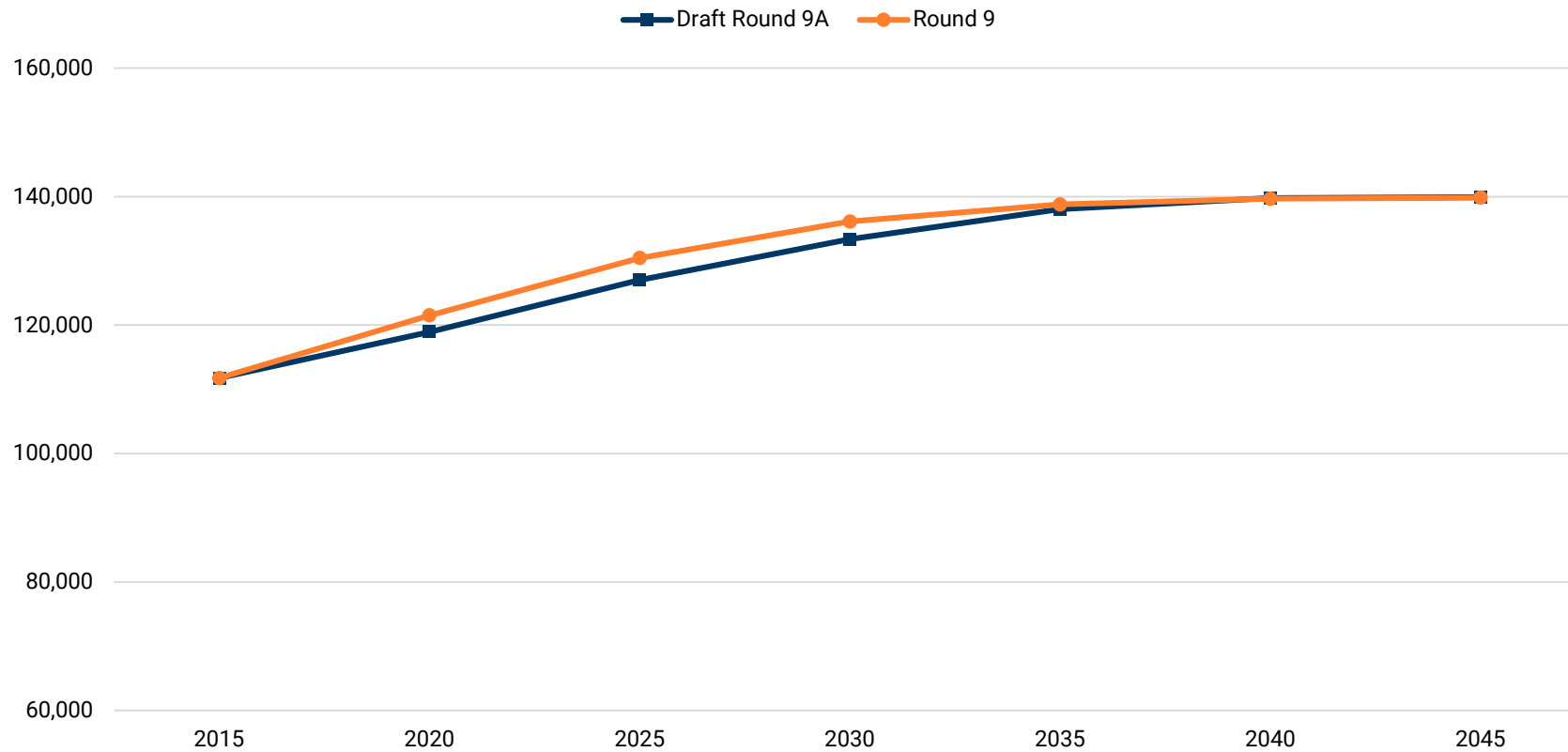
Source: Local Jurisdictions (Draft Round 9A); Baltimore Regional Transportation Board (Round 9, June 2018); Baltimore Metropolitan Council.

Anne Arundel County: Population Density, 2045 (Draft Round 9A)



Howard County

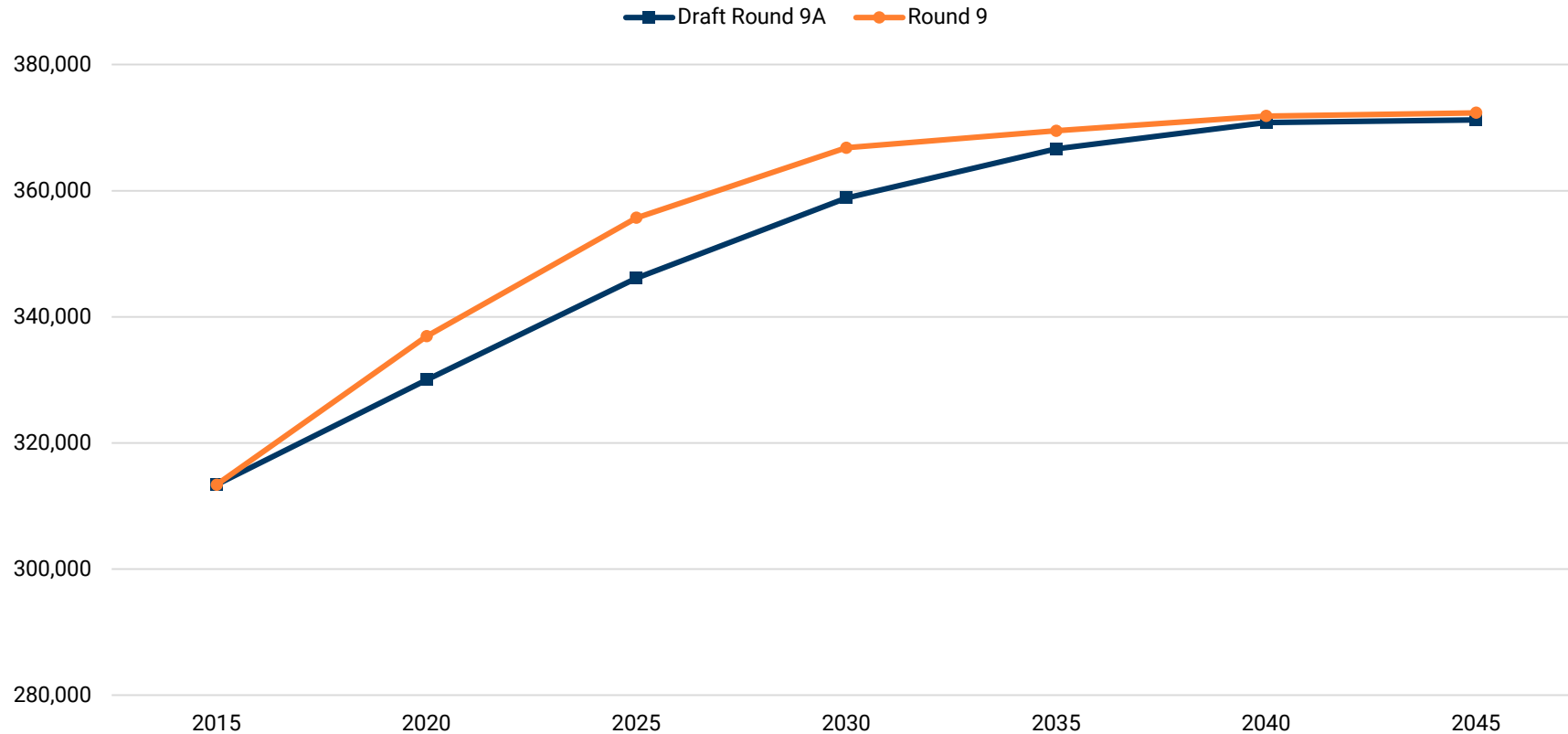
Howard County: Households



Households	2015	2020	2025	2030	2035	2040	2045	Chg	% Chg
Round 9A	111,753	118,936	126,992	133,388	138,062	139,802	139,932	28,179	25.2%
Round 9	111,753	121,499	130,432	136,125	138,782	139,686	139,851	28,098	25.1%
Chg	0	-2,563	-3,440	-2,737	-720	116	81	81	
% Chg	0.0%	-2.1%	-2.6%	-2.0%	-0.5%	0.1%	0.1%	0.3%	

Source: Local Jurisdictions (Draft Round 9A); Baltimore Regional Transportation Board (Round 9, June 2018); Baltimore Metropolitan Council.

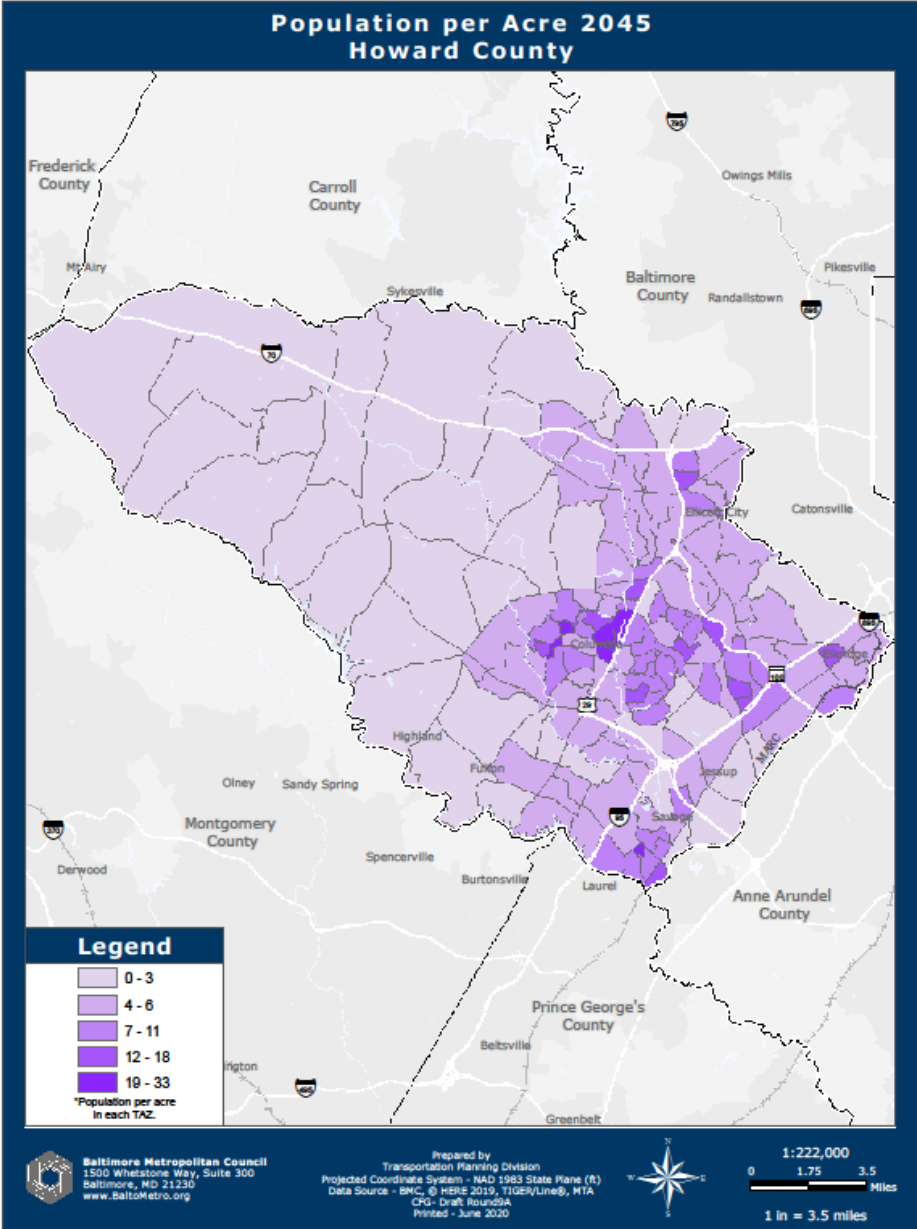
Howard County: Population



Population	2015	2020	2025	2030	2035	2040	2045	Chg	% Chg
Round 9A	313,359	329,986	346,147	358,856	366,641	370,823	371,222	57,863	18.5%
Round 9	313,359	336,920	355,696	366,818	369,499	371,846	372,358	58,999	18.8%
Chg	0	-6,934	-9,549	-7,962	-2,858	-1,023	-1,136	-1,136	
% Chg	0.0%	-2.1%	-2.7%	-2.2%	-0.8%	-0.3%	-0.3%	-1.9%	

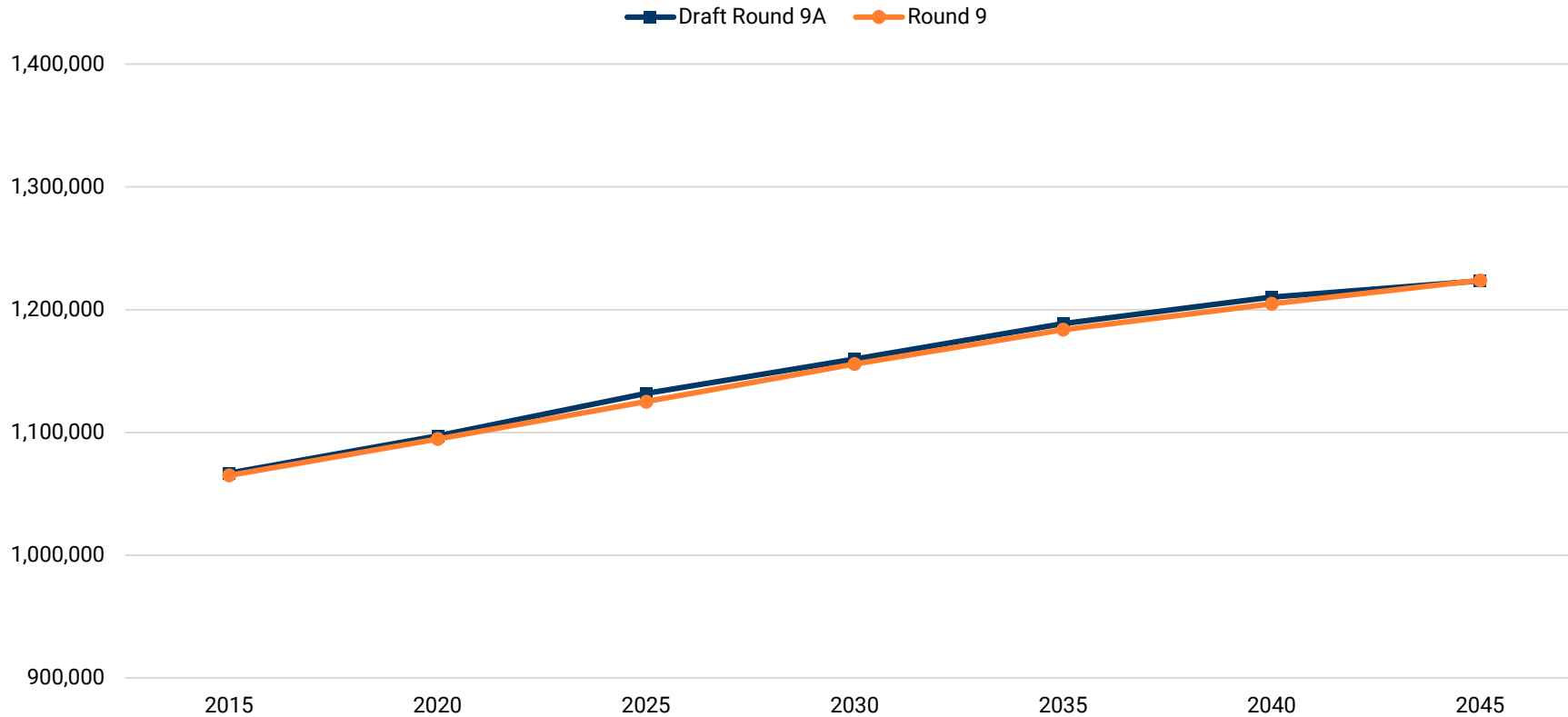
Source: Local Jurisdictions (Draft Round 9A); Baltimore Regional Transportation Board (Round 9, June 2018); Baltimore Metropolitan Council.

Howard County: Population Density, 2045 (Draft Round 9A)



Baltimore Region

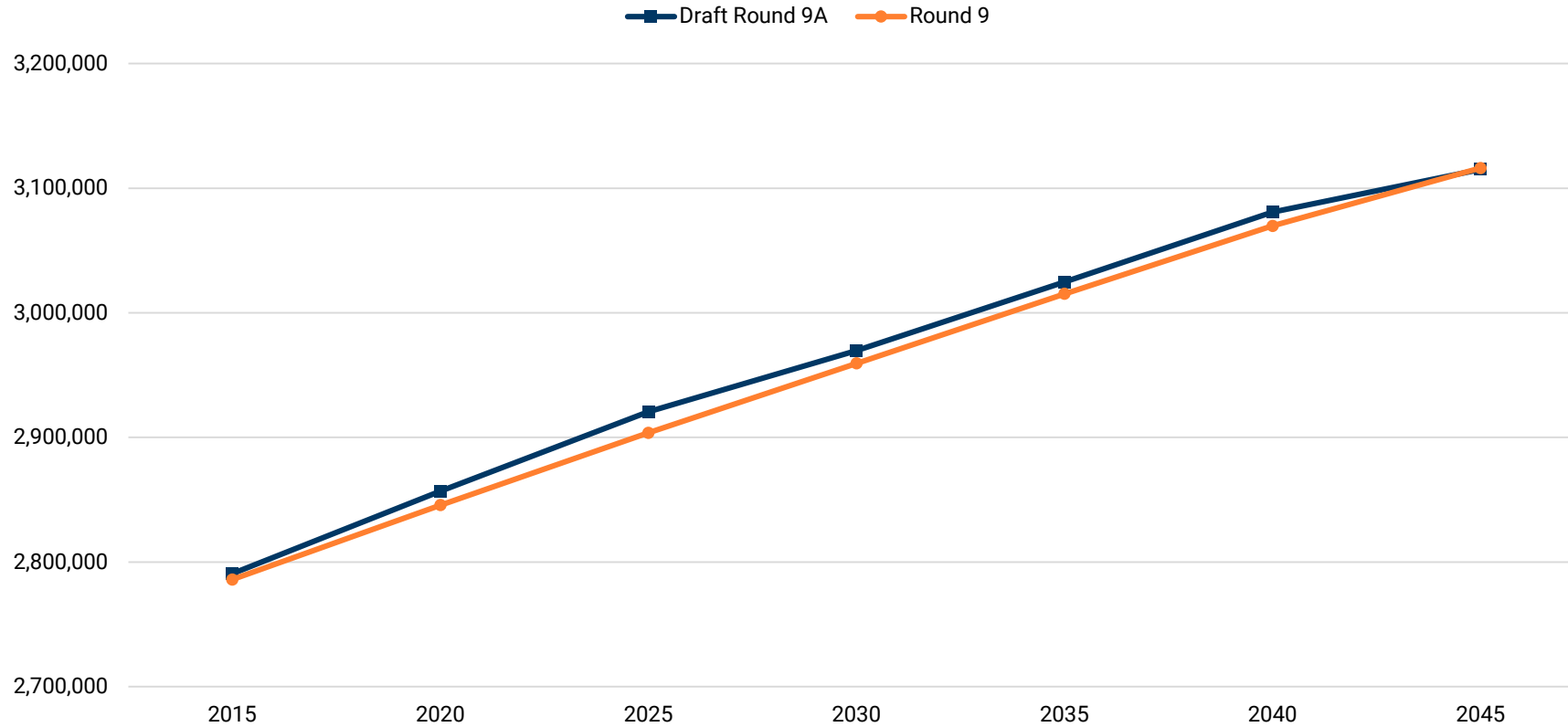
Baltimore Region: Households



Households	2015	2020	2025	2030	2035	2040	2045	Chg	% Chg
Round 9A	1,066,885	1,097,299	1,131,703	1,159,822	1,188,698	1,210,269	1,223,459	156,574	14.7%
Round 9	1,065,119	1,094,736	1,125,087	1,155,835	1,183,748	1,204,762	1,223,910	158,791	14.9%
Chg	1,766	2,563	6,616	3,987	4,950	5,506	-451	-2,217	
% Chg	0.2%	0.2%	0.6%	0.3%	0.4%	0.5%	0.0%	-1.4%	

Source: Local Jurisdictions (Draft Round 9A); Baltimore Regional Transportation Board (Round 9, June 2018); Baltimore Metropolitan Council.

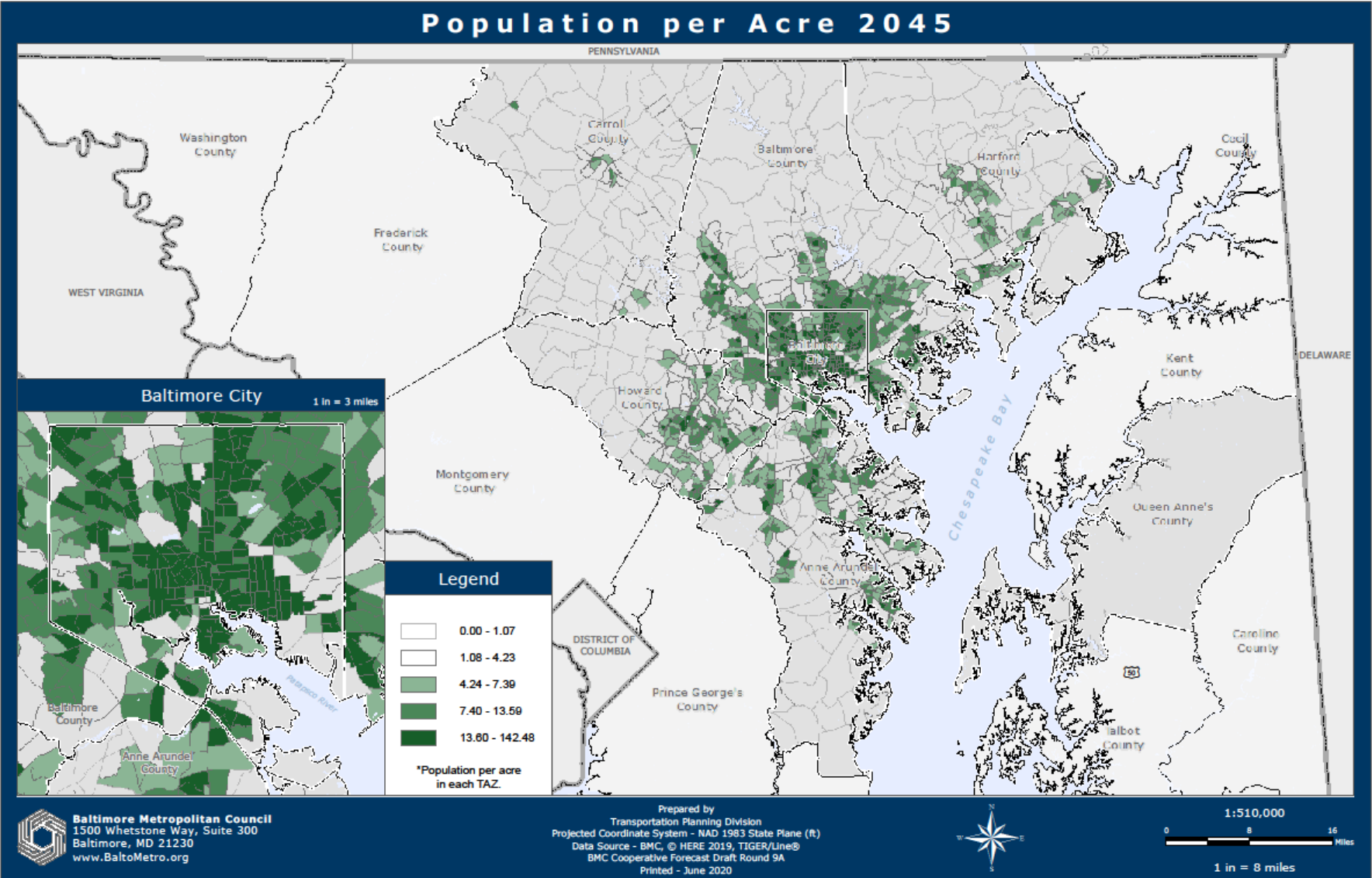
Baltimore Region: Population



Population	2015	2020	2025	2030	2035	2040	2045	Chg	% Chg
Round 9A	2,790,561	2,856,890	2,920,693	2,969,675	3,024,726	3,080,732	3,115,070	324,509	11.6%
Round 9	2,785,850	2,845,615	2,903,578	2,959,332	3,015,195	3,069,744	3,116,137	330,287	11.9%
Chg	4,712	11,276	17,115	10,343	9,530	10,988	-1,067	-5,778	
% Chg	0.2%	0.4%	0.6%	0.3%	0.3%	0.4%	0.0%	-1.7%	

Source: Local Jurisdictions (Draft Round 9A); Baltimore Regional Transportation Board (Round 9, June 2018); Baltimore Metropolitan Council.

Baltimore Region: Population Density, 2045 (Draft Round 9A)



For More Information

Shawn Kimberly, AICP | Senior Planner

410-732-0500 x1026 | skimberly@baltometro.org | www.baltometro.org

