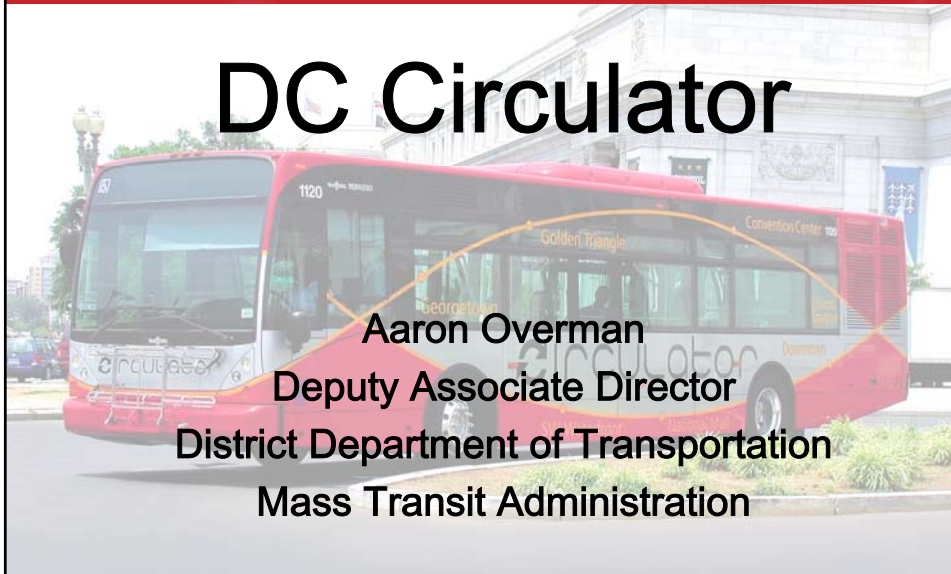




DC Circulator



Aaron Overman
Deputy Associate Director
District Department of Transportation
Mass Transit Administration



BACKGROUND
CURRENT ROUTES
SCHEDULE
FARES
RIDERSHIP
NEW ROUTES

Background—History

- Partnership between DDOT, WMATA and DCST.
- Service is owned by DDOT, managed by WMATA and operated under contract by First Transit.
- Began operation in July 2005.



Background—Characteristics

- Low floors, big windows, and multiple doors for easy on-and-off service.
- Links cultural, entertainment, and business destinations within DC's central core.



Original Routes

- Three routes:
 - Convention Center—SW Waterfront
 - Union Station—Georgetown
 - Smithsonian/National Gallery of Art Loop





Circulator

BACKGROUND
 CURRENT ROUTES
 SCHEDULE
 FARES
 RIDERSHIP
 NEW ROUTES

Schedule & Service Frequency

- Runs every 10 minutes
- Convention Center — SW Waterfront
 - 7:00 am - 9:00 pm daily
- Georgetown — Union Station
 - 7:00 am - 9:00 pm daily
 - Additional night service
- Smithsonian — National Gallery of Art Loop
 - 10:00 am - 6:00 pm weekends only

Fares



- Regular fare: \$1.00
- Senior/Disabled: \$0.50
- One-day pass: \$3.00 (sold at multi-meter locations)
- Monthly pass: \$40.00
- Metrobus or Circulator Transfer: Free
- DC Student Travel Card: Free
- Metrorail Transfer: \$0.50
- Paperless Transfers

Ridership

- Total monthly ridership: 200,000 to 300,000 (higher in summer months)
- Total ridership to date: > 8 million
- Union Station—Georgetown route carries bulk of passengers
- Farebox recovery: 20% in FY08



Ridership



- **Example: March 2009**
 - Ridership: 232,519
 - Revenue Hours: 9,644
 - Total Costs: \$712,467
 - Revenue: \$142,456

DC CIRCULATOR EXPANSION

- **Two new routes**
 - **Adams Morgan/Woodley Park- Downtown (via Columbia Heights)**
 - **Union Station-Navy Yard/National Ballpark (via Eastern Market)**
- **March 2009**



- BACKGROUND
- CURRENT ROUTES
- SCHEDULE
- FARES
- RIDERSHIP
- NEW ROUTES

Adams Morgan/Woodley Park--Downtown



Connect Woodley Park, Adams Morgan, Mt. Pleasant, Columbia Heights, U Street, Logan Circle, and downtown.

- Replaces and Expands Metro's route 98
- Connects to Union Station—Georgetown Circulator
- East-West connectivity an issue in this area; will connect Metro's Red and Green lines without going downtown first.
- Hours: 7:00 am – 12:00 am Sun – Thurs; 7:00 am – 3:30 am Fri & Sat

Union Station-Navy Yard/National Ballpark

- DC Circulator replaced the N22 WMATA Bus route.
- Connects Union Station, the US Capitol Visitor Center, Eastern Market, Barracks Row and the Navy Yard/Nationals Ballpark.
- Connects to Union Station—Georgetown Circulator
- North-South connectivity an issue in this area; will connect Metro's Red, Blue/Orange, and Green lines without going downtown first.
- Hours of Operation Weekdays 6am – 7pm (Extended service on Nationals' games days)



Next Steps...

- Conducting a Study to look at the future of the DC Circulator system:
 - Governance
 - SOPs
 - Future Vision
 - Expansion
 - Capital Plan
 - Public Involvement



Contact Information

Aaron Overman
Aaron.Overman@dc.gov
202-673-1736

www.dccirculator.com

www.ddot.dc.gov