



NATIONAL WATER INFRASTRUCTURE SUMMIT

Summit Highlights

About the Summit- Reinvest/ Rebuild/Revive



- Held on Tuesday, April 16th 10am-12pm EST in Washington, DC at the Ronald Reagan Building and International Trade Center
- Hosted by the Water for Jobs partnership which consists of 19 National Partners and 35 Water Environment Federation Member Associations

Summit Program



WATER PUTS AMERICA TO WORK

CAMPAIGN PARTNERS

19 National Partners & Summit Hosts

ARCADIS, American Public Works Association, American Water, American Water Works Association, Associated General Contractors of America, Association of Clean Water Administrators, Association of Metropolitan Water Agencies, Black & Veatch, CH2M Hill, GE Power & Water, Green for All, National Association of Clean Water Agencies, National Association of Water Companies, Stantec, United Water, Veolia Water, Water and Wastewater Equipment Manufacturers Association, Water Environment Federation, Xylem Inc.

35 Water Environment Association Member Associations representing 31,369 members

Alabama | Alaska | Arizona | Arkansas | California | Central States | Chesapeake | Federal WQA | Florida | Illinois | Indiana | Iowa | Kansas | Kentucky | Louisiana | Michigan | Mississippi | Montana | New Jersey | New York | North Carolina | Oklahoma | Oregon | Pennsylvania | South Carolina | Texas | Virginia | Washington | Wisconsin | Wyoming

THANK YOU TO OUR SPONSORS:

National Association of Clean Water Agencies
Water Environment Federation
American Water
Black & Veatch
National Association of Water Companies
Stantec
GE Water & Process Technologies
Veolia Water
Association of Metropolitan Water Agencies
American Water Works Association

For more information about Water for Jobs: Water Puts America to Work campaign visit www.waterforjobs.org or email waterforjobs@wet.org

NATIONAL WATER INFRASTRUCTURE SUMMIT

Reinvest | Rebuild | Revive

Tuesday, April 16, 2013
Ronald Reagan Building and International Trade Center
Rotunda Room
10:00 am - 12:00 pm

Hosted by the Water for Jobs Partners
This event is sponsored by:



Travel for the Summit: #WWSummit

SUMMIT PROGRAM

- 8:30 AM** Doors Open
- 9:00 AM** Check-in and Continental Breakfast
- 10:00 AM** Welcoming Remarks and Introduction, Cordell Samuels, President, Water Environment Federation
- 10:10 AM** Introduction of Moderator and Panelists, Ken Kirk, Executive Director, National Association of Clean Water Agencies
- 10:20 AM** Introductory Remarks by Moderator, John R. Bigelow, Senior Vice President of Business Services for American Water
- 10:30 AM** Panelists:
 - Brian Pallasch, CAE, Managing Director of Government Relations & Infrastructure Initiatives, American Society of Civil Engineers
 - George R. Schink, Ph.D., Managing Director and Principal, Navigant Economics
 - George Hawkins, General Manager, DC Water
 - Harlan Kelly, Jr., General Manager, San Francisco Public Utilities Commission
 - Howard Neukrug, Commissioner of the Philadelphia Water Department
 - Carter Strickland, Commissioner of the New York City Department of Environmental Protection
- 11:30 AM** Question and Answer
- 11:50 AM** Closing Remarks, Karen Pallasch, Chief Executive Officer, Alexandria Renew Enterprises
- 12:00 PM** Adjournment of Summit

INTRODUCING THE SPEAKERS

Moderated by:
 **John R. Bigelow**, Senior Vice President of Business Services, American Water

Panelists:
 **George Hawkins**, General Manager, DC Water

 **Brian Pallasch, CAE**, Managing Director of Government Relations & Infrastructure Initiatives, American Society of Civil Engineers

 **Harlan Kelly, Jr.**, General Manager, San Francisco Public Utilities Commission

 **George R. Schink, Ph.D.**, Managing Director and Principal, Navigant Economics

 **Howard Neukrug**, Commissioner of the Philadelphia Water Department

 **Carter Strickland**, Commissioner of the New York City Department of Environmental Protection

WATER FOR JOBS WATER PUTS AMERICA TO WORK

ABOUT THE WATER FOR JOBS CAMPAIGN

Launched by the Water Environment Federation, the Water for Jobs campaign has the support of 19 National Partners and 35 Water Environment Federation Member Associations representing more than 31,000 water quality professionals nationwide. Together, the partnership is raising awareness that investment in water infrastructure creates jobs, drives innovation and safeguard public health. We must have reliable and resilient water infrastructure systems for economic prosperity. We need your voice to make water investment a top national priority.

Official Hashtag for the Water for Jobs Campaign: **#waterforjobs**
Official Hashtag for the National Water Infrastructure Summit: **#WWSummit**

Learn how you can help us be a united voice for water at www.waterforjobs.org

Memorable Quotes from the Summit

“This partnership represents a new era of effective collaboration in our sector – we all share the same passion and vision and we have now charted the course to work together to create national awareness of the value of water and the need to make smart and sustainable investments in our infrastructure.”

-Cordell Samuels, WEF President



“Today local government and local ratepayers bear approximately 98% of the cost of clean and safe water infrastructure investment. The municipalities and private companies tasked with complying with the Clean Water Act are virtually alone in creating jobs.” **-Ken Kirk, Executive Director, NACWA**



Memorable Quotes from the Summit



“Much of the U.S. infrastructure was built more than a century ago and currently around 10% of these systems are at the end of their service life. If not addressed by 2020, this number could rise to 44%.” –**John R. Bigelow, Sr. Vice President of Business Services, American Water (Moderator)**



“When discussing the ASCE 2013 Report Card for America’s Infrastructure, “[the D grade] reflects that infrastructure is poor or at risk, [and] we have a real challenge.” -**Brian T. Pallasch, CAE, Managing Director of Government Relations & Infrastructure Initiatives, American Society of Civil Engineers (Panelist)**

Memorable Quotes from the Summit

“Without attention, failing infrastructure could result in more disruptions of service, threats to public health, the economy, the environment and quality of life. Rather than continuing to borrow from the future to fix the problems of today. We must run toward the problem and work together to find solutions.” When asked how many jobs water creates, he stated, *“all of them.”* - **George Hawkins , General Manager, DC Water (Panelist)**



“Investment in water and wastewater infrastructure has a larger positive economic impact on the U.S. economy than do other types of public infrastructure investment such as those in transportation and energy.” -**George Schink, Ph.D. of Navigant Economics (Panelist)**



Memorable Quotes from the Summit

“Failure is not an option, [we need water to survive] and a solid plan going forward is needed.” -**Howard Neukrug, Commissioner of the Philadelphia Water Department (Panelist)**



“It took an earthquake to gain his community’s attention but it shouldn’t take something that dramatic to expose our reliance on this precious resource.” -**Harlan Kelly, Jr., General Manager, San Francisco Public Utilities Commission (Panelist)**



Memorable Quotes from the Summit



“It’s a matter of tapping into reality by looking at what people value and showing how that connects to water.” -**Carter Strickland, Commissioner of the New York City Department of Environmental Protection (Panelist)**



“I know that you join with me in the belief that great communities need and deserve great water infrastructure and great water quality. One cannot exist without the other.” –**Karen Pallansch, CEO, Alexandria Renew Enterprises**

Watch the Archive Recording of the Summit!

The screenshot shows a web browser window with the URL www.windrosemedia.com/windstream/wef/. The page features the logo for "WATER FOR JOBS" with the tagline "WATER PUTS AMERICA TO WORK". The main heading is "NATIONAL WATER INFRASTRUCTURE SUMMIT".

Video

A video player displays a thumbnail for the "NATIONAL WATER INFRASTRUCTURE SUMMIT" with the subtitle "Reinvest | Rebuild | Revive" and the date "Tuesday, April 16, 2013 | Ronald Reagan Building, Rotunda Room, Washington DC". The video duration is 00:00.

Summit Sponsors

- [Water Environment Federation \(WEF\)](#)
- [National Association of Clean Water Agencies \(NACWA\)](#)
- [American Water](#)
- [Black & Veatch](#)
- [National Association of Water Companies \(NAWC\)](#)
- [Stantec](#)
- [GE Water & Process Technologies](#)
- [Veolia Water](#)
- [Association of Metropolitan Water Agencies \(AMWA\)](#)
- [American Water Works Association \(AWWA\)](#)

Water for Jobs on Twitter

Water for Jobs #W4JSummit

- [BAFuture](#) RT @NACWA Heard at the #W4JSummit: \$1 spent on water infrastructure add \$3 to the GDP - George Shinck, Navigant Economics 5 days ago · reply · retweet · favorite
- [amwater](#) Check out this archive of the National Water Infrastructure Summit! #W4JSummit waterforjobs.org/eventsandmeet... 5 days ago · reply · retweet · favorite

Resources

- [Home Water for Jobs](#)
- [Act Now](#)
- [Contact Your Legislator](#)
- [Join us on LinkedIn](#)
- [Follow the conversation on Twitter](#)
- [Subscribe on YouTube](#)

<http://www.windrosemedia.com/windstream/wef/>

Twitter Engagement

Official Twitter Handle for Water for Jobs Campaign: @Waters4WEF

The image shows a screenshot of a web browser displaying the Twitter profile page for the account @Waters4WEF. The browser's address bar shows the URL https://twitter.com/Waters4WEF. The page features a navigation bar with 'Home', 'Connect', 'Discover', and 'Me' options. On the left side, there is a sidebar menu with 'Tweets', 'Following', 'Followers', 'Favorites', and 'Lists'. The main content area displays the profile header for Amanda Waters (@Waters4WEF), including her profile picture, bio, and the campaign slogan 'WATER PUTS AMERICA TO WORK'. Below the header, statistics show 735 tweets, 335 following, and 283 followers. The 'Tweets' section lists several recent tweets, including one from Amanda Waters about a summit archive recording, a tweet from BC Water News about a sludge recycling plant, another from Amanda Waters about infrastructure funding, a tweet from CanadianWaterSummit about climate change, and a tweet from Veolia ES UK about waste recycling.

Tweets

- Following
- Followers
- Favorites
- Lists

Who to follow · Refresh · View all

- Pacific Islands NPS @PacificNPS Follow
- New York Magazine @NYMag Follow
- Environment-AECOM @Environ... Follow

Trends · Change

- #AfterEarthDay Promoted
- #UCL
- #BNEF2013
- #QuoteYourTeacher
- #MentionSomeoneYouDoNotLike
- #InitialsOfSomeoneYouCareAbout
- Bayern
- Newt Gingrich
- Barcelona
- Barca

Profile Header:

WATER FOR JOBS

Amanda Waters
@Waters4WEF

Water Puts America to Work. Join the conversation with #WaterforJobs
*Disclaimer: RTs, links and follows are not endorsements.
Alexandria, VA · waterforjobs.org

WATER PUTS AMERICA TO WORK

735 TWEETS | 335 FOLLOWING | 283 FOLLOWERS

Tweets

- Amanda Waters** @Waters4WEF · 4h
ICYMI: Watch the #w4JSummit archive recording #waterforjobs
tinyurl.com/d36sqdu
Expand
- BC Water News** @BCWaterNews · 6h
Senators celebrate Earth Day opening of sludge recycling plant
fb.me/2DRoa3xQ8
Retweeted by Amanda Waters
[View summary](#)
- Amanda Waters** @Waters4WEF · 6h
Digging a deeper hole: failure to fund infrastructure exacerbates long-term fiscal crisis #NewJersey via @njspotlight
tinyurl.com/brvsdmb
Expand
- CanadianWaterSummit** @CdnWaterSummit · 7h
How will water and agriculture be impacted by the changing climate? Find out at #WaterSummit 2013 ow.ly/jTwtO #canH2O
Retweeted by Amanda Waters
Expand
- Veolia ES UK** @Veolia_ES_UK · 22 Apr
Each year the world produces 4bn tn of waste bit.ly/v-wrvid
We're turning #waste into a resource 365 days a year #EarthDay
Retweeted by Amanda Waters

Official Hashtag for Summit: #W4JSummit

- 83 Total tweets; 128 retweets
- 93,744 Potential impressions
- 34 Mentions
- Grew 17 new followers today
- 11 Retweets
- 9077 Impressions
- 5 Retweets
- 9072 impressions

Popular tweet: Great communities need & deserve great water infrastructure & quality, one cannot exist w/o the other K. Pallansch @AlexRenewCEO #W4JSummit

Popular tweet: @EPAgov estimates over the next 20yrs. \$335B needed for drinking water infra, \$298B needed for #wastewater infra (total 638B) #W4JSummit







NATIONAL WATER INFRASTRUCTURE SUMMIT

APRIL 16, 2013

**RONALD REAGAN BUILDING AND INTERNATIONAL TRADE
CENTER**



WATER PUTS AMERICA TO WORK

Updates on Stormwater Issues and Activities

Seth Brown, P.E.

WEF Stormwater Program and Policy Manager

WashCOG

May 3, 2013



Overview

- **Big Picture**
- **Regulation Updates/Overview**
- **Larger Trends in Sector**
- **WEF Activities**

Big Picture: The Rise of Nonpoint Source Pollution



Point Source vs. **Nonpoint Source**

Water Pollution

William Ruckelshaus, *A New Shade of Green*, The Wall Street Journal, April 17, 2010.

Big Picture: EPA Stream Assessment

Key Findings: Overall Biological Condition

- 55% of the nation's river and stream miles do not support healthy populations of aquatic life, with phosphorus and nitrogen pollution and poor habitat the most widespread problems
- 23% of river and stream miles are in fair condition.
- 21% are in good condition and support healthy biological communities
- Numbers are worse in the Mid-Atlantic

80% of stream miles are small, wadable, headwater streams

Regulation Update/Overview

EPA Stormwater Rulemaking – Status

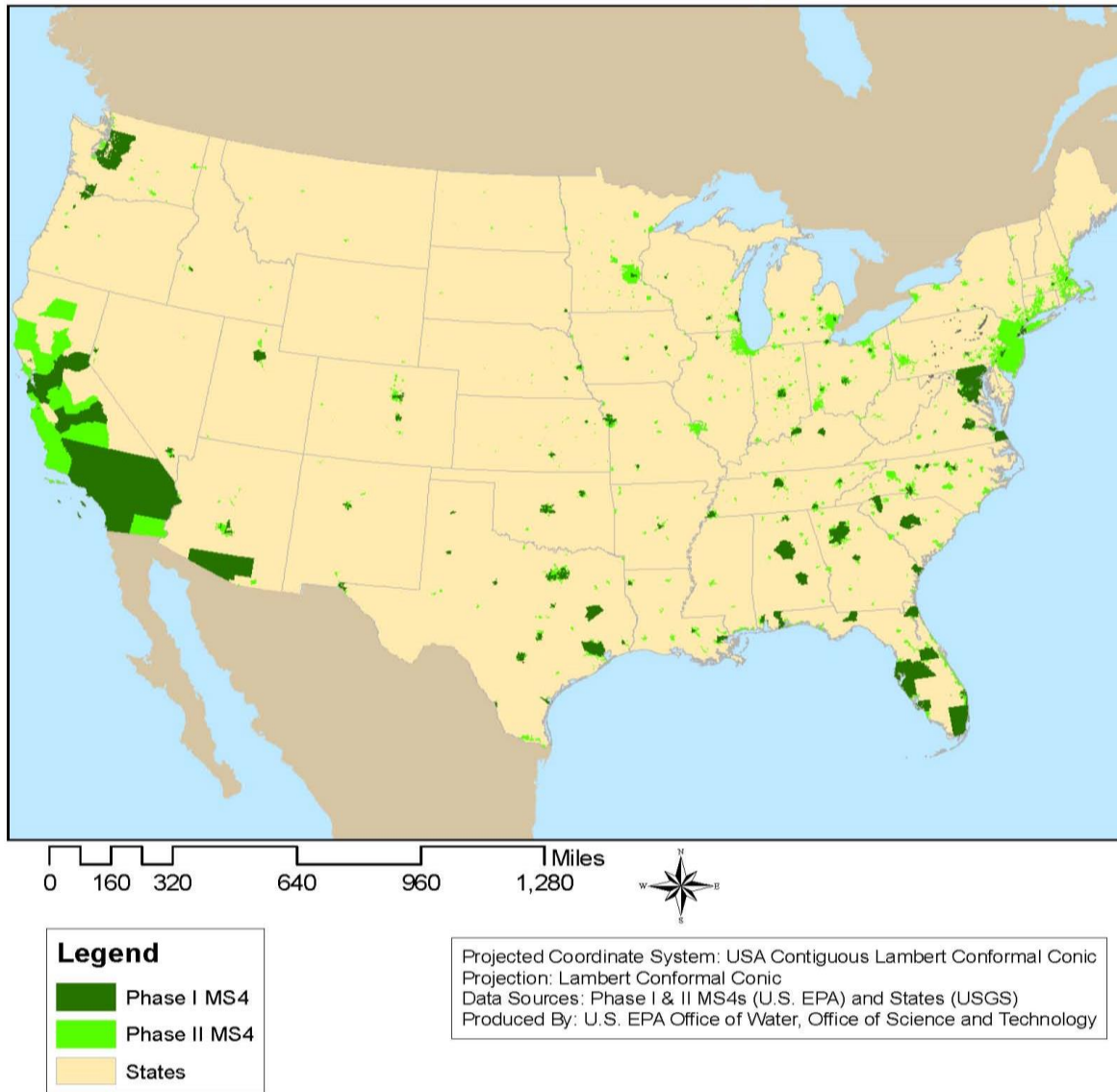


- Proposed rule to be released June 10, 2013
 - Currently going through options selection process
 - Not at Office of Management and Budget yet (expect a 90-day review period)
 - Has to go through internal review as well
 - Add things up – will likely miss the proposal release date...again
- Final rule to be released December 10, 2014

National Stormwater Rulemaking

- December 2009 -EPA announced proposed rulemaking to:
 - Strengthen NPDES stormwater program
 - To further reduce impact of long-term stormwater discharges from developed sites
 - In reaction to Nat. Res. Council report stating program is ineffective
- Expected elements of the proposed rule?
 - Expand MS4 coverage/extents
 - Establish performance standards for new development and redevelopment
 - Require retrofit plans for some urban areas (Probably not!)
 - Separate program for transportation systems expected (TS4)
 - Address retrofit requirements for existing development
 - Additional requirements for sensitive waters

National Regulated Areas (Phase I & II MS4s)

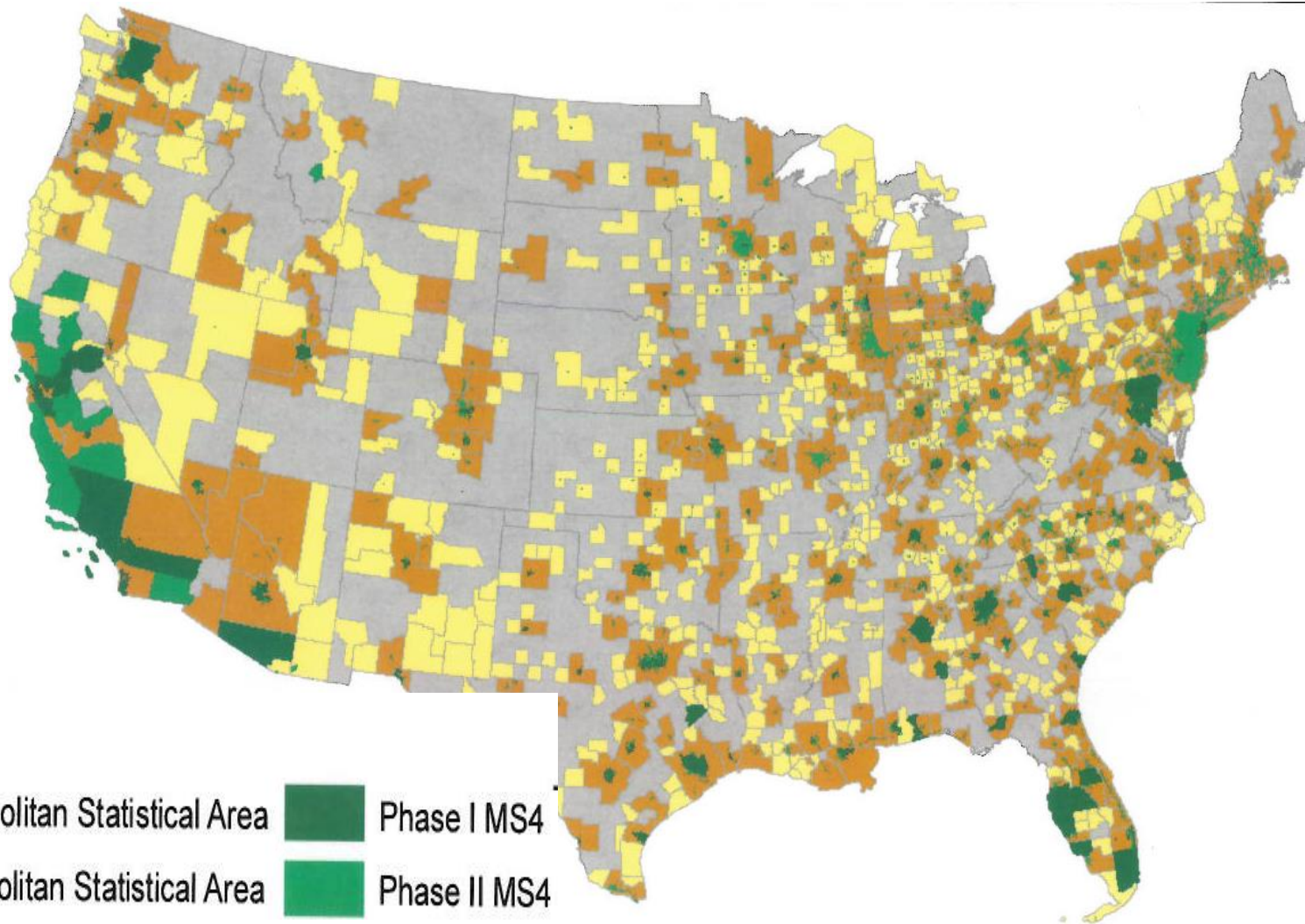


Currently we regulate:

7,464 MS4s

- Phase I: 750 MS4s
- Phase II: 6714 MS4s
- Most MS4 are regulated based on the Urbanized Area (UA) boundary set by Census 2000. However, at least 12 states regulate based on the jurisdictional boundaries (JB) of the MS4.
- 9 States have expanded coverage to all cities with population greater than 10,000.
- Washington state regulates all cities within urban growth boundary.
- New Jersey regulates all MS4s

2010 Combined Statistical Areas & Regulated MS4s



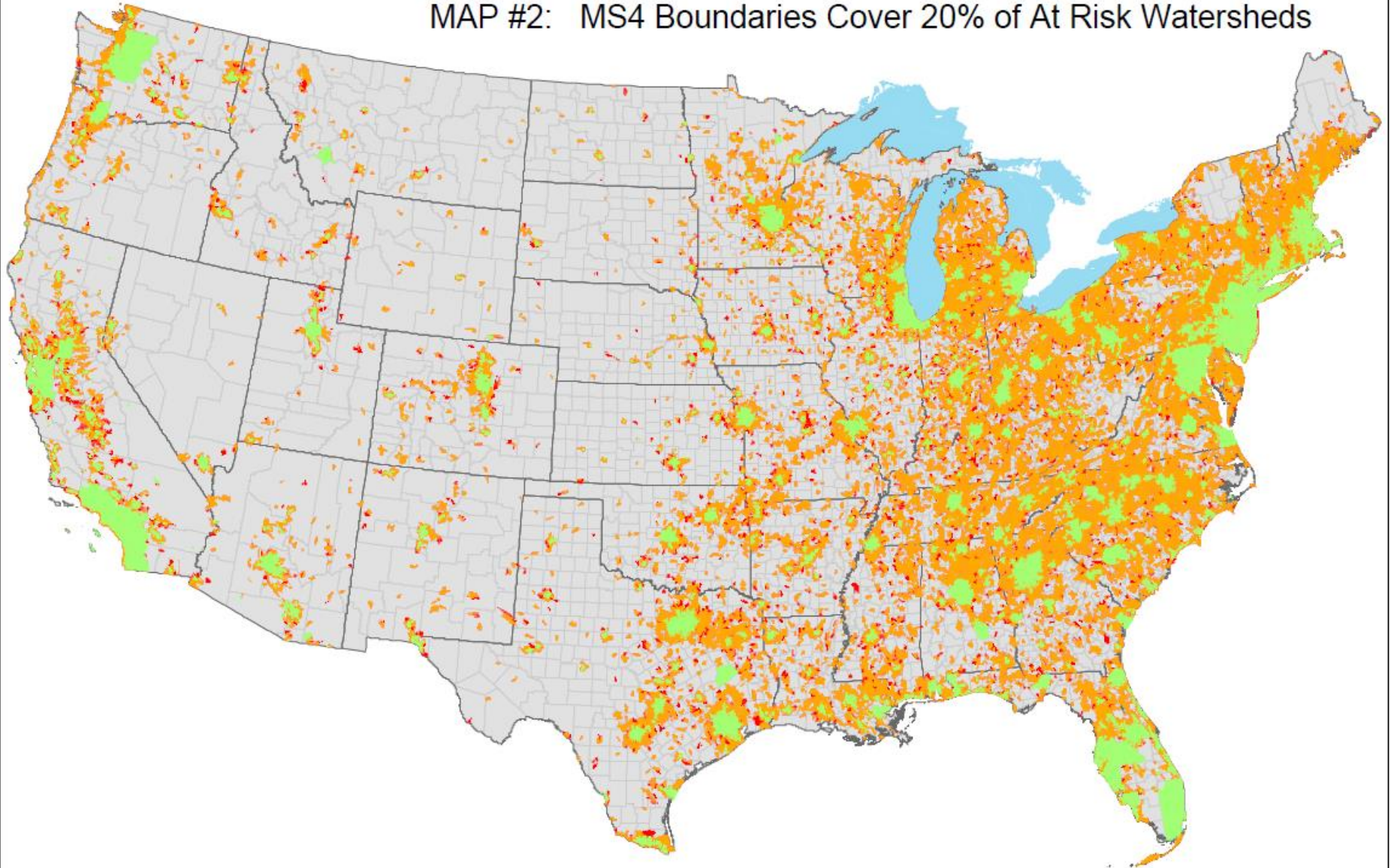
Legend

- Metropolitan Statistical Area
- Micropolitan Statistical Area
- Phase I MS4
- Phase II MS4



Regulated MS4 Boundaries & At Risk HUC 12 Watersheds

MAP #2: MS4 Boundaries Cover 20% of At Risk Watersheds



2010 MS4 Boundaries At Risk Watersheds (>5% Impervious) 2010 At Risk Watersheds (>5% Impervious) 2040



EPA Stormwater Rulemaking – Expected Elements

- Expand MS4 extents
 - Could expand to HUC 10 or HUC 12 watershed boundary
 - Could expand to jurisdictional boundaries (instead of part of a county, include the whole county, etc.)
 - Could expand to include urban cluster areas (exurbs)
 - Will be an expansion of regulated universe due to 2010 census results – not related to rulemaking

EPA Stormwater Rulemaking – Expected Elements

- New Development Standard
 - Expected to be retention-based standard
 - Likely to be between 80th and 95th percentile
 - Will be tied to MS4 programs as well as sites beyond outside of MS4 boundaries
 - Will have a minimum size threshold
 - Think of the Construction General Permit program
 - There will likely be a predevelopment option (match or mimic existing hydrology for predeveloped condition)
 - There will be a water quality backstop – meaning that if retention cannot be met, water quality treatment must be provided for the standard amount (85th percentile, etc.)

EPA Stormwater Rulemaking – Expected Elements

- Redevelopment Standard
 - Expected to be retention-based standard
 - Expected to be less than new development standard
 - If new development is 90th then redevelop will be 85th
 - New “green infrastructure plan” option has arisen
 - If GI plan is deemed to be “equivalent” to standard, may be allowed to be used in permits
 - May be a better/easier way to address in terms of Integrated Planning and Permitting efforts
- Retrofit Requirement
 - Likely to be removed – covered under TMDL program?

EPA Stormwater Rulemaking – Expected Elements

- TS4 program for DOTs
 - Respects the difference in linear construction/projects
 - Expected to address principal arterial systems or 4-lane and above
 - Will use same performance standards, but different minimum measures
- Other issues:
 - Public comment review period expected to be 90 days
 - Implementation window likely to be 3-5 years
 - Equivalency
 - Sensitive waters (targeting Chesapeake Bay likely)
 - Inclusion of combined sewer systems into MS4 programs?



Flexibilities

Performance Standards (Cont'd)

- Could accommodate site constraints (including water rights laws)
 - Managed through treatment
 - Off-site mitigation
 - Payment-in-lieu
 - Banking or trading programs
- Allow watershed plans that control pollutants/flows
- Would credit alternative programs that are better suited to their needs, but that are as protective as the national standard
- Allow phased implementation
- Allow sites to do their own analyses based on site-specific information
- Allow alternative green infrastructure plan in-lieu-of a new and/or redevelopment standard



Benefits of a Proposed Stormwater Rule

Water-Based Benefits



Improved recreational, aesthetic and non-use values



Lower drinking water treatment costs



Lower dredging costs for navigational channels



Reduced siltation of water storage reservoirs



Reduced downstream flooding damage



Groundwater recharge



Small stream erosion and water quality impacts

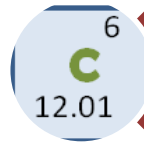
Vegetation-Based Benefits



Improved air quality and reduced human health impacts



Higher off-site property values associated with green infrastructure



Carbon uptake by plants



Reduced energy use by buildings and associated air quality and carbon footprint benefits

2002 Stormwater TMDL Memo

- Numeric WQBEL
 - Should be consistent with NPDES permit conditions
 - BMPs to be used when infeasible to calculate numeric WQBEL
- Aggregating Loads
 - Stormwater discharges from multiple point sources expressed as a single categorical wasteload allocation (WLA)
- Pollutant Surrogates
 - No mention of surrogates
- Designation Authority
 - Regulated stormwater discharges must be included in WLA
 - Unregulated stormwater discharges (i.e., nonpoint) may be included in LA

EPA's November 2010 Memo

- Provide numeric water quality-based effluent limitations in NPDES permits for stormwater discharges
- Disaggregate stormwater sources in WLAs
- Use surrogates (e.g., runoff volume) for pollutants in TMDLs
- Designate additional stormwater sources to regulate
- Compliance schedules
- Increase accountability and enforceability
- Current status – memo pulled back, now at OMB for review, schedule unknown

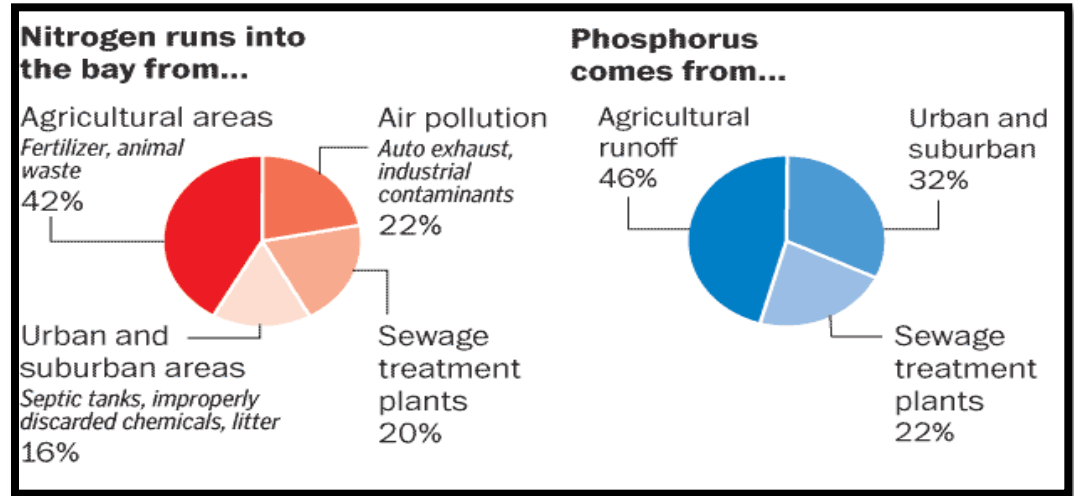
Stormwater TMDLs – Accotink Creek

- Located in Fairfax County, Virginia (DC metro area)
- Impairment for benthic health linked to sediment as pollutant stressor (sediment TMDL originally)
- EPA Region III took over TMDL and tied flow to impairment through use of surrogate approach
 - Results would require 48% reduction of 1-year, 24-hour storm

Stormwater TMDLs – Accotink Creek

- Fairfax County/VDOT sued EPA and won case
 - Judge stated that flow is not a pollutant, therefore couldn't be limited
- May limit surrogate approach in TMDL – many flow-based TMDLs are pending now – this may impact these
- Some claim this ruling calls into question the ability to regulate flow even under NPDES program
- EPA did not appeal the case
 - They believe the case is contained within the TMDL program
 - They believe the case is geographically contained (to Virginia)

Chesapeake Bay TMDL



High costs spurring interest in:

- Water quality trading
- Public/private partnerships (P3's)
- Cost-efficiencies

Funding Challenges

- Costs for Chesapeake Bay TMDL:
 - State of Virginia projected cost of \$10B (Aqua Law, 2010)
 - Estimated to be \$700/household/year for next 15 years
 - Fairfax County, VA - \$900M
 - Montgomery County, MD - \$1.8B
- D.C. spending \$1.8B on CSO tunnels
- Costs for Urban Retrofit
 - \$150K-\$300K per impervious acre (Montgomery Co.)

Larger Trends in Sector



Green Infrastructure

White House Green Infrastructure Meeting

- All day meeting on September 20, 2012
- Hosted by White House Council on Environmental Quality (CEQ) and EPA
- 80 participants from Public, Private and NGO
 - WEF staff and volunteers included
- WEF Exec. Dir. Jeff Eger moderated a panel on barriers/benefits to GI implementation
- Summary report due

Water Quality Trading

- Can water quality/nutrient trading help off-set costs?
 - NPS pollution treatment is up to 65 times cheaper than point source protection (Bacon, 1992)
 - Much hype, but few real results (so far)
 - Ohio River Trading Program
 - Renewed interest in Chesapeake Bay states on nutrient trading
 - Ches Bay Trading & Offset Workgroup
 - RPI Nutrient Trading Report
 - 80% cost-savings w/MS4 included in P-NP trading

Stormwater Utilities – Fee or Tax?

Stormwater Utility Legal Issues

- Fed gov't still pushing back on this legally
 - Washington State, Georgia
- Some states still view stormwater management fees as a “tax”, thus striking down or eliminating
 - Baltimore is a good example...
 - Michigan and others dealing with this, too

Funding – Alternative Sources

- Is there a role for the private sector in stormwater?
 - Public private partnerships (PPPs) to provide turn-key stormwater program services?
 - “Design-build” for stormwater?
 - Philadelphia credit program
 - Increased stormwater fee rates coupled with credit program for controls built on site up to 100% has generated great interest in program
 - Spurring growth in green design and construction
 - City will work with property owner to provide technical assistance

Funding – Alternative Sources

Stormwater Volume/Retention Trading

- Does the Washington, D.C. stormwater runoff volume/retention market make sense?
 - Market for Stormwater Retention Credits (SRCs)
 - DC Dept. of Environment will administer program
 - SRCs to be renewed annually (more flexibility)
 - Multiple site retention will lead to greater volumetric control
 - Will drive more GI in less affluent areas (property costs) and will bring more protection to vulnerable waters

Stormwater Legal Cases

Supreme Court Cases

- L.A. County vs. NRDC – water transfer rule upheld
- Logging road case – Silviculture not intended to be permitted as industrial activity
- What does this point to?
 - Stormwater is a nascent and evolving field
 - Considering to update/modernize the CWA



DC DOE MS4 Permit

- Viewed as a template for the future
- Phase I MS4 Permit issued by EPA Region 3
- New and Redevelopment SW Controls
- Retrofit Program for Existing Discharges
- Tree Canopy coverage to increase (from 35% to 40%)
- Green Roof Projects
- Prevent discharge of more than 100,000 pounds of trash/year into the Anacostia River



WEF Activities in Stormwater

Stormwater at WEF

- Established Stormwater Committee
 - Developed Stormwater Strategic Plan
- Developing coalitions with other groups
- Member associations in the region hosting stormwater events
 - Chesapeake WEA hosting a 1-day seminar on May 23
 - Virginia WEA hosted 1-day seminar on March 19
- Driving innovation in the sector



The Inaugural Stormwater Symposium

July 18 – 20, 2012

Sheraton Baltimore City Center
Baltimore, Maryland, USA

Stormwater Symposium 2012

- Baltimore, July 18-20, 2012
- Partnered w/CWEA
- 400 attendees
- Multiple workshops
- Concurrent tracks
 - Topics include:
 - Policy, GI Costs/Benefits, SWM BMP Performance, Funding, Permitting / Codes- Standards, Public Outreach
- Panel Discussions, Keynote Speakers
- Partners / Supporters
 - EPA, American Rivers

 **Water Environment Federation**
the water quality people™

CHESAPEAKE



CHESAPEAKE WATER ENVIRONMENT ASSOCIATION



Water Environment Research Foundation
Collaboration. Innovation. Results.

This conference is held by the Water Environment Federation in cooperation with the Chesapeake Water Environment Association, American Rivers, and the Water Environment Research Foundation.

www.wef.org/Stormwater2012

 **Water Environment Federation**
the water quality people™



Stormwater Congress

October 5-9

 **weftec**[®] 2013
the water quality event™

Stormwater Congress 2013

- Focused programming on SW at WEFTEC
- Four concurrent tracks
- All aspects of stormwater, wet weather, and related issues
- www.weftec.org/stormwatercongress

Current/Recent WEF Activities

- Ongoing Publications on
 - Stormwater Utilities – due out in June, 2013
 - Green Infrastructure Practitioner Guide – May, 2014
 - Water Quality Trading – July, 2014
- Hosting a 2-day workshop on Low Impact Development Design / GI Design Competitions
 - May 16-17, 2013 at EPA HQ
- Forming a workgroup to investigate a national stormwater product testing and verification program (STEPP)

Water Quality Trading



- EPA, WRI and WEF - WQ Trading Workshop
 - Policy/case study updates
 - Hot spots, baselines, stormwater/MS4
 - www.wef.org/waterqualitytrading
- WEF WQT publication in development



The Stormwater Report



- Free e-newsletter that comes out on first Thursday of every month
- News, events and WEF-focused info on stormwater
- Was launched in April, 2011 - circulation now up to over 15,000
- Go to **<http://stormwater.wef.org>** or email **ktwigg@wef.org** for more information or to sign up

Green Infrastructure



WEF- EPA Partnership on Green Infrastructure

- Technical aspects of stormwater rulemaking (“Barriers/Solutions”)
- Meeting on GI/LID at SW Symposium
 - Focus on cost-effectiveness and performance of GI/LID vs. traditional SWM
 - Included OMB, CEQ, and EPA



Updates on Stormwater Issues and Activities

Seth Brown, P.E.

WEF Stormwater Program and Policy Manager

WashCOG

May 3, 2013