

TRAVEL REBOUND IN 2022 – A QUICK LOOK AT 2022 THANKSGIVING TRAFFIC

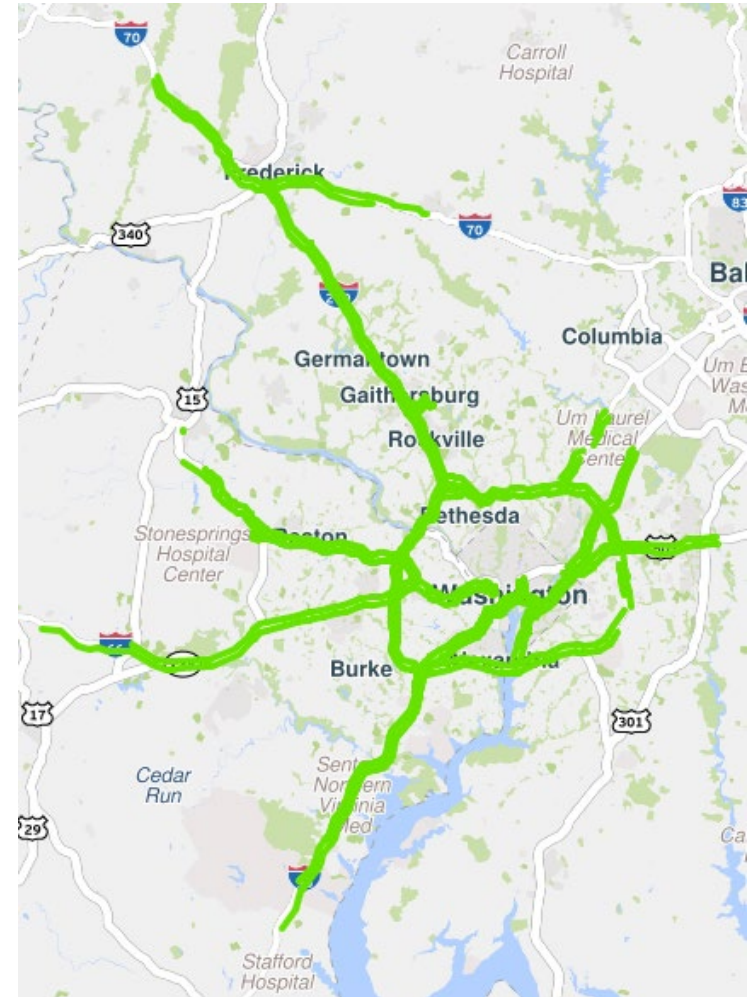
Jan-Mou Li, Ph. D.
TPB Transportation Engineer

Systems Performance, Operations, and Technology Subcommittee (SPOTS)
March 2, 2023

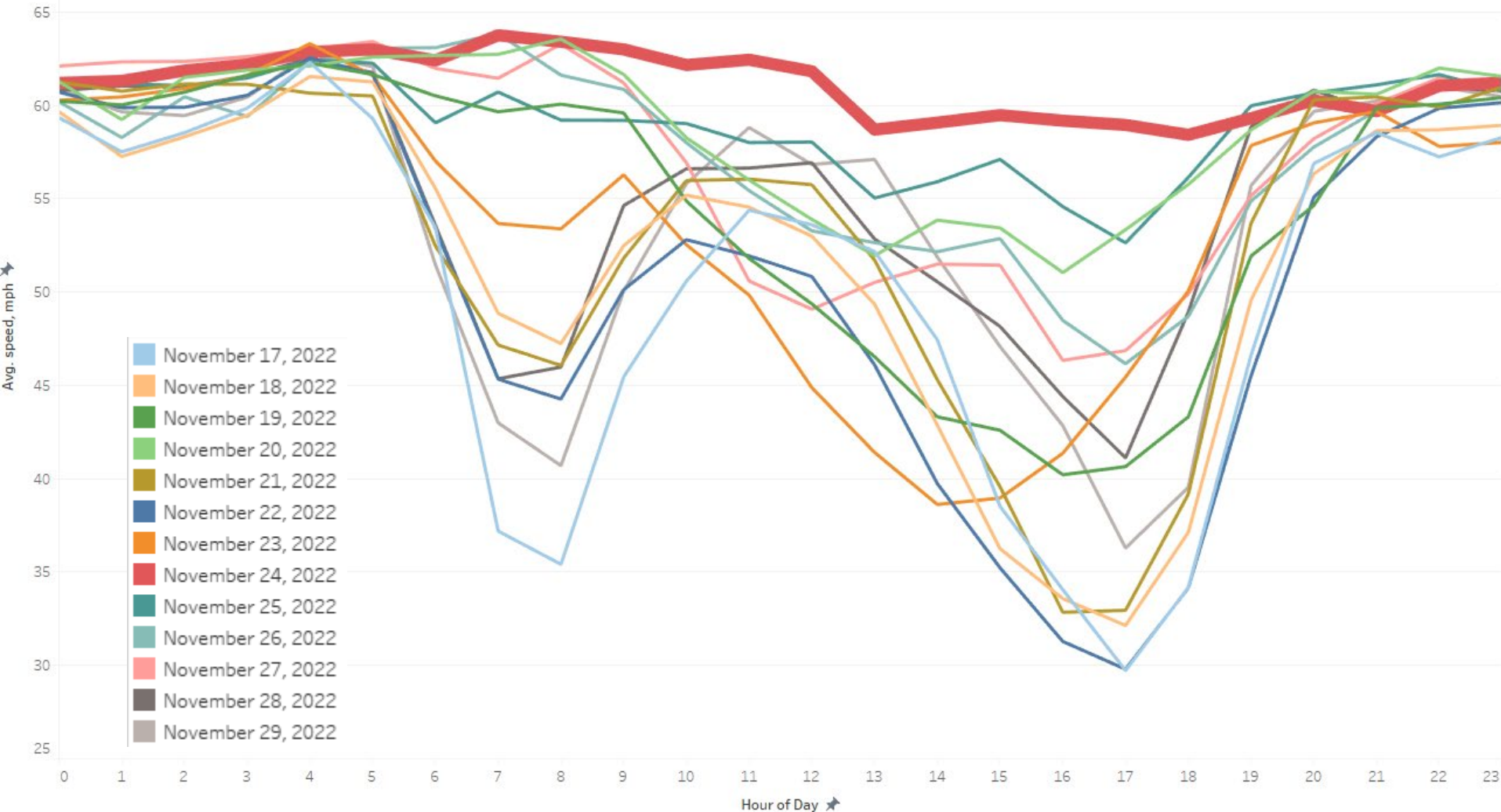


Scope of the Analysis

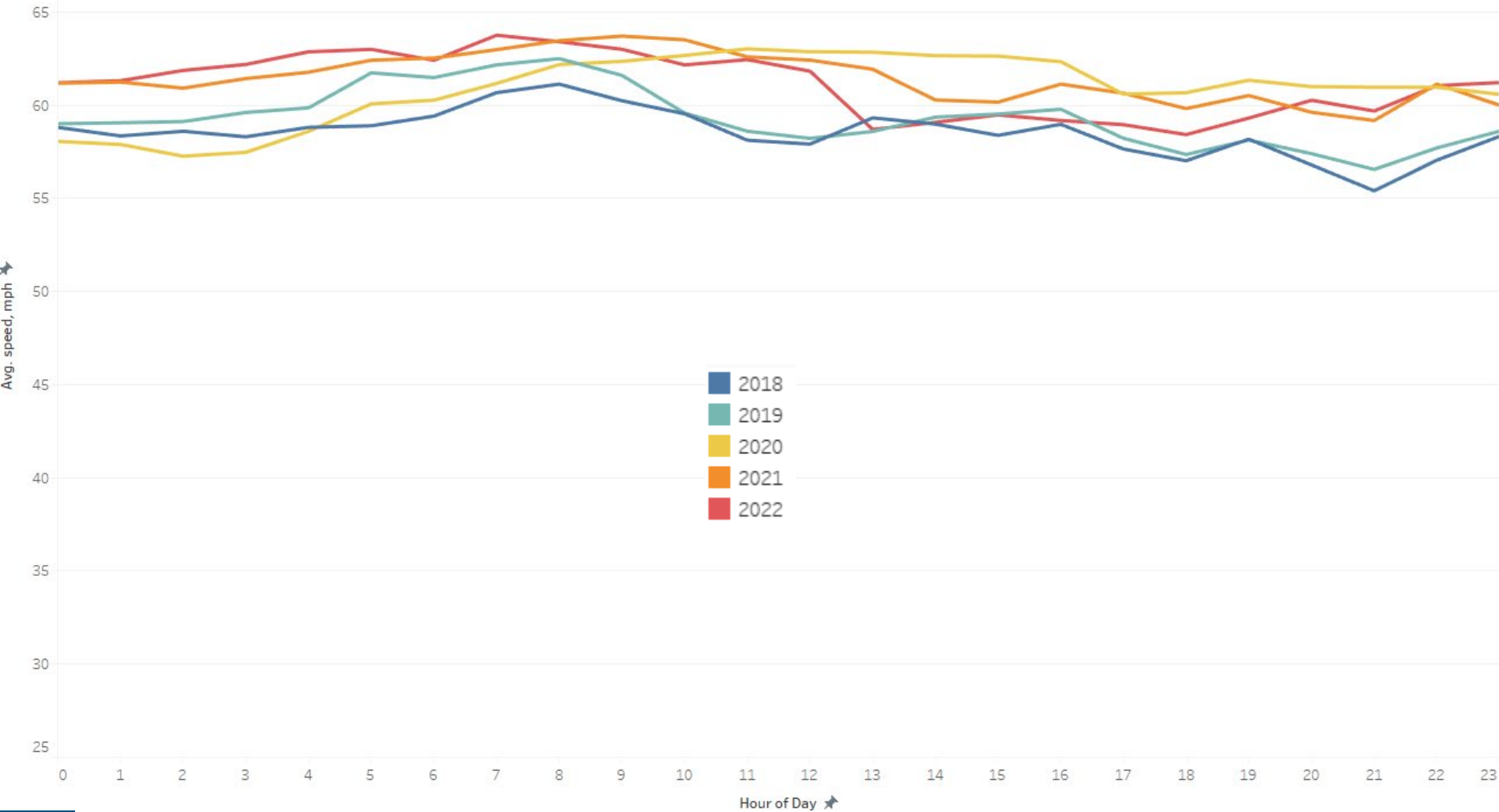
- Freeways in the National Capital Region
- Several days before and after November 24, 2022 – The Thanksgiving Day
- Average travel speed
- Comparisons
 - To average Tuesday and Wednesday
 - From 2018 throughout 2022



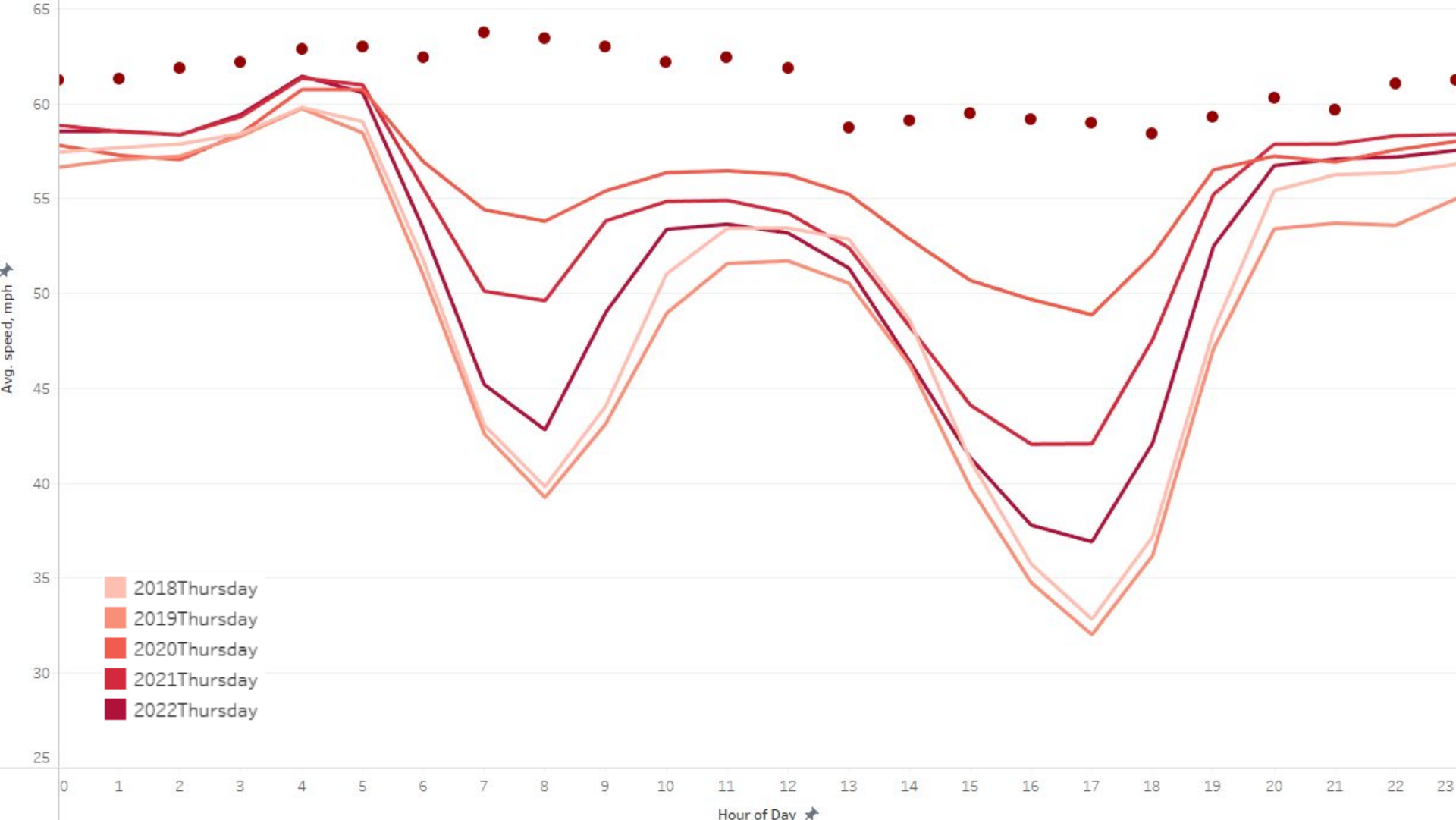
Days before and after the Thanksgiving



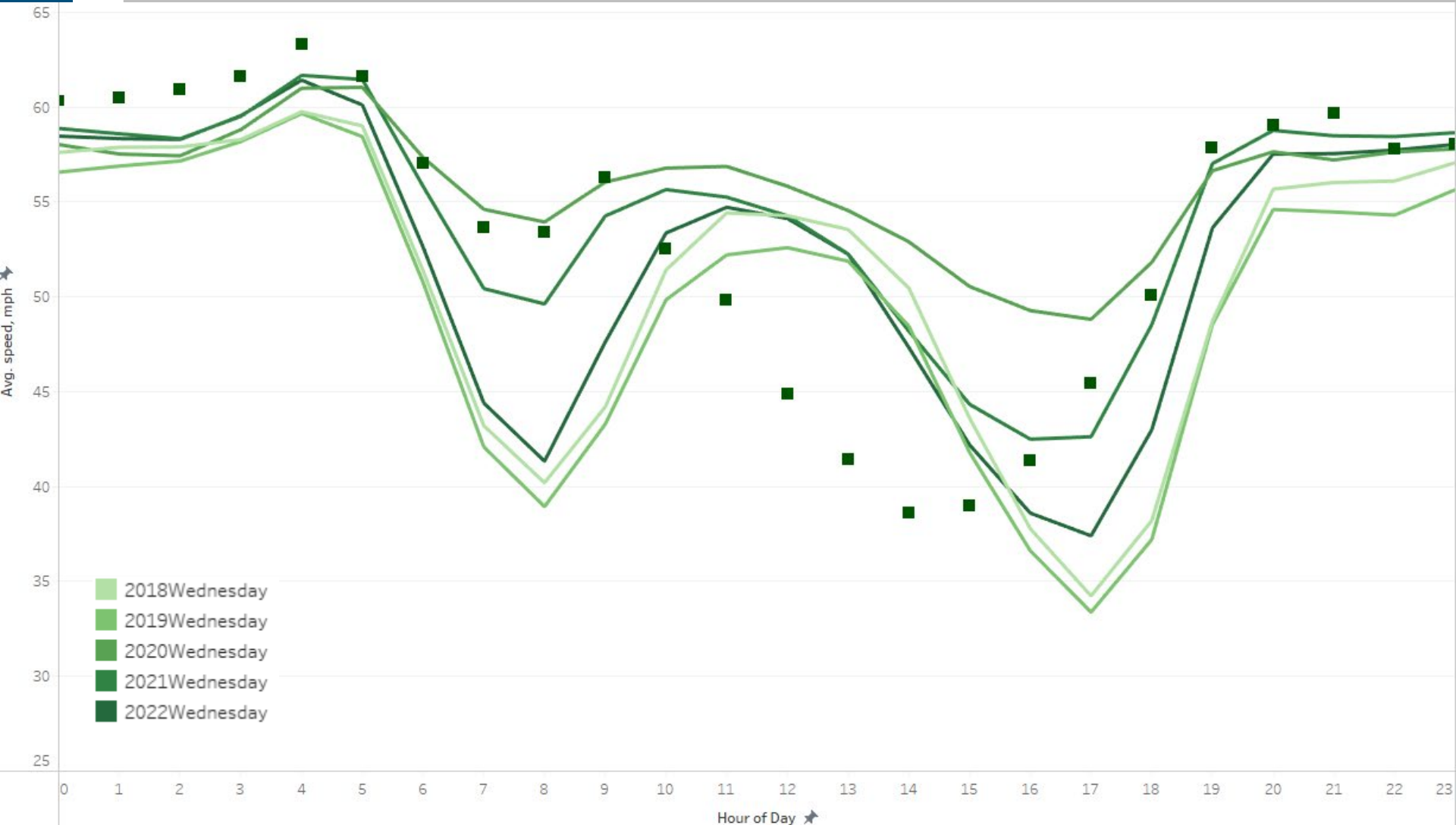
On Thanksgiving Days



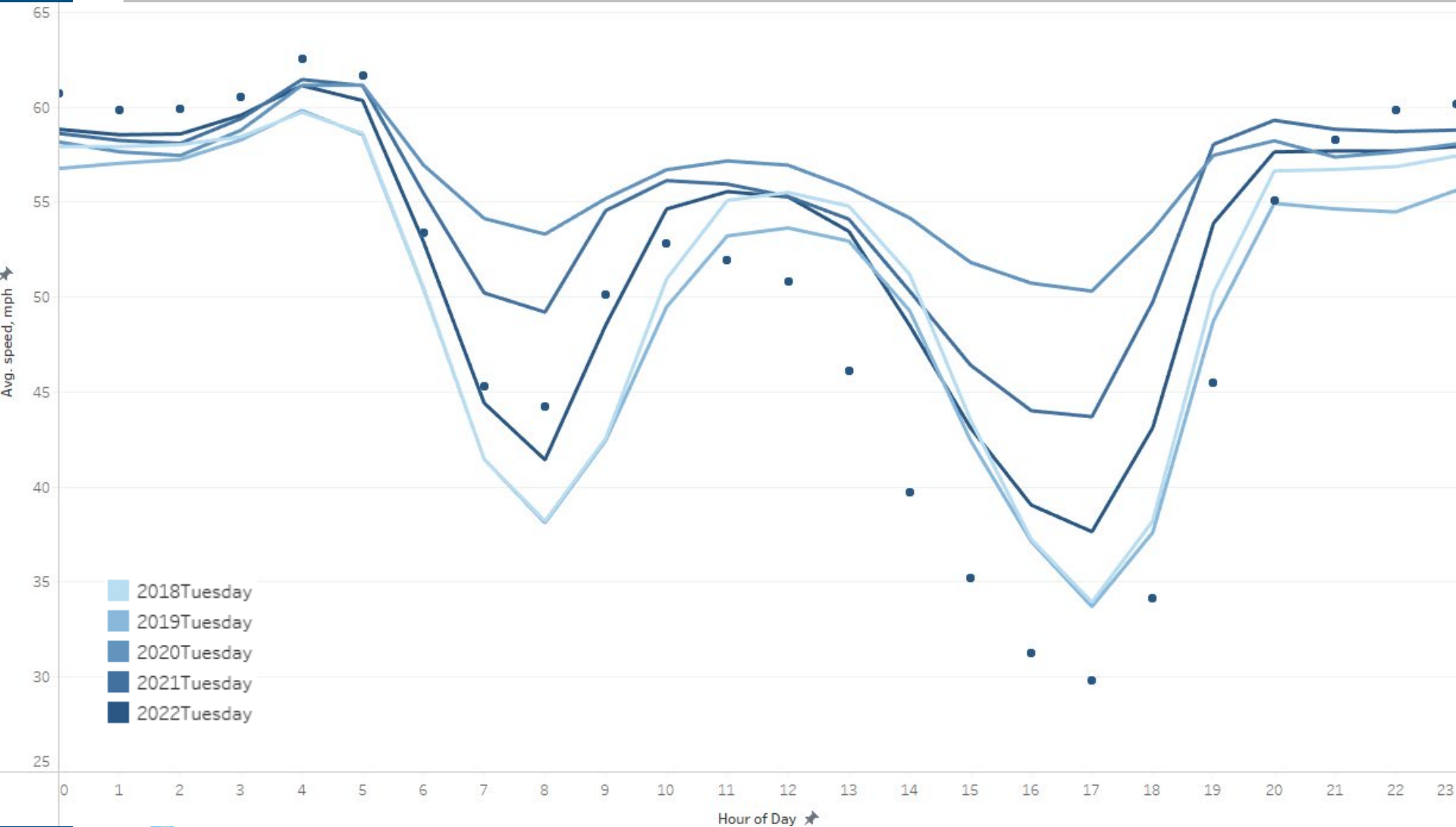
A Comparison to Thursdays



The Wednesday to Average Wednesdays



The Tuesday to Average Tuesdays



Summary

- *Traffic during afternoon rush hours of the Tuesday prior to the Thanksgiving Day would be the worse than that on the Wednesday before it.*
 - *Even busier than that on average Tuesday in 2022*
 - *Shift of traffic during afternoon rush hours of the Wednesday*
- Regional travel bounded back from the pandemic levels
- *Baseline – traffic on Thanksgiving Days*
 - *Quite stable over years*



Jan-Mou Li, Ph. D.

TPB Transportation Engineer

(202) 962-3329

jli@mwkog.org

mwkog.org/tpb

Metropolitan Washington Council of Governments

777 North Capitol Street NE, Suite 300

Washington, DC 20002

