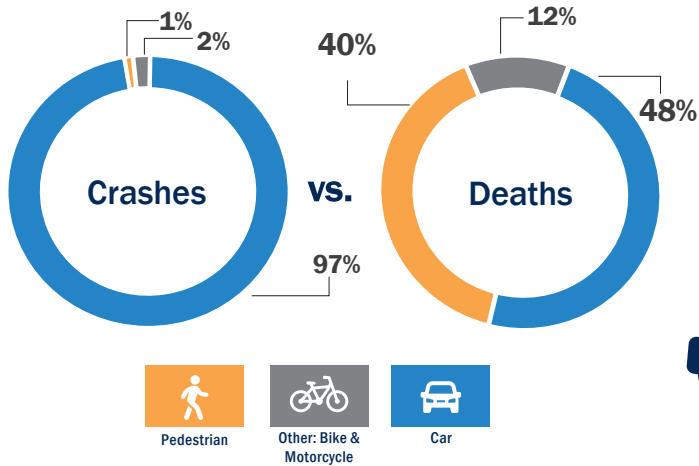


Pedestrian Safety Isn't Just a Transportation Problem

It's a public health challenge impacting some people more than others in Fairfax County.

Crashes and Deaths by Mode of Travel



An average of **172** traffic crashes involve pedestrians each year.



On average **16** pedestrians die in traffic crashes each year.



Traffic crashes involving a pedestrian are **54** times more likely to be fatal than traffic crashes involving only cars (excluding motorcycles).

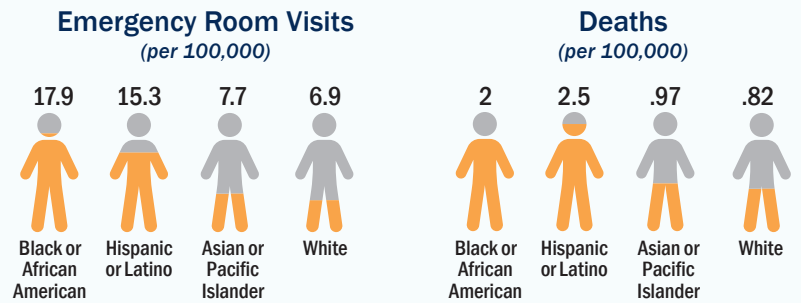
Pedestrian and Bike Injury Compared to Other Public Health Priorities

(Per 100,000 Population)



Pedestrian and bike crashes occur at nearly the same rate as non-fatal opioid overdoses and firearm related injuries.

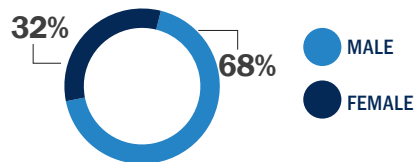
Black and Hispanic populations have the highest rates of emergency room visits and deaths due to pedestrian crashes.



FOUR out of 5 fatal pedestrian crashes occur after dark

Most pedestrian crashes and deaths occur between **October–December**

Pedestrian Deaths by Gender



Males are more likely to be involved in crashes as pedestrians, cyclists, and as drivers.



Crashes that occur in the dark where there is **NO LIGHTING** are:

- 1.5 times more likely to be fatal than crashes in the dark where there is street lighting
- 5.3 times more likely to be fatal than pedestrian crashes occurring in daylight



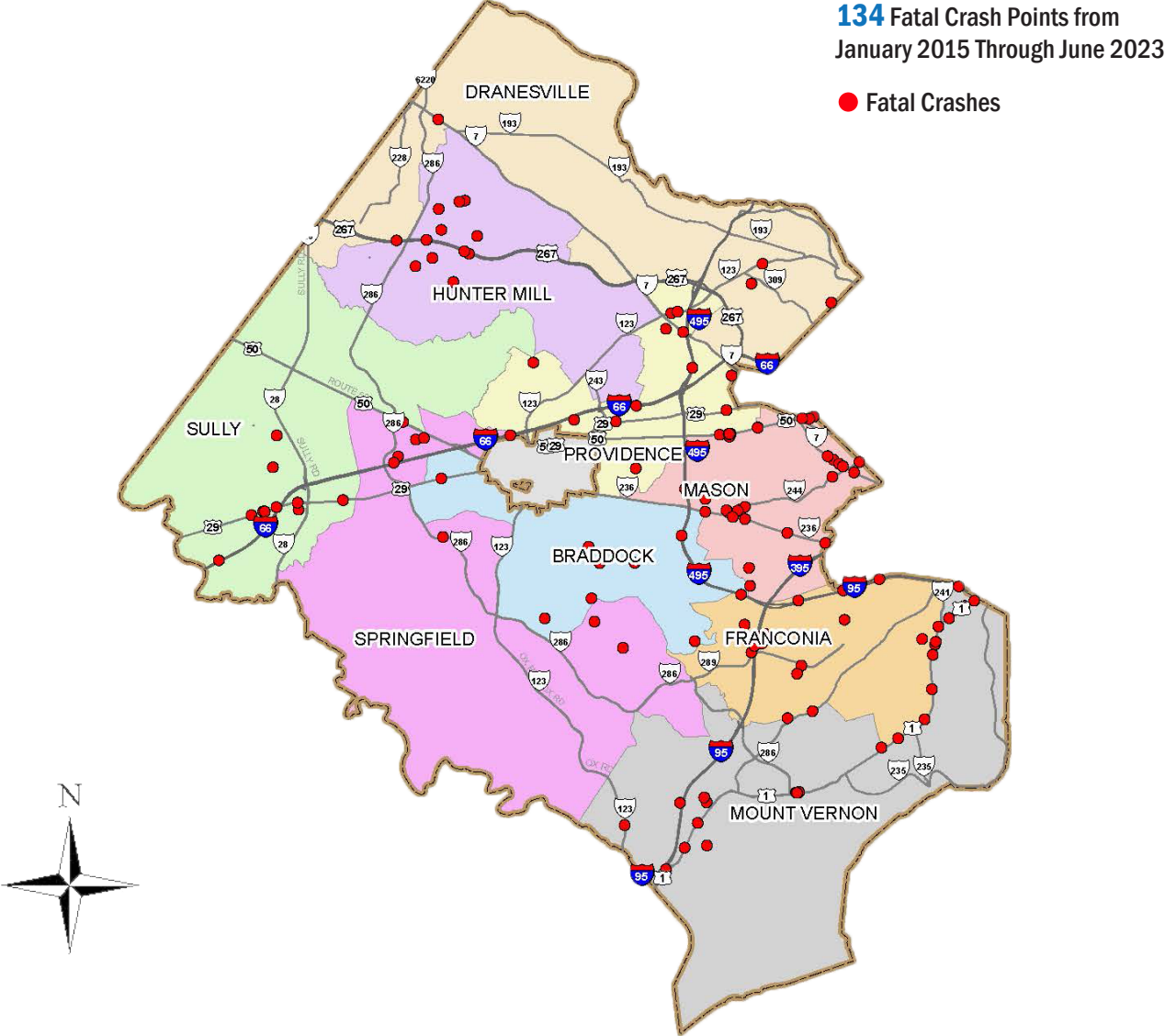
Crashes on roads with a speed limit of 35 mph or less are **3** times less likely to result in fatality than on roads with higher speeds.



Crashes occurring on roads with sidewalks are **66%** less likely to be fatal.



Fatal Pedestrian Crashes in Fairfax County, by District



Pedestrian crashes occur throughout Fairfax County, but some areas have a higher share of deaths. Annandale, Reston, West Falls Church, Seven Corners, and the Route 1 corridor all have much higher than average fatality rates.

fairfaxcounty.gov/topics/pedestrian-bike-traffic-safety

The data presented from this fact sheet are compiled by Virginia Department of Transportation from traffic crash reports from January 2015 through June 2023. Data on race for emergency room and urgent care visits, and fatalities are reported by Virginia Department of Health. Rates were calculated using population estimates from the 2015–2022 American Community Survey.