

Legend

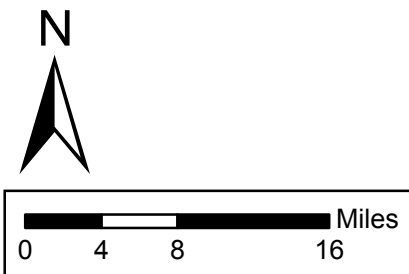
— Local Bus Lines

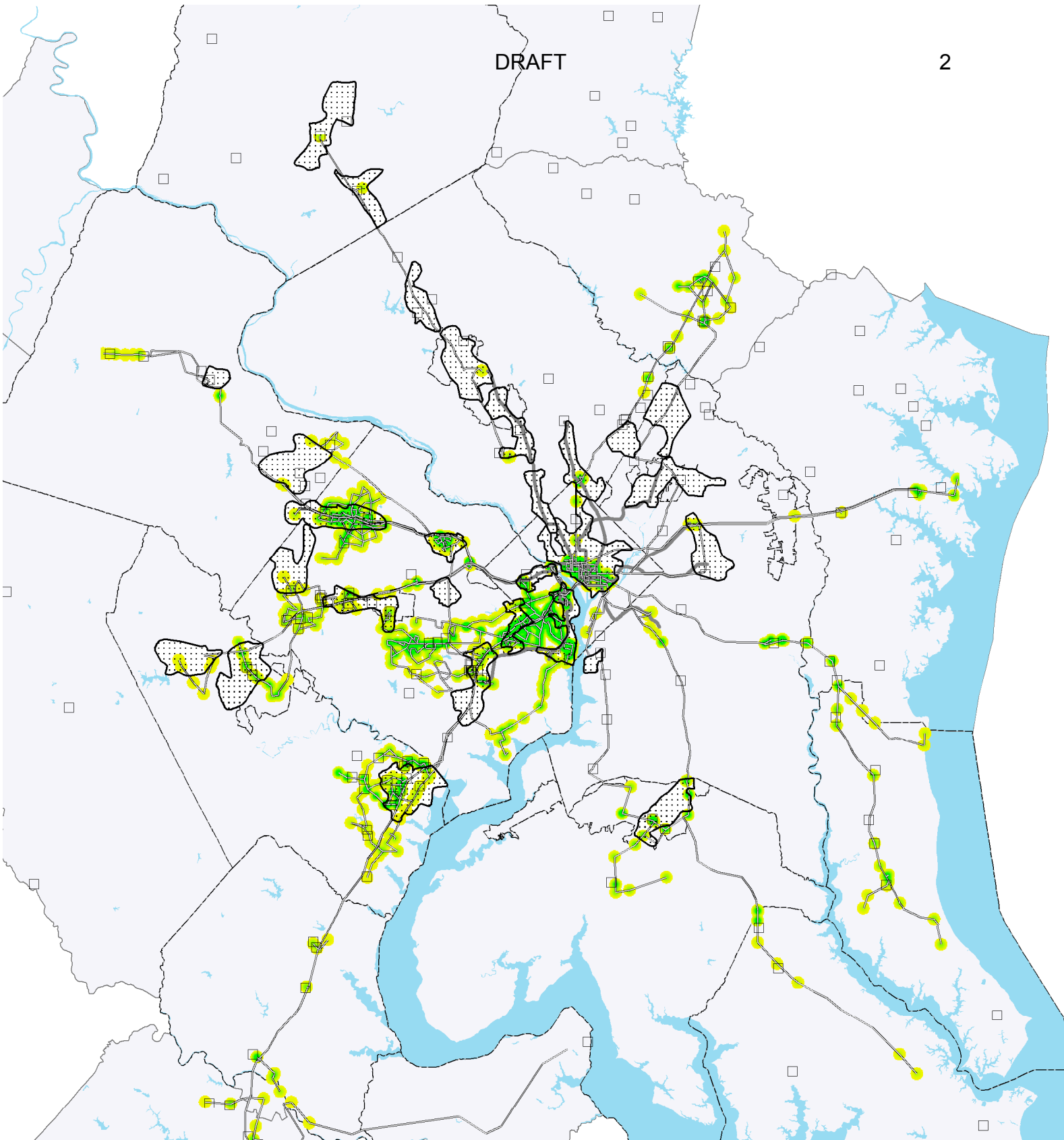
▤ Activity Clusters

Local Bus Availability 2010

High : 112.267

Low : 0

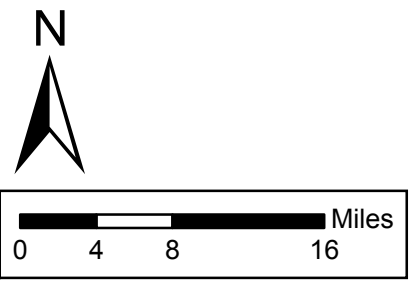
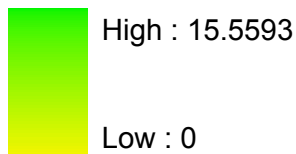


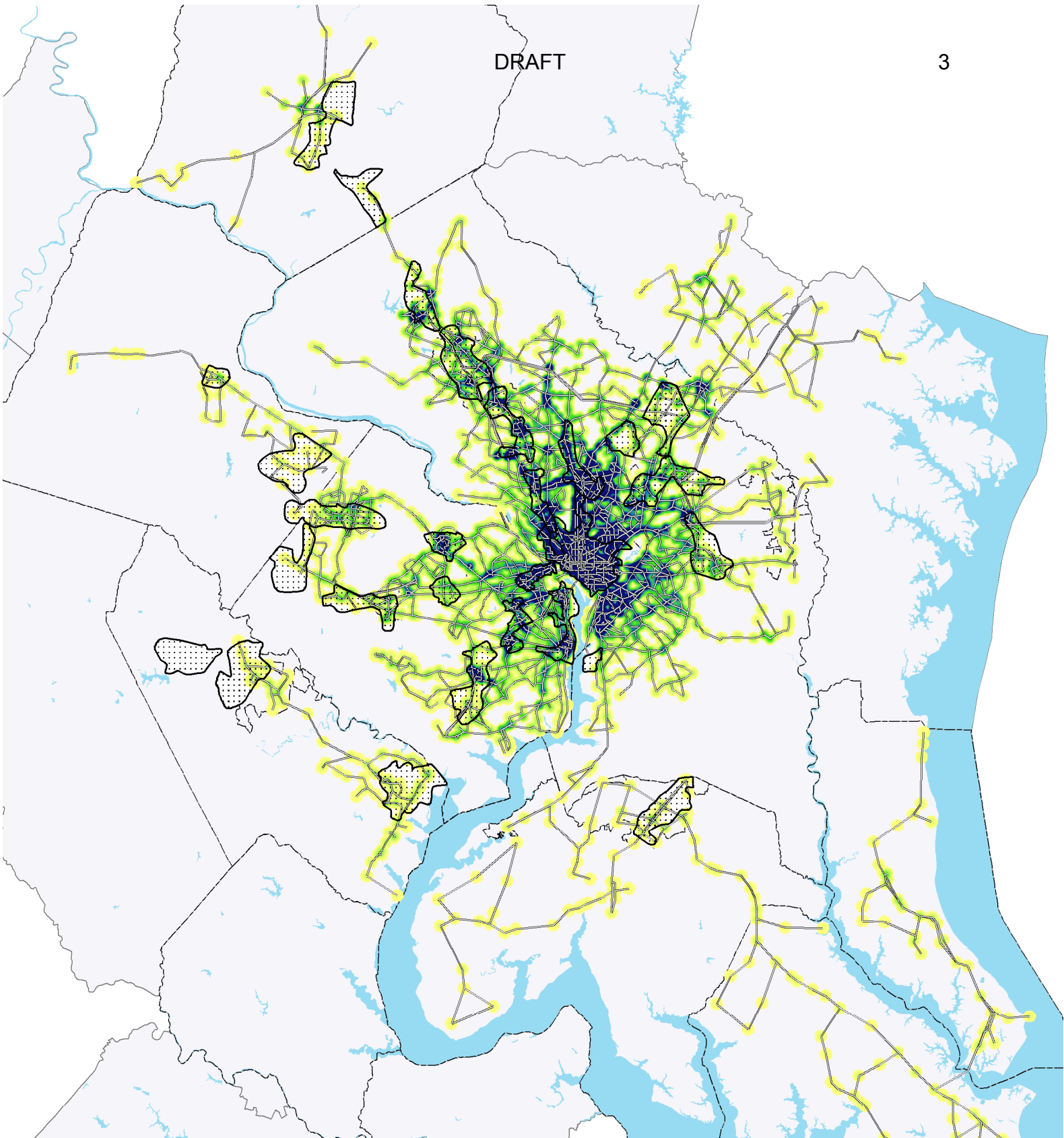


Legend

- Park and Ride Lots 2006
- Express Bus Lines
- Existing Metrorail
- ▒ Activity Clusters

Express Bus Availability 2010





Legend

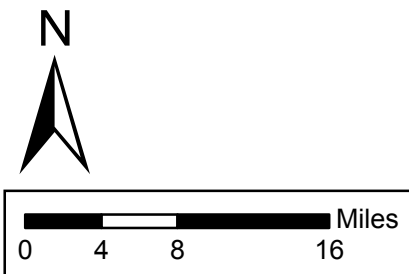
— Local Bus Lines

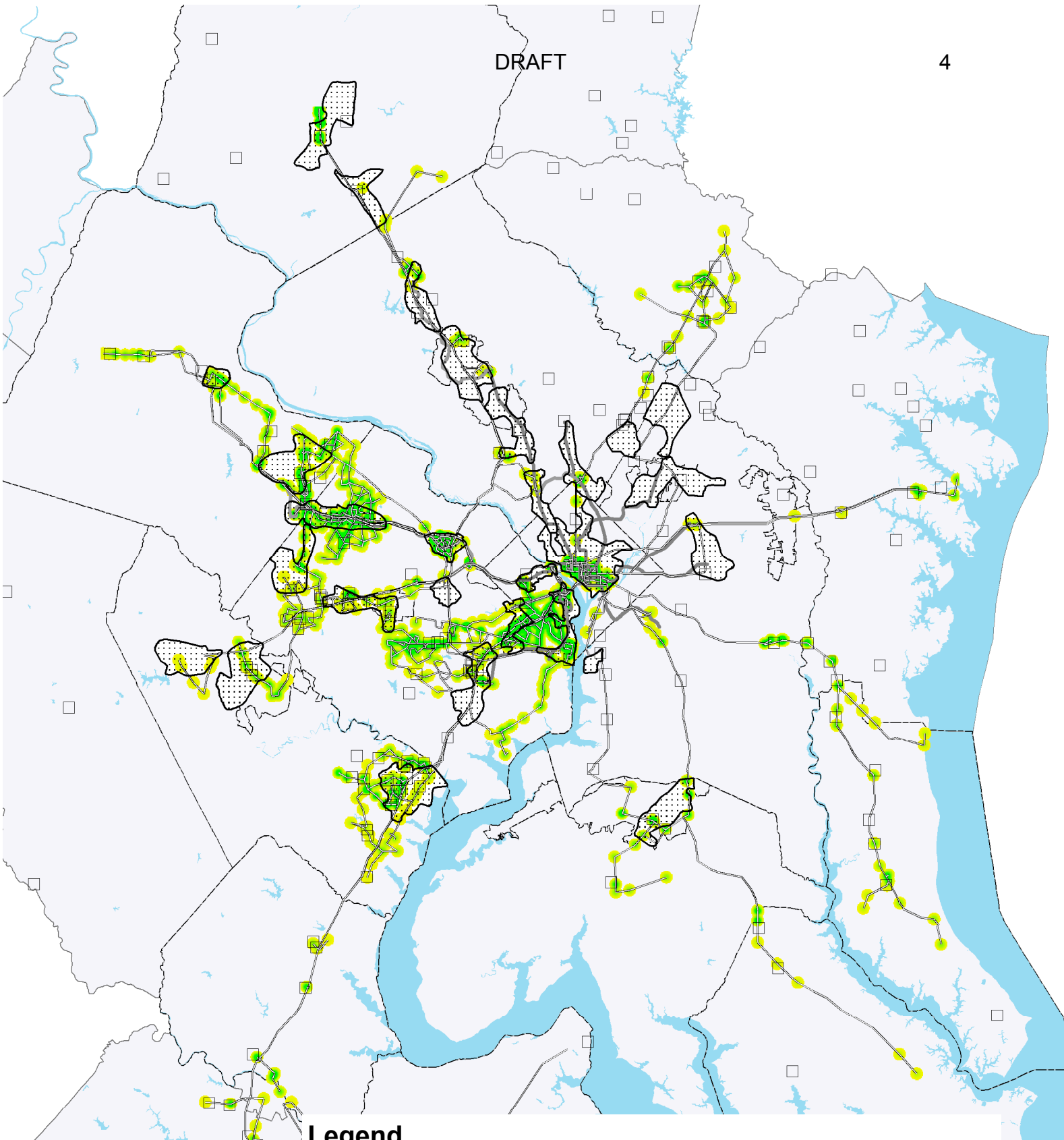
▤ Activity Clusters

Local Bus Availability 2030





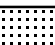
High : 112.267

Low : 0

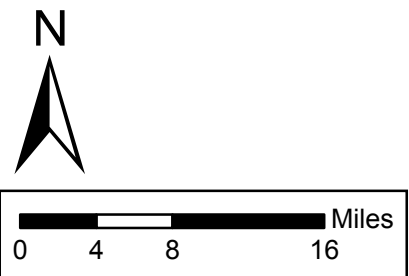
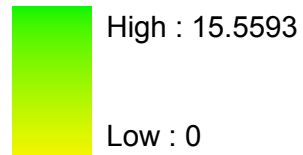


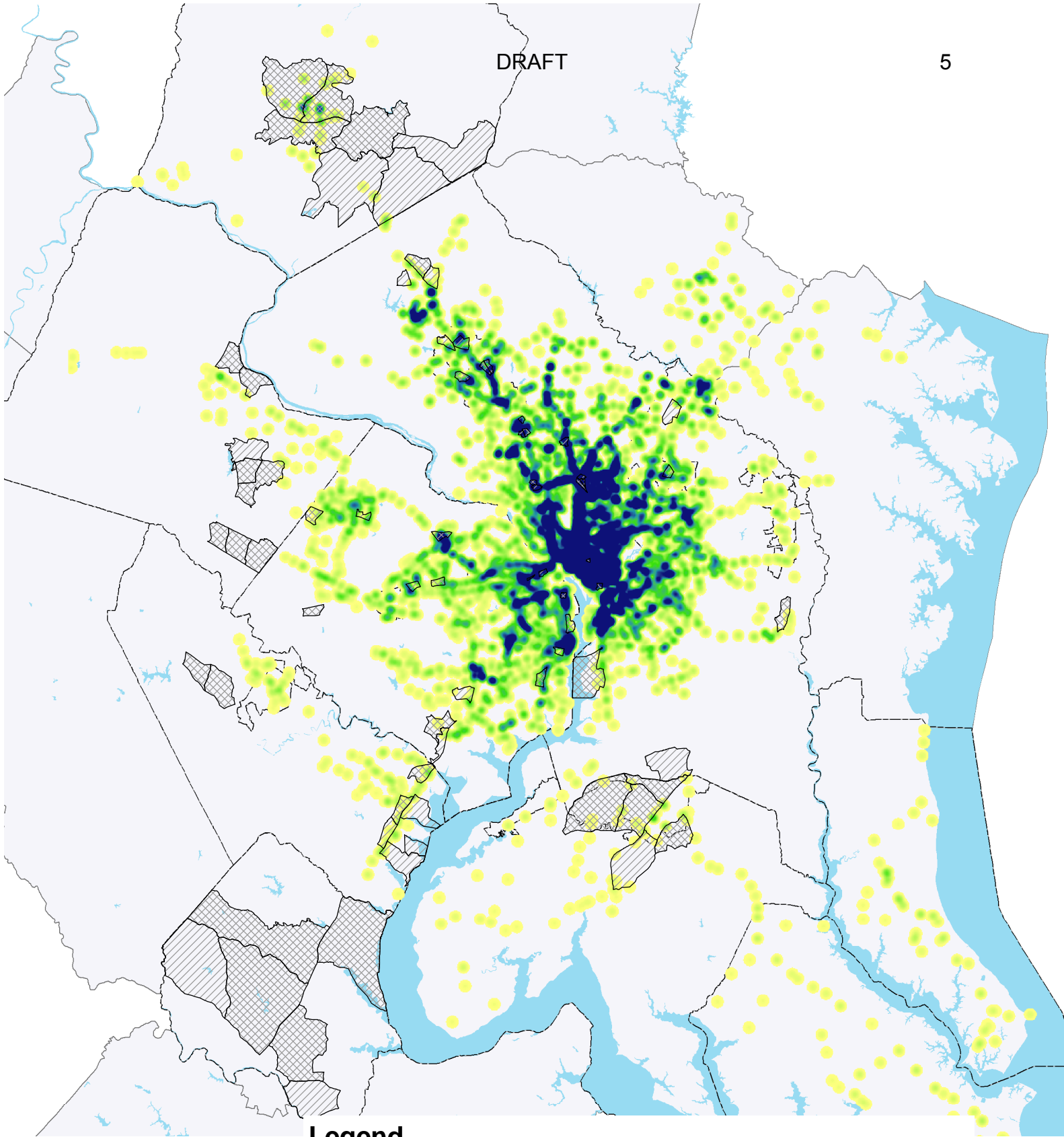


Legend

-  Park and Ride Lots 2006
-  Express Bus Lines
-  CLRP Metrorail and Light Rail
-  Existing Metrorail
-  Activity Clusters

Express Bus Availability 2030






Legend


Change in Households, 2002 - 2030

Local Bus Availability 2030

-37.0 - 1130.0

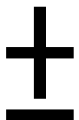
1130.1 - 1880.2

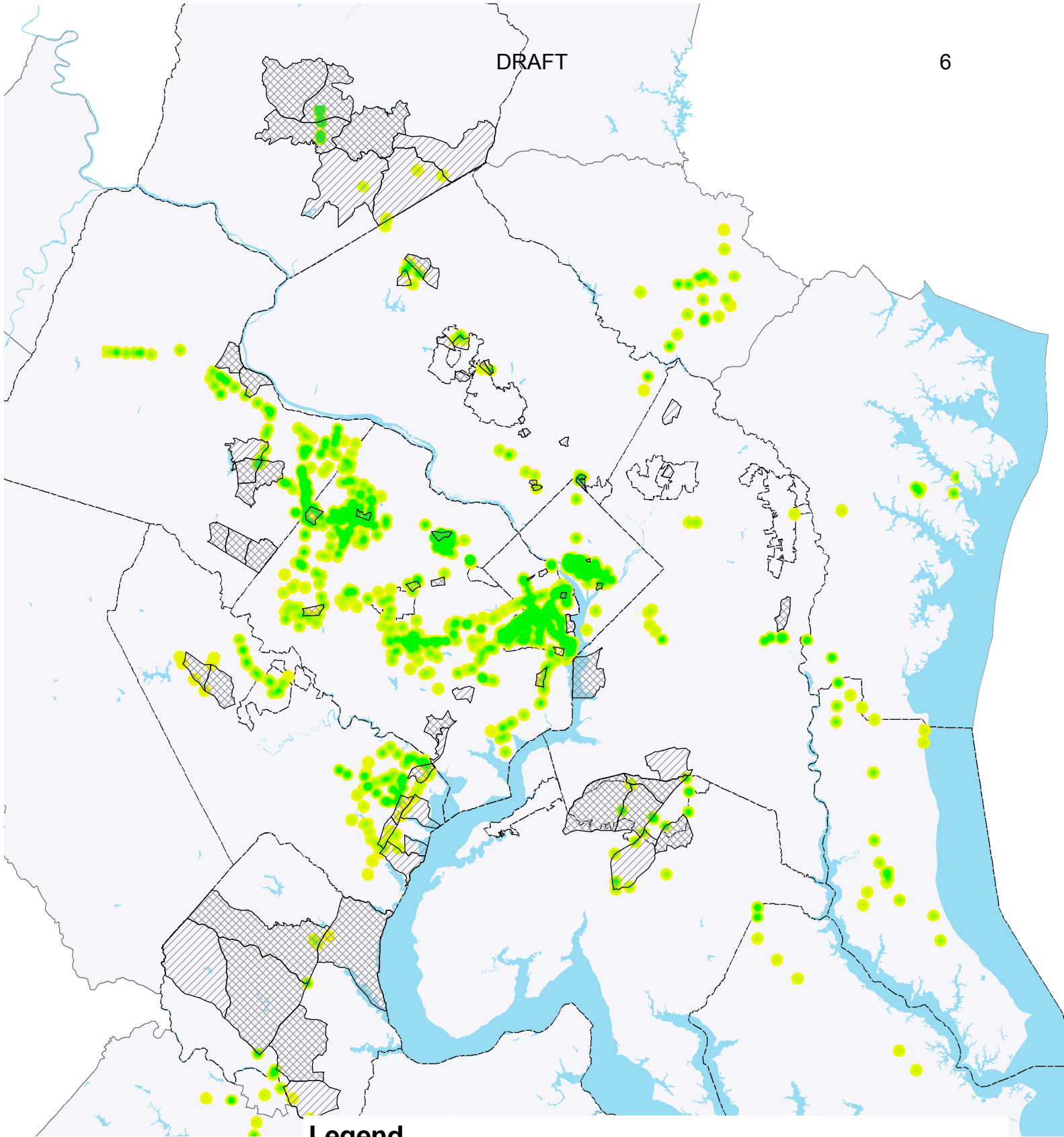
 1880.3 - 2653.1

 2653.2 - 8398.0

 High : 112.267

 Low : 0






Legend


Change in Households, 2002 - 2030


Express Bus Availability 2030

-37.0 - 1130.0

1130.1 - 1880.2

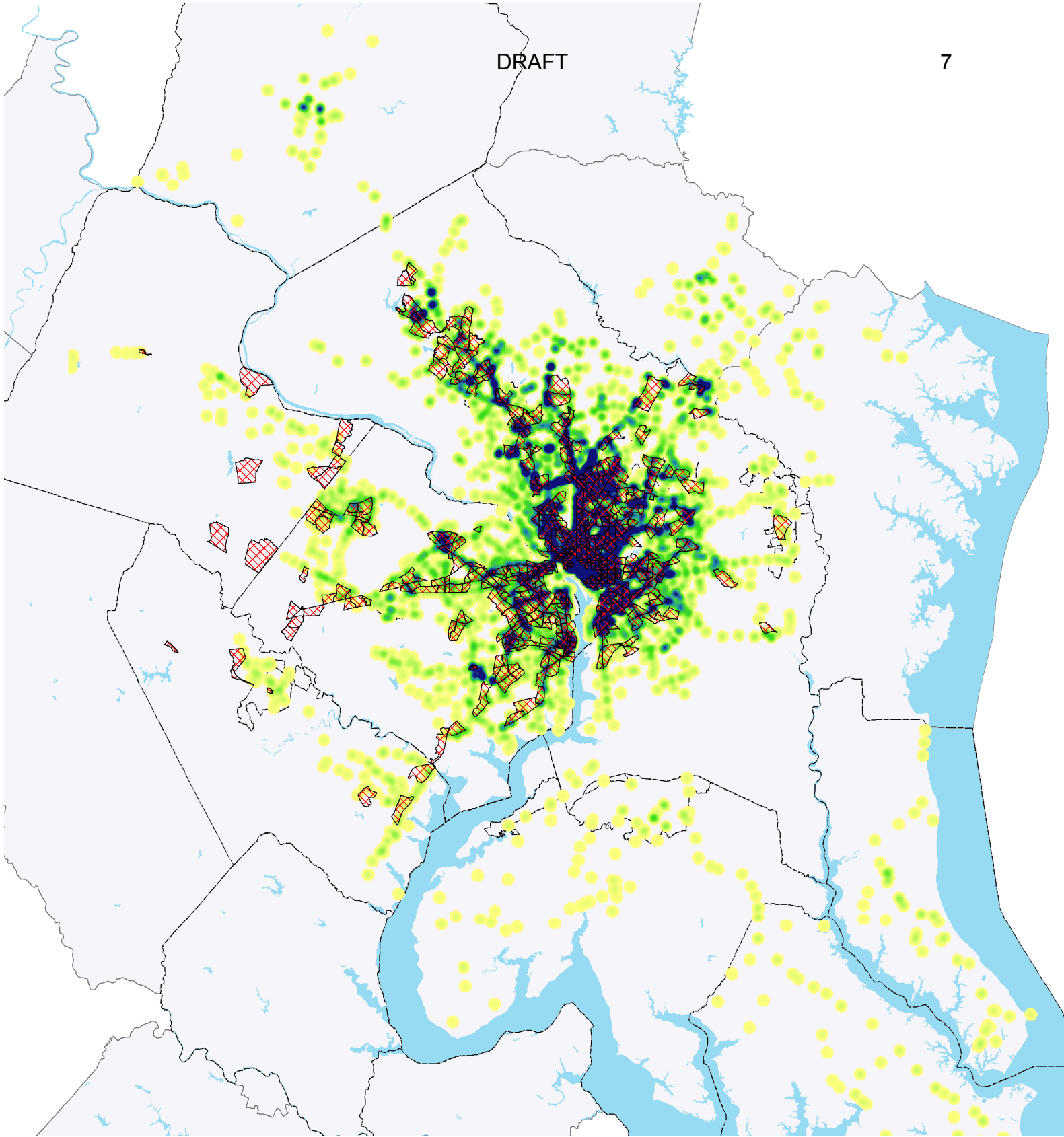
 1880.3 - 2653.1

 2653.2 - 8398.0

 High : 15.5593

 Low : 0





Legend

Density 2030

Less than 4 HH/A



Greater than 4 HH/A

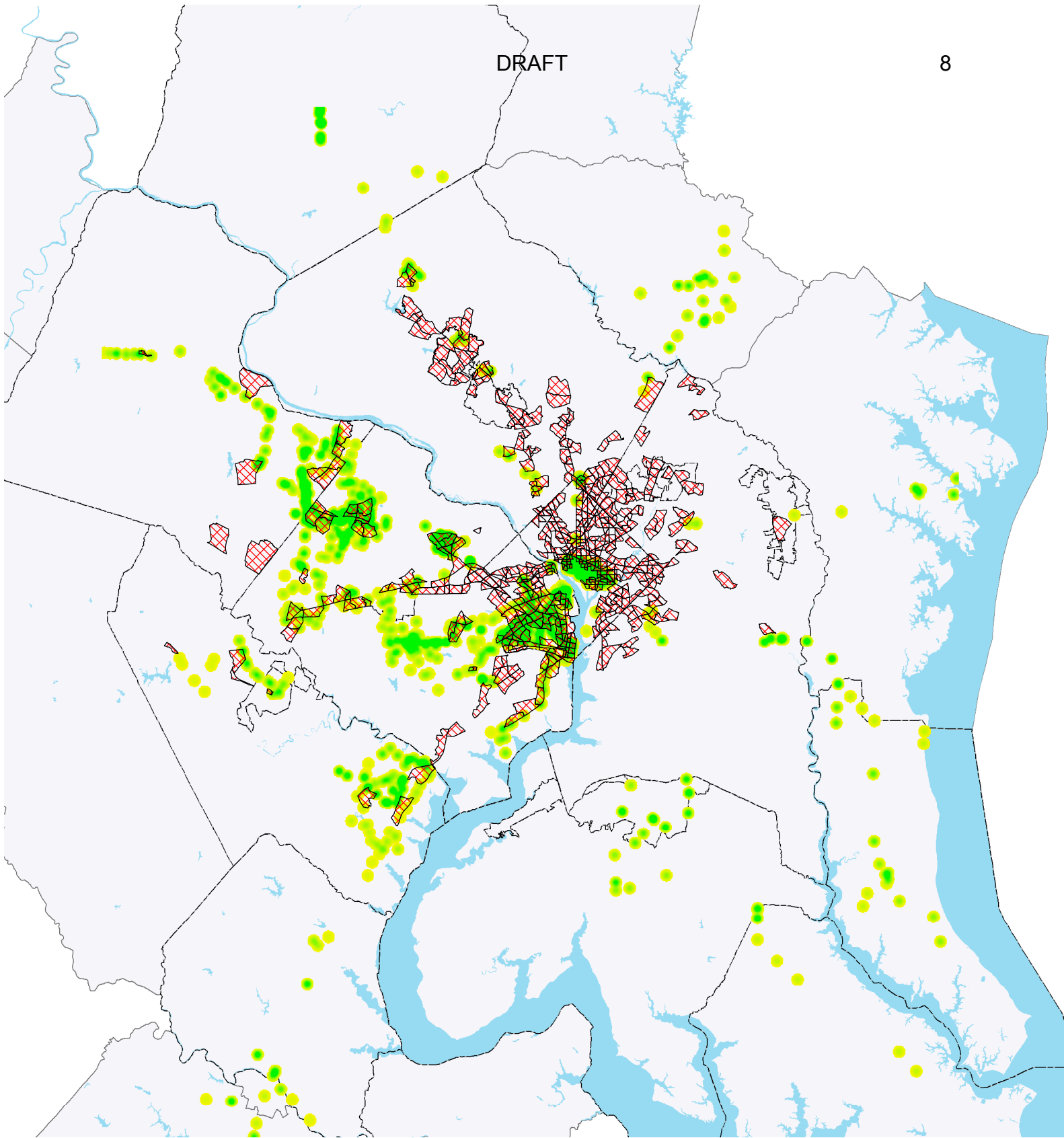
Local Bus Availability 2030



High : 112.267

Low : 0





Legend

Density 2030

Less than 4 HH/A



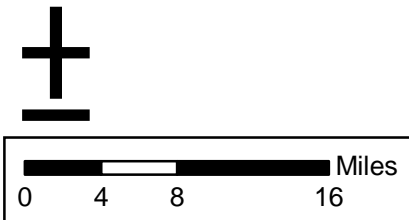
Greater than 4 HH/A

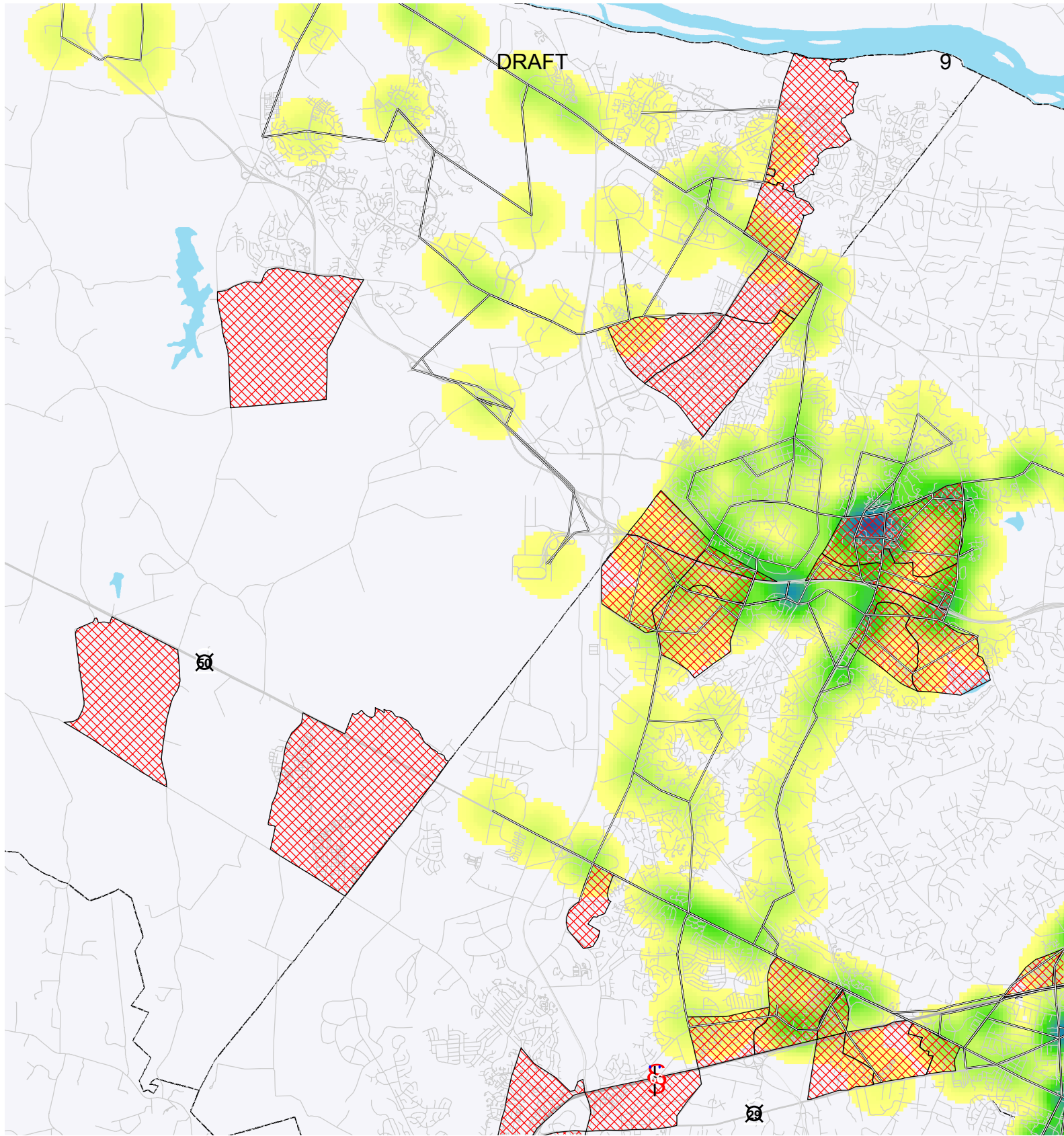
Express Bus Availability 2030



High : 15.5593

Low : 0






Legend

— Local Bus Lines

Density 2030

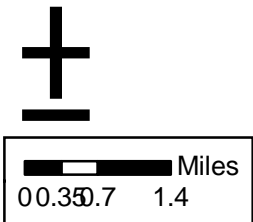
Less than 4 HH/A

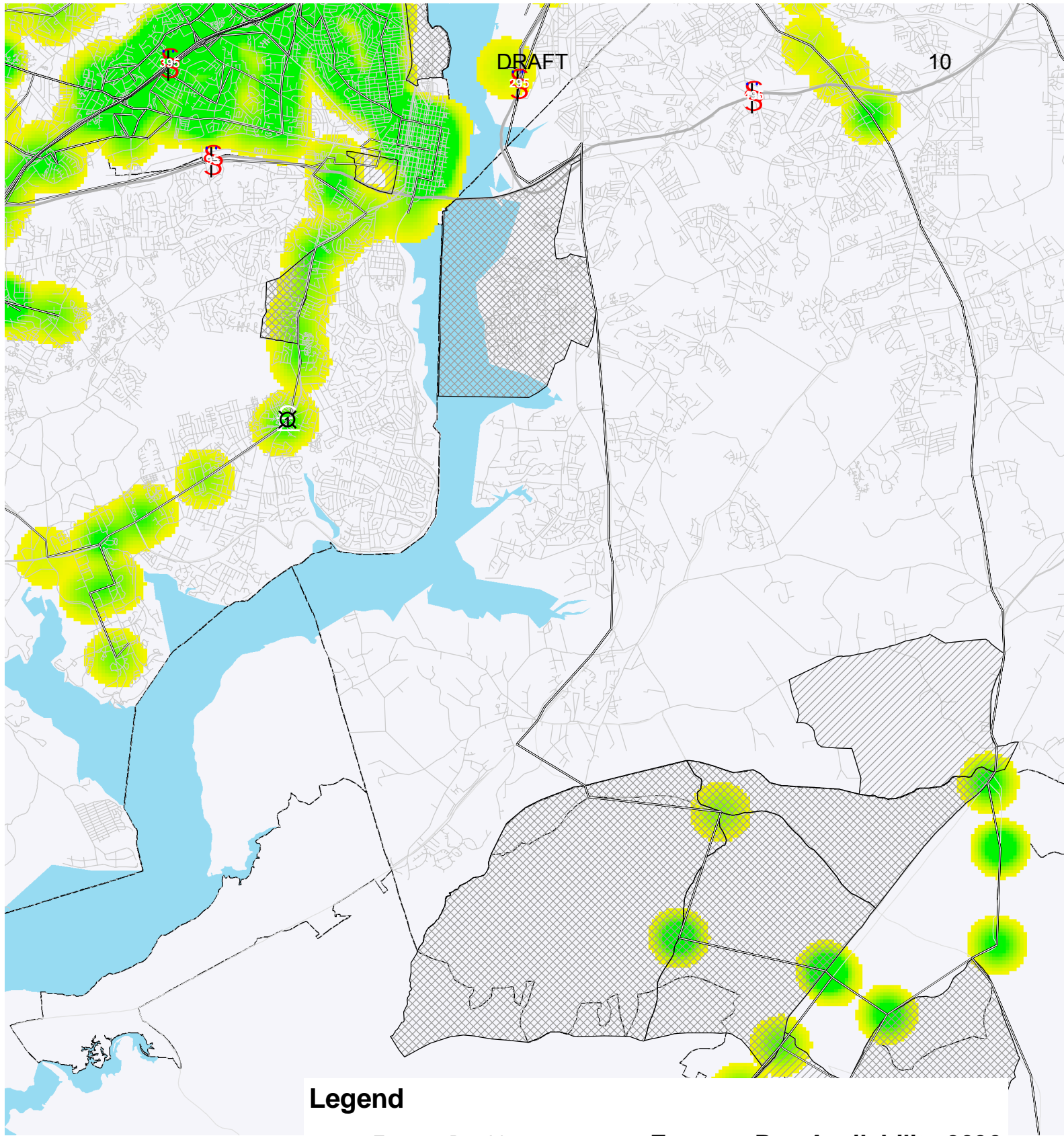
 Greater than 4 HH/A

Local Bus Availability 2030

 High : 112.267

 Low : 0









Legend

— Express Bus Lines

Change in Households, 2002 - 2030

- 37.0 - 1130.0
- 1130.1 - 1880.2
-  1880.3 - 2653.1
-  2653.2 - 8398.0

Express Bus Availability 2030

-  High : 15.5593
-  Low : 0

