



Effective Pedestrian & Bicycle Safety Enforcement

d.

August 29, 2013

George Branyan

Pedestrian Program Coordinator

District Department of Transportation

Sgt. Terry Thorne

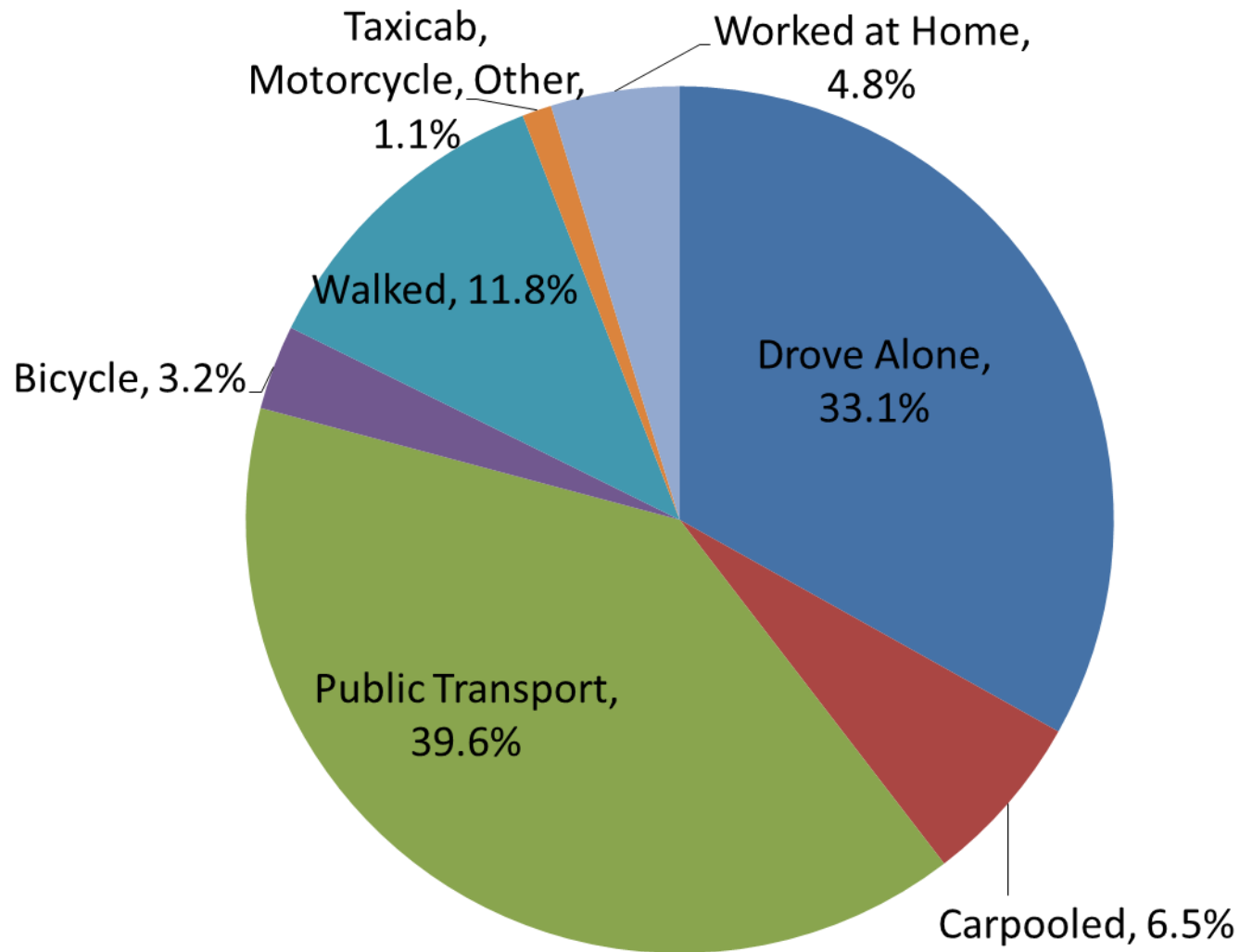
Special Operations Division

Metropolitan Police Department

Why does this issue matter?

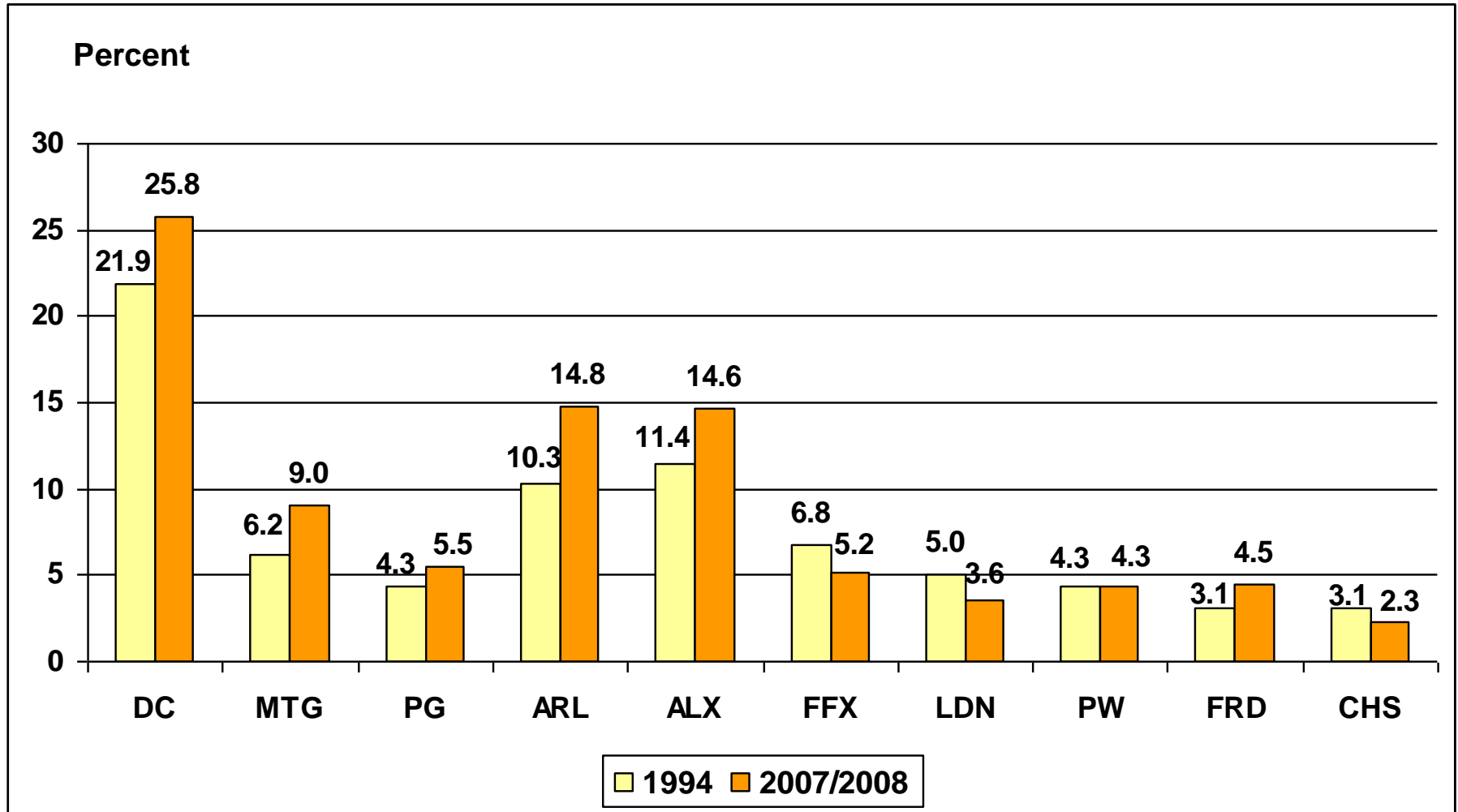


How do DC residents get to work?



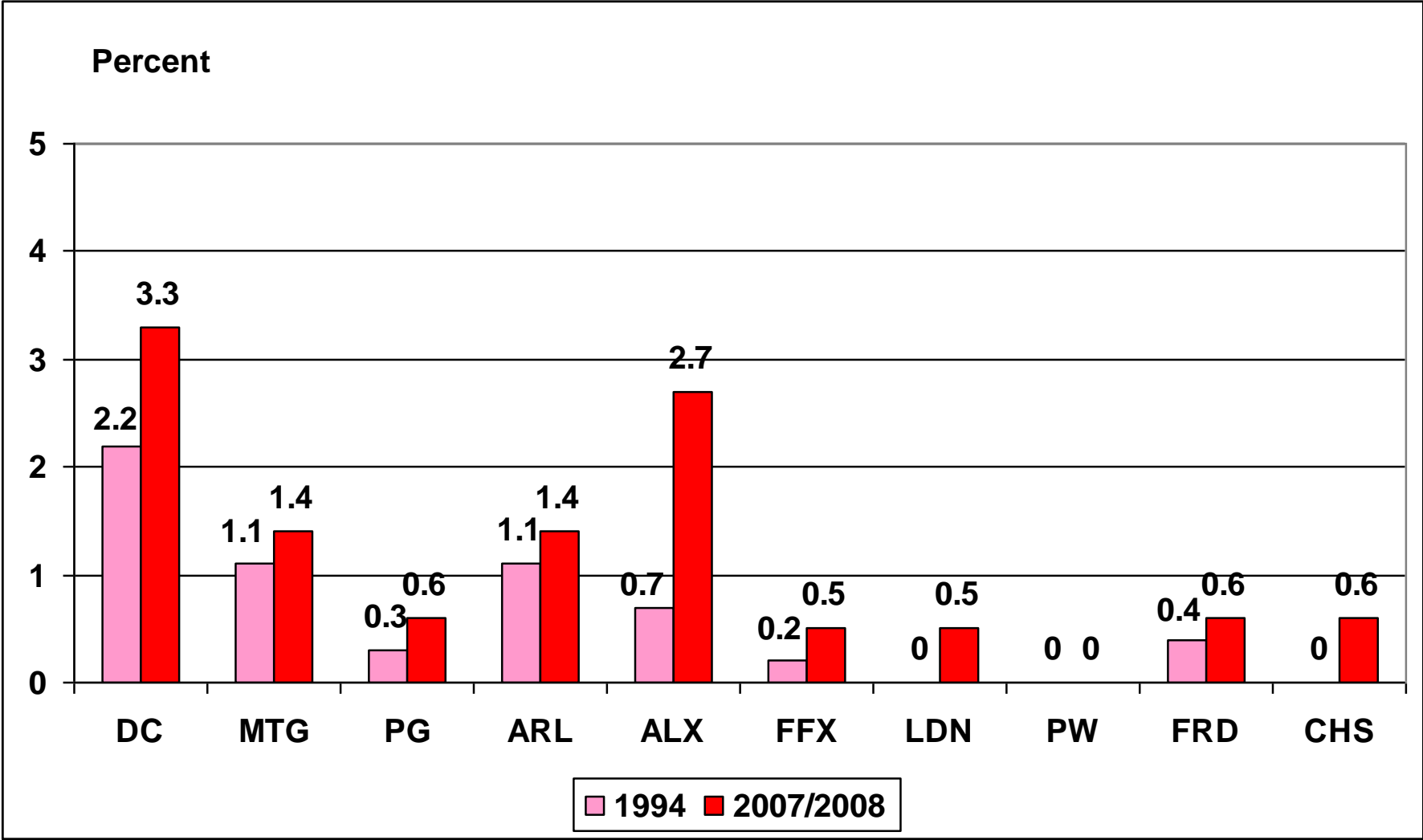
2011 American Community Survey

Daily Walk Trip Share by Jurisdiction (1994 – 2007/2008)



Source: 1994 and 2007/2008 TPB Household Travel Survey

Bike Commuting Share by Jurisdiction (1994 – 2007/2008)



Source: 1994 and 2007/2008 TPB Household Travel Survey

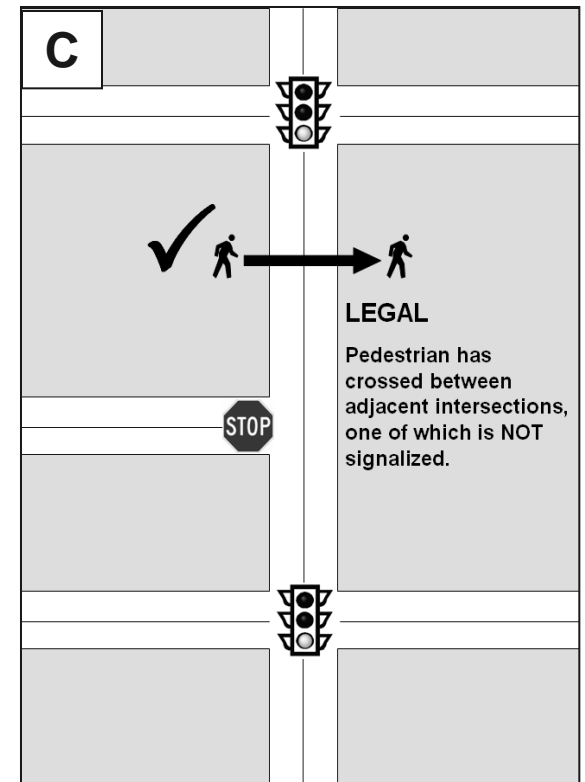
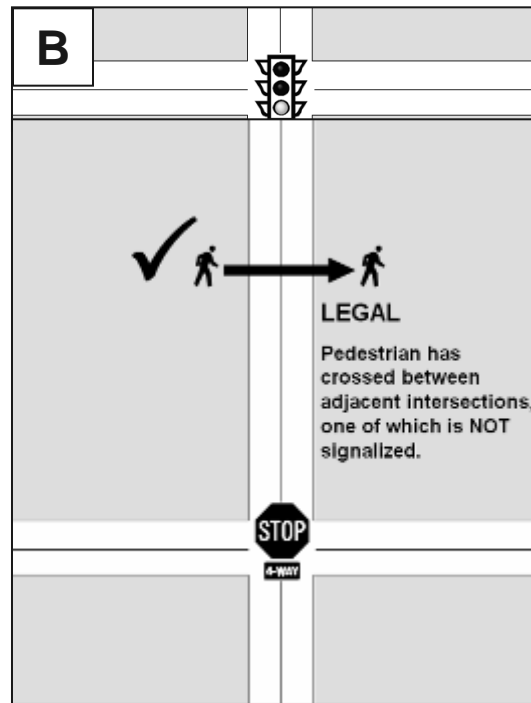
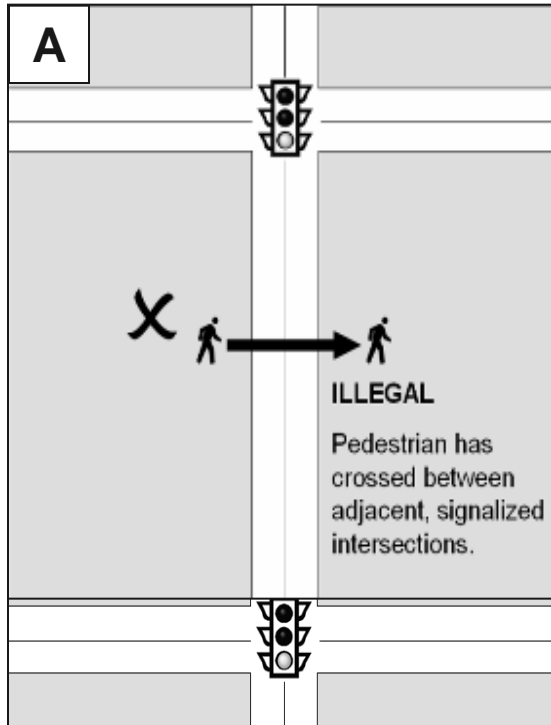


Effective Enforcement Strategies

d.



Mid-block Crossing Law for Pedestrians



- Is this distinction meaningful in practice?

Strategies for Effective Jaywalking Enforcement

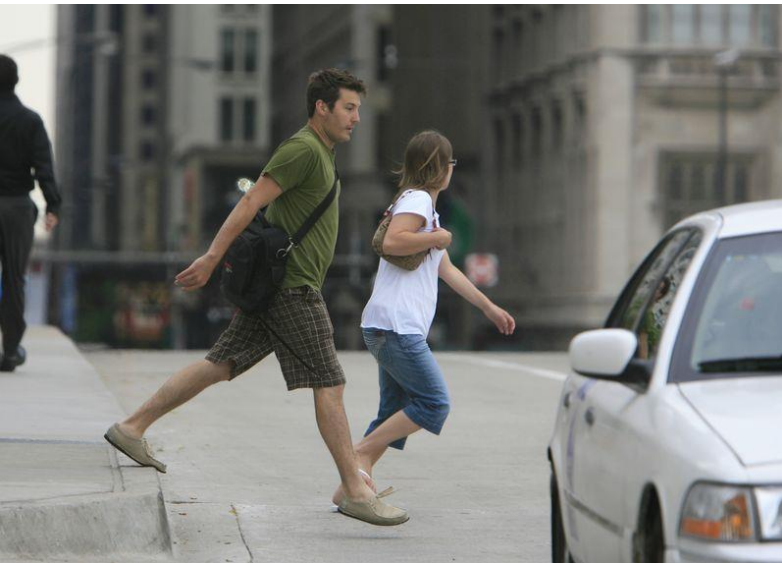
- Focus primarily on people who walk into the path of a vehicle with the right of way.
- Look for jaywalkers who put themselves in a hazardous situation by interfering with a driver's right of way



Officer Discretion and Effective Jaywalking Enforcement



- **Beginning crossing on a flashing Don't Walk signal:**
 - As long as a person is out of the crosswalk when the opposing traffic gets a green signal, no action need be taken.



- **Crossing mid-block, from between parked cars, etc:**
 - As long as a crossing pedestrian yields to vehicles legally on the street, no action need be taken.

Officer Discretion and Effective Jaywalking Enforcement

- Crossing against a signal with no vehicles approaching:
 - In many cases this does not require action. A verbal warning may be sufficient. Can depend on the type of pedestrian.

Steady

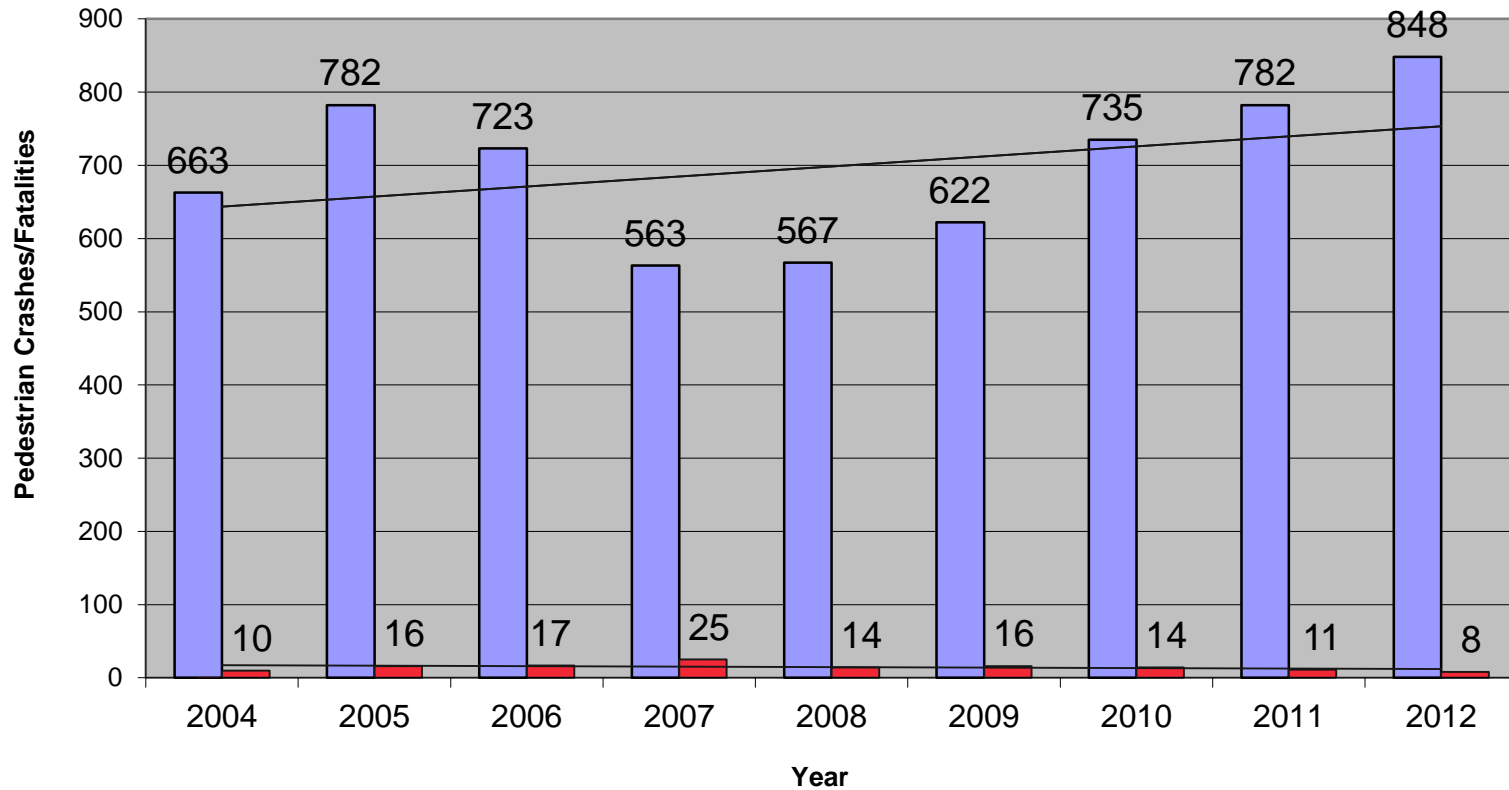


Pitfalls of Jaywalking Enforcement



Pedestrian Crash Trends

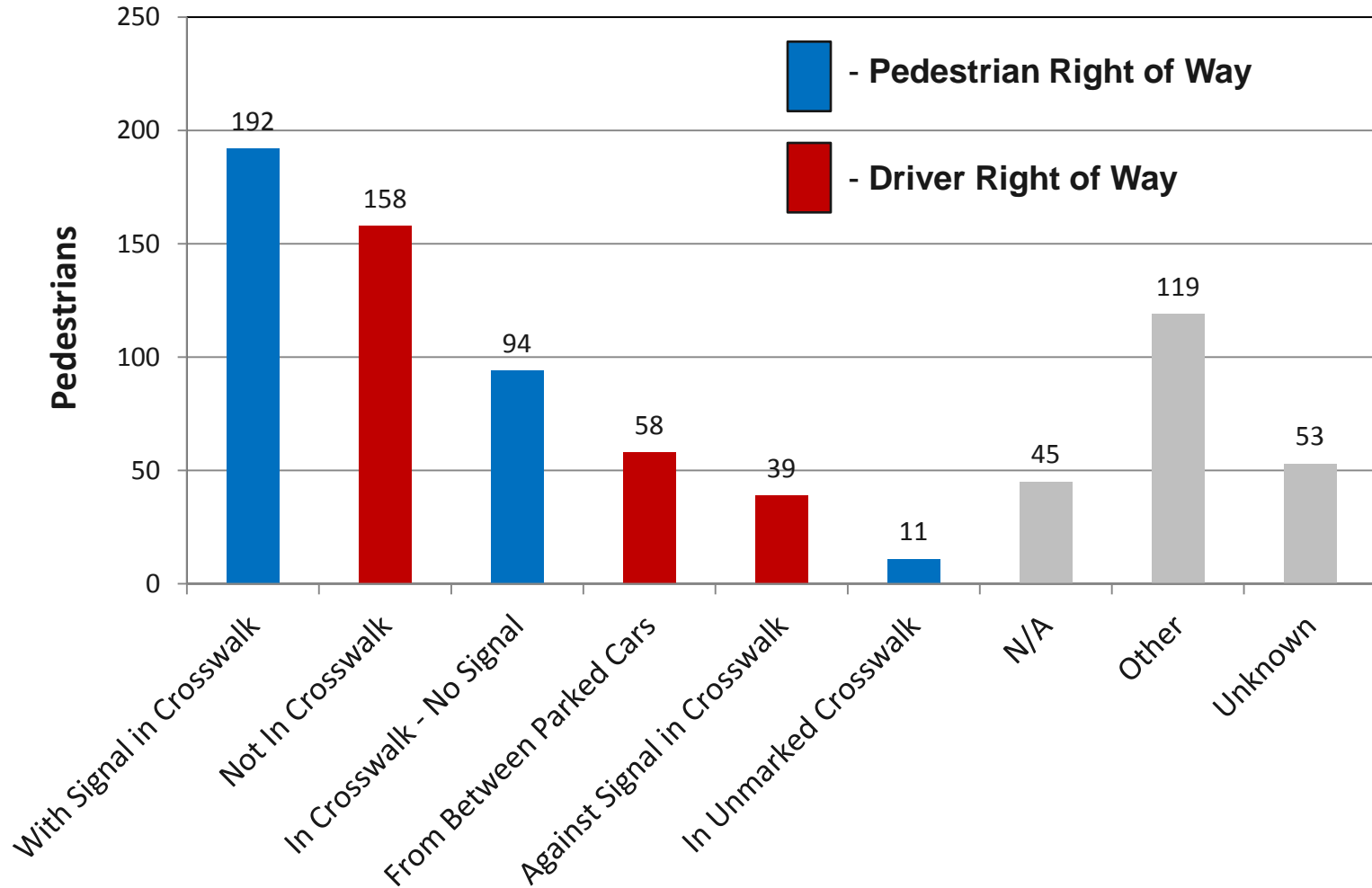
DC Pedestrian Crashes and Fatalities 2004-2012



Source: MPD

Pedestrian Crash Types

Pedestrian Action, 2010



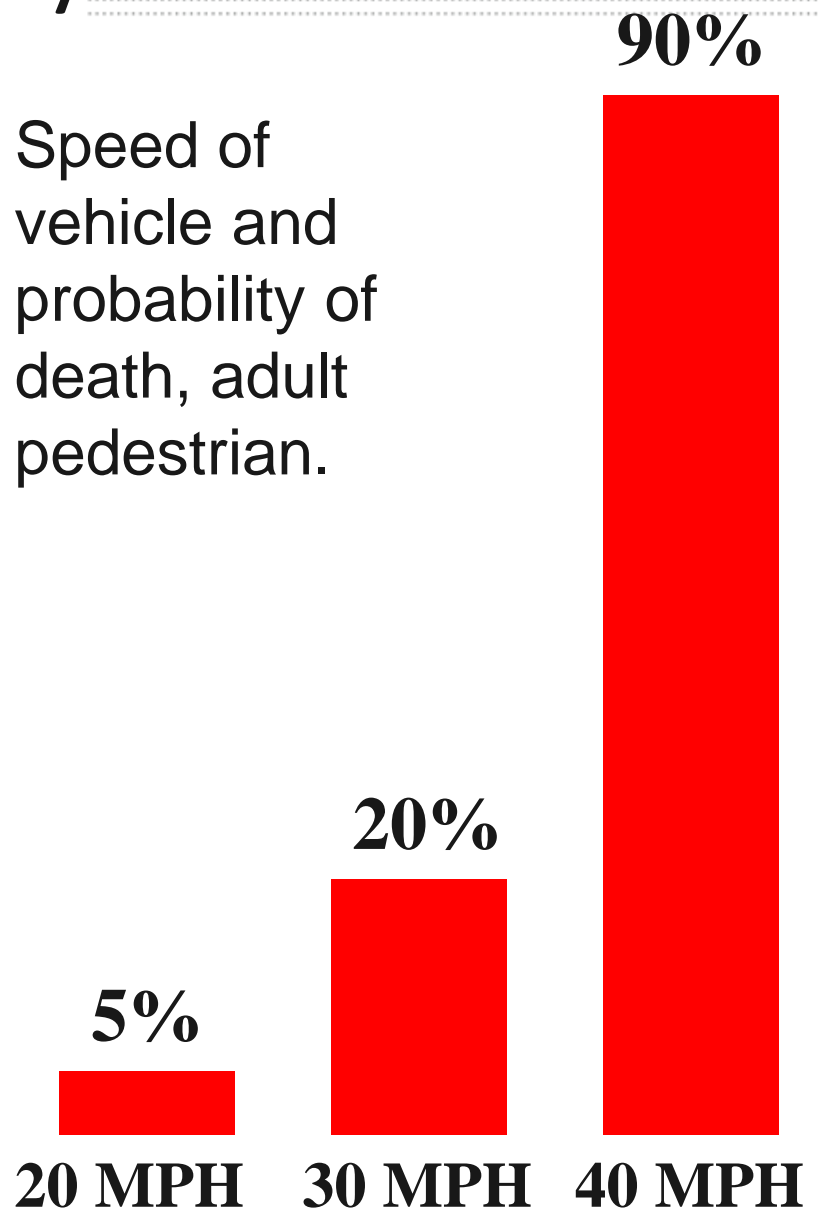
Enforcement at Signalized Intersections- Turn on Red without Stop



Speed Enforcement is Key!



Speed of vehicle and probability of death, adult pedestrian.



Speed Enforcement is Key!



Based on a family saloon in normal driving conditions

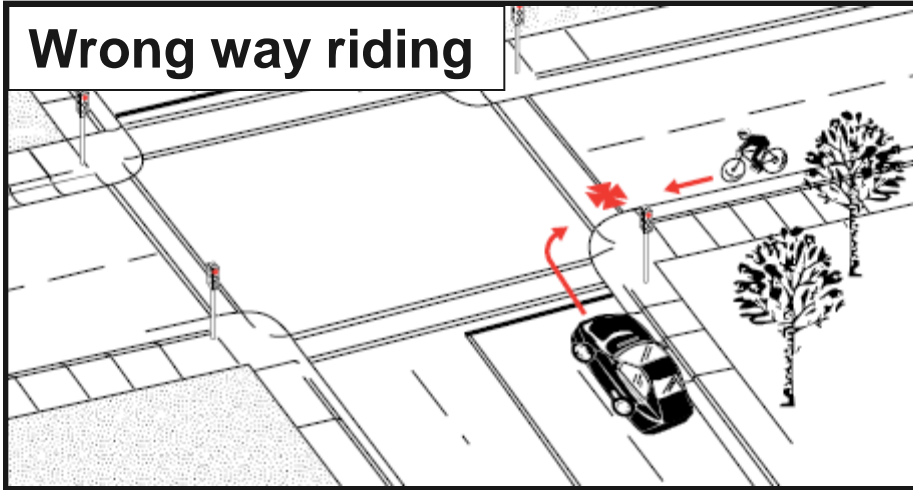
Pedestrian Crash Types and Injury Severity

Pedestrian Action	Fatal	Disabling	Non Disabling	Complaint not Visible	Other	No Injury	N/A	Unknown	Summary
With Signal in Crosswalk	0	15	44	98	6	22	4	3	192
Not In Crosswalk	5	20	47	61	5	8	3	9	158
In Crosswalk - No Signal	0	15	34	29	1	12	3	0	94
From Between Parked Cars	1	7	22	16	3	6	0	3	58
Against Signal in Crosswalk	1	8	11	10	0	4	2	3	39
In Unmarked Crosswalk	0	3	4	2	0	1	0	1	11
N/A	1	2	4	12	1	18	7	0	45
Other	1	14	23	53	8	12	4	4	119
Unknown	5	4	15	20	3	3	1	2	53

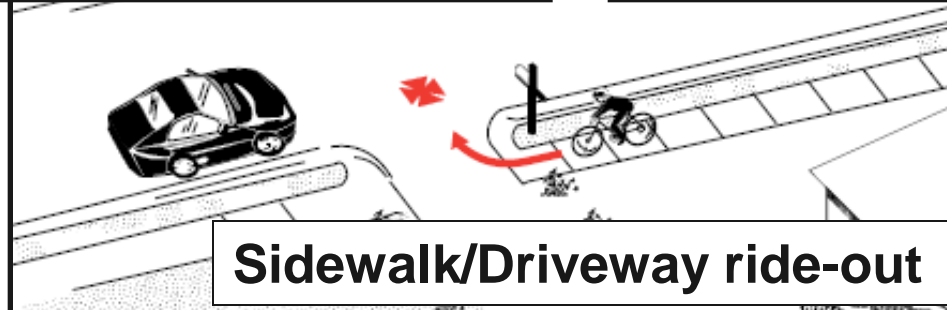
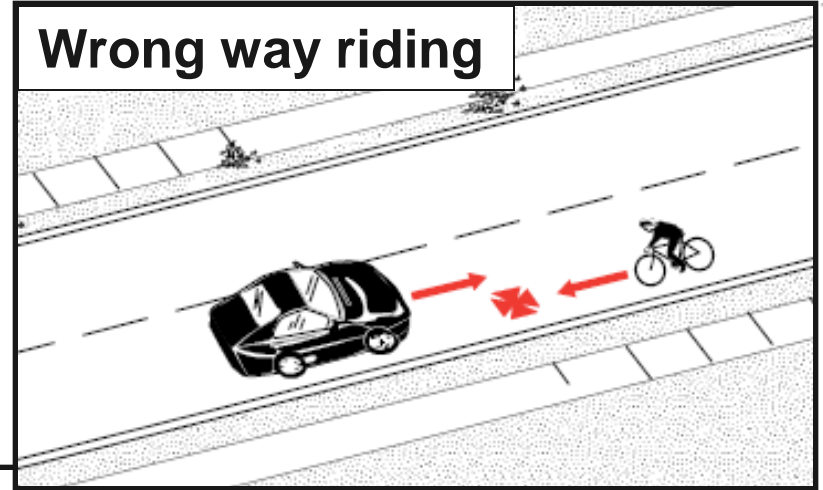
2010 Data

Target Bicyclist Behaviors:

Wrong way riding

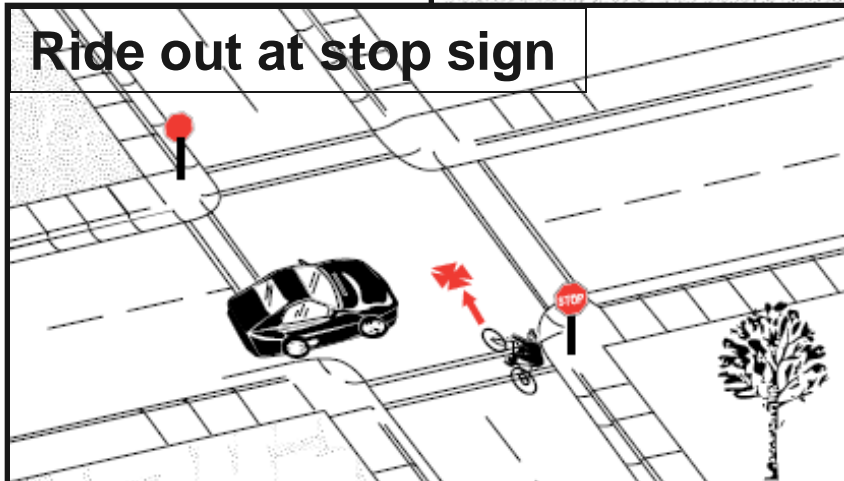


Wrong way riding

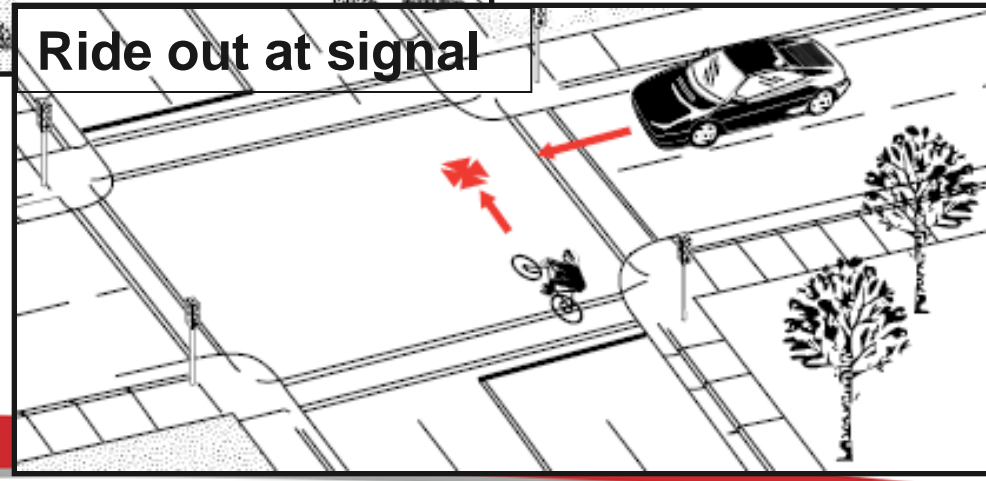


Sidewalk/Driveway ride-out

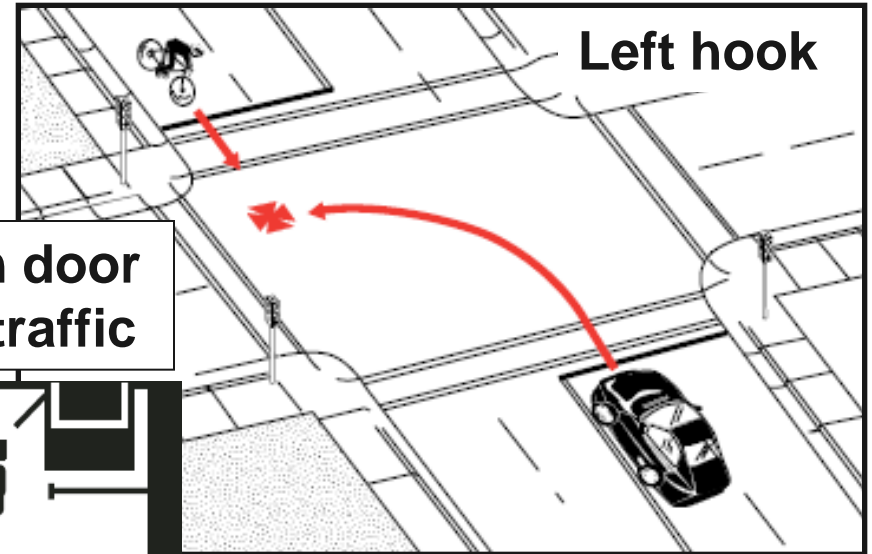
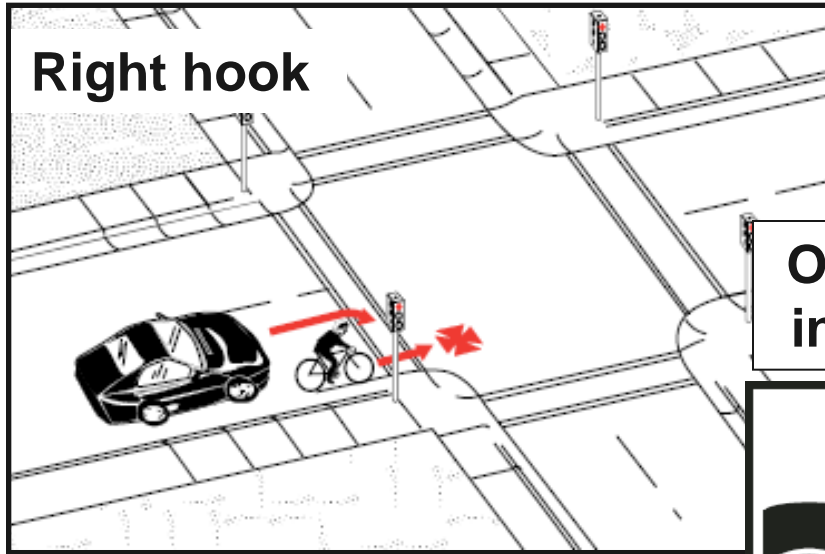
Ride out at stop sign



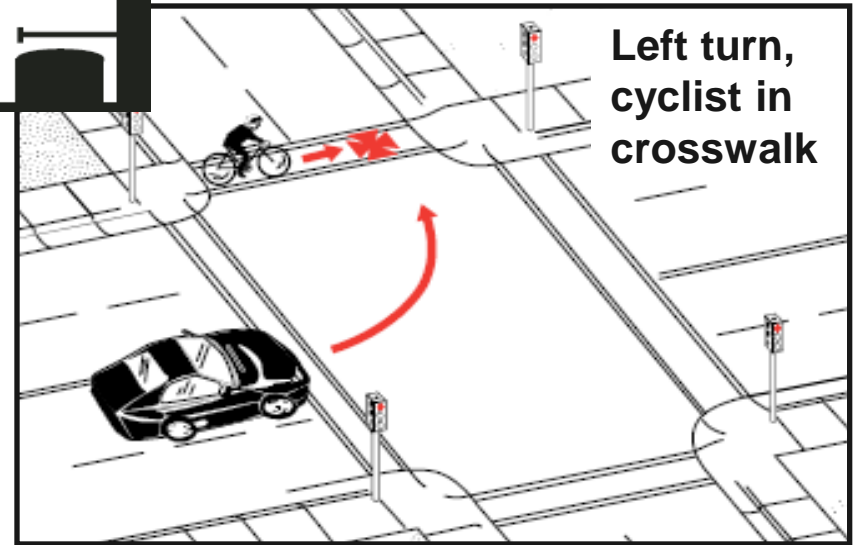
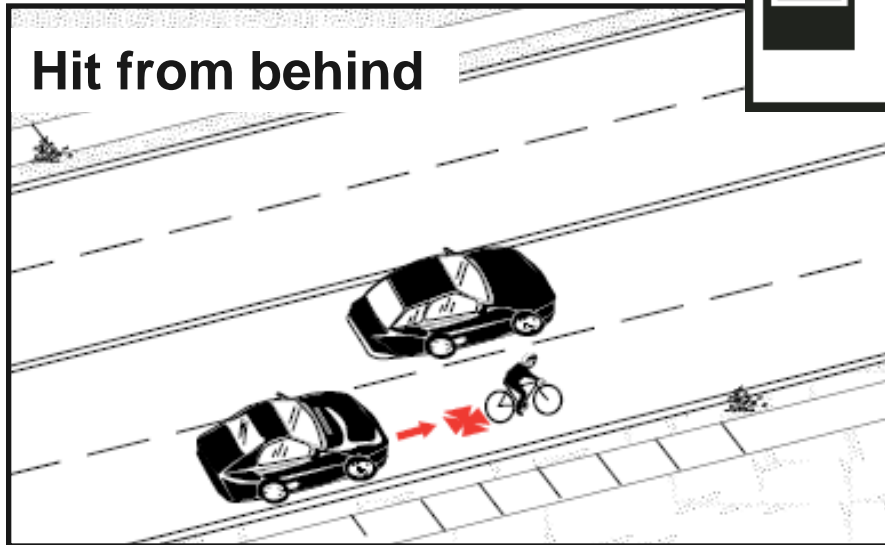
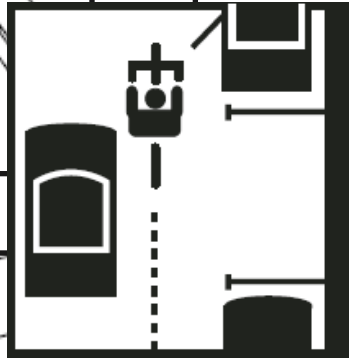
Ride out at signal



Target Motorist Behaviors:



**Open door
into traffic**





DDOT/MPD
Pedestrian-Bicycle
Safety Enforcement
Program



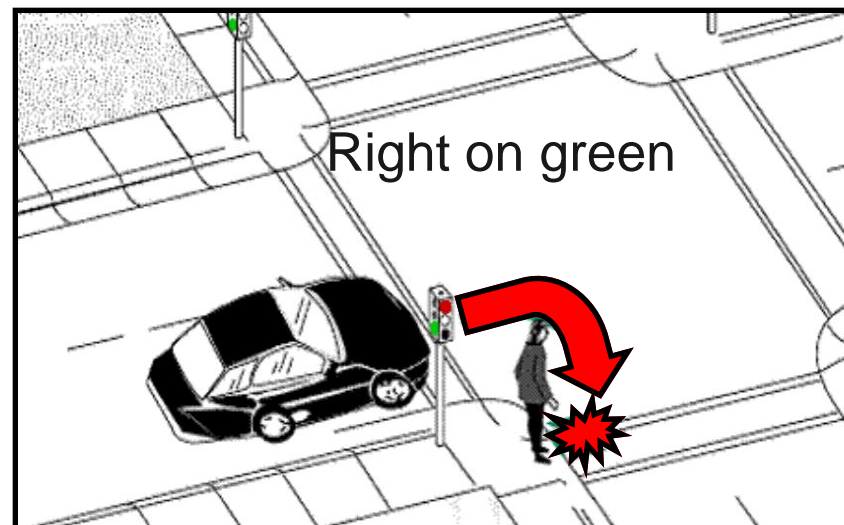
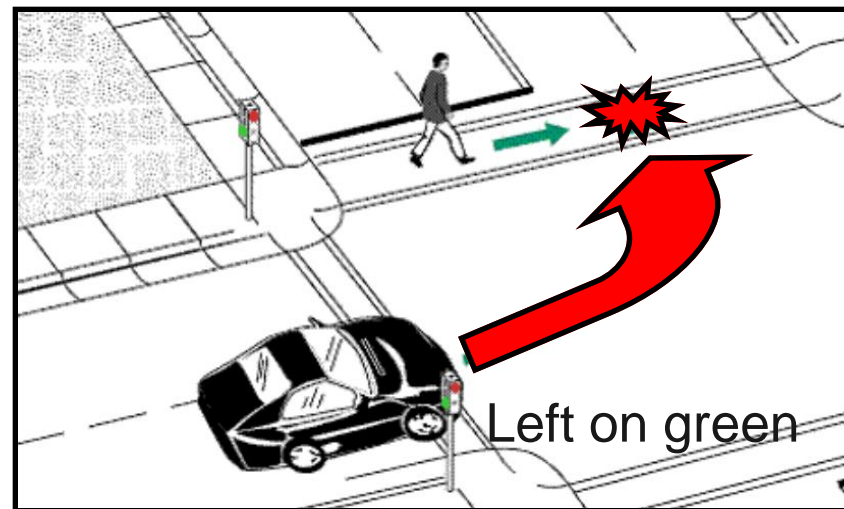
Sgt. Terry Thorne

DDOT/MPD Pedestrian-Bicycle Program:

- Training Program: Since 2005, over 600 MPD officers have received a half-day training on pedestrian and bicycle safety enforcement.
- Mandatory Pedestrian/Bicycle distance learning module went on-line in spring of 2011. All MPD officers must complete the course.
- DDOT overtime funds for traffic safety enforcement
- DDOT Traffic Control Officers
- Identification of high crash locations
- Educational Resources



Enforcement at Signalized Intersections



Enforcement at uncontrolled crosswalks



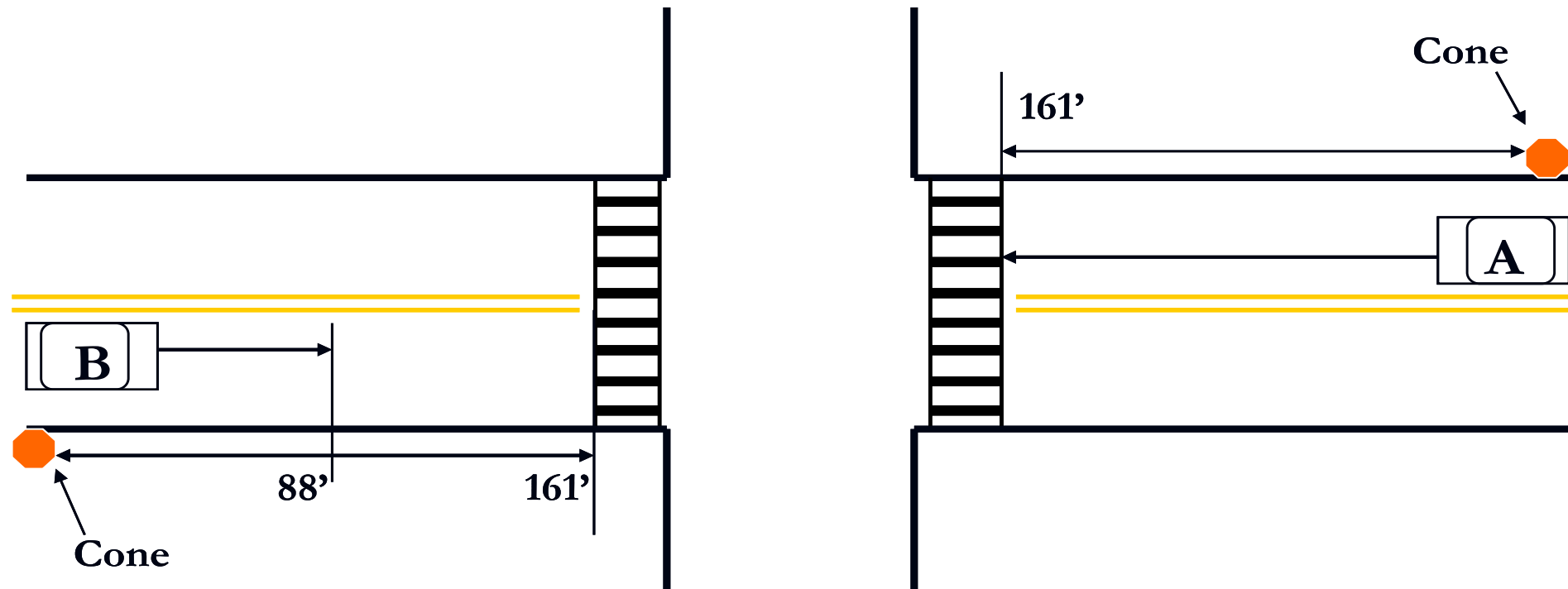
Conflict Zone

Locate officers
downstream of
crosswalk violations

Locate officers
downstream of
crosswalk violations

Setting up a Targeted Crosswalk Enforcement Operation

(aka “Crosswalk Sting” or Decoy Operation)



Location: Best locations are collector and minor arterial streets in mixed commercial/residential neighborhoods with posted speed limits of 25 mph and 2 or 4 lanes maximum.

Setting up a Targeted Crosswalk Enforcement Operation (aka “Crosswalk Sting” or Decoy Operation)



Enforcement at uncontrolled crosswalks

Pullover team located here



Crosswalk located here



MPD Enforcement Program, 2012

Targeting Pedestrians



Pedestrian Intercept enforcement, Benning Rd. and Minnesota Ave, NE.



Pedestrian enforcement, 14th St. and Irving St. NW.

MPD Enforcement Program, 2012

Targeting Drivers



Pedestrian decoy crosswalk operation on Minnesota Ave. and Blaine St. NE.



MPD Bicyclist Enforcement Program, 2012



14th St. NW
Columbia Heights

15th St. NW Cycle
Track

Enforcement Stats Example Summer, 2010

Metropolitan Police Department Washington DC 2010 Ped Enforcement



VIOLATIONS	# OF CHARGES
Distracted Driver (Cell phone)	225
Fail to Clear Intersection/Obstructing Crosswalk	33
Fail to Give Full Time/Attention Distracted Driver (all except cell phone)	10
Fail to Give Right of Way to Ped \$250.00	85
Failure to keep to the right (bike)	1
Fail to Yield Right of Way (auto/ bike)	30
Hazardous Driving (bike)	1
Opening Door to Traffic	
Parking Violations [Abreast, in crosswalk, too close to inters, bus zone, on sidewalk]	1
Passing red light (auto/bike)	31 (5 bikes included)
Riding on the sidewalk (bike)	
Right Turn on Red (auto)	5
Speeding (all)	28
Walking against the do not walk (ped)	169
Walking into the path of vehicle (ped)	151
Walking in street/sidewalk prov (ped)	
Seatbelt Violation	361
<i>ALL OTHER MOVING</i>	616
<i>ALL OTHER BIKE</i>	
<i>ALL OTHER PEDESTRIAN</i>	
Total Number of Violations	1,747
Total Number of Arrests	23

Educating Pedestrians & Drivers

- Street Smart educational handouts.



**People don't
come with airbags.**

Street Safety Tips

For Pedestrians, Bicyclists and Drivers

For Pedestrians:



Cross the street
at marked crosswalks and intersections.



Watch for turning vehicles.
Before crossing, look left, right,
then left again.



Use pedestrian pushbuttons.



Begin crossing
the street on the "walk" signal.



Stay visible after dark
and in bad weather.



Watch out for trucks & buses
backing out of parking spaces
and driveways.

For Bicyclists:



Obey all regulatory signs
and traffic lights.



Never ride against traffic.
Ride with traffic to avoid
potential accidents.



Use hand signals
to tell motorists what you intend to do.



Ride in a straight line
at least a car door's width away
from parked cars.



Always wear a helmet.
Helmets dramatically reduce the risk for
head injury in a bicycle accident.



Use lights at night
and when visibility is poor.

For Drivers:



Stop for pedestrians
at crosswalks and be careful when
passing stopped vehicles.



Slow down
and obey the posted speed limit.



Yield to pedestrians & bicyclists
when turning.



Look
before opening your door.



Allow 3 feet
when passing bicyclists.

STREET
SMART
BeStreetSmart.net

A public safety program of Metro, the District of Columbia, Maryland and Virginia.

Enforcement Resources

- Crosswalk Law Card for Motorists

*** District of Columbia ***

Pedestrian Safety for Drivers

A. At crosswalks and intersections without traffic signals:

- The driver of a vehicle shall **STOP** and give right-of-way to pedestrians crossing the roadway within any marked crosswalk or unmarked crosswalk at an intersection.

DC Code §50-2201.28(a) (2008)

B. At intersections with signals:

- When proceeding on a circular green signal, drivers turning right or left shall **STOP** and give right-of-way to pedestrians lawfully within the crosswalk.

DC Code §50-2201.28(b) (2008)

**PENALTY: \$250 & 3 points
IF COLLISION: \$500 & 6 points**

C. Right Turn on Red After Stop:

- A vehicle facing a steady red signal may cautiously enter the intersection to turn right **after stopping**. The vehicle shall yield right-of-way to pedestrians within an adjacent crosswalk and to other traffic lawfully using the intersection.

18 DCMR §2103.7(c) (1995)

PENALTY: \$50 and two points

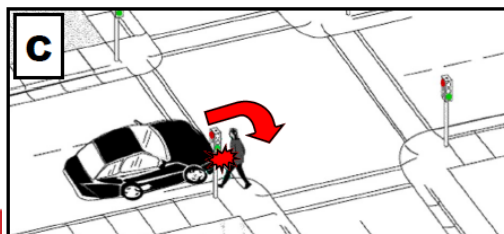
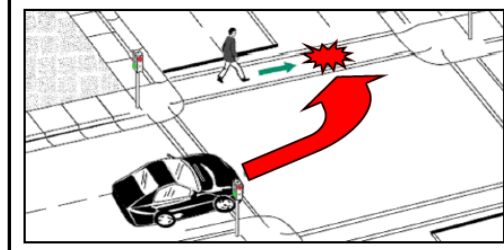
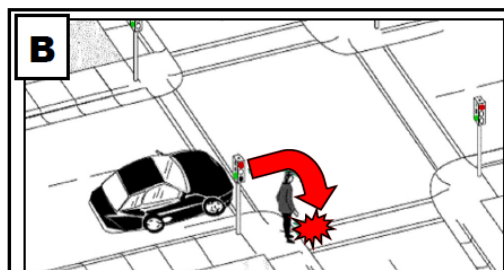
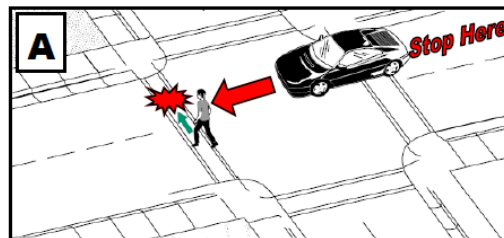


District Department of Transportation

Metropolitan Police Department
www.mpdc.dc.gov
District of Columbia
Department of Transportation
Telephone: (202) 671-2730
www.ddot.dc.gov

*** District of Columbia ***

Pedestrian Safety for Drivers





George Branyan
Pedestrian Program Coordinator
DC Department of Transportation

george.branyan@dc.gov

202-671-2561

Sgt. Terry Thorne
Special Operations Division
Metropolitan Police Department

terry.thorne@dc.gov

d.

Thank you !