



July 23, 2011

# OUR CHANGING REGION

*Highlights from the 2010 Decennial Census*



## In this report:

Population	1
Population Change	2-3
Race	4-10
Hispanic or Latino Origin	11-12

Mandated by Article I, Section 2 of the Constitution, the Decennial Census is a multi-billion dollar effort by the U.S. Census Bureau to provide an accurate count of the country's population every ten years. Data collected through the Decennial Census also provide the basis for determining the number of seats each state has in the U.S. House of Representatives and distributing billions of dollars in federal funds to local communities.

The Decennial Census previously collected detailed social, economic, housing, and demographic data on individuals and households through the Census long form. However, beginning with the 2010 Census, the Decennial Census only collects six basic demographic and housing characteristics: population, age, race, Hispanic or Latino origin, housing occupancy (occupied or vacant), and housing tenure (owned or rented). Detailed characteristics are now collected through the American Community Survey.

This issue of "Our Changing Region" explores 2010 Census data and was compiled from the Public Law 94-171 (PL94-171) congressional redistricting data – the first information released from the 2010 Census. This issue focuses on population, race, and ethnicity. Subsequent issues will focus on more detailed population and housing characteristics as the data become available.



*The Metropolitan Washington Council of Governments (COG) develops solutions to issues of regional importance. COG is an independent, nonprofit association*

*comprised of elected officials from 21 local governments, members of the Maryland and Virginia legislatures, and members of the U.S. Congress. For more information, please visit: [www.mwcog.org](http://www.mwcog.org)*

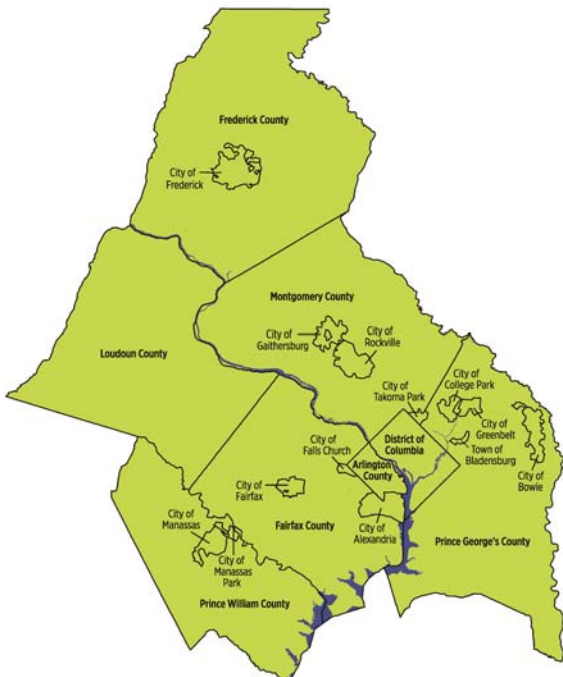
COG Member Jurisdictions	2010 Population	COG Member Jurisdictions	2010 Population
District of Columbia	601,723	Arlington County	207,627
Frederick County	233,385	Fairfax County	1,081,726
City of Frederick <sup>1</sup>	65,239	Loudoun County	312,311
Montgomery County	971,777	Prince William County	402,002
City of Gaithersburg <sup>1</sup>	59,933	City of Alexandria	139,966
City of Rockville <sup>1</sup>	61,209	City of Fairfax	22,565
City of Takoma Park <sup>1</sup>	16,715	City of Falls Church	12,332
Prince George's County	863,420	City of Manassas	37,821
City of Bowie <sup>1</sup>	54,727	City of Manassas Park	14,273
City of College Park <sup>1</sup>	30,413	<b>Northern Virginia</b>	<b>2,230,623</b>
City of Greenbelt <sup>1</sup>	23,068		
Town of Bladensburg <sup>1</sup>	9,148		
<b>Maryland Suburbs</b>	<b>2,068,582</b>	<b>Total, COG Region</b>	<b>4,900,928</b>

Source: Census 2010 PL 94-171 Redistricting Data

(1) Population of Maryland cities is included in appropriate county totals

On April 1, 2010 – Census Day – the population of the COG region totaled 4,900,928 people.

With a total population of 1,081,726, Fairfax County is the most populous jurisdiction, followed by Montgomery County (971,777), and Prince George's County (863,420).



## Region's population grew by 15 percent over the last decade

Between 2000 and 2010, the population of the COG region gained more than 642,876 people, an increase of about 15 percent.

Northern Virginia accounted for about two-thirds of the region's population growth. The Maryland suburbs and the District of Columbia accounted for about 31 percent and 5 percent of regional growth, respectively. Population growth varied widely by jurisdiction, with the fastest rates of change in the region's suburbs. Loudoun County had the largest proportional growth, with an increase of 84 percent between 2000 and 2010. Loudoun County's population growth represented about 22 percent of total regional growth.

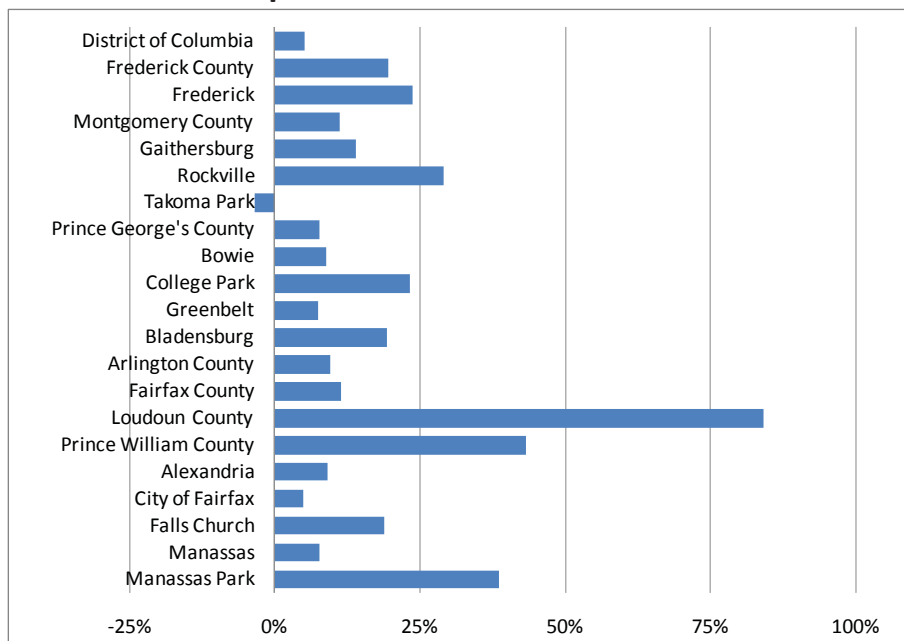
Takoma Park was the only jurisdiction that did not grow over the 10-year period, with a population decline of 3 percent.

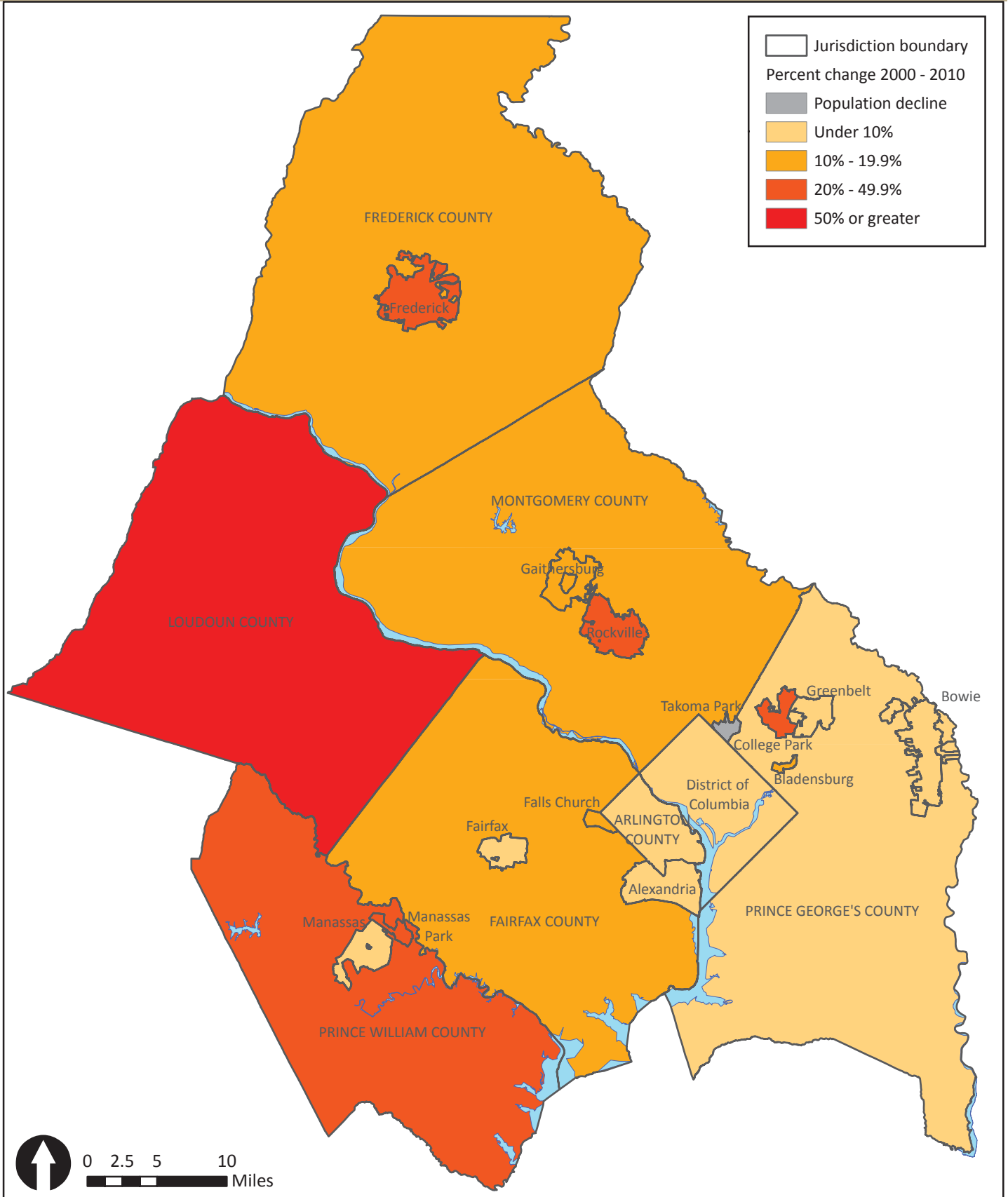
COG Member Jurisdictions	2010 Population	Population Change 2000 - 2010		Share of Regional Growth
District of Columbia	601,723	29,001	5.1%	4.5%
Frederick County	233,385	38,108	19.5%	5.9%
City of Frederick <sup>1</sup>	65,239	12,472	23.6%	1.9%
Montgomery County	971,777	98,436	11.3%	15.3%
City of Gaithersburg <sup>1</sup>	59,933	7,320	13.9%	1.1%
City of Rockville <sup>1</sup>	61,209	13,821	29.2%	2.1%
City of Takoma Park <sup>1</sup>	16,715	-584	-3.4%	-0.1%
Prince George's County	863,420	61,905	7.7%	9.6%
City of Bowie <sup>1</sup>	54,727	4,458	8.9%	0.7%
City of College Park <sup>1</sup>	30,413	5,756	23.3%	0.9%
City of Greenbelt <sup>1</sup>	23,068	1,612	7.5%	0.3%
Town of Bladensburg <sup>1</sup>	9,148	1,487	19.4%	0.2%
<b>Maryland Suburbs</b>	<b>2,068,582</b>	<b>198,449</b>	<b>10.6%</b>	<b>30.9%</b>
Arlington County	207,627	18,174	9.6%	2.8%
Fairfax County	1,081,726	111,977	11.5%	17.4%
Loudoun County	312,311	142,712	84.1%	22.2%
Prince William County	402,002	121,189	43.2%	18.9%
City of Alexandria	139,966	11,683	9.1%	1.8%
City of Fairfax	22,565	1,067	5.0%	0.2%
City of Falls Church	12,332	1,955	18.8%	0.3%
City of Manassas	37,821	2,686	7.6%	0.4%
City of Manassas Park	14,273	3,983	38.7%	0.6%
<b>Northern Virginia</b>	<b>2,230,623</b>	<b>415,426</b>	<b>22.9%</b>	<b>64.6%</b>
<b>COG Region</b>	<b>4,900,928</b>	<b>642,876</b>	<b>15.1%</b>	<b>100.0%</b>

Source: Census 2010 PL 94-171 Redistricting Data

(1) Population of Maryland cities is included in appropriate county totals

### Population Growth 2000 - 2010

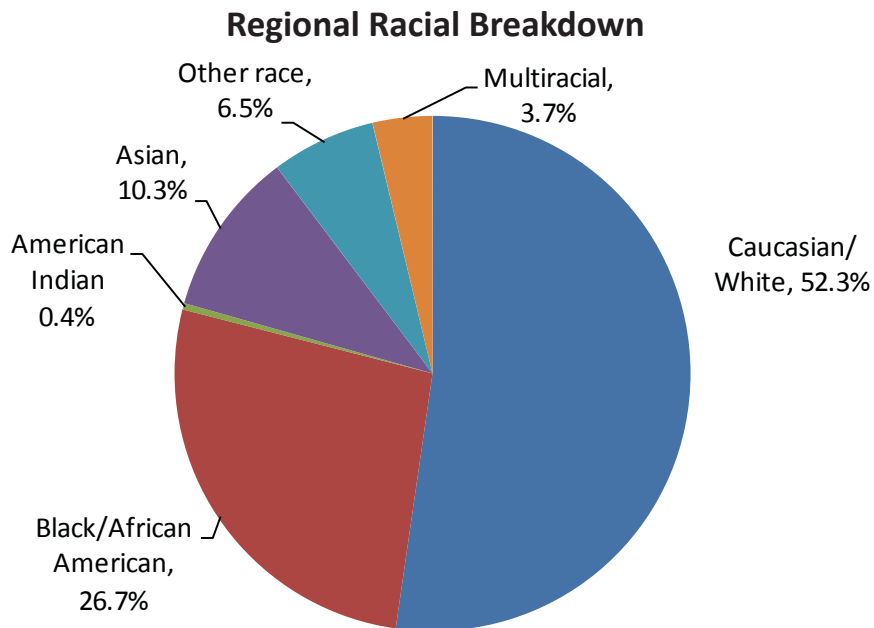




Source: 2010 Census SF1 100% Data, Table P1: Total Population; 2000 Census SF1 100% Data, Table P1: Total Population

# Population Change, 2000 - 2010

Approximately half of the region’s population is Caucasian or White. Black or African American is the next largest racial group at about 27 percent, followed by Asian at about 10 percent. American Indian is the smallest group at less than 1 percent of the population. Approximately 7 percent of the population identifies as “some other race,” and approximately 4 percent is of two or more races.



### Percent of Each Racial Group by Jurisdiction

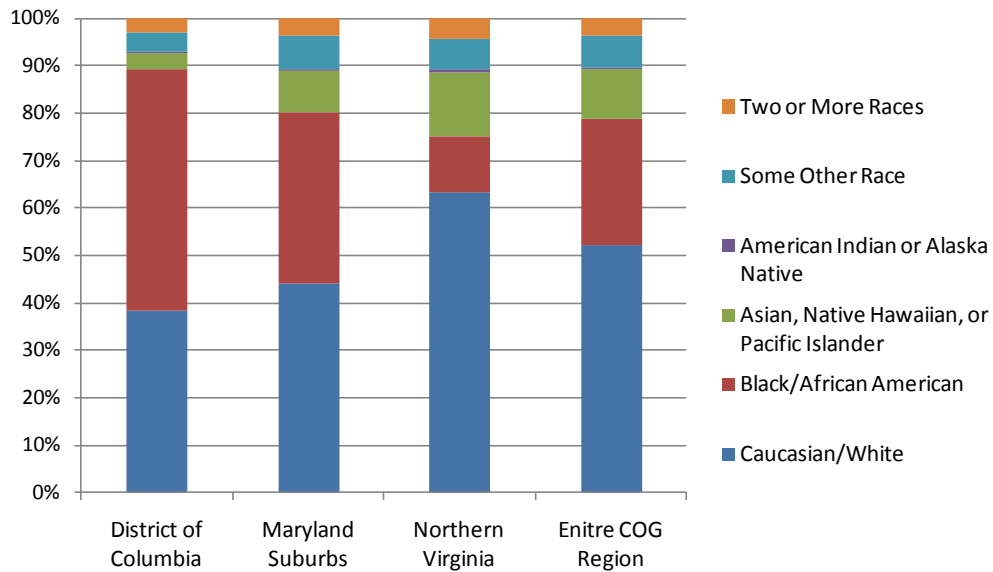
COG Member Jurisdictions	Caucasian/ White	Black/ African American	Asian, Native Hawaiian, or other Pacific Islander	American Indian or Alaska Native	Some Other Race	Two or More Races
<b>District of Columbia</b>	<b>38.5%</b>	<b>50.7%</b>	<b>3.5%</b>	<b>0.3%</b>	<b>4.1%</b>	<b>2.9%</b>
Frederick County	81.5%	8.6%	3.9%	0.3%	2.9%	2.8%
City of Frederick <sup>1</sup>	63.9%	18.6%	5.9%	0.5%	7.1%	4.0%
Montgomery County	57.5%	17.2%	14.0%	0.4%	7.0%	4.0%
City of Gaithersburg <sup>1</sup>	50.8%	16.3%	17.0%	0.5%	10.7%	4.8%
City of Rockville <sup>1</sup>	60.4%	9.6%	20.6%	0.3%	5.3%	3.8%
City of Takoma Park <sup>1</sup>	49.0%	35.0%	4.4%	0.3%	6.5%	4.8%
Prince George's County	19.2%	64.5%	4.1%	0.5%	8.5%	3.2%
City of Bowie <sup>1</sup>	41.4%	48.7%	4.2%	0.3%	1.9%	3.6%
City of College Park <sup>1</sup>	63.0%	14.3%	12.8%	0.3%	6.0%	3.5%
City of Greenbelt <sup>1</sup>	30.1%	47.8%	9.8%	0.3%	8.6%	3.3%
Town of Bladensburg <sup>1</sup>	12.6%	65.6%	2.1%	0.5%	16.6%	2.7%
<b>Maryland Suburbs</b>	<b>44.2%</b>	<b>36.0%</b>	<b>8.7%</b>	<b>0.4%</b>	<b>7.2%</b>	<b>3.5%</b>
Arlington County	71.7%	8.5%	9.7%	0.5%	5.9%	3.7%
Fairfax County	62.7%	9.2%	17.6%	0.4%	6.1%	4.1%
Loudoun County	68.7%	7.3%	14.8%	0.3%	4.9%	4.0%
Prince William County	57.8%	20.2%	7.7%	0.6%	8.6%	5.1%
City of Alexandria	60.9%	21.8%	6.1%	0.4%	7.1%	3.7%
City of Fairfax	69.6%	4.7%	15.3%	0.5%	5.9%	4.0%
City of Falls Church	79.9%	4.3%	9.5%	0.3%	2.1%	4.0%
City of Manassas	61.7%	13.7%	5.1%	0.6%	14.6%	4.3%
City of Manassas Park	55.9%	13.0%	9.1%	0.4%	16.1%	5.4%
<b>Northern Virginia</b>	<b>63.5%</b>	<b>11.7%</b>	<b>13.6%</b>	<b>0.4%</b>	<b>6.6%</b>	<b>4.2%</b>
<b>COG Region</b>	<b>52.3%</b>	<b>26.7%</b>	<b>10.3%</b>	<b>0.4%</b>	<b>6.5%</b>	<b>3.7%</b>

Source: Census 2010 PL 94-171 Redistricting Data

(1) Population of Maryland cities is included in appropriate county totals

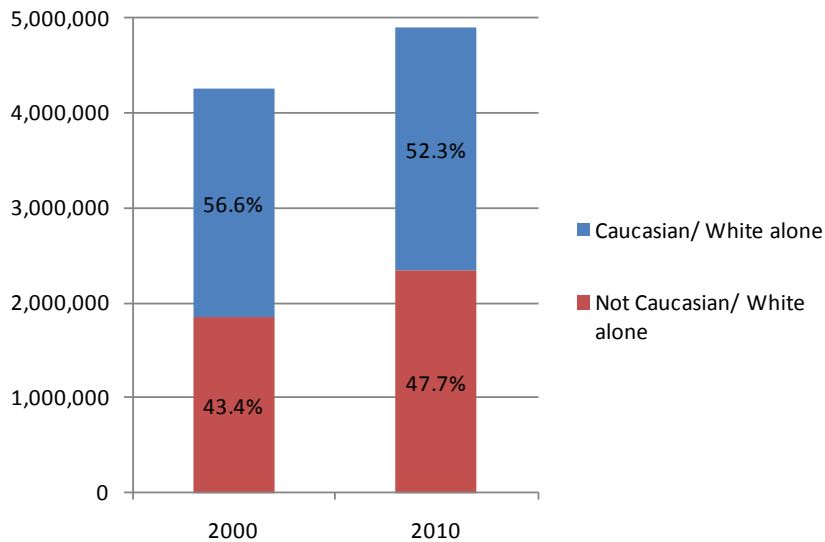
## Region’s shifting demographics redefine concept of “minorities”

Racial Breakdown by Subregion



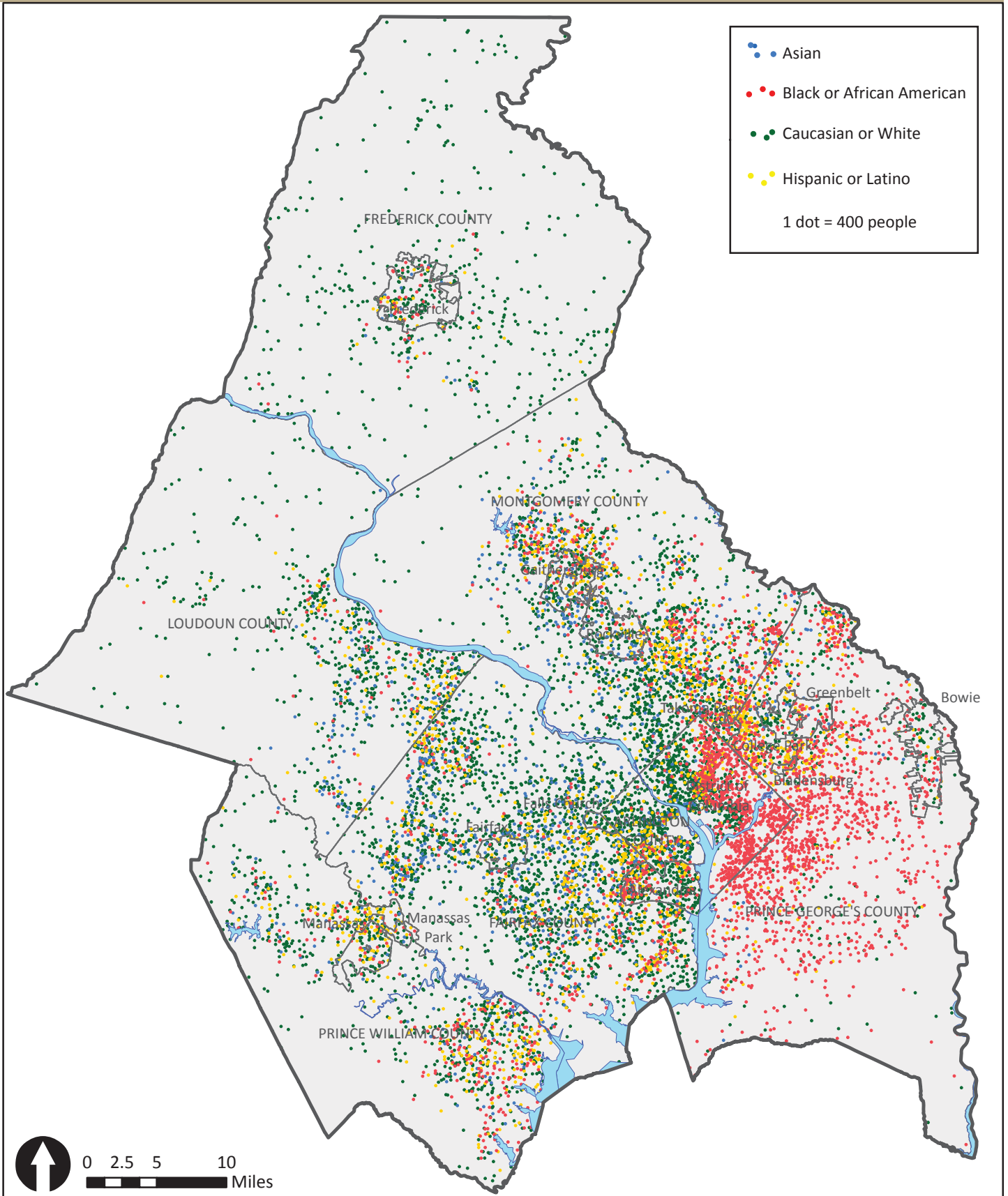
The subregions of District of Columbia, Maryland suburbs, and Northern Virginia vary widely in their respective proportions of each racial group, but overall, the region became more diverse between 2000 and 2010. While a majority of the region’s population is Caucasian or White, the proportion of the population that is not Caucasian or White increased from 43.4 to 47.7 percent over the ten-year period.

Percent of Population that is Not Caucasian, 2000 - 2010



The map on page 6 shows the distribution of the four largest racial and ethnic groups throughout the region. The maps on pages 7, 8, 9, and 12 show the proportion of each of these groups by census tract.

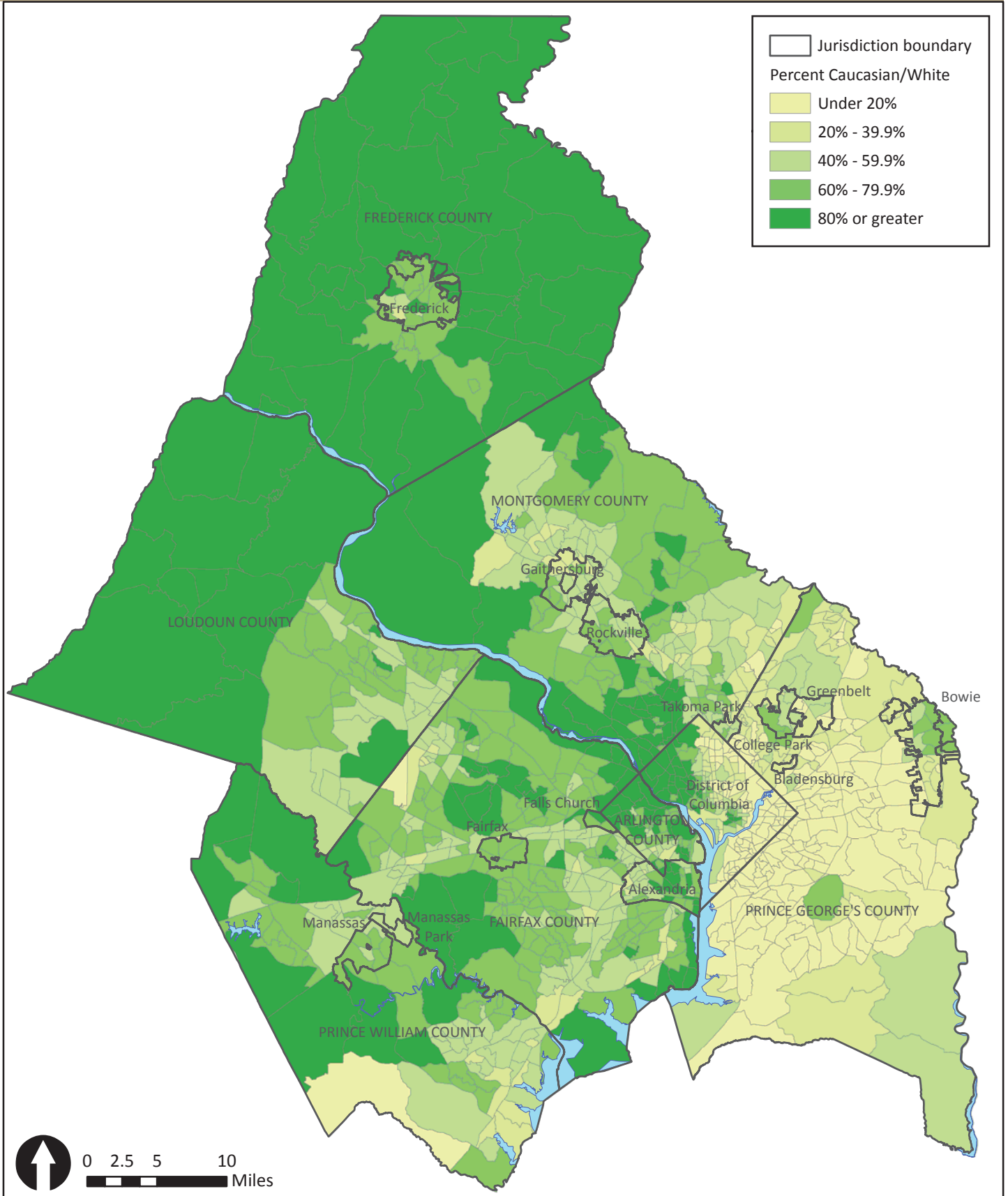
The maps highlight the degree to which the region’s Black or African American population is concentrated on the eastern side of the region. Prince George’s County has the largest local share of the Washington Metropolitan region’s Black or African American population at approximately 43 percent, followed by the District of Columbia at 23.3 percent. The jurisdictions with the highest proportion of Black or African American population relative to total population are Bladensburg (65.6 percent) and Prince George’s County (64.5 percent).



Source: 2010 Census (PL 94-171), Table P1: Race, Table P2: Hispanic or Latino, and Not Hispanic or Latino by Race

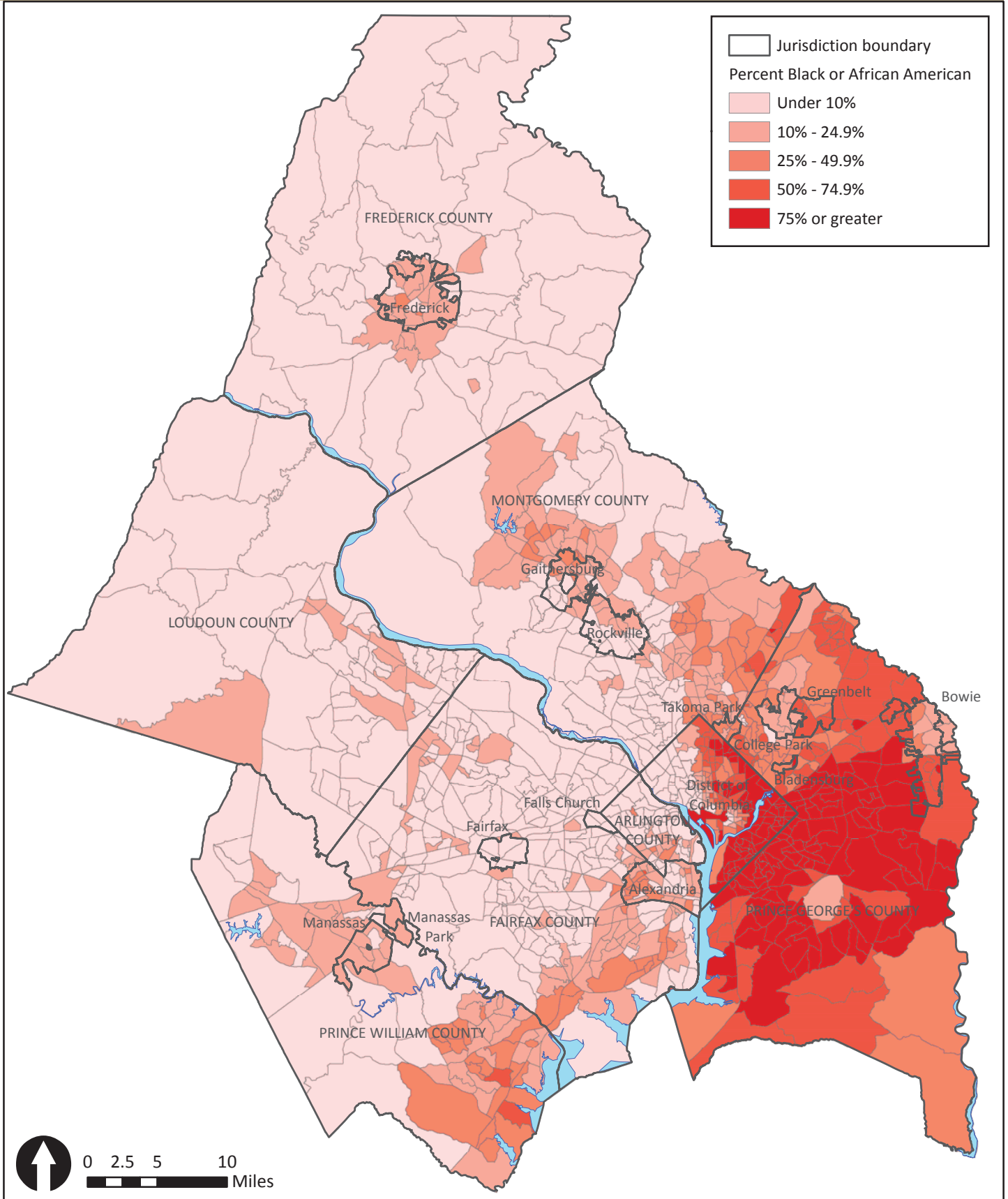
# Distribution of Racial and Ethnic Groups by Census Tract, 2010





Source: 2010 Census (PL 94-171), Table P1: Race

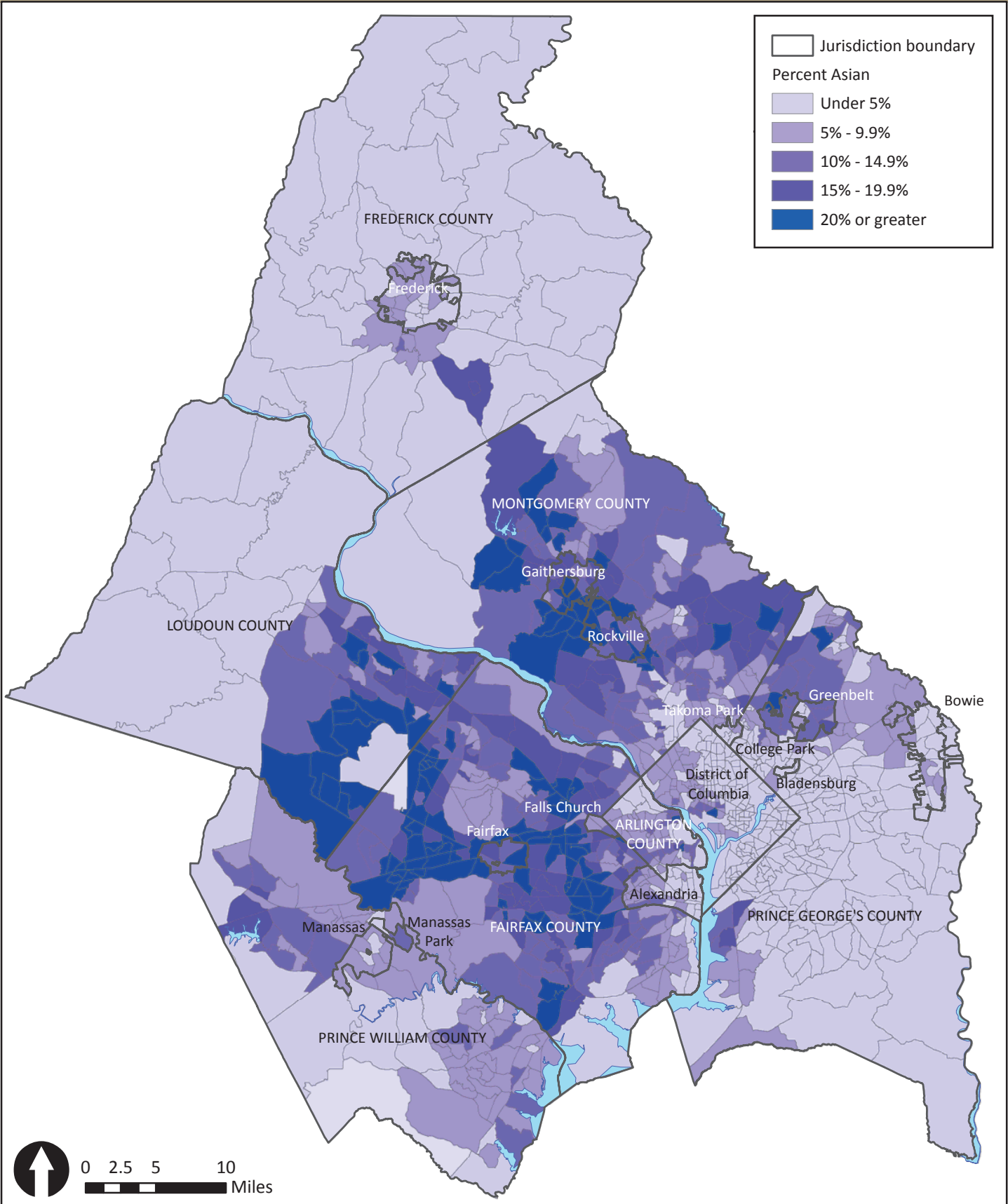
# Percent Caucasian or White by Census Tract, 2010



Source: 2010 Census (PL 94-171), Table P1: Race

# Percent Black or African American by Census Tract, 2010





Source: 2010 Census (PL 94-171), Table P1: Race  
Includes Native Hawaiian and Other Pacific Islander

# Percent Asian by Census Tract, 2010

## Significant increase in number of residents identifying as more than one race over the past decade

COG Member Jurisdictions	2010 Total Population	Multiracial Population		Change, 2000 - 2010	
		2000	2010	Number	Percent
<b>District of Columbia</b>	<b>601,723</b>	<b>13,446</b>	<b>17,316</b>	<b>3,870</b>	<b>28.8%</b>
Frederick County	233,385	2,876	6,464	3,588	124.8%
City of Frederick <sup>1</sup>	65,239	1,298	2,604	1,306	100.6%
Montgomery County	971,777	30,117	38,645	8,528	28.3%
City of Gaithersburg <sup>1</sup>	59,933	2,311	2,857	546	23.6%
City of Rockville <sup>1</sup>	61,209	1,481	2,350	869	58.7%
City of Takoma Park <sup>1</sup>	16,715	860	804	-56	-6.5%
Prince George's County	863,420	20,884	27,329	6,445	30.9%
City of Bowie <sup>1</sup>	54,727	1,158	1,946	788	68.0%
City of College Park <sup>1</sup>	30,413	569	1,079	510	89.6%
City of Greenbelt <sup>1</sup>	23,068	745	750	5	0.7%
Town of Bladensburg <sup>1</sup>	9,148	221	246	25	11.3%
<b>Maryland Suburbs</b>	<b>2,068,582</b>	<b>53,877</b>	<b>72,438</b>	<b>18,561</b>	<b>34.5%</b>
Arlington County	207,627	8,229	7,777	-452	-5.5%
Fairfax County	1,081,726	35,438	43,915	8,477	23.9%
Loudoun County	312,311	4,130	12,575	8,445	204.5%
Prince William County	402,002	10,178	20,500	10,322	101.4%
City of Alexandria	139,966	5,483	5,225	-258	-4.7%
City of Fairfax	22,565	701	908	207	29.5%
City of Falls Church	12,332	252	489	237	94.0%
City of Manassas	37,821	1,146	1,629	483	42.1%
City of Manassas Park	14,273	343	775	432	125.9%
<b>Northern Virginia</b>	<b>2,230,623</b>	<b>65,900</b>	<b>93,793</b>	<b>27,893</b>	<b>42.3%</b>
<b>COG Region</b>	<b>4,900,928</b>	<b>133,223</b>	<b>183,547</b>	<b>50,324</b>	<b>37.8%</b>

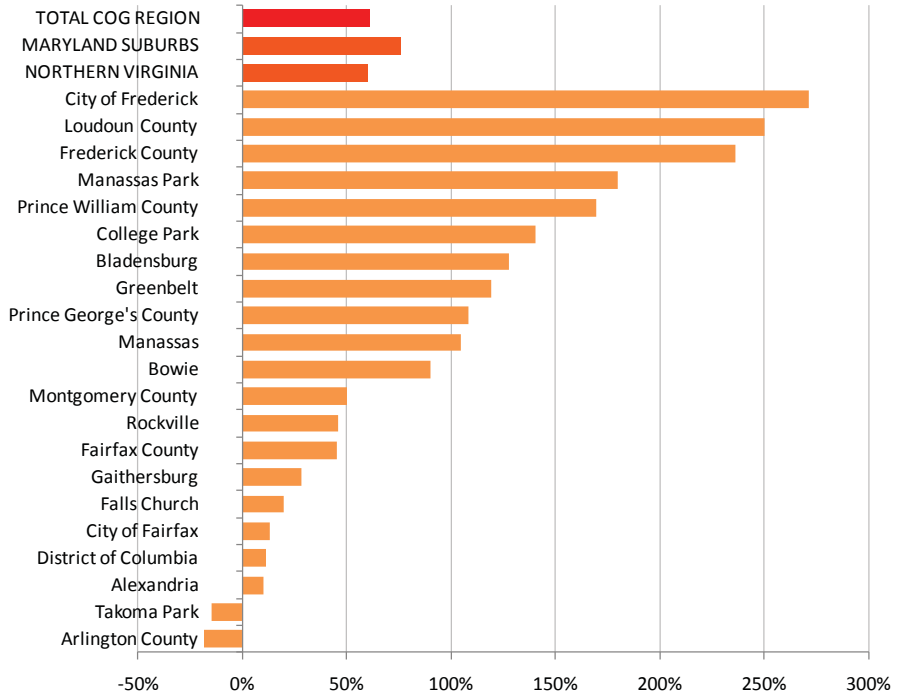
Source: Census 2010 PL 94-171 Redistricting Data

(1) Population of Maryland cities is included in appropriate county totals

Census 2010 was the second consecutive enumeration in which residents could indicate they were of more than one race. Respondents were able to identify as many as six racial identities in the 2010 enumeration. As of 2010, 183,547 people or 3.7 percent of the region's population was multiracial. Between 2000 and 2010, the multiracial population increased by 50,324, or 38 percent. Prince William County had the greatest absolute increase in multiracial population (10,322), while Loudoun County had the greatest percentage increase (approximately 205 percent).

# Hispanic or Latino population grew 60 percent between 2000 and 2010

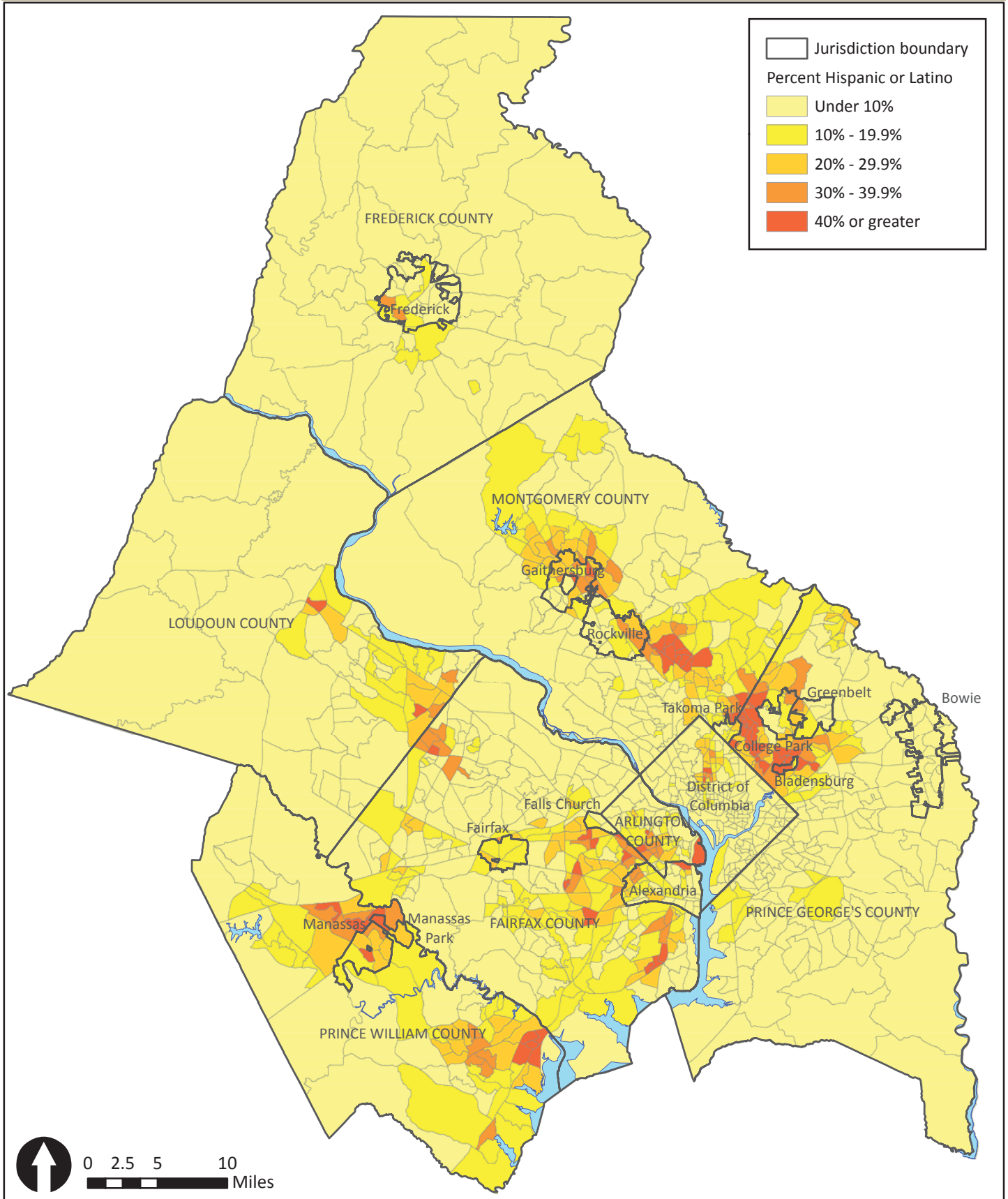
Between 2000 and 2010, the population identifying as Hispanic or Latino in the Washington Metropolitan Region increased substantially. The region had an overall increase of 60 percent over 2000 levels. The Hispanic or Latino population increased in all jurisdictions except for Takoma Park and Arlington County. Prince George’s County had the largest absolute change, with an increase of 66,969 persons of Hispanic or Latino origin. In ten jurisdictions, the 2010 Hispanic or Latino population was more than double 2000 numbers. City of Frederick, Loudoun County, and Frederick County had the highest proportional increases, each with gains of over 200 percent over 2000 levels.



COG Member Jurisdictions	2010 Total Population	Hispanic or Latino Population		Change, 2000 - 2010	
		2000	2010	Number	Percent
District of Columbia	601,723	49,121	54,749	5,628	11.5%
Frederick County	233,385	5,094	17,135	12,041	236.4%
City of Frederick <sup>1</sup>	65,239	2,533	9,402	6,869	271.2%
Montgomery County	971,777	110,198	165,398	55,200	50.1%
City of Gaithersburg <sup>1</sup>	59,933	11,335	14,499	3,164	27.9%
City of Rockville <sup>1</sup>	61,209	6,019	8,781	2,762	45.9%
City of Takoma Park <sup>1</sup>	16,715	2,836	2,417	-419	-14.8%
Prince George's County	863,420	62,003	128,972	66,969	108.0%
City of Bowie <sup>1</sup>	54,727	1,624	3,086	1,462	90.0%
City of College Park <sup>1</sup>	30,413	1,506	3,621	2,115	140.4%
City of Greenbelt <sup>1</sup>	23,068	1,505	3,301	1,796	119.3%
Town of Bladensburg <sup>1</sup>	9,148	1,082	2,463	1,381	127.6%
<b>Maryland Suburbs</b>	<b>2,068,582</b>	<b>177,295</b>	<b>311,505</b>	<b>134,210</b>	<b>75.7%</b>
Arlington County	207,627	38,475	31,382	-7,093	-18.4%
Fairfax County	1,081,726	116,080	168,482	52,402	45.1%
Loudoun County	312,311	11,030	38,576	27,546	249.7%
Prince William County	402,002	30,239	81,460	51,221	169.4%
City of Alexandria	139,966	20,449	22,524	2,075	10.1%
City of Fairfax	22,565	3,154	3,556	402	12.7%
City of Falls Church	12,332	925	1,109	184	19.9%
City of Manassas	37,821	5,801	11,876	6,075	104.7%
City of Manassas Park	14,273	1,661	4,645	2,984	179.7%
<b>Northern Virginia</b>	<b>2,230,623</b>	<b>227,814</b>	<b>363,610</b>	<b>135,796</b>	<b>59.6%</b>
<b>COG Region</b>	<b>4,900,928</b>	<b>454,230</b>	<b>729,864</b>	<b>275,634</b>	<b>60.7%</b>

Source: Census 2010 PL 94-171 Redistricting Data

(1) Population of Maryland cities is included in appropriate county totals



Source: 2010 Census (PL 94-171), Table P2: Hispanic or Latino, and Not Hispanic or Latino by Race

# Percent Hispanic or Latino by Census Tract, 2010