

EQUITY EMPHASIS AREAS NATIONAL CAPITAL REGION

Geographic Specificity To Aid Actions

Kanti Srikanth
COG Deputy Executive Director for Metropolitan Planning
TPB Staff Director

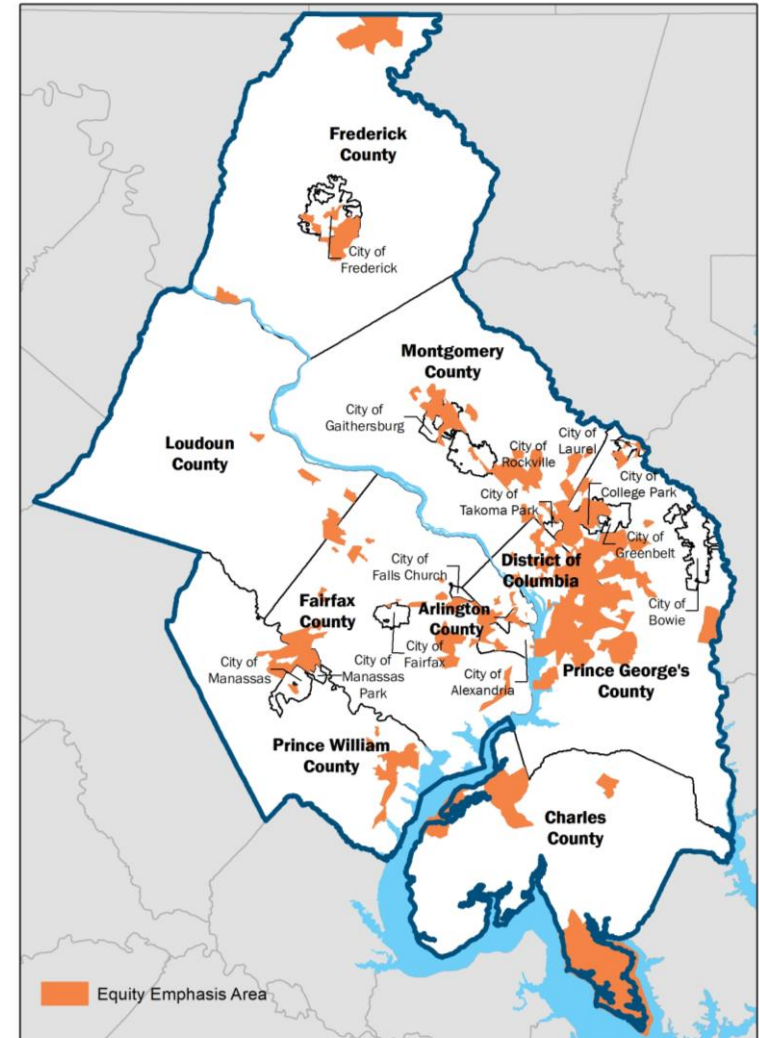
COG Board of Directors
June 9, 2021



Equity Emphasis Areas (EEAs)

Geographic areas in our region:

- With high concentration of traditionally underserved population groups.
- That have experienced inequities.
- Where equity considerations deserve to be empathized.



Why Low Income and Minority

Title VI: Civil Rights Act of 1964

Prohibit discrimination based on **race, color, or national origin** under any program or activity receiving Federal financial assistance

Environmental Justice (EO 12898)

Recipients of federal funds must identify and avoid disproportionately high and adverse effects on **minority and low-income populations**



Definitions: Low Income/Minority

Low Income:

A person is considered low-income if their household income is less than 1 1/2 times the federal government's threshold for poverty.

Minority Groups:

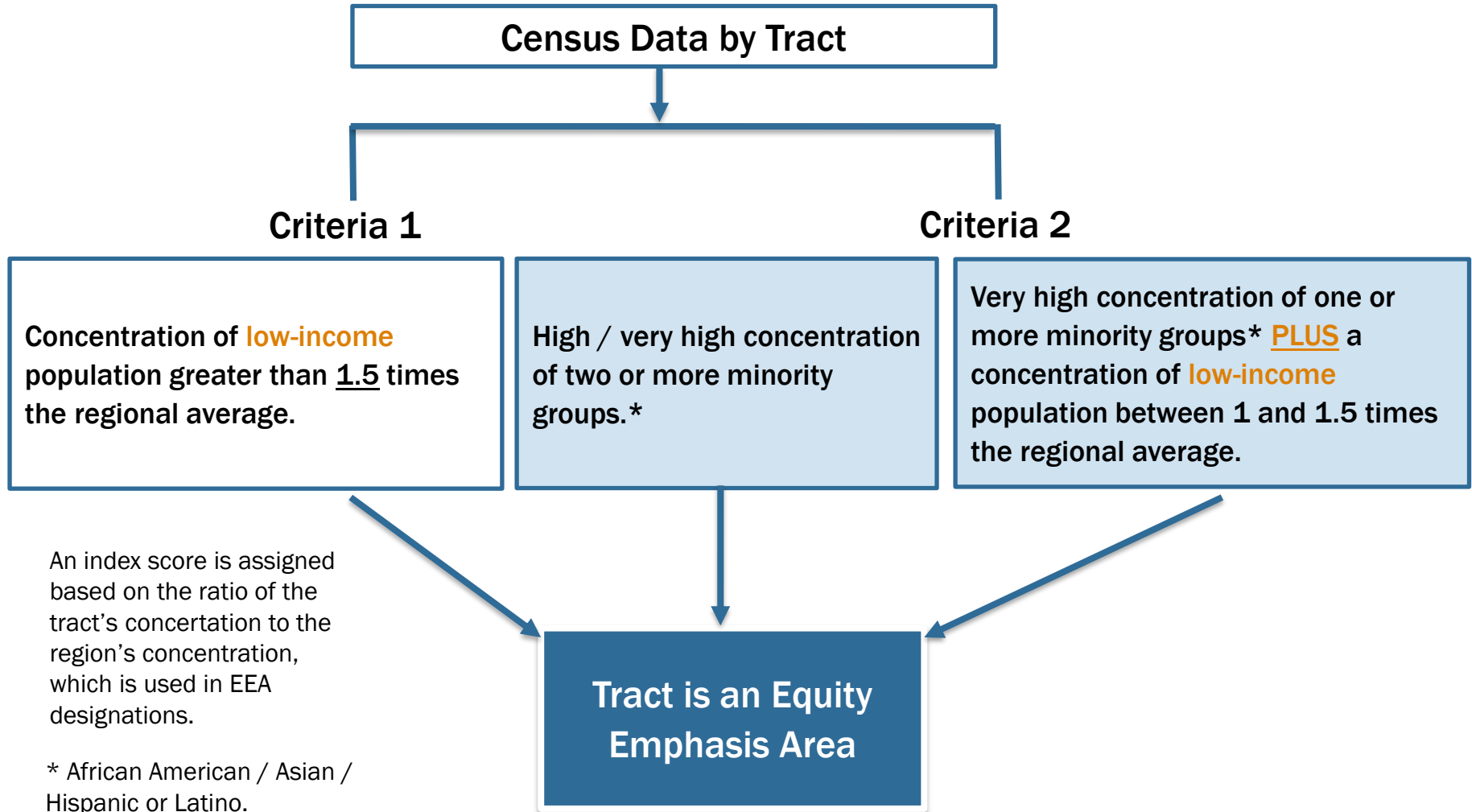
African American - A person having origins in any of the Black racial groups of Africa.

Hispanic or Latino - A person of Mexican, Puerto Rican, Cuban, South or Central American, or other Spanish culture or origin regardless of race.

Asian - A person having origins in any of the original peoples of the Far East, Southeast Asia, or the Indian subcontinent.



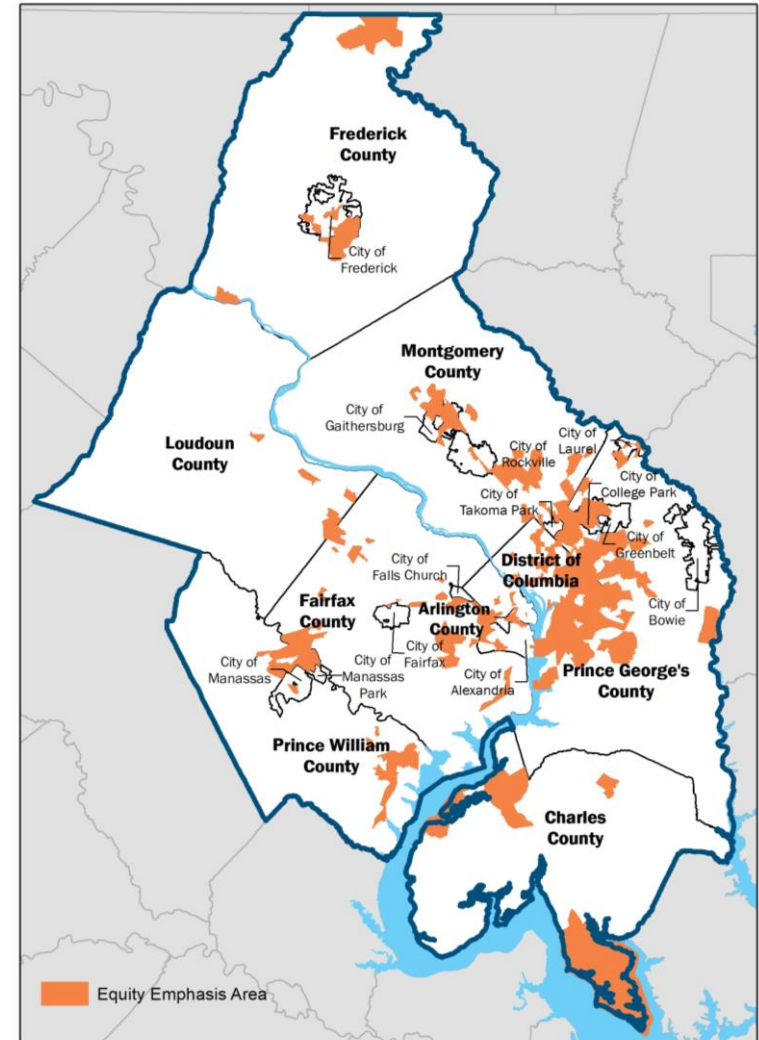
Designating Census Tracts as EEAs



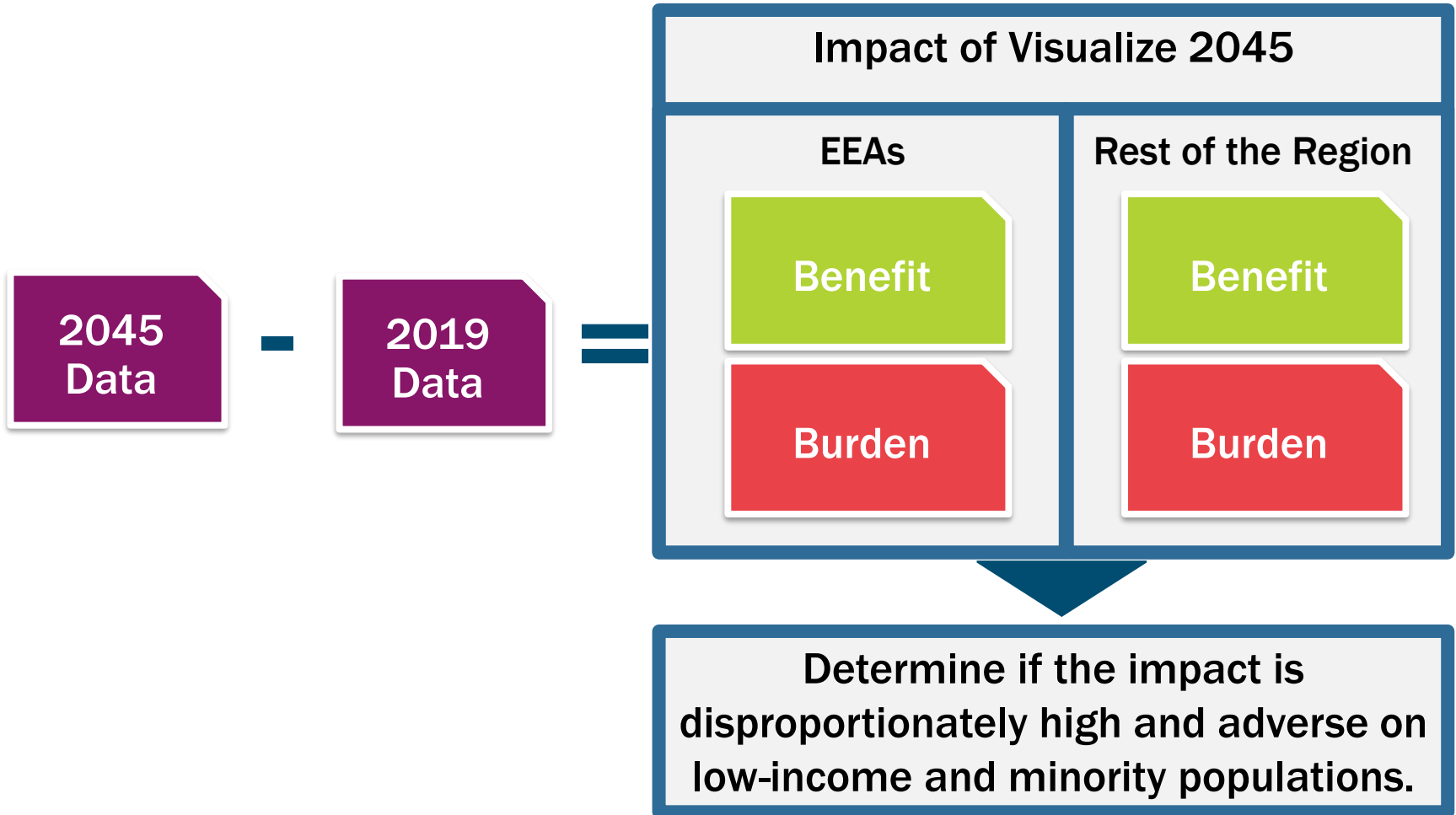
EEA tool at your fingertips!

Detailed information, reports, and the GIS tool:

mwcog.org/EquityEmphasisAreas



Application of EEAs: Transportation Plan



Transportation Plan: Summary Findings

Determination:

- Planned projects of Visualize 2045 would not have a disproportionate and adverse impact on low-income and minority populations.
- ✓ **Seven measures:** Similar **Benefits** for EEAs and the Rest of the Region
- ✓ **One measure:** Disproportionate **Benefits** for EEAs
- **Two measures:** Similar **Burdens** for EEAs and the Rest of the Region

Improvement Opportunities:

- Close the gap in difference in magnitude of benefit / dis-benefit between EEAs & Non-EEAs



Transportation Plan: Summary Findings

Limitations:

- Impacts of all EEAs combined, not individual EEAs
- Combined impact of all projects and policies–not individual project / policy
- Current location of EEAs remain unchanged in 2045
- Other factors not considered include:
 - Safety and comfort
 - Reliability
 - Availability of information and ease of use
 - Language barriers



Application of EEAs: Roadway Safety

How do EEAs compare to the rest of the region when it comes to roadway fatalities and serious injuries?

Jurisdiction	Average Population in EEAs	Percentage of Population in EEAs	Percentage of Fatalities in EEAs	Percentage of Serious Injuries in EEAs
Urban Core	447,026	42.3%	58.9%	46.8%
District of Columbia	355,176	55.0%	65.9%	54.4%
Arlington County	46,778	20.7%	14.3%	16.4%
City of Alexandria	45,072	29.8%	57.9%	25.6%
Inner Suburbs	880,947	28.4%	36.1%	27.3%
Montgomery County	254,559	24.8%	44.0%	28.9%
Prince George's County	412,062	45.9%	41.0%	39.2%
Fairfax County	214,326	18.9%	16.2%	18.0%
Outer Suburbs	199,793	15.5%	19.8%	19.6%
Charles County	18,058	11.7%	13.9%	21.7%
Frederick County	39,929	16.4%	21.4%	24.2%
Loudoun County	25,837	7.1%	11.9%	8.7%
Prince William County	101,648	22.9%	30.0%	29.7%
Manassas	7,556	18.4%	16.7%	11.0%
Manassas Park	6,765	42.7%	0.0%	42.9%
National Capital Region	1,527,766	28.0%	34.4%	28.7%



EEA Roadway Safety: Summary Findings

- Contain 29 percent of the region's population yet they account for 34 percent of the region's fatalities.
- Contain 42 percent of the Urban Core's population yet they account for 59 percent of the Urban Core's fatalities.
- Contain 16 percent of the Outer Suburb's population yet they account for 20 percent of the Outer Suburb's serious injuries.
- Have higher percentages of fatalities involving young drivers, pedestrians, crashes at intersections, and crashes on major arterials.



Equity: A Fundamental COG Value

In July 2020, the COG Board of Directors approved a resolution declaring equity a fundamental value.

The Board affirms that our work together as the Metropolitan Washington Council of Governments will be anti-racist and will advance equity; and

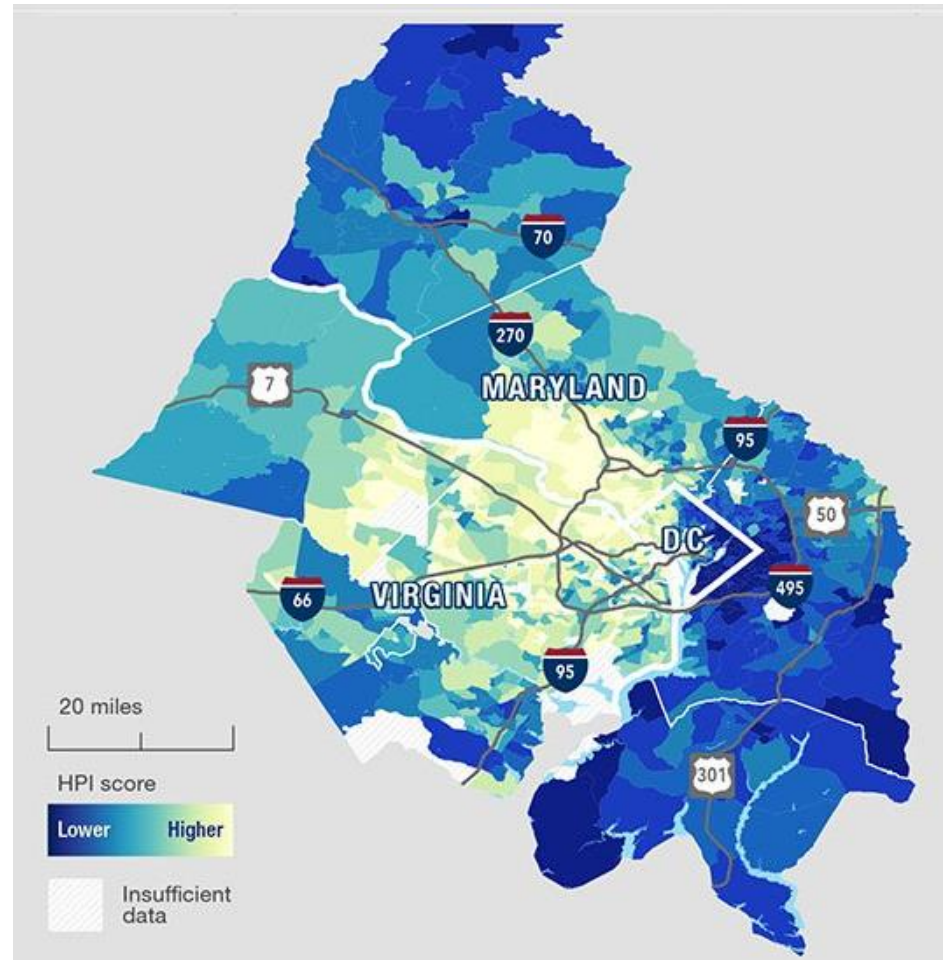
The Board affirms that Equity will be woven into COG's Region Forward Vision to ensure a more prosperous, accessible, livable, sustainable, and equitable future for all area residents and throughout COG's analyses, operations, procurement, programs, and priorities.



Other Applications

- How can we use findings of such geographically focused equity analysis to inform decision making?
- Sample topics like social determinants of health, fair housing, and tree canopy.

Learn more about COG's equity work: mwcog.org/equity



Kanti Srikanth

COG Deputy Executive Director for Metropolitan Planning

TPB Staff Director

(202) 962-3257

Ksrikanth@mwcog.org

mwcog.org/TPB

Metropolitan Washington Council of Governments

777 North Capitol Street NE, Suite 300

Washington, DC 20002



National Capital Region
Transportation Planning Board