

# Performance Based Planning & Programming

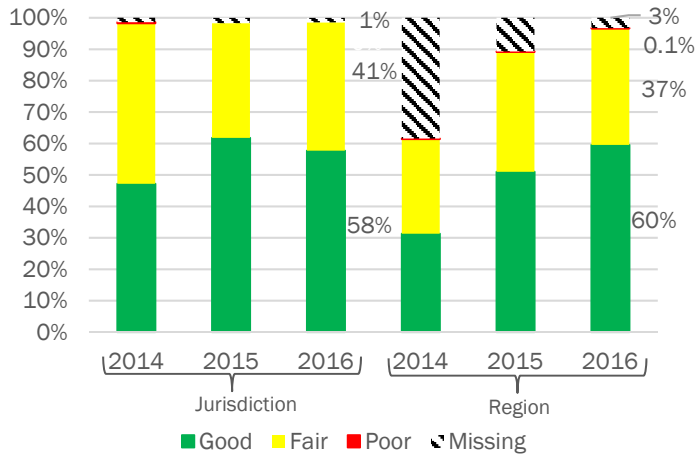
## Virginia

The Federal Highway Administration has established measures for state departments of transportation to use to assess the condition of pavements on the National Highway System (NHS), bridges carrying the NHS which includes on-and off-ramps connected to the NHS, and pavements on the Interstate System.

### Pavement Conditions

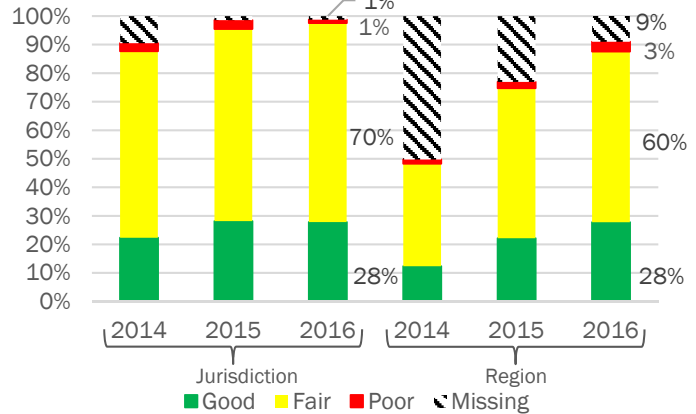
(Sections with Bridges, ramps, non-mainline, non-inventory direction, planned/unbuilt, unpaved and 'other' pavement types excluded)

#### Interstate Pavement Conditions



767.2 Interstate Lane Miles

#### Non-Interstate NHS Pavement Conditions

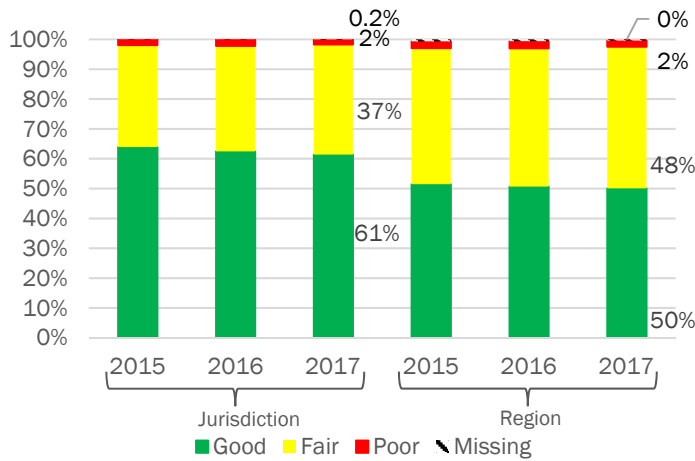


1897.4 Non-Interstate NHS Lane Miles

### NHS Bridges

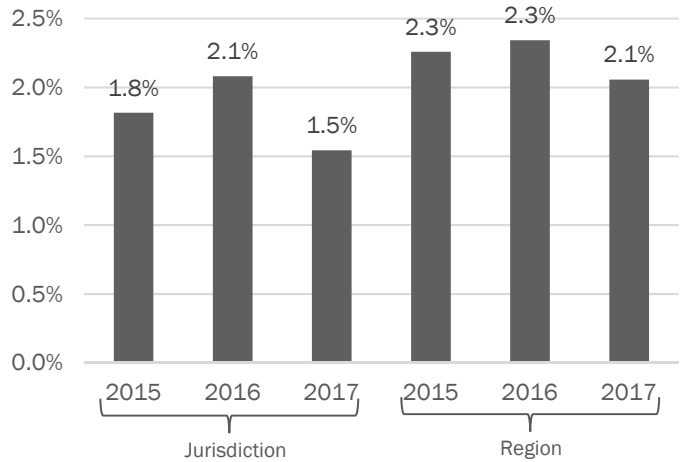
(Includes: 577 Bridges and 113 Culverts; 13 Structurally Deficient)

#### NHS Bridge Conditions



Largest Structurally Deficient Bridges (by deck area): King Street at Route I-395 - Ramps C&G, Duke Street at Route I-395, GWMP at Windy Run

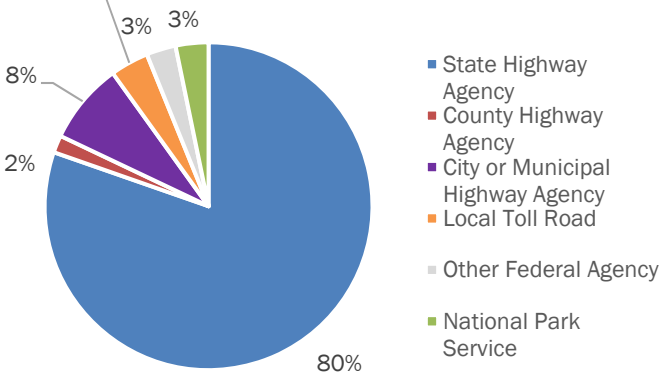
#### Structurally Deficient NHS Bridges



### Ownership

(All Interstate lane miles owned by the corresponding State Highway Agency)

#### Non-Interstate NHS Ownership



#### NHS Bridge Ownership

